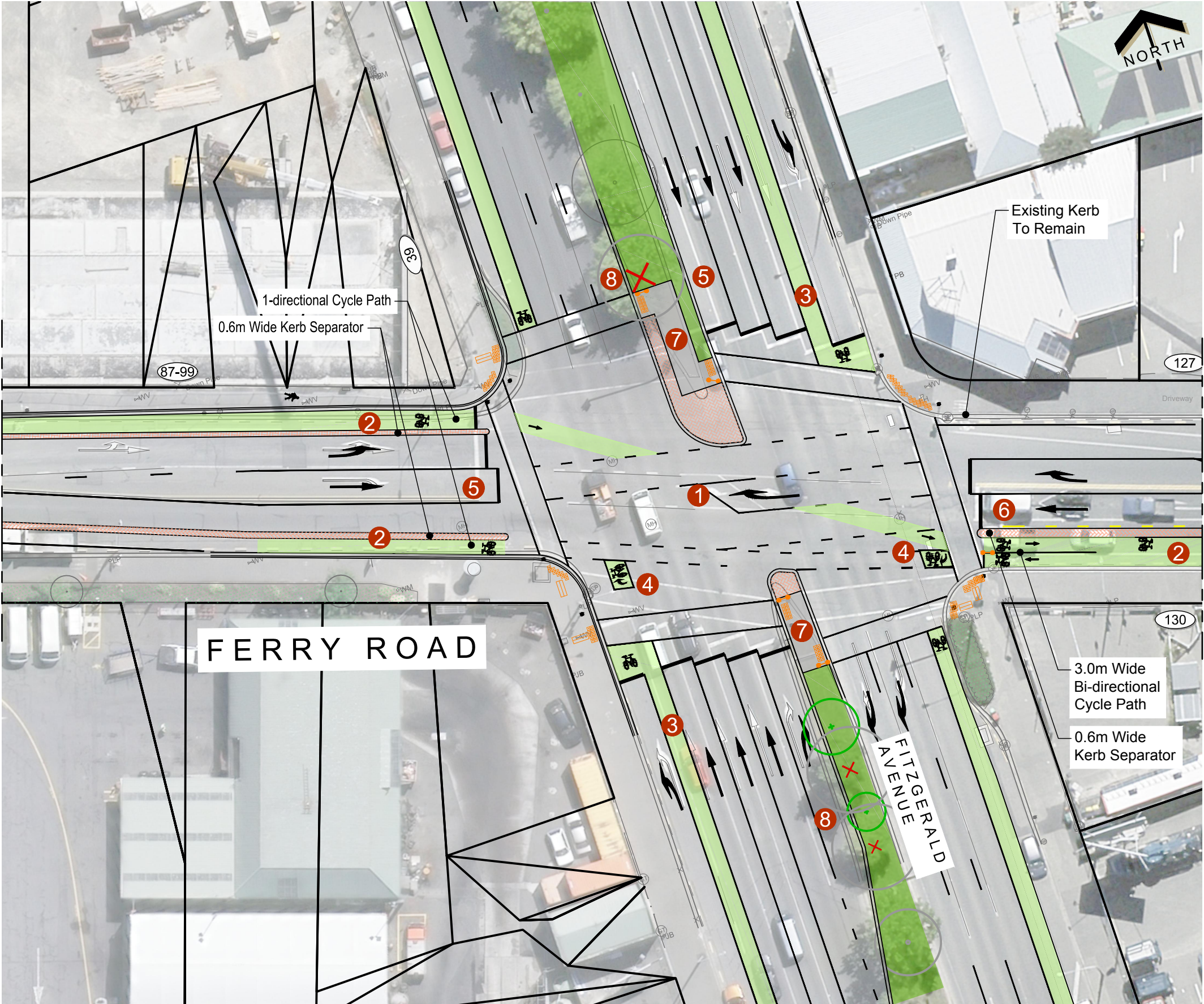


Original size mm  
100  
50  
30  
10  
0

TIE INTO ACCESSIBLE  
CITIES DESIGN



Join Line  
Refer Sheet 2



**LOCALITY PLAN**  
N.T.S

KEY	
	Existing Kerb
	Proposed Kerb
	No Stopping Line
	Cycleway Surfacing
	Shared Path
	Separator
	Landscape Separator
	Ramp
	Tactile Ground Surface Indicator
	Street Lighting Remove
	Threshold Element (e.g. Seats, Cycle Racks, Way Finding, Drinking Fountain)
	Grass
	Landscape Planting
	Patterned Surface
	Existing Tree
	Existing Tree To Be Removed
	Proposed Trees (Species to be confirmed)



© Copyright Christchurch City Council © Aerial Photography Copyright Terralink International Ltd

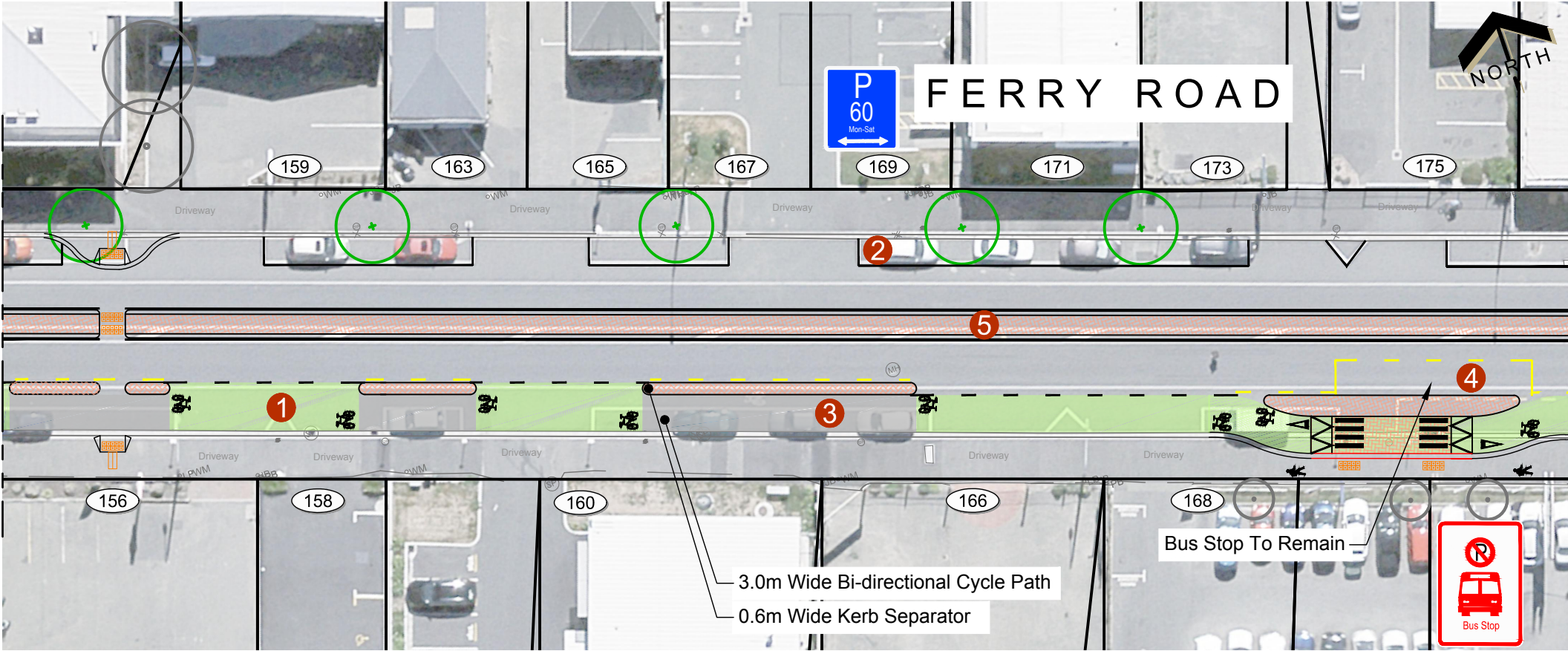
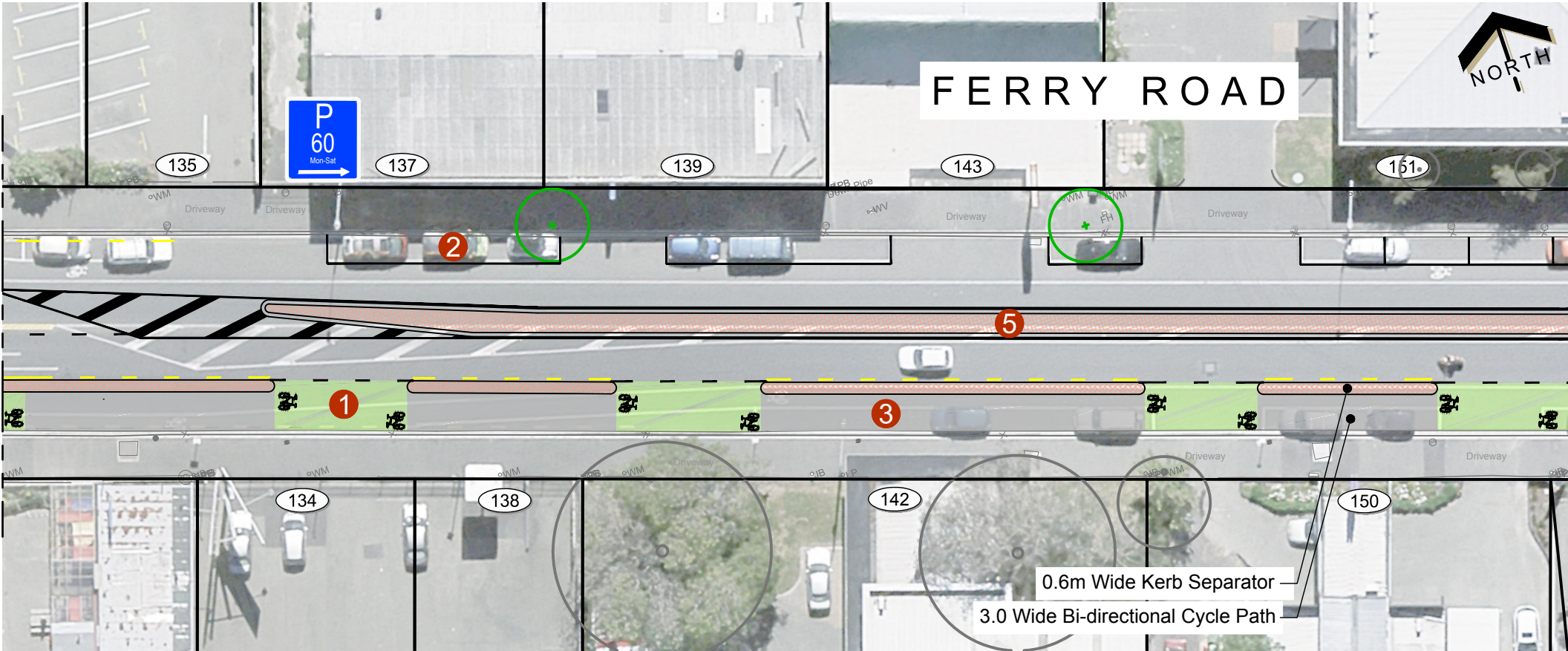


**FERRY ROAD - ALTERNATIVE OPTION (Fitzgerald Avenue)**  
Major Cycleways - Heathcote Expressway Route - Section 1  
Consultation Plan

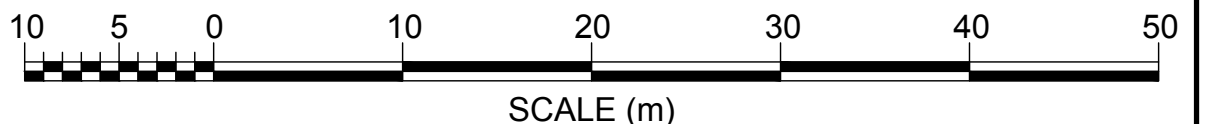
Sheet 1

Original Plan Size: A3  
ISSUE. 3 02/06/2017  
TP348901 MJR CP502843/01

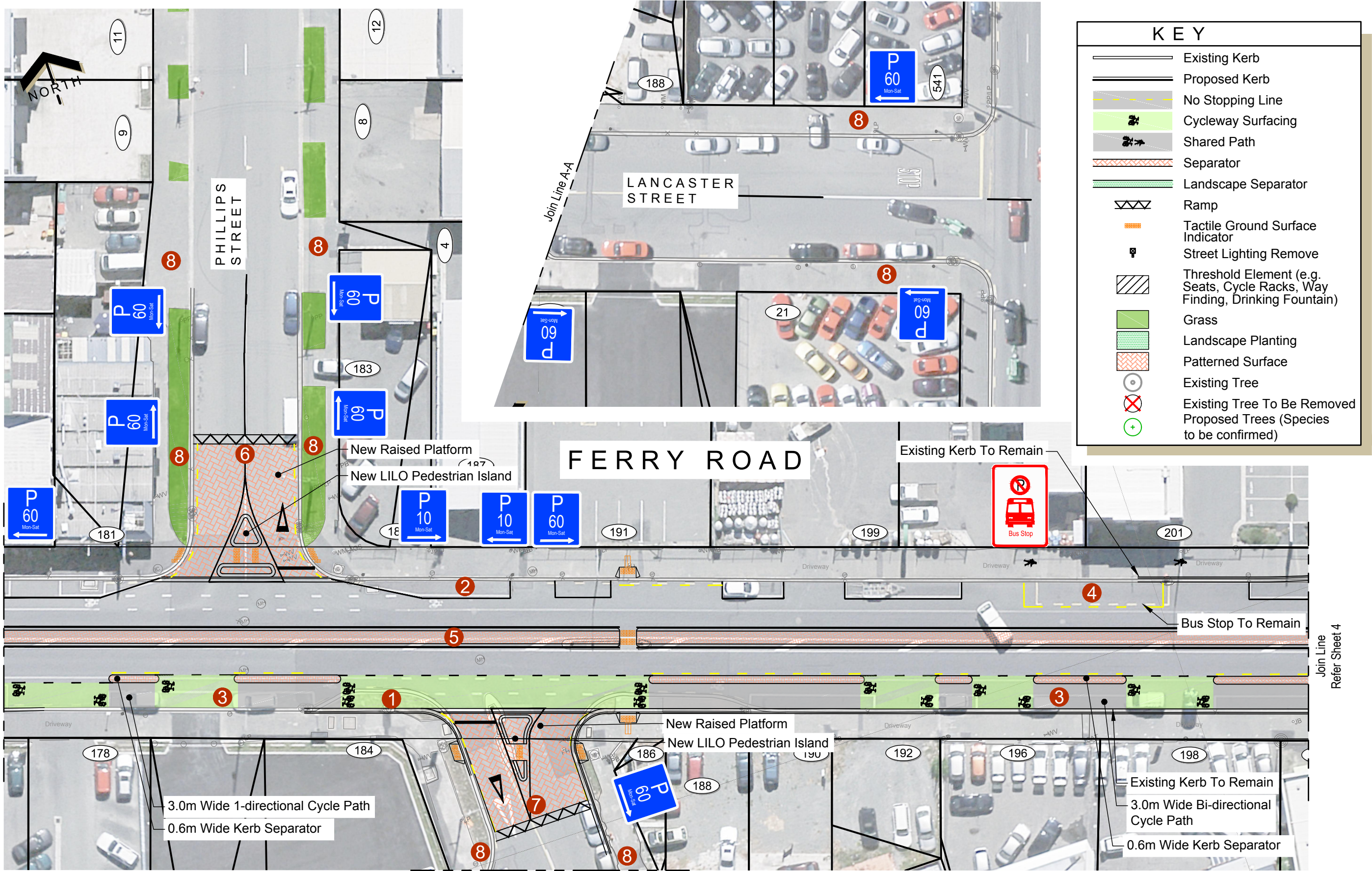
Original size mm  
100  
50  
30  
10  
0



KEY	
	Existing Kerb
	Proposed Kerb
	No Stopping Line
	Cycleway Surfacing
	Shared Path
	Separator
	Landscape Separator
	Ramp
	Tactile Ground Surface Indicator
	Street Lighting Remove
	Threshold Element (e.g. Seats, Cycle Racks, Way Finding, Drinking Fountain)
	Grass
	Landscape Planting
	Patterned Surface
	Existing Tree
	Existing Tree To Be Removed
	Proposed Trees (Species to be confirmed)



Original size mm  
100  
50  
30  
10  
0



KEY	
	Existing Kerb
	Proposed Kerb
	No Stopping Line
	Cycleway Surfacing
	Shared Path
	Separator
	Landscape Separator
	Ramp
	Tactile Ground Surface Indicator
	Street Lighting Remove
	Threshold Element (e.g. Seats, Cycle Racks, Way Finding, Drinking Fountain)
	Grass
	Landscape Planting
	Patterned Surface
	Existing Tree
	Existing Tree To Be Removed
	Proposed Trees (Species to be confirmed)

Join Line  
Refer Sheet 2

Join Line  
Refer Sheet 4



M:\150 - CAD\05\_HEW - S101\_Drawings\9001 - Consultation\MCR\_HEW\_S1\_CO\_9101-9106.dwg

100 Original size mm

Join Line Refer Sheet 3

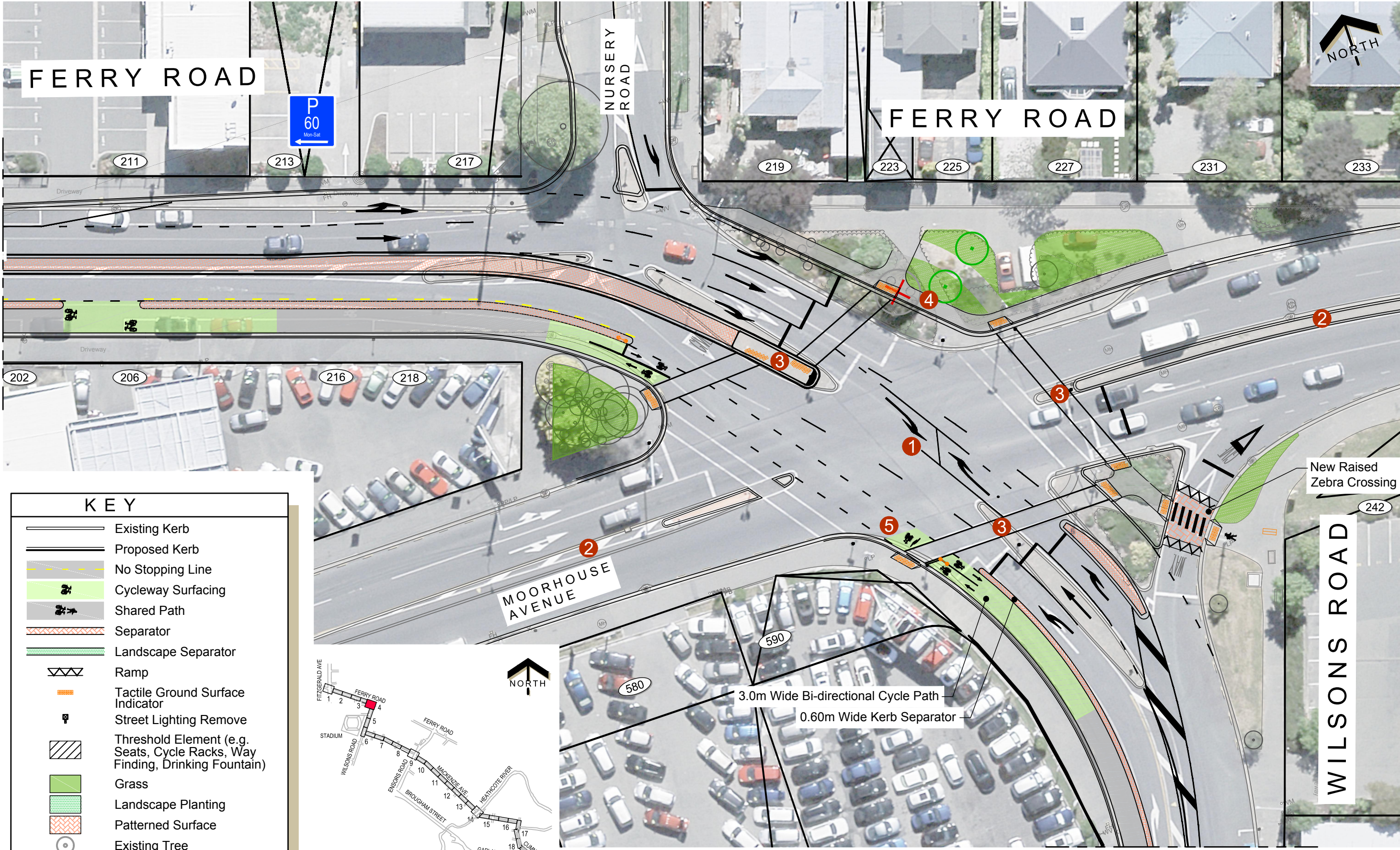
50

30

10

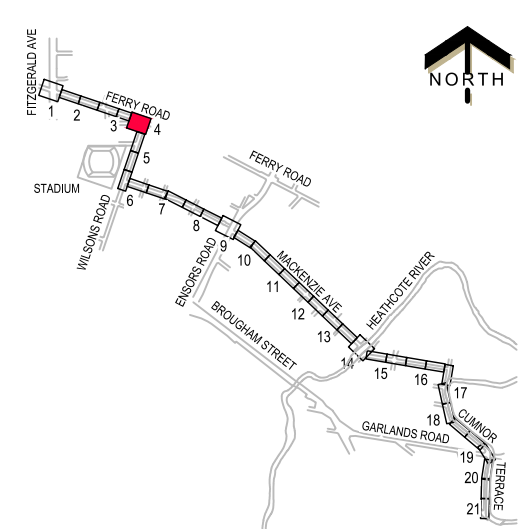
0

© Copyright Christchurch City Council © Aerial Photography Copyright Terralink International Ltd



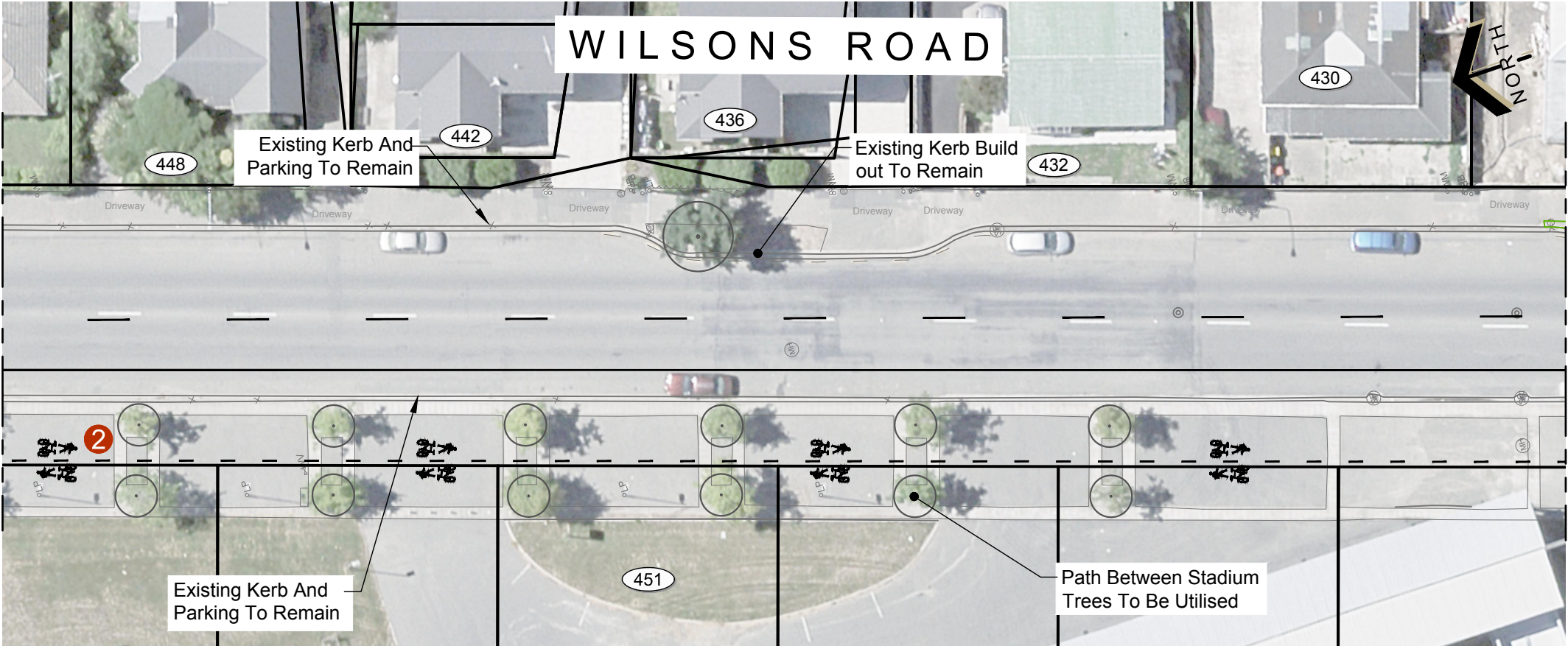
**KEY**

- Existing Kerb
- Proposed Kerb
- No Stopping Line
- Cycleway Surfacing
- Shared Path
- Separator
- Landscape Separator
- Ramp
- Tactile Ground Surface Indicator
- Street Lighting Remove
- Threshold Element (e.g. Seats, Cycle Racks, Way Finding, Drinking Fountain)
- Grass
- Landscape Planting
- Patterned Surface
- Existing Tree
- Existing Tree To Be Removed
- Proposed Trees (Species to be confirmed)



Join Line Refer Sheet 5

Original size mm  
100  
50  
30  
10  
0



**LOCALITY PLAN**  
N.T.S

KEY	
	Existing Kerb
	Proposed Kerb
	No Stopping Line
	Cycleway Surfacing
	Shared Path
	Separator
	Landscape Separator
	Ramp
	Tactile Ground Surface Indicator
	Street Lighting Remove
	Threshold Element (e.g. Seats, Cycle Racks, Way Finding, Drinking Fountain)
	Grass
	Landscape Planting
	Patterned Surface
	Existing Tree
	Existing Tree To Be Removed
	Proposed Trees (Species to be confirmed)



© Copyright Christchurch City Council © Aerial Photography Copyright Terralink International Ltd

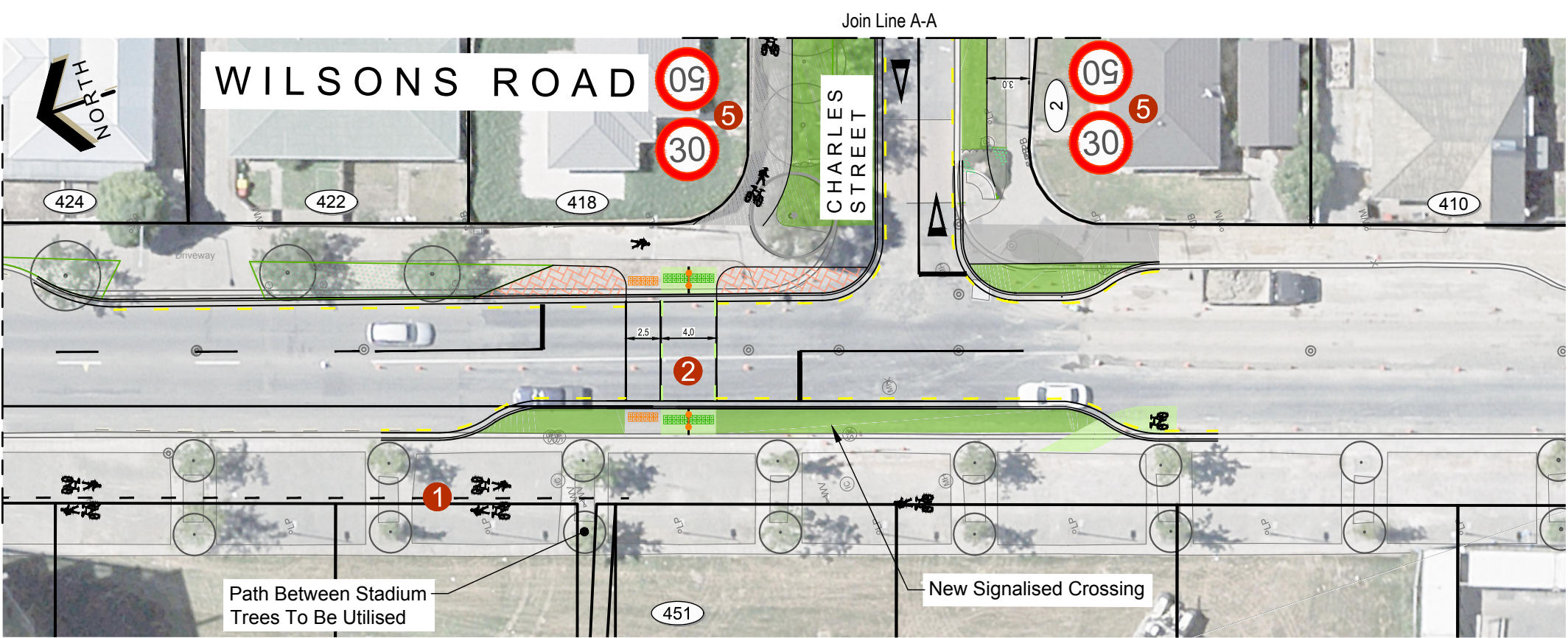


**WILSONS ROAD - ALTERNATIVE OPTION (Stevens Street)**  
Major Cycleways - Heathcote Expressway Route - Section 1  
Consultation Plan

Sheet 5

Original Plan Size: A3  
ISSUE. 3 02/06/2017  
TP348901 MJR CP502843/01

Original size mm  
100  
50  
30  
10  
0



KEY	
	Existing Kerb
	Proposed Kerb
	No Stopping Line
	Cycleway Surfacing
	Shared Path
	Separator
	Landscape Separator
	Ramp
	Tactile Ground Surface Indicator
	Street Lighting Remove
	Threshold Element (e.g. Seats, Cycle Racks, Way Finding, Drinking Fountain)
	Grass
	Landscape Planting
	Patterned Surface
	Existing Tree
	Existing Tree To Be Removed
	Proposed Trees (Species to be confirmed)

