

Attachment 1

Community Facilities and Heritage Programme

NOTE: For reporting purposes, the status of a project will no longer be reported once the public opening has occurred. Completion of projects can take up to a year depending on the Defect Notification period.

- [Opened to Public - Community Facilities and Heritage](#)
- [Demolitions Completed - Community Facilities](#)
- [Active Projects- Community Facilities](#)
- [Active Projects- Heritage](#)
- [Future Projects or On Hold - Community Facilities and Heritage](#)
- [Assets from tranche 2 requiring no further action or awaiting long term decision- Community Facilities](#)
- [Community Facilities Milestone Progress report- Community Facilities](#)

Opened to Public - Community Facilities and Heritage

Opened to Public 2017



Halswell Quarry – Crusher Building
Halswell-Hornby-Riccarton CB/ 4 October 2017



Halswell Quarry – Old Stone House
Halswell-Hornby-Riccarton CB/ 4 October 2017



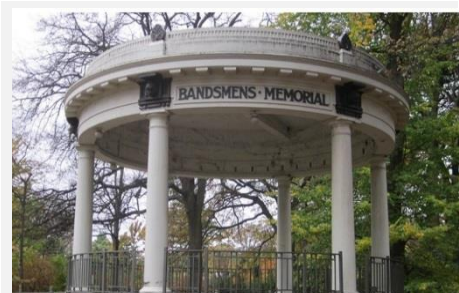
Halswell Quarry – Singlemen's Quarters
Halswell-Hornby-Riccarton CB/ 4 October 2017



Sumner Library, Community Centre & Museum
Linwood-Central-Heathcote CB/ 19 August 2017



Bishopdale Library and Community Centre
Fendalton-Waimairi-Harewood CB/ 22 July 2017



Hagley Park North - Bandsman Memorial Rotunda
Linwood-Central-Heathcote CB /5 July 2017



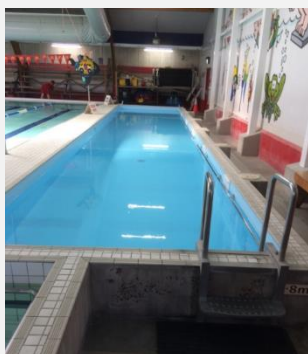
Governors Bay Old School House
Banks Peninsula CB/ 30 June 2017



Coronation Library (Akaroa)
Banks Peninsula CB /16 June 2017



Akaroa Court House
Banks Peninsula CB /16 June 2017



Wharenui Pool Building Strengthening
Halswell-Hornby-Riccarton CB/ 13 June 2017



Lyttelton (Upham) Clock Tower
Banks Peninsula CB/ 7 June 2017



Hagley Park North - RSA Bowling-Petanque Club
Linwood-Central-Heathcote CB/ 5 June 2017



Sign of the Takahe
Spreydon-Cashmere CB / 22 May 2017



Custom House, Akaroa
Banks Peninsula CB / 8 April 2017



Parklands Library- Landscaping
Coastal- Burwood CB / 21 April 2017



Lyttelton Library, Service Centre and Integration with Library EQ Repairs
Banks Peninsula CB / 13 March 2017



Stoddart Cottage – Earthquake repairs - Heritage
Banks Peninsula CB / March 2017



New Brighton Library EQ Repair
Coastal- Burwood CB / 13 Feb 2017



Kapuatohe Museum – EQ Repair and Strengthening. Heritage
Fendalton-Waimairi-Harewood CB / February 2017



Pioneer Womens Shelter
Linwood-Central-Heathcote CB / February 2017

Opened to Public 2016



Governors Bay community centre
Banks Peninsula CB / 14 December 2016



Heathcote Combined Community Facility
Linwood-Central-Heathcote CB / 14 December 2016



Memorial Cemetery Toilets – New Exeloo
Linwood-Central-Heathcote CB / 12 December 2016



Waimairi Cemetery Toilets- Strengthened
Fendalton-Waimairi-Harewood CB / 12 December 2016



Woodham paddling pool
Linwood-Central-Heathcote CB / 8 December 2016



Redcliffs Library
Linwood-Central-Heathcote CB / 2 December 2016



Mona Vale Homestead – EQ Repair, Strengthening and Maintenance- Heritage
Halswell-Hornby-Riccarton CB/ 25 November 2016



Avebury paddling pool
Linwood-Central-Heathcote CB / 23 November 2016



St Martins Community Facility (Former St Martins Public Library)
Spreydon-Cashmere CB/ 21 November 2016



Edgar Macintosh paddling pool
Papanui-Innes CB / 20 November 2016



Abberley paddling pool
Fendalton-Waimairi-Harewood CB/17 November 2016



Spencer Park paddling pool
Coastal- Burwood CB/ 5 November 2016



Cave Rock Signal Box – EQ Repairs- Heritage
Linwood-Central-Heathcote CB / November 2016



Sign of the Kiwi – EQ Repairs and Strengthening- Heritage
Spreydon-Cashmere CB/ November 2016



Kaianga Hall toilets
Papanui-Innes CB / 21 October 2016



English Park- EQ Repairs
Papanui-Innes CB / 21 October 2016



Mona Vale Fernery – EQ Repairs and Strengthening - Heritage
Halswell-Hornby-Riccarton CB / October 2016



Denton Oval - Grandstand & Amenities
Halswell-Hornby-Riccarton CB/ 28 September 2016



Lytelton Mt Herbert Board Room Replacement (25 Canterbury Street)
Banks Peninsula CB / 7 September 2016



Pigeon Bay Campground Toilet -
Banks Peninsula CB / 3 August 2016



Somerfield Community Centre
Spreydon-Cashmere CB / 15 July 2016



Governors Bay Headmasters House – EQ Repair, Strengthening and Maintenance- Heritage
Banks Peninsula CB / 14 July 2016



Wharenui Rec Centre
Halswell-Hornby-Riccarton CB / 1 July 2016



Lyttelton Plunket Rooms & Toy Library
Demolished & 15 year lease at Lyttelton Rec Centre
Banks Peninsula CB/ July 2016



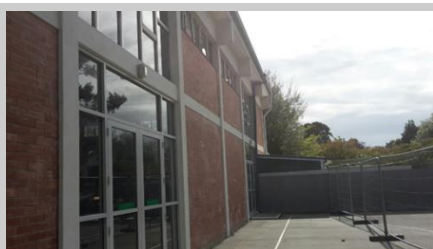
180 Smith Street - Library Archive Building
Linwood-Central-Heathcote CB / 30 June 2016



Rawhiti Domain - Golf Club Buildings
Coastal- Burwood CB / 23 June 2016



Upper Riccarton Library
Halswell-Hornby-Riccarton CB
Phase 2 Completed 31st May 2016
Phase 1 Completed 1st February 2016



Fendalton Community Centre
Fendalton-Waimairi-Harewood CB / 20 May 2016



Aranui Community Centre Rebuild- New Build
Coastal- Burwood CB / 19 May 2016



Halswell Domain toilet
Halswell-Hornby-Riccarton CB / 13 May 2016



Horseshoe Lake toilets
Coastal- Burwood CB / 13 May 2016



Mona Vale Lode – EQ Repair, Strengthening & Maintenance- Heritage
Halswell-Hornby-Riccarton CB / 6th May 2016



Heathcote Domain - Former Tennis Club Shed
Linwood-Central-Heathcote CB / 26 April 2016



Barrington Park - Cricket Club / Community Building
Spreydon-Cashmere CB / 22 April 2016



Barnett Park - Sumner/Redcliffs Crèche
Linwood-Central-Heathcote CB / 9 January 2016
(Decorative wall repairs completed 12 April 2016)



The Gaiety Hall – EQ Repair, Strengthening & Maintenance- Heritage
Banks Peninsula CB / 1st April 2016



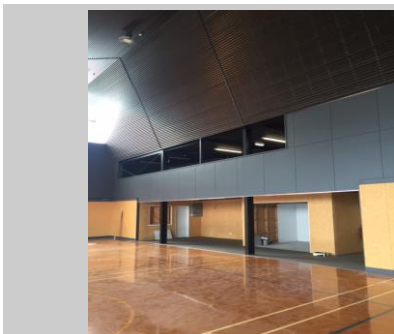
New Brighton Crèche
Coastal- Burwood CB / 28 March 2016



St Martins Opawa Toy Library
Spreydon-Cashmere CB / 14 March 2016



Tram Barn - Tramway Lane
Linwood-Central-Heathcote CB
Completed 11th November 2015- Roof repairs in March 2016



Lyttelton Recreation Centre and Trinity Hall Repair
Banks Peninsula CB / Completed 18th December 2015- Official Opening 20th February 2016



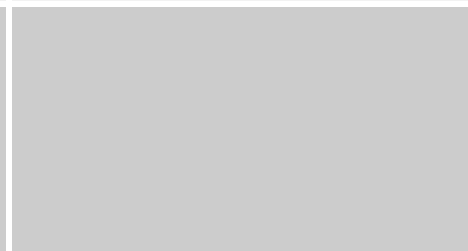
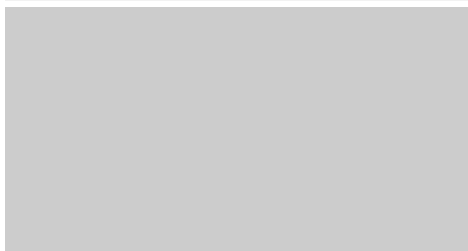
Lyttelton Recreation Ground – Pavilion and Shed #2
Banks Peninsula CB / 05 February 2016



**Grubb Cottage – EQ Repair and Maintenance-
Heritage**
Banks Peninsula CB / 2nd February 2016



North New Brighton Community Centre
Coastal- Burwood CB / 29 January 2016



Opened to Public 2015



Sumner Surf Club Toilets Rebuild
Linwood-Central-Heathcote CB / 11th December 2015



**Victoria Park Information Centre – EQ Repair &
Strengthening- Heritage**
Spreydon-Heathcote CB/ 15th December 2015



South Hagley netball toilets
Linwood-Central-Heathcote CB / 20th November 2015



Heathcote Domain Exeloo Toilet
Linwood-Central-Heathcote CB / 30th October 2015



Cashmere Valley Exeloo Toilets
Spreydon-Cashmere CB / 30th October 2015



Bexley Park Exeloo Toilet
Coastal- Burwood CB / 23rd October 2015



Linwood Resource Centre
Linwood-Central-Heathcote CB / 20th October 2015



Shirley Library EQ Repairs
Coastal- Burwood CB /16 October 2015



Avebury Workshed & Toilets – EQ Repair and Strengthening- Heritage
Linwood-Central-Heathcote CB / 13 October 2015



Akaroa Museum – EQ Repairs, Strengthening and Re-roof - Heritage
Banks Peninsula CB / 13 October 2015



Papanui Library EQ Repairs
Papanui-Innes CB /13 October 2015



Botanic Gardens Tea Kiosk - Strengthening & Repair Project
Linwood-Central-Heathcote CB / 02 October 2015



Le Bons Bay Exeloo Toilet
Banks Peninsula CB / 25th September 2015



Awa-iti Reserve Exeloo Toilet
Banks Peninsula CB / 20th September 2015



Dog Pound - Dog Shelter and Dwelling Portacom
Linwood-Central-Heathcote CB / 20th August 2015



Avon Park Exeloo Toilet
Linwood-Central-Heathcote CB / 17th August 2015



Duvuachelle Show Grounds Exeloo Toilet
Banks Peninsula CB / 12th August 2015



Sockburn Recreation Centre Strengthening and Repair
Halswell-Hornby-Riccarton CB / 7th August 2015



Bottle Lake Forest Information Centre
Coastal- Burwood CB / 31st July 2015



Duvuachelle Reserve and Campground - All Buildings
Banks Peninsula CB / 30th July 2015



Scarborough Beach - Jet Boat Shed
Linwood-Central-Heathcote CB / 21st July 2015



South New Brighton Park Exeloo Toilet
Coastal- Burwood CB / 10th July 2015



Middleton Park Public Toilet
Halswell-Hornby-Riccarton CB / 20th June 2015



Spreydon Library
Spreydon-Cashmere CB / 4th May 2015



Woolston Park Memorial to Fallen Soldiers and Pavilion Rebuild
Linwood-Central-Heathcote CB / Sports changing facilities- 8th June 2015, War Memorial Facility- 25th April 2015



Port Levy Pool Changing Shed
Banks Peninsula CB / 2nd April 2015



Cuthberts Green Softball Complex and Grandstand
Linwood-Central-Heathcote CB / 2nd April 2015



Withells Island Boat Sheds
Coastal- Burwood CB / 2nd April 2015



Edmonds Clock Tower – EQ Repairs & Strengthening- Heritage
Linwood-Central-Heathcote CB/ April 2015



Clare Park Pavilion and Changing sheds
Coastal- Burwood CB / 30th March 2015



Norman Kirk Pool Rebuild
Banks Peninsula CB / 12th February 2015



Hei Hei Community Centre – Repair & Strengthening
Halswell-Hornby-Riccarton CB / 28th January 2015



Cuthberts Green Pavilion EQ Repairs
Linwood-Central-Heathcote CB / 24th January 2015



Waltham Pool Rebuild
Linwood-Central-Heathcote CB / 17th January 2015



Cuthberts Green Softball Groundsmans Shed
Linwood-Central-Heathcote CB / 12th January 2015

Opened to Public 2014



Godley House – Foundation Remediation- Heritage
Banks Peninsula CB / December 2014



Scarborough Paddling Pool Rebuild
Linwood-Central-Heathcote CB / 20th December 2014



Yaldhurst Domain Toilet block strengthening
Fendalton-Waimairi-Harewood CB / November 2014



Waltham Park Pavilion Earthquake repair and Strengthening
Linwood-Central-Heathcote CB / October 2014



Avonhead Pavilion Earthquake repair and Strengthening
Fendalton-Waimairi-Harewood CB / October 2014



Victoria Clock (Jubilee) – EQ Repairs and Strengthening- Heritage
Linwood-Central-Heathcote CB / October 2014



Denton Oval - Amenities Below Grandstand
Halswell-Hornby-Riccarton CB / 22nd July 2014



Riccarton House – EQ Repairs and Strengthening- Heritage
Halswell-Hornby-Riccarton CB / May 2014



Jellie Park Recreation & Sports Centre - Main Plant Room Strengthening
Fendalton-Waimairi-Harewood CB / 31st January 2014

Opened to public before 2014



South Brighton Community Centre Transitional Facility
Coastal- Burwood CB / 8th November 2013



Linwood Community Arts Centre – EQ Repairs and Strengthening- Heritage
Linwood-Central-Heathcote CB / October 2013



Avebury House – EQ Repairs and Strengthening- Heritage
Linwood-Central-Heathcote CB / September 2013



Curators House – EQ Repairs and Strengthening- Heritage
Linwood-Central-Heathcote CB / November 2012



YHA Rolleston House – EQ Repairs and Strengthening- Heritage
Linwood-Central-Heathcote CB / November 2012



Beachcomber Restaurant – EQ Repairs - Heritage
Linwood-Central-Heathcote CB / November 2012



Cowles Stadium Earthquake repair and Strengthening
Linwood-Central-Heathcote CB / October 2012

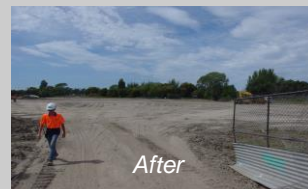
Demolitions Completed - Community Facilities



Robbie's Bar & Bistro Riccarton
Halswell-Hornby-Riccarton CB
Demolished September 2016



QE2 sports house
Coastal- Burwood CB
Demolished March 2016



Porritt park, the main stadium
Coastal- Burwood CB
Demolished March 2016



Cathedral Square Toilets
Linwood-Central-Heathcote CB



Ex-Model Railway Site - Andrews Crescent
Spreydon-Cashmere CB
Demolished December - 2015



Hagley Park North - RSA Bowling-Petanque Club
Linwood-Central-Heathcote CB
Demolished December - 2015



Linwood Nursery
Linwood-Central-Heathcote CB
Demolished November - 2015



Sea field park "the Lodge"
Coastal- Burwood CB
Demolished July - 2015



North Beach Community Crèche
Coastal- Burwood CB
Demolished July - 2015



Ferrymead reserve old toilets
Linwood-Central-Heathcote CB
Demolished June - 2015



Styx River reserve shed number two
Fendalton-Waimairi-Harewood CB
Demolished June - 2015



Cashmere Reserve Toilet
Spreydon-Cashmere CB
Demolished May - 2015



Styx River reserve living laboratory / dwelling and buildings
Fendalton-Waimairi-Harewood CB
Demolished May - 2015



Westminster park buildings x 2
Papanui-Innes CB
Demolished April - 2015



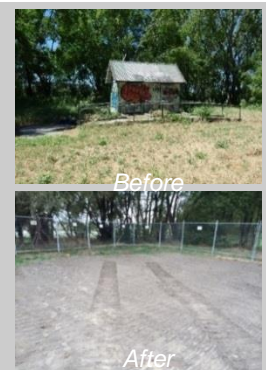
Avon park pavilion
Linwood-Central-Heathcote CB
Demolished April - 2015



Avon park toilet block
Linwood-Central-Heathcote CB
Demolished April - 2015



Birdsey Reserve Shed
Linwood-Central-Heathcote CB
Demolished March - 2015



Bexley Park Toilet block
Coastal- Burwood CB
Demolished March - 2015



Scott Park
Linwood-Central-Heathcote CB
Demolished Dec - 2014



Bromley Cemetery - Shed
Linwood-Central-Heathcote CB
Demolished Dec - 2014



South Brighton Motor Camp
Coastal CB
Demolished Dec - 2016

Active Projects- Community Facilities

Allandale Community Centre Repair

Banks Peninsula Community Board

Tranche 2

Community Facilities

Opening	November 2017	Current Phase / Sub-Phase	Executing Construction
Delegated Authority for concept Approval	Banks Peninsula Community Board in partnership with the Council Asset Owner, the Allandale Reserve Management Committee and other community members.		

Description of Work

Carry out earthquake repairs and strengthening to a minimum of 67% NBS. Return the building to the Allandale Reserves Committee to manage. Committee will have a voluntary role in tidying up and landscaping the grounds.

Current Status

The repairs to the foundations are complete. All demolition work required has been completed. New weatherboards have been installed and painted. A mainly new roof has been installed and painted. Construction is approximately 65% complete.



Allandale Community Centre

Jellie Park Recreation and Sports Centre

Fendalton-Waimairi-Harewood Community Board

Tranche 2

Workstream Rec & Sport

Opening	Repair work will be delivered in stages over 3 years.	Current Phase /Sub-Phase	Planning Procurement
Delegated Authority for concept Approval	CCC Internal staff building owner		

Description of Work

Jellie Park and Pioneer Recreation & Sport Centres have been combined into one project in order to allow for project cost and operational efficiencies. In addition, combining the two projects will enable Council to maximise the opening hours for both sites during repairs and construction.

Both Jellie and Pioneer have experienced significant earthquake damage that may begin to affect the operation and longevity of the facility if not repaired over the next 2-3 years. A scope for repairs includes earthquake repairs, energy efficiency renewals, building system renewals and accessibility improvements for the facility. A phased shutdown of these facilities is being planned in coordination with the work at Pioneer in order to minimise disruption to the levels of service, i.e. work on indoor pools is likely to be carried out while the outdoor pools are open (where possible). Details of the work and planned shutdowns will be made available once the scoping phase is complete in early 2017.

Current Status

- The contract for the new hydroslide has now been awarded and design is underway.
- The Building Consent for both Jellie Park and Pioneer has been lodged.
- The Request for Tender closed on 16 August 2017. A report to the Council is anticipated for 9 November 2017 to approve the contract works and to award the contract



RFT / Main Contractor Site Visit – July 2017

Pioneer Stadium & Pools Complex - Pools, Squash, Sports Hall

Spreydon-Cashmere Community Board

Tranche 2

Rec & Sport

Opening	Repair work will be delivered in stages over 3 years.	Current Phase / Sub-Phase	Planning Consenting
Delegated Authority for concept Approval	CCC Internal staff building owner		

Description of Work

Pioneer and Jellie Park Recreation & Sport Centres have been combined into one project in order to allow for project cost and operational efficiencies. In addition, combining the two projects will enable Council to maximise the opening hours for both sites during repairs and construction.

Pioneer Recreation & Sport Centre has earthquake damage throughout the building which needs to be addressed. Earthquake repairs will be combined with planned maintenance work & renewals and completed within the project. The phasing of work will be coordinated with those at Jellie Park Sport & Recreation Centre to ensure activities can be transferred to other facilities where possible. Due to the limited stock of gymnasium space in the City, Pioneer Stadium works (with the exception of urgent maintenance upgrades) will be deferred until after the opening of Metro Sports.

Current Status

- The Building Consent for both Jellie Park and Pioneer has been lodged.
- The Request for Tender closed on 16 August 2017. A report to the Council is anticipated for 9 November 2017 to approve the contract works and to award the contract.



Entry foyer and seating area at Pioneer, areas to be widened and opened up as a part of the renovation works to the facility

Riccarton Community Centre- New Build

Halswell-Hornby-Riccarton Community Board

Tranche 1

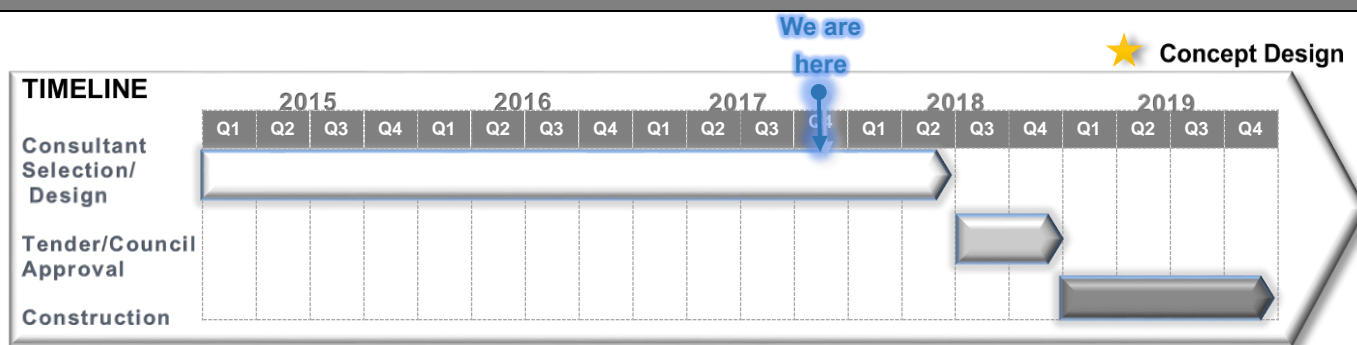
Community Facilities

Opening	Christmas 2019	Current Phase /Sub-Phase	Planning Concept Design
Delegated Authority for concept Approval	Council		

Description of Work

This project will build a new community facility to replace the Riccarton Community House. The facility will be built in the Northern portion of land owned by Council with the sale of land to the South providing the majority of project funding. A revised schematic was signed off by the Community Board in September 2017.

Current Status



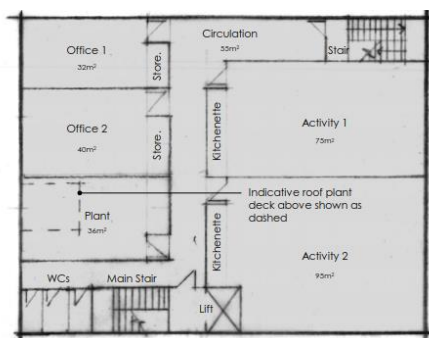
The Halswell Hornby Riccarton Community Board signed off on a revised two-storey schematic design on 12 September 2017. Revised scopes and pricing are currently being negotiated with the project team as part of progressing the new Concept Design. At the Board meeting it was agreed that an opening by Christmas 2019 will be targeted.



Artist's Impression of new design – cladding to be confirmed



Indicative Ground Floor Layout



Indicative First Floor Layout

St Albans Community Centre

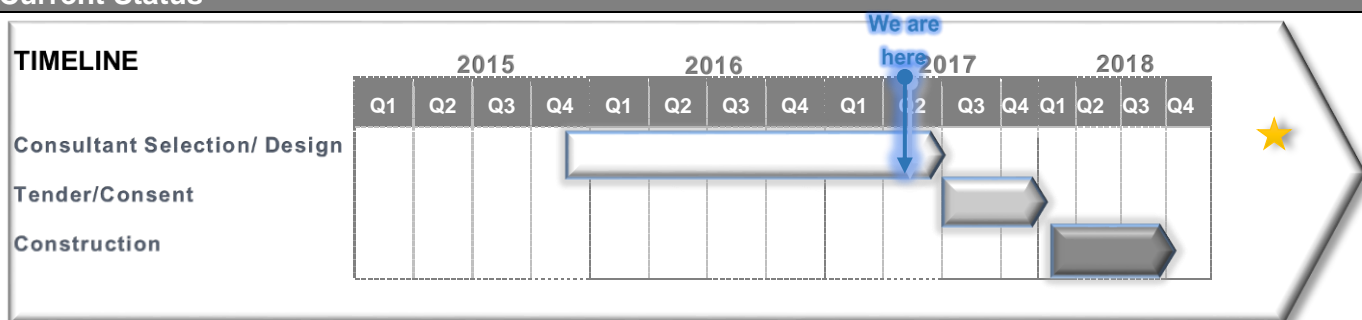
Papanui-Innes Community Board
Community Facilities

Opening	To be confirmed	Current Phase /Sub-Phase	On Hold
Delegated Authority for concept Approval	Papanui-Innes Community Board		
Description of Work			

Council is redeveloping the St Albans Community Centre at 1049 Colombo Street, 122 and 126 Caledonian Road. The original building was lost during the 2010 / 2011 earthquakes. An expansion to the former building was in the planning phase in 2010 and prior to the earthquakes. A temporary facility has been located on site to provide a facility for the new community and until the construction of the new facility is scheduled.

Project funding of \$3.128M was provided through the Council LTCCP June 2015.

Current Status



Resource Consent process is currently on hold pending progression of matters relating to 130 Caledonian Road (process external to this project). Once developments are confirmed on that process, project will recommence with first steps including conclusion of the Resource Consent and reconfirmation of Cross Laminated Timber supply status.



Artist's Impression of Caledonian Street view



Artist's Impression of Colombo Street view

St Albans Park - Pavilion/Toilets

Papanui-Innes Community Board
Workstream Parks

Opening	April 2018	Current Phase / Sub-Phase	Planning Detailed design
Delegated Authority for concept Approval	Business Owner/ Client and St Albans/ Pap-Inn Community Board		

Description of Work

St Albans Park Pavilion / Toilet is a 1 storey reinforced concrete block building which has suffered earthquake damage that makes necessary foundation releveling to repair. Repairing the building is not a viable option financially or functionally. Demolition/Re-Build has been determined the best course of action. Funding has been made available for the FY18.

Current Status

The proposed design below has been approved by the parks planner/sponsor business owner and will be distributed to the sports user groups and the Community Board prior to being released to the local community newspaper.

Works are currently in progress for the demolition of the existing facility. Asbestos testing is completed and a quote for the demolition is underway with a plan to have the existing facility gone by the end of November.

A tender for the new facility will be released in November with the construction coinciding with the sports field development and predominant closure of the park.



Design.

South Brighton Camping Ground - Combined

Coastal- Burwood Community Board

Tranche 2

Rec & Sports

Opening	October 2017	Current Phase / Sub-Phase	Executing Construction
Delegated Authority for concept Approval	CCC Internal staff and Building Owner		

Description of Work

The earthquakes of 2010/2011 badly damaged the camp ground buildings and waste water lines no longer function. The most severely damage ablution block (No. 2) has been demolished (completed December 2016).

The existing damaged sanitary drainage system is being replaced with a new pressurised sanitary system resilient to future earthquake and flooding events. Council Three Waters & Waste civil engineers supervised the system design to coordinate with their long term infrastructure plans for the South Brighton and South Shore area.

Current Status

Subject to weather, the contractor is due on site on Monday 9th October to complete road sealing and modifications to the sewer and drainage sumps. Work is expected to be completed in October.



Road to be sealed

Spencer Park Campground - All Buildings

Coastal- Burwood Community Board

Tranche 2

Workstream Rec & Sports

Opening	Early 2018 (Stage 2 – Amenities Block)	Current Phase / Sub-Phase	Executing Construction
Delegated Authority for concept Approval	CCC Internal staff building owner		

Description of Work

Spencer Park Phase 1 was completed on 10th June 2016 and included repairs to driveways, paving, ramps and parking areas.

Spencer Park Phase 2 will deliver new amenities buildings.

- *2 Separate Buildings* – Functional – Hygienic - Private
- *Location* – Superior Location – Functional – Future Flood Defence -
- *Facilities* – Diner Including Indoor / Outdoor Cooking and Dining – Male and Female Showers / Washrooms and Toilets
- *Storage and Cleaning* – Superior Facilities and Functional
- This new modern facility will provide a significant improvement to the holiday park that will afford the end user a superior experience when visiting.

Current Status

Works on site are progressing well now that ground issues have been overcome, but the contractor has recently reported they are unlikely to be able to make up time lost due to weather/ground conditions and an early 2018 completion is likely. All avenues for bringing this back to pre-Christmas 2017 will be explored.

Foundations for both the Diner and Washroom blocks are now poured and blockwork is significantly advanced on the Washroom block. Redesign of the sewer system is awaited.



Washroom Block



Diner Block

Woolston Community Facility- New Build

Linwood-Central-Heathcote Community Board

Tranche 2

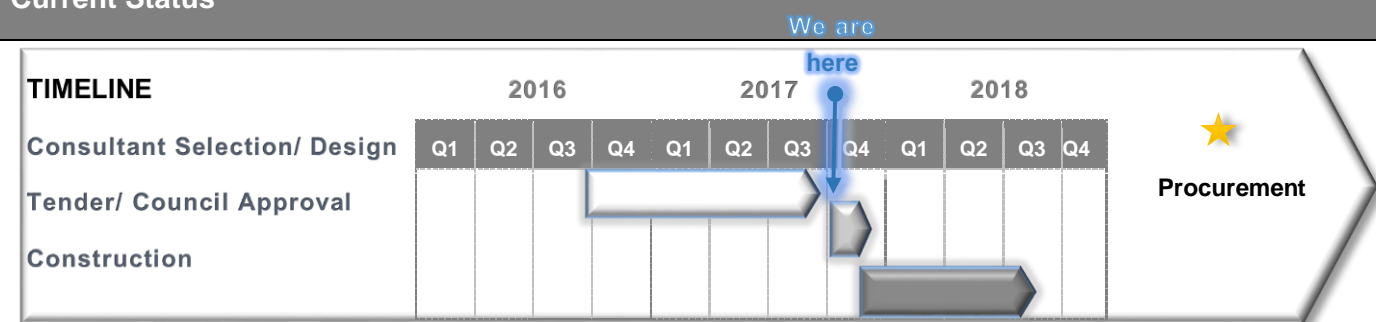
Community Facilities

Opening	Mid 2018	Current Phase Sub-Phase	/	Planning Procurement
Delegated Authority for concept Approval	Linwood-Central-Heathcote Community Board			

Description of Work

Replace the Woolston Community Library facility which was destroyed in the earthquakes – on the existing site 689 Ferry Road.

Current Status



We are still on track to be on site in November:

- Detailed design is complete.
- The Building Consent Application has been submitted and we are waiting for feedback from the Consent team.
- The Request for Tender for the main contractor is out in the market and will close on 25 October.
- A quote for the redesign of the car park and adjacent laneway is expected from contractors on 13 October. This work can be done simultaneously with the construction of the facility.



Artist's impression at the developed design stage

Active Projects- Heritage

Addington Water Station

Halswell-Hornby-Riccarton

Tranche 2

Heritage

Opening	2018-Q1	Current Phase / Sub-Phase	Executing Construction
Delegated Authority for concept Approval	CCC Internal staff building owner		

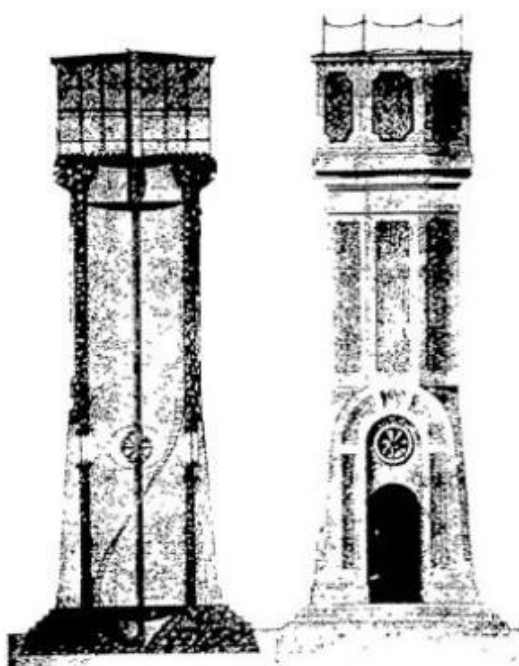
Description of Work

The Heritage listed Addington Water Station, (first concrete reinforced Water Tower in the World), currently has a 68%NBS and remains closed to protect against further damage to the heritage fabric.

Remediation of earthquake related cracking and displacement of the cast concrete structure is required to return this asset back to the community.

Current Status

The Building Consent Exemption and the Resource Consent have been granted. The main Contractor has been procured and has commenced on site. The building has been scaffolded after it was moss treated and washed. The removal of the drummy plaster has been completed and crack injection underway. Scrapings taken from the tank did not reveal the original colours and these are being researched.



Akaroa Service Centre

Banks Peninsula

Tranche 1

Heritage

Opening	2018-Q2	Current Phase / Sub-Phase	Executing Construction
Delegated Authority for concept Approval	CCC Internal staff building owner		

Description of Work

The Akaroa Service Centre currently has a 100%NBS but remains closed. This is as a result of earthquake damage and a desire to undertake alterations. Proposed works involve a new layout to the ground floor, upgrading data and heating, re-opening the balcony on the north east corner of the first floor and any upgrades necessary to comply with the building code including the installation of a new accessible toilet and ramp.

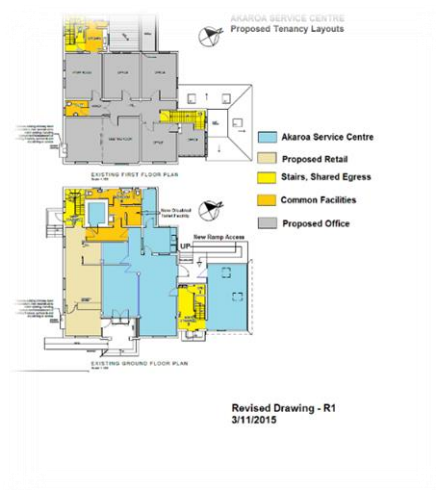
Current Status

Stage 1 - Exterior. All works have been completed. Painting defects are occurring on the building. Investigations have been undertaken by the contractor and paint manufacturer to develop a solution. Multiple repair methodologies are being trialed on some sections of the building to determine the best solution. Results will not be known until Summer.



Stage 2 – Internal Fit-out. Detailed design has been completed. The design has been approved by the Akaroa Design and Appearance Committee. The Resource Consent and Building Consent has been approved.

The contractor has commenced on site as at the 28th of August 2017. The interior fit out works are progressing with the strip out and internal partition framing works largely completed.



Avon River Wall

Linwood-Central-Heathcote Community Board

Council Approved

Heritage

Opening	2018-Q2	Current Phase / Sub-Phase	Executing Construction
Delegated Authority for concept Approval	CCC Internal staff building owner		

Description of Work

The Avon River Wall is part of a group of structures commissioned by Thomas John Edmonds with construction on the site starting in 1929. Structural repair and reinstatement of the Edmonds Band Rotunda river retaining walls falls within the City Services Capital Delivery Group and has been prioritised by elected members into Work Package 3.

Current Status

The contract for construction works has been awarded, site establishment has been undertaken following a pre-start meeting to ensure all relevant protection and TPP requirements are in place.

The Archaeological Authority and Resource Consent have been approved.

A brief schedule of the works will entail complex restraint and dewatering of the river whilst maintaining a strong ecological standpoint. New piling and foundations to severely damaged portions of the wall and reinstatement of new and repaired detailed plaster work.

There has been a stand down period in order for Otakaro to complete required underground works on the site area as well as adverse weather and high river levels which has affected the ability to work in the Avon.



Community Centre – Cracroft (Old Stone House)

Spreydon-Cashmere

Tranche 1

Heritage

Opening	2017-December	Current Phase / Sub-Phase	Executing Construction
Delegated Authority for concept Approval	CCC Internal staff building owner		

Description of Work

The Old Stone House currently has a 15%NBS and is closed.

This asset has been approved for repair and strengthening to 67%NBS. The works will involve reinstatement of the mezzanine connections, new diaphragm wall and roof connections, lateral wall support works, deconstruction and reconstruction of the chimneys as stone veneers around steel frames, the replacement of the stone lintels and the sealing of the concrete walls and foundations with pressure injected epoxy.

Current Status

EQ repair and strengthening work commenced in August 2016.

Progress to date is as follows: The structural work to the building has been completed and all remedial work to the Gable ends, Dormers and the North and South store room areas has also been completed. The roof strengthening and installation of the new slate tiles is finished with the building is back to water tight. The project is now nearing completion.

Work currently being undertaken to the interior, painting, skirting installation, the testing and commissioning of all services including electrical, fire protection and HVAC. Exterior work still to be undertaken is the finishing off of the painting, replacement of the water pipes and storm water and the landscaping to the site. Expect completion for COC is the end of November.



Deteriorated Stone Work to end Gable Walls



Steel Diaphragm to Roof after installation

Edmonds Poplar Crescent Pavilion

Linwood-Central-Heathcote Community Board

Tranche 2

Heritage

Opening	2018-Q1	Current Phase / Sub-Phase	Executing Procurement
Delegated Authority for concept Approval	CCC Internal staff building owner		

Description of Work

Edmonds Poplar Crescent Pavilion currently has a 100%NBS but remains closed due to damage to entrance steps.

The works will predominantly focus around the foundation and entrance steps to this structure.

Current Status

The repair and strengthening works to the Pavilion will include new foundations to front and rear elevations including reinstatement of the damaged steps. Internal bracing of the sill areas and repairs to the terrazzo flooring.

Detailed design is complete. A Building Consent Exemption has been approved. The Heritage Works Plan has been approved and procurement process is underway.

The tender has been completed and contract awarded, the required pre-start meeting and subsequent site establishment will be undertaken in early October.



Langlois-Eteveneaux Cottage (LE Cottage)

Banks Peninsula

Tranche 2

Heritage

Opening	2018-Q1	Current Phase / Sub-Phase	Executing Construction
Delegated Authority for concept Approval	CCC Internal staff building owner		

Description of Work

LE Cottage currently has a 51%NBS and is closed due to construction.

Landscaping works, enclosing rear building viewing windows, make safe chimney, repaint interior and exterior of building.

Current Status

Resource and Building Consent has been granted and the archaeological authority has been approved. Works were placed on hold when unexpected fabrics were uncovered.

A revised scope has been agreed due to the above discovery. An amended Building and Resource Consent has been approved and an archaeological authority application is being processed. The contractor has begun on-site, installed all protection requirements and is in the process of removing the east elevation exterior windows.



Mona Vale Gatehouse

Fendalton-Waimairi-Harewood

Tranche 1

Heritage

Opening	2017-November	Current Phase / Sub-Phase	Executing Construction
Delegated Authority for concept Approval	CCC Internal staff building owner		

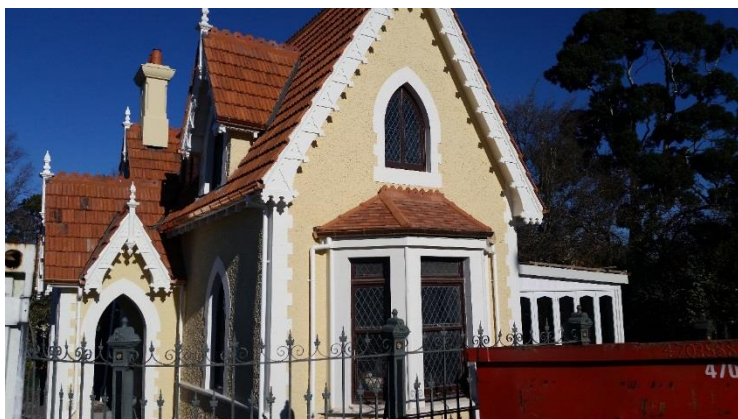
Description of Work

The Mona Vale Gatehouse currently has a 10%NBS and is closed.

This asset requires significant repair and strengthening to all elevations of the building to increase its seismic capability of restraint. This includes foundation, walls and roof sections.

Current Status

Construction works are complete with some minor defects being remediated. The additional works to the driveway and pathways nearing completion.



Nurses Memorial Chapel

Linwood-Central-Heathcote Community Board

Tranche 2

Heritage

Opening	2018-August	Current Phase / Sub-Phase	Executing Construction
Delegated Authority for concept Approval	CCC Internal staff building owner		

Description of Work

Undertake EQ damage repairs and strengthen the building within the range of 50 to 67% NBS. This strengthening scheme is based around the need to conserve the interior features and fabric.

Current Status

The work has been approved and will be undertaken using a Heritage Works Plan rather than a Resource Consent. A Building Consent has been approved and issued for the works.

The main contractor has established on site and installed the site office, security fencing and have completed the first stage of the Temporary Protection Plan. H&S documentation has been completed and the protocol for this have been established.

The removal of the stain glass windows and the Reredos has been completed. Work to the basement concrete is currently underway as part of the first stage to complete. Asbestos has been found to an area of the basement. Rescheduling of the programme and works in order to stay on programme due to the Asbestos has been agreed. Next stage is for the waterproofing of the underside of the slab and the pouring of the new slab to the basement.



Reredos and timber panelling to the back of the Altar.



Risingholme Community Centre & Homestead

Linwood-Central-Heathcote Community Board

Tranche 1

Heritage

Opening	2019-Q1	Current Phase / Sub-Phase	Executing Procurement
Delegated Authority for concept Approval	CCC Internal staff building owner		

Description of Work

Works to remediate the asset include the removal of all lathe and plaster ceilings as well as designated lathe and plaster walls, reconstruction of the chimneys as brick veneers around steel frames, the installation of roof and wall diaphragms, introduction of ceiling diaphragms on both the ground & first floor and the repair of the remaining lathe & plaster walls. Foundation works may also be required.

Current Status

On the evening of the 6th June 2016 a fire started on the premises which has caused substantial damage to the first floor and roof areas. An initial damage assessment has been completed by the project engineers and architect to assess the damage caused. This report has now been completed and the redesign undertaken. All documentation is now in for a RC and BC and we are waiting approval for these items.

Tenders for the main contract have now closed and the tender evaluation process is currently underway. On completion of this the main contractor will be appointed to start the building and strengthening works.



First floor fire damage underneath the scaffolding structure and wrap.

Rose Historic Chapel

Linwood-Central-Heathcote Community Board
Tranche 1
Heritage

Opening	2017-December	Current Phase / Sub-Phase	Executing Construction
Delegated Authority for concept Approval	CCC Internal staff building owner		

Description of Work

The Rose Historic Chapel currently has a 10%NBS and is closed.

Works to remediate the asset include strengthening of the walls and inner ties, improvement of the foundations and tying of the roof structure.

Current Status

Construction commenced in June 2016

All new structural work to the Chapel has been completed and this has been signed off by the engineer. The cladding of the exterior stone work to the front of the Chapel has also been completed including the Limestone Rose window. The new slate roof to the entrance is installed. To the rear or Sanctuary end the stone work is approximately 80% complete. Slate roofing to the Nave is 70% complete. The installation of the stain glass windows has commenced.

The next stages are to complete the interior, plastering of the walls and installation of the plaster details has commenced. The repairs to the Vestry sarking and all the new Rimu sarking to the mezzanine and its floor has now been installed. The spiral staircase is installed and we are currently working on the top balustrade. The first fix for the services has been completed and once the plastering has been completed the painters will start on the interior. The floor tiles will be completed at the end of the painting.



Refurbished spiral staircase



Stained glass window works

Rose Window reconstruction

Signal Box Norwich Quay

Banks Peninsula

Tranche 2

Heritage

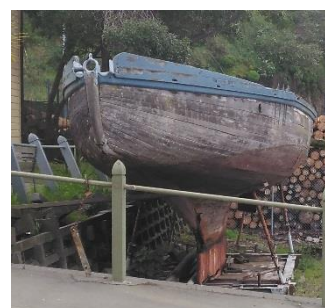
Opening	2018-Q2	Current Phase / Sub-Phase	Executing Procurement
Delegated Authority for concept Approval	CCC Internal staff building owner		

Description of Work

Norwich Quay Signal Box is categorized as a building of "Significant" Heritage Value in the Christchurch City Council District Plan. The building performed well in the Canterbury Earthquakes however repairs to the retaining wall are required and an assessment of deferred maintenance items needs to be completed.

Current Status





Retaining Wall Detailed Design have been received. Consultation with the Lyttelton Port Company has also been undertaken. Revised designs to include the original balustrade in a compliant fence above the crib wall has been completed, approved by the CCC Heritage team and sent out for pricing. Contractor quotes have been received and evaluated. However, before work can begin, the Heritage boat on site is required to be moved. Negotiations for this to happen are underway.



Future Projects or on hold – Community Facilities and Heritage

Asset Name	Status	Community Board	Target Start Date
Parklands Library- Community Facilities Completed Stage 1 Repair underground Pipes and Stage 2 Landscaping. Stage 3: Earthquake repairs to start in 2019 due to the need to fit this work in with the whole Christchurch City Libraries Programme. Consequently, the project will not be reported upon further until the project recommences in July 2018.	Future	Coastal- Burwood	1 July -2018
Shirley Community Centre- Community Facilities The capital budget for this project has been deferred for a minimum of two years as part of the Annual Planning process. Consequently, the project will not be reported upon further until the project recommences.	Future	Papanui-Innes	1-July-2019
Cracroft Caverns Reserve - Cashmere Caverns- Community Facilities	On Hold	Spreydon-Cashmere	TBC
St Albans Crèche- Community Facilities Project is on hold until an alternative location can be found for the crèche to operate while the works are underway.	On Hold	Papanui-Innes	TBC
Centennial Hall - Spreydon Community Centre- Community Facilities On hold while client completes strategic planning	On Hold	Spreydon-Cashmere	TBC
Opawa Public Library Earthquake Repairs- Community Facilities This project is on hold while the asset owner explores other options within the budget. Pre-tender estimates have exceeded the budget.	On Hold	Linwood-Central-Heathcote	TBC
Former Council Stables – Donald St- Heritage Awaiting Asset Owner direction	On Hold	Banks Peninsula	TBC
Kukupu Hostel - Heritage CCC are currently looking into the future use of the building as this will determine the design process for the repair and strengthening of the property. This asset is currently on hold awaiting a decision on future use. Consequently, the project will not be reported upon further until taken off hold.	On Hold	Banks Peninsula	TBC
Little River (Coronation) Library- Heritage The area traditionally suffers from flooding and as this building is affected, we are currently looking at potential solutions for this facility alone. A report has been completed and issued to Council for review and comment. The flooding report has several different options for the protection of the property and this is currently being expanded and initial budget estimate figures completed for further review. Consequently, the project will not be reported upon further until the project recommences.	On Hold	Banks Peninsula	TBC
Kaputohe Dwelling- Heritage This project has been re-phased, as part of the Annual Plan, meaning funding will be available 19 / 20. Consequently, the project will not be reported upon further until the project recommences.	Future	Fendalton-Waimairi-Harewood	2018-2019
Thomas Edmond Band Rotunda - Heritage This project has been re-phased, as part of the Annual Plan, meaning funding will be available 18/19. Consequently, the project will not be reported upon further until the project recommences	Future	Linwood-Central-Heathcote	2018-2019
Risingholme Hall – Heritage Council approved on 5 October 2017 - Asset repair be put on hold until future use is determined	On Hold	Linwood-Central-Heathcote	TBC
Chokebore Lodge – Heritage Council approved on 5 October 2017 - Asset repair be put on hold until future use is determined	On Hold	Halswell-Hornby-Riccarton	TBC
Mona Vale Bathhouse – Heritage Council approved on 5 October 2017 - Asset repair be put on hold until future use is determined	On Hold	Halswell-Hornby-Riccarton CB	TBC
Penfolds Cob Cottage – Heritage Council approved on 5 October 2017 - Asset repair be put on hold until future use is determined	On Hold	Linwood-Central-Heathcote CB	TBC

Assets from Tranche 2 requiring no further action or awaiting long term decision- Community Facilities

<p>Milton St Depot - #3 Shed- demolition Linwood-Central-Heathcote CB</p>		<p>Asset Owner does not wish to proceed with any demolition work while they consider the future use of this site.</p>
<p>Linwood Library Linwood-Central-Heathcote CB</p>		<p>The Linwood Library is currently operating out of Eastgate Mall. Services for the area previously occupied by Linwood Library are to be reviewed. Funding will be held in future year budgets until such time as this work has been completed.</p>
<p>Pages Road Depot - Buildings Linwood-Central-Heathcote CB</p>		<p>Project has been cancelled as it has been discovered that the property is owned by Water and Waste who no longer have a need for it. Presently used for the storage of Heritage items which will define when the facility will be demolished.</p>
<p>Cathedral Square Toilets Linwood-Central-Heathcote CB</p>		<p>This budget is being held in future years for the following reasons: There is too much uncertainty around what the Cathedral Square Anchor Project will be and where/how many public toilets will be required. The current temporary toilets in the square are rented and the lease has recently been re-negotiated until the end of November 2016</p>

Community Facilities Milestone Progress report for all Community Boards (exclude Heritage)

Milestone Progress October 2017				
From Aug -16 to Oct -17		▼ Aug-17 Sep-17 Total to date		
Project Brief Validated (IT Initiate Complete) ★				3
Concept Design Complete ★				8
Detailed Design Completed ★			1	7
Woolston Community Facility		✓		
Building Consent Addressed ★			1	5
Woolston Community Facility		✓		
Resource Consent Addressed ★				5
Tendering ★				6
Possession of Site - Main Building Contractor ★				5
Construction Completed ★				11
Open to Public ★			1	11
Sumner Community Facility (Centre & Library) Rebuild		✓		
Total to date		1	2	61