

Attachment 1

Community Facilities and Heritage Programme

NOTE: For reporting purposes, the status of a project will no longer be reported once the public opening has occurred. Completion of projects can take up to a year depending on the Defect Notification period.

- [Opened to Public - Community Facilities and Heritage](#)
- [Demolitions Completed - Community Facilities](#)
- [Active Projects- Community Facilities](#)
- [Active Projects- Heritage](#)
- [Future Projects or On Hold - Community Facilities and Heritage](#)
- [Assets from tranche 2 requiring no further action or awaiting long term decision- Community Facilities](#)
- [Community Facilities Milestone Progress report- Community Facilities](#)

Opened to Public - Community Facilities and Heritage

Opened to Public 2017



Mona Vale Gatehouse

Fendalton-Waimairi-Harewood CB/ 9 November 2017



Edmonds phone cabinet/telephone kiosk

Linwood-Central-Heathcote CB/ 19 August 2017



Halswell Quarry – Crusher Building

Halswell-Hornby-Riccarton CB/ 4 October 2017



Halswell Quarry – Old Stone House

Halswell-Hornby-Riccarton CB/ 4 October 2017



Halswell Quarry – Singlemen's Quarters

Halswell-Hornby-Riccarton CB/ 4 October 2017



Sumner Library, Community Centre & Museum

Linwood-Central-Heathcote CB/ 19 August 2017



Bishopdale Library and Community Centre

Fendalton-Waimairi-Harewood CB/ 22 July 2017



Hagley Park North - Bandsman Memorial Rotunda

Linwood-Central-Heathcote CB /5 July 2017



Governors Bay Old School House

Banks Peninsula CB/ 30 June 2017



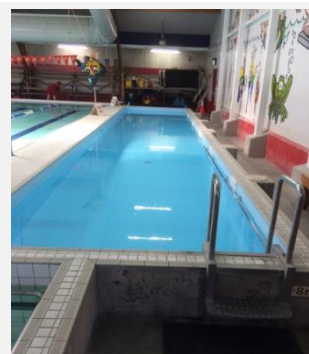
Coronation Library (Akaroa)

Banks Peninsula CB /16 June 2017



Akaroa Court House

Banks Peninsula CB /16 June 2017



Wharenui Pool Building Strengthening

Halswell-Hornby-Riccarton CB/ 13 June 2017



Lyttelton (Upham) Clock Tower
Banks Peninsula CB/ 7 June 2017



Hagley Park North - RSA Bowling-Petanque Club
Linwood-Central-Heathcote CB/ 5 June 2017



Sign of the Takahe
Spreydon-Cashmere CB/ 22 May 2017



Custom House, Akaroa
Banks Peninsula CB/ 8 April 2017



Parklands Library- Landscaping
Coastal- Burwood CB/ 21 April 2017



Lyttelton Library, Service Centre and Integration with Library EQ Repairs
Banks Peninsula CB/ 13 March 2017



Stoddart Cottage – Earthquake repairs - Heritage
Banks Peninsula CB/ March 2017



New Brighton Library EQ Repair
Coastal- Burwood CB/ 13 Feb 2017



Kaputohe Museum – EQ Repair and Strengthening. Heritage
Fendalton-Waimairi-Harewood CB / February 2017



Pioneer Womens Shelter
Linwood-Central-Heathcote CB/
February 2017

Opened to Public 2016



Governors Bay community centre
Banks Peninsula CB/ 14 December 2016



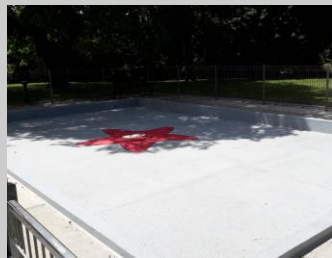
Heathcote Combined Community Facility
Linwood-Central-Heathcote CB/
14 December 2016



Memorial Cemetery Toilets – New Exeloo
Linwood-Central-Heathcote CB / 12 December 2016



Waimairi Cemetery Toilets- Strengthened
Fendalton-Waimairi-Harewood CB/12 December 2016



Woodham paddling pool
Linwood-Central-Heathcote CB /8 December 2016



Redcliffs Library
Linwood-Central-Heathcote CB / 2 December 2016



Mona Vale Homestead – EQ Repair, Strengthening and Maintenance- Heritage
Halswell-Hornby-Riccarton CB/ 25 November 2016



Avebury paddling pool
Linwood-Central-Heathcote CB / 23 November 2016



St Martins Community Facility (Former St Martins Public Library)
Spreydon-Cashmere CB/ 21 November 2016



Edgar Macintosh paddling pool
Papanui-Innes CB / 20 November 2016



Abberley paddling pool
Fendalton-Waimairi-Harewood CB/17 November 2016



Spencer Park paddling pool
Coastal- Burwood CB/ 5 November 2016



Cave Rock Signal Box – EQ Repairs- Heritage
Linwood-Central-Heathcote CB / November 2016



Sign of the Kiwi – EQ Repairs and Strengthening- Heritage
Spreydon-Cashmere CB/ November 2016



Kaianga Hall toilets
Papanui-Innes CB / 21 October 2016



English Park- EQ Repairs
Papanui-Innes CB / 21 October 2016



Mona Vale Fernery – EQ Repairs and Strengthening - Heritage
Halswell-Hornby-Riccarton CB / October 2016



Denton Oval - Grandstand & Amenities
Halswell-Hornby-Riccarton CB/ 28 September 2016



Lyttelton Mt Herbert Board Room Replacement (25 Canterbury Street)
Banks Peninsula CB / 7 September 2016



Pigeon Bay Campground Toilet -
Banks Peninsula CB / 3 August 2016



Somerfield Community Centre
Spreydon-Cashmere CB / 15 July 2016



Governors Bay Headmasters House – EQ Repair, Strengthening and Maintenance- Heritage
Banks Peninsula CB / 14 July 2016



Wharenui Rec Centre
Halswell-Hornby-Riccarton CB / 1 July 2016



Lyttelton Plunket Rooms & Toy Library
Demolished & 15 year lease at Lyttelton Rec Centre
Banks Peninsula CB/ July 2016



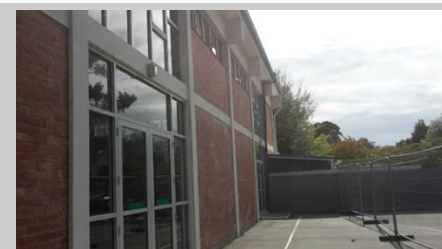
180 Smith Street - Library Archive Building
Linwood-Central-Heathcote CB / 30 June 2016



Rawhiti Domain - Golf Club Buildings
Coastal- Burwood CB / 23 June 2016



Upper Riccarton Library
Halswell-Hornby-Riccarton CB
Phase 2 Completed 31st May 2016
Phase 1 Completed 1st February 2016



Fendalton Community Centre
Fendalton-Waimairi-Harewood CB / 20 May 2016



Aranui Community Centre Rebuild- New Build
Coastal- Burwood CB / 19 May 2016



Halswell Domain toilet
Halswell-Hornby-Riccarton CB / 13 May 2016



Horseshoe Lake toilets
Coastal- Burwood CB / 13 May 2016



Mona Vale Lode – EQ Repair, Strengthening & Maintenance- Heritage
Halswell-Hornby-Riccarton CB / 6th May 2016



Heathcote Domain - Former Tennis Club Shed
Linwood-Central-Heathcote CB / 26 April 2016



Barrington Park - Cricket Club / Community Building
Spreydon-Cashmere CB / 22 April 2016



Barnett Park - Sumner/Redcliffs Crèche
Linwood-Central-Heathcote CB / 9 January 2016
(Decorative wall repairs completed 12 April 2016)



The Gaiety Hall – EQ Repair, Strengthening & Maintenance- Heritage
Banks Peninsula CB / 1st April 2016



New Brighton Crèche
Coastal- Burwood CB / 28 March 2016



St Martins Opawa Toy Library
Spreydon-Cashmere CB / 14 March 2016



Tram Barn - Tramway Lane
Linwood-Central-Heathcote CB
Completed 11th November 2015- Roof repairs in March 2016



Lyttelton Recreation Centre and Trinity Hall Repair
Banks Peninsula CB /Completed 18th December 2015- Official Opening 20th February 2016



Lyttelton Recreation Ground – Pavilion and Shed #2
Banks Peninsula CB / 05 February 2016



Grubb Cottage – EQ Repair and Maintenance- Heritage
Banks Peninsula CB / 2nd February 2016



North New Brighton Community Centre
Coastal- Burwood CB / 29 January 2016

Opened to Public 2015



Sumner Surf Club Toilets Rebuild
Linwood-Central-Heathcote CB / 11th December 2015



Victoria Park Information Centre – EQ Repair & Strengthening- Heritage
Spreydon-Heathcote CB/ 15th December 2015



South Hagley netball toilets
Linwood-Central-Heathcote CB / 20th November 2015



Heathcote Domain Exeloo Toilet
Linwood-Central-Heathcote CB / 30th October 2015



Cashmere Valley Exeloo Toilets
Spreydon-Cashmere CB / 30th October 2015



Bexley Park Exeloo Toilet
Coastal- Burwood CB / 23rd October 2015



Linwood Resource Centre
Linwood-Central-Heathcote CB / 20th October 2015



Shirley Library EQ Repairs
Coastal- Burwood CB / 16 October 2015



Avebury Workshed & Toilets – EQ Repair and Strengthening- Heritage
Linwood-Central-Heathcote CB / 13 October 2015



Akaroa Museum – EQ Repairs, Strengthening and Re-roof - Heritage
Banks Peninsula CB / 13 October 2015



Papanui Library EQ Repairs
Papanui-Innes CB / 13 October 2015



Botanic Gardens Tea Kiosk - Strengthening & Repair Project
Linwood-Central-Heathcote CB / 02 October 2015



Le Bons Bay Exeloo Toilet
Banks Peninsula CB / 25th September 2015



Awa-iti Reserve Exeloo Toilet
Banks Peninsula CB / 20th September 2015



Dog Pound - Dog Shelter and Dwelling Portacom
Linwood-Central-Heathcote CB / 20th August 2015



Avon Park Exeloo Toilet
Linwood-Central-Heathcote CB / 17th August 2015



Duvuachelle Show Grounds Exeloo Toilet
Banks Peninsula CB / 12th August 2015



Sockburn Recreation Centre Strengthening and Repair
Halswell-Hornby-Riccarton CB / 7th August 2015



Bottle Lake Forest Information Centre
Coastal- Burwood CB / 31st July 2015



Duvauchelle Reserve and Campground - All Buildings
Banks Peninsula CB / 30th July 2015



Scarborough Beach - Jet Boat Shed
Linwood-Central-Heathcote CB / 21st July 2015



South New Brighton Park Exeloo Toilet
Coastal- Burwood CB / 10th July 2015



Middleton Park Public Toilet
Halswell-Hornby-Riccarton CB / 20th June 2015



Spreydon Library
Spreydon-Cashmere CB / 4th May 2015



Woolston Park Memorial to Fallen Soldiers and Pavilion Rebuild
Linwood-Central-Heathcote CB / Sports changing facilities- 8th June 2015, War Memorial Facility- 25th April 2015



Port Levy Pool Changing Shed
Banks Peninsula CB / 2nd April 2015



Cuthberts Green Softball Complex and Grandstand
Linwood-Central-Heathcote CB / 2nd April 2015



Withells Island Boat Sheds
Coastal- Burwood CB / 2nd April 2015



Edmonds Clock Tower – EQ Repairs & Strengthening- Heritage
Linwood-Central-Heathcote CB/ April 2015



Clare Park Pavilion and Changing sheds
Coastal- Burwood CB / 30th March 2015



Norman Kirk Pool Rebuild
Banks Peninsula CB / 12th February 2015



Hei Hei Community Centre – Repair & Strengthening
Halswell-Hornby-Riccarton CB / 28th January 2015



Cuthberts Green Pavilion EQ Repairs
Linwood-Central-Heathcote CB / 24th January 2015



Waltham Pool Rebuild
Linwood-Central-Heathcote CB / 17th January 2015



Cuthberts Green Softball Groundsmans Shed
Linwood-Central-Heathcote CB / 12th January 2015

Opened to Public 2014



Godley House – Foundation Remediation- Heritage
Banks Peninsula CB / December 2014



Scarborough Paddling Pool Rebuild
Linwood-Central-Heathcote CB / 20th December 2014



Yaldhurst Domain Toilet block strengthening
Fendalton-Waimairi-Harewood CB / November 2014



Waltham Park Pavilion Earthquake repair and Strengthening
Linwood-Central-Heathcote CB / October 2014



Avonhead Pavilion Earthquake repair and Strengthening
Fendalton-Waimairi-Harewood CB / October 2014



Victoria Clock (Jubilee) – EQ Repairs and Strengthening- Heritage
Linwood-Central-Heathcote CB / October 2014



Denton Oval - Amenities Below Grandstand
Halswell-Hornby-Riccarton CB / 22nd July 2014



Riccarton House – EQ Repairs and Strengthening- Heritage
Halswell-Hornby-Riccarton CB / May 2014



Jellie Park Recreation & Sports Centre - Main Plant Room Strengthening
Fendalton-Waimairi-Harewood CB / 31st January 2014

Opened to public before 2014



South Brighton Community Centre Transitional Facility
Coastal- Burwood CB / 8th November 2013



Linwood Community Arts Centre – EQ Repairs and Strengthening- Heritage
Linwood-Central-Heathcote CB / October 2013



Avebury House – EQ Repairs and Strengthening- Heritage
Linwood-Central-Heathcote CB / September 2013



Curators House – EQ Repairs and Strengthening- Heritage
Linwood-Central-Heathcote CB / November 2012



YHA Rolleston House – EQ Repairs and Strengthening- Heritage
Linwood-Central-Heathcote CB / November 2012



Beachcomber Restaurant – EQ Repairs - Heritage
Linwood-Central-Heathcote CB / November 2012



Cowles Stadium Earthquake repair and Strengthening
Linwood-Central-Heathcote CB / October 2012

Demolitions Completed - Community Facilities



Before



After

Cathedral Square Toilets
Linwood-Central-Heathcote CB
Demolished April 2017



Before



After

Robbie's Bar & Bistro Riccarton
Halswell-Hornby-Riccarton CB
Demolished September 2016



Before



After

QE2 sports house
Coastal- Burwood CB
Demolished March 2016



Before



After

Porritt park, the main stadium
Coastal- Burwood CB
Demolished March 2016



Before



After

Ex-Model Railway Site - Andrews Crescent
Spreydon-Cashmere CB
Demolished December - 2015



Before



After

Hagley Park North - RSA Bowling-Petanque Club
Linwood-Central-Heathcote CB
Demolished December - 2015



Before



After

Linwood Nursery
Linwood-Central-Heathcote CB
Demolished November - 2015



Before



After

Sea field park "the Lodge"
Coastal- Burwood CB
Demolished July - 2015



Before



After

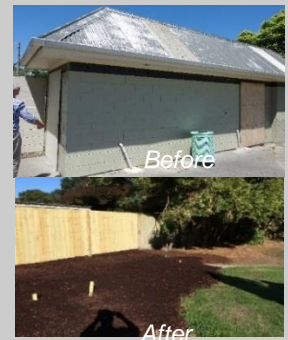
North Beach Community Crèche
Coastal- Burwood CB
Demolished July - 2015



Ferrymead reserve old toilets
Linwood-Central-Heathcote CB
Demolished June - 2015



Styx River reserve shed number two
Fendalton-Waimairi-Harewood CB
Demolished June - 2015



Cashmere Reserve Toilet
Spreydon-Cashmere CB
Demolished May - 2015



Styx River reserve living laboratory / dwelling and buildings
Fendalton-Waimairi-Harewood CB
Demolished May - 2015



Westminster park buildings x 2
Papanui-Innes CB
Demolished April - 2015



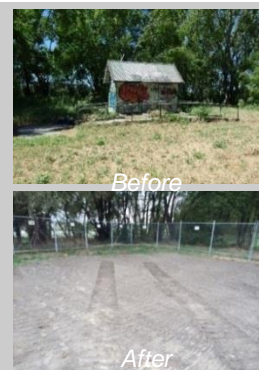
Avon park pavilion
Linwood-Central-Heathcote CB
Demolished April - 2015



Avon park toilet block
Linwood-Central-Heathcote CB
Demolished April - 2015



Birdsey Reserve Shed
Linwood-Central-Heathcote CB
Demolished March - 2015



Bexley Park Toilet block
Coastal- Burwood CB
Demolished March - 2015



Scott Park
Linwood-Central-Heathcote CB
Demolished Dec - 2014



Bromley Cemetery - Shed
Linwood-Central-Heathcote CB
Demolished Dec - 2014



South Brighton Motor Camp - Ablution block 2
Coastal CB
Demolished Dec - 2016

Active Projects- Community Facilities

Allandale Community Centre Repair

Banks Peninsula Community Board

Tranche 2

Community Facilities

Opening	4 th December 2017	Current Phase / Sub-Phase	Executing Construction
Delegated Authority for concept Approval	Banks Peninsula Community Board in partnership with the Council Asset Owner, the Allandale Reserve Management Committee and other community members.		

Description of Work

Carry out earthquake repairs and strengthening to a minimum of 67% NBS. Return the building to the Allandale Reserves Committee to manage. Committee will have a voluntary role in tidying up and landscaping the grounds.

Current Status

The repairs to the foundations are complete. All demolition work required has been completed. New weatherboards have been installed and painted. A mainly new roof has been installed and painted.

All internal work is complete with the floor varnishing underway. The electrical fit out is nearing completion and commissioning of the water supply and air conditioning works will start in the 2nd week of November.

Construction is approximately 85% complete.



Allandale Community Centre

Jellie Park Recreation and Sports Centre

Fendalton-Waimairi-Harewood Community Board

Tranche 2

Workstream Rec & Sport

Opening	Repair work will be delivered in stages over 3 years.	Current Phase /Sub-Phase	Executing Construction
Delegated Authority for concept Approval	CCC Internal staff building owner		

Description of Work

Jellie Park and Pioneer Recreation & Sport Centres have been combined into one project in order to allow for project cost and operational efficiencies. In addition, combining the two projects will enable Council to maximise the opening hours for both sites during repairs and construction.

Both Jellie and Pioneer have experienced significant earthquake damage that may begin to affect the operation and longevity of the facility if not repaired over the next 2-3 years. A scope for repairs includes earthquake repairs, energy efficiency renewals, building system renewals and accessibility improvements for the facility. A phased shutdown of these facilities is being planned in coordination with the work at Pioneer in order to minimise disruption to the levels of service, i.e. work on indoor pools is likely to be carried out while the outdoor pools are open (where possible). Details of the work and planned shutdowns will be made available once the scoping phase is complete in early 2017.

Current Status

Construction works are to start on site on 11 December 2017 in the spa, steam room and sauna areas which will be opened again in late March 2018

The works are a part of the staged construction planned for both Jellie Park and Pioneer

Communications for the staged repair works are located on:

<https://www.ccc.govt.nz/rec-and-sport/rec-and-sport-centres/recandsportrepairs/>



RFT / Main Contractor Site Visit – July 2017

Pioneer Stadium & Pools Complex - Pools, Squash, Sports Hall

Spreydon-Cashmere Community Board

Tranche 2

Rec & Sport

Opening	Repair work will be delivered in stages over 3 years.	Current Phase / Sub-Phase	Executing Construction
Delegated Authority for concept Approval	CCC Internal staff building owner		

Description of Work

Pioneer and Jellie Park Recreation & Sport Centres have been combined into one project in order to allow for project cost and operational efficiencies. In addition, combining the two projects will enable Council to maximise the opening hours for both sites during repairs and construction.

Pioneer Recreation & Sport Centre has earthquake damage throughout the building which needs to be addressed. Earthquake repairs will be combined with planned maintenance work & renewals and completed within the project. The phasing of work will be coordinated with those at Jellie Park Sport & Recreation Centre to ensure activities can be transferred to other facilities where possible. Due to the limited stock of gymnasium space in the City, Pioneer Stadium works (with the exception of urgent maintenance upgrades) will be deferred until after the opening of Metro Sports.

Current Status

Construction works are to start on site on 4 December 2017 in the Recreation Pool area with the pool area being open again in late April 2018

The works are a part of the staged construction planned for both Jellie Park and Pioneer

Communications for the staged repair works are located on:

<https://www.ccc.govt.nz/rec-and-sport/rec-and-sport-centres/recandsportrepairs/>



Entry foyer and seating area at Pioneer, areas to be widened and opened up as a part of the renovation works to the facility

Riccarton Community Centre- New Build

Halswell-Hornby-Riccarton Community Board

Tranche 1

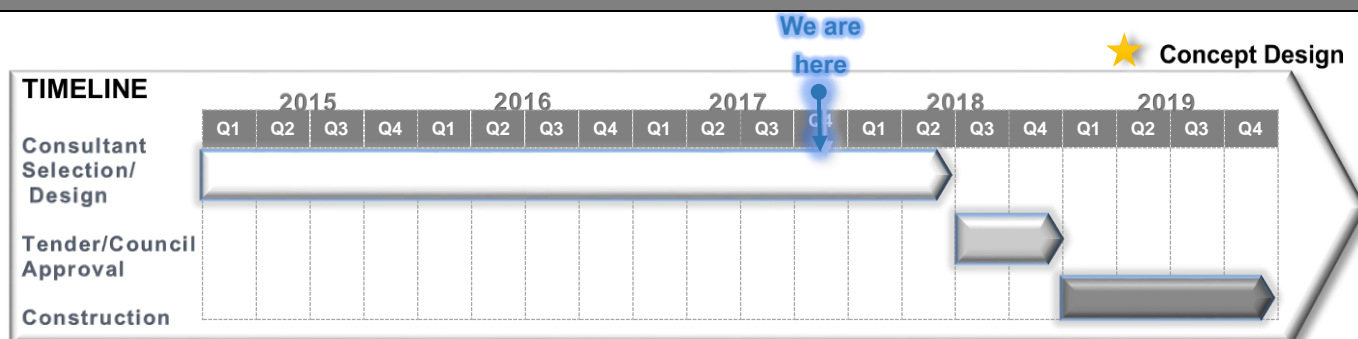
Community Facilities

Opening	Christmas 2019	Current /Sub-Phase	Planning Concept Design
Delegated Authority for concept Approval	Council		

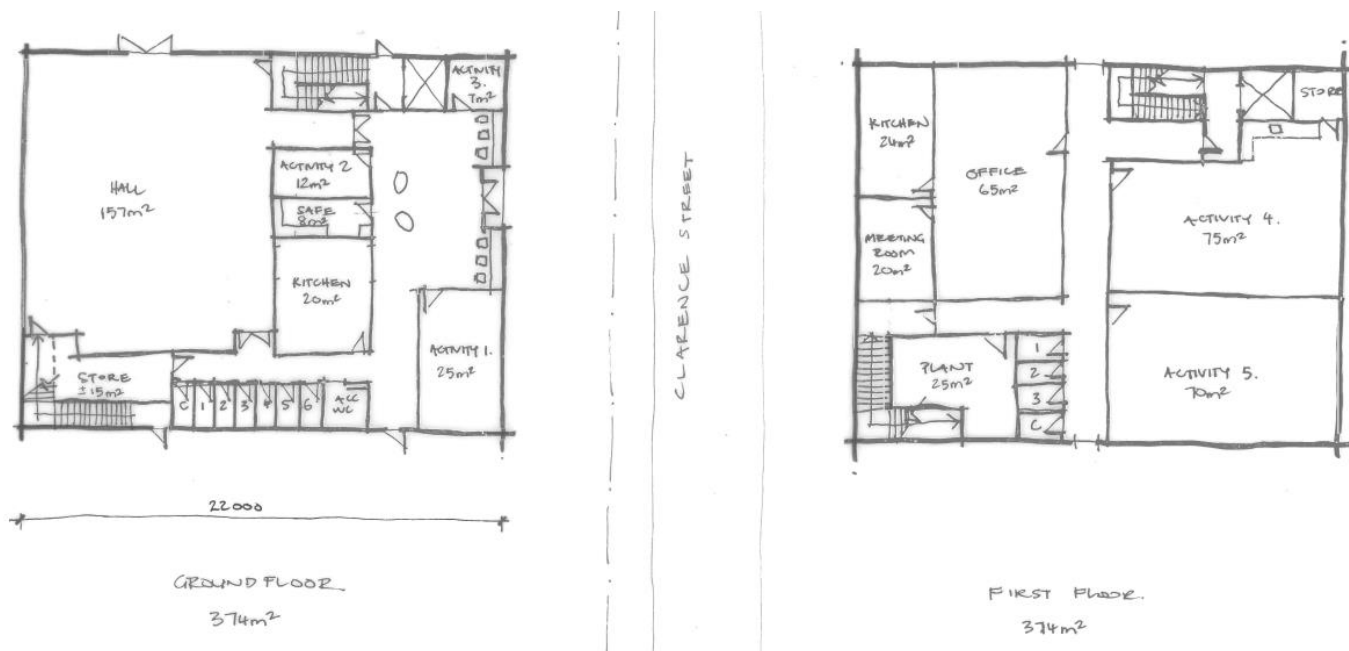
Description of Work

This project will build a new community facility to replace the Riccarton Community House. The facility will be built in the Northern portion of land owned by Council with the sale of land to the South providing the majority of project funding. A revised schematic was signed off by the Community Board in September 2017.

Current Status



The Halswell Hornby Riccarton Community Board signed off on a revised two-storey schematic design on 12 September 2017. Revised scopes and pricing have been negotiated with the project team, and a new Concept Design is being developed. A staff Stakeholder Meeting was held late October and feedback provided to support design development. At the Board meeting it was agreed that an opening by Christmas 2019 will be targeted.



Working floor plan sketch

St Albans Community Centre

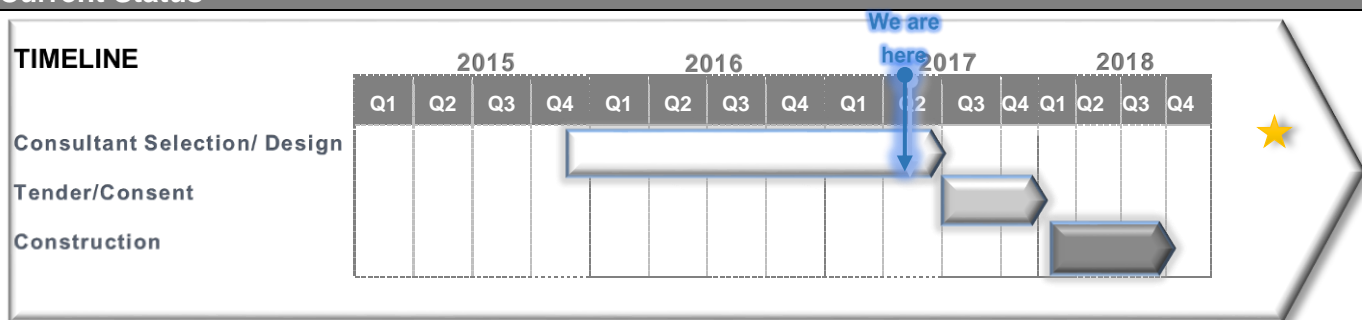
Papanui-Innes Community Board
Community Facilities

Opening	To be confirmed	Current Phase /Sub-Phase	Planning
Delegated Authority for concept Approval	Papanui-Innes Community Board		
Description of Work			

Council is redeveloping the St Albans Community Centre at 1049 Colombo Street, 122 and 126 Caledonian Road. The original building was lost during the 2010 / 2011 earthquakes. An expansion to the former building was in the planning phase in 2010 and prior to the earthquakes. A temporary facility has been located on site to provide a facility for the new community and until the construction of the new facility is scheduled.

Project funding of \$3.128M was provided through the Council LTCCP June 2015.

Current Status



A date for a Resource Consent hearing has been requested and is awaited. The outcome of that hearing and any associated follow up process will dictate the next steps for the rest of the project. The Community Board was briefed on the project on 10 November.



Artist's Impression of Caledonian Street view



Artist's Impression of Colombo Street view

St Albans Park - Pavilion/Toilets

Papanui-Innes Community Board
Workstream Parks

Opening	June 2018	Current Phase / Sub-Phase	Planning Detailed design
Delegated Authority for concept Approval	Business Owner/ Client and St Albans/ Pap-Inn Community Board		

Description of Work

St Albans Park Pavilion / Toilet is a 1 storey reinforced concrete block building which has suffered earthquake damage that makes necessary foundation releveling to repair. Repairing the building is not a viable option financially or functionally. Demolition/Re-Build has been determined the best course of action. Funding has been made available for the FY18.

Current Status

The proposed design below has been approved by the parks planner/sponsor business owner and distributed to the sports user groups and the Community Board as well as being released to the local community newspaper.

The demolition of the existing facility was completed on Friday 10th November.

A tender for the new facility will be released in November with the construction coinciding with the sports field development and predominant closure of the park.



Design.

South Brighton Camping Ground - Combined

Coastal- Burwood Community Board

Tranche 2

Rec & Sports

Opening	November 2017	Current Phase / Sub-Phase	Executing Construction
Delegated Authority for concept Approval	CCC Internal staff and Building Owner		

Description of Work

The earthquakes of 2010/2011 badly damaged the camp ground buildings and waste water lines no longer function. The most severely damage ablution block (No. 2) has been demolished (completed December 2016).

The existing damaged sanitary drainage system is being replaced with a new pressurised sanitary system resilient to future earthquake and flooding events. Council Three Waters & Waste civil engineers supervised the system design to coordinate with their long term infrastructure plans for the South Brighton and South Shore area.

Current Status

Subject to weather, road sealing and modifications to the sewer and drainage sumps are expected to be completed in November.



Road to be sealed

Spencer Park Campground - All Buildings

Coastal- Burwood Community Board

Tranche 2

Workstream Rec & Sports

Opening	Early 2018 (Stage 2 – Amenities Block)	Current Phase / Sub-Phase	Executing Construction
Delegated Authority for concept Approval	CCC Internal staff building owner		

Description of Work

Spencer Park Phase 1 was completed on 10th June 2016 and included repairs to driveways, paving, ramps and parking areas.

Spencer Park Phase 2 will deliver new amenities buildings.

- *2 Separate Buildings* – Functional – Hygienic - Private
- *Location* – Superior Location – Functional – Future Flood Defence -
- *Facilities* – Diner Including Indoor / Outdoor Cooking and Dining – Male and Female Showers / Washrooms and Toilets
- *Storage and Cleaning* – Superior Facilities and Functional
- This new modern facility will provide a significant improvement to the holiday park that will afford the end user a superior experience when visiting.

Current Status

Contractor has increased planned resources in an attempt to accelerate the programme. With these changes an opening by Christmas 2017 may be possible although will remain challenging. Blockwork on both buildings is now complete and the majority of structural steel and framing has been installed.



Diner Block



Washroom Block

Woolston Community Facility- New Build

Linwood-Central-Heathcote Community Board

Tranche 2

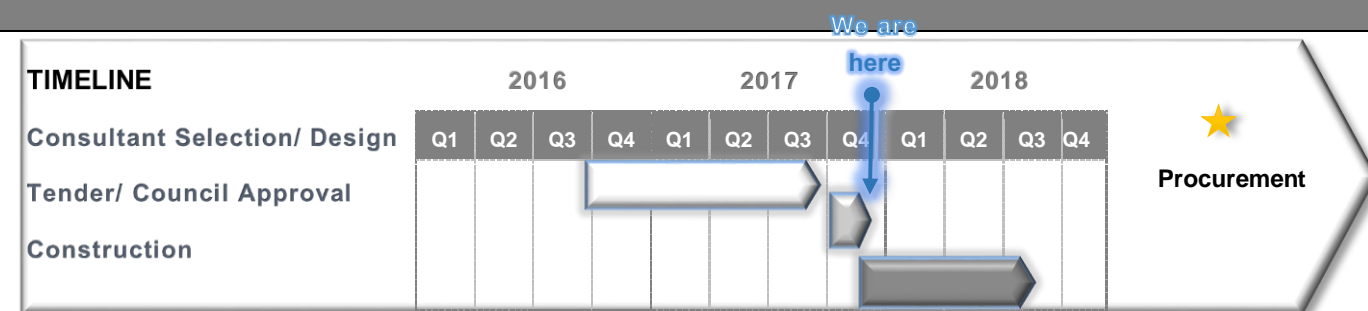
Community Facilities

Opening	Mid 2018	Current Phase / Sub-Phase	Planning / Procurement
Delegated Authority for concept Approval	Linwood-Central-Heathcote Community Board		

Description of Work

Replace the Woolston Community Library facility which was destroyed in the earthquakes – on the existing site 689 Ferry Road.

Current Status



We are still on track to be on site in November:

- The Building Consent Application has been submitted and we are waiting for feedback from the Consent team.
- The Request for Tender for the main contractor is closed and we have two preferred contractors. A decision will be made once responses are received on tender clarifications and it is expected the contract will be awarded in the week commencing 20th November.
- A sod turning ceremony will take place on Monday 27 November.
- Quotes for the redesign of the car park and adjacent laneway have been received. A transfer of Transport funds will allow this to be done simultaneously with the construction of the facility.



Artist's impression at the developed design stage

Active Projects- Heritage

Addington Water Station

Halswell-Hornby-Riccarton

Tranche 2

Heritage

Opening	2018-Q1	Current Phase / Sub-Phase	Executing Construction
Delegated Authority for concept Approval	CCC Internal staff building owner		

Description of Work

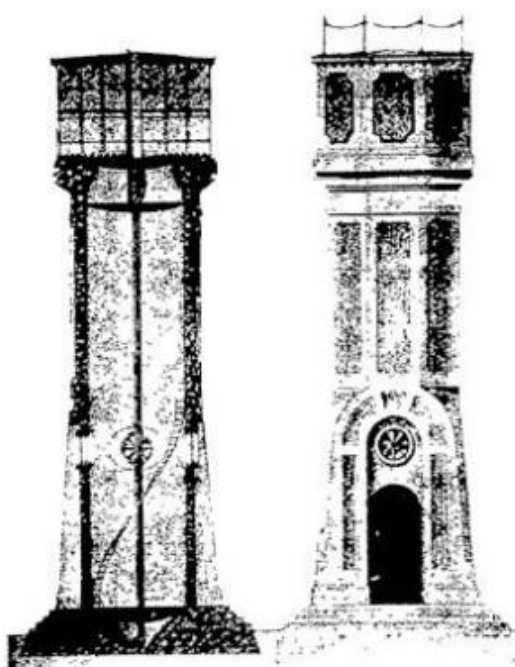
The Heritage listed Addington Water Station, (first concrete reinforced Water Tower in the World), currently has a 68%NBS and remains closed to protect against further damage to the heritage fabric.

Remediation of earthquake related cracking and displacement of the cast concrete structure is required to return this asset back to the community.

Current Status

The Building Consent Exemption and the Resource Consent have been granted. The main Contractor has been procured and has commenced on site. The building has been scaffolded after it was moss treated and washed. The tank was found to contain approximately 40m³ 15 tons of dried Bird guano. This is to be removed as it is corrosive to the heritage fabric of the tank and the additional weight would reduce the %NBS of the building by a couple of percent, (to below the 67% threshold).

The removal of the drummy plaster has been completed and crack injection is underway. Scrapings taken from the tank did not reveal the original colours and the tank is to be repainted in shades of grey and cream.



Akaroa Service Centre

Banks Peninsula

Tranche 1

Heritage

Opening	2018-Q2	Current Phase / Sub-Phase	Executing Construction
Delegated Authority for concept Approval	CCC Internal staff building owner		

Description of Work

The Akaroa Service Centre currently has a 100%NBS but remains closed. This is as a result of earthquake damage and a desire to undertake alterations. Proposed works involve a new layout to the ground floor, upgrading data and heating, re-opening the balcony on the north east corner of the first floor and any upgrades necessary to comply with the building code including the installation of a new accessible toilet and ramp.

Current Status

Stage 1 - Exterior. All works have been completed. Painting defects are occurring on the building. Investigations have been undertaken by the contractor and paint manufacturer to develop a solution. Multiple repair methodologies are being trialed on some sections of the building to determine the best solution. Results will not be known until Summer. The defect remediation works are being priced.



Stage 2 – Internal Fit-out. Detailed design has been completed. The Akaroa Design and Appearance Committee have approved the design. The Resource Consent and Building Consent has been approved.

The contractor has commenced on site as at the 28th of August 2017. The interior fit out works are progressing with the strip out and internal partition framing works completed. Interior decorating is now underway.

Revised Drawing - R1
3/11/2015

Community Centre – Cracroft (Old Stone House)

Spreydon-Cashmere

Tranche 1

Heritage

Opening	2017-December	Current Phase / Sub-Phase	Executing Construction
Delegated Authority for concept Approval	CCC Internal staff building owner		

Description of Work

The Old Stone House currently has a 15%NBS and is closed.

This asset has been approved for repair and strengthening to 67%NBS. The works will involve reinstatement of the mezzanine connections, new diaphragm wall and roof connections, lateral wall support works, deconstruction and reconstruction of the chimneys as stone veneers around steel frames, the replacement of the stone lintels and the sealing of the concrete walls and foundations with pressure injected epoxy.

Current Status

EQ repair and strengthening work commenced in August 2016.

Progress to date is as follows: The strengthening work has now been completed and all the finishing both to the interior and exterior has also been completed. The services work to the lighting, emergency lighting and HVAC has been finished and it has been tested and commissioned.

We are awaiting the compliance documents for the emergency lighting, fire protection system and for the engineering before applying for a final building inspection. Practical completion is set for the 16th November.



Deteriorated Stone Work to end Gable Walls



Steel Diaphragm to Roof after installation

Edmonds Poplar Crescent Pavilion

Linwood-Central-Heathcote Community Board

Tranche 2

Heritage

Opening	2018-Q1	Current Phase / Sub-Phase	Executing Construction
Delegated Authority for concept Approval	CCC Internal staff building owner		

Description of Work

Edmonds Poplar Crescent Pavilion currently has a 19% NBS and will be strengthened to 67%.

The works will predominantly focus around the foundation, entrance steps and at window sill level as these are areas of critical weakness to this structure.

Current Status

The tender has been completed and contract awarded. The pre-start meeting has been held on site with the main contract, archaeologist, engineer and heritage architect. Works have commenced and items from the Edmonds Band Rotunda which have been stored on site since the earthquakes are currently being removed to storage.



Langlois-Eteveneaux Cottage (LE Cottage)

Banks Peninsula

Tranche 2

Heritage

Opening	2018-Q1	Current Phase / Sub-Phase	Executing Construction
Delegated Authority for concept Approval	CCC Internal staff building owner		

Description of Work

LE Cottage currently has a 51%NBS and is closed due to construction.

Landscaping works, enclosing rear building viewing windows, make safe chimney, repaint interior and exterior of building.

Current Status

Resource and Building Consent has been granted and the archaeological authority has been approved. Works were placed on hold when unexpected fabrics were uncovered.

A revised scope has been agreed due to the above discovery. An amended Building and Resource Consent has been approved and the archaeological authority application has been approved. The contractor has begun on-site, they have installed all protection requirements, enclosed the rear windows, and removed all of the gypsum linings. Excavation works are to commence next week.



Nurses Memorial Chapel

Linwood-Central-Heathcote Community Board

Tranche 2

Heritage

Opening	2018-August	Current Phase / Sub-Phase	Executing Construction
Delegated Authority for concept Approval	CCC Internal staff building owner		

Description of Work

Undertake EQ damage repairs and strengthen the building within the range of 50 to 67% NBS. This strengthening scheme is based around the need to conserve the interior features and fabric.

Current Status

The work has been approved and will be undertaken using a Heritage Works Plan rather than a Resource Consent. A Building Consent has been approved and issued for the works.

Deconstruction of the interior has been completed. The installation of the new concrete slab to the basement has been completed, the next stage is to start the install of the block walls in this area. Asbestos has been found within the basement and this is currently being removed by a specialist company. Rescheduling of the programme and works, to stay on programme due to the Asbestos, has been agreed and another entrance has been installed within the Chapel. Next stage is for the waterproofing of the underside of the slab and deconstruction of the Vestry arch and walls.



Reinforcing to the basement slab and the pouring of the slab has now been completed.



Containment tent at the front of the Chapel for the removal of the Asbestos.



Risingholme Community Centre & Homestead

Linwood-Central-Heathcote Community Board

Tranche 1

Heritage

Opening	2019-Q1	Current Phase / Sub-Phase	Executing Procurement
Delegated Authority for concept Approval	CCC Internal staff building owner		

Description of Work

Works to remediate the asset include the removal of all lathe and plaster ceilings as well as designated lathe and plaster walls, reconstruction of the chimneys as brick veneers around steel frames, the installation of roof and wall diaphragms, introduction of ceiling diaphragms on both the ground & first floor and the repair of the remaining lathe & plaster walls. Foundation works may also be required.

Current Status

On the evening of the 6th June 2016 a fire started on the premises which has caused substantial damage to the first floor and roof areas. An initial damage assessment has been completed by the project engineers and architect to assess the damage caused. This report has now been completed and the redesign undertaken. All documentation is now in for a RC and BC and we are waiting approval for these items.

Tenders for the main contract have now closed and the tender evaluation process and review of the prices has been completed and presented to CCC for the final approval before appointing the contractor. Once this has been confirmed, contracts will be agreed and signed and the main contractor will establish on site.



First floor fire damage underneath the scaffolding structure and wrap.

Rose Historic Chapel
Linwood-Central-Heathcote Community Board
Tranche 1
Heritage

Opening	2018-Q1	Current Phase / Sub-Phase	Executing Construction
Delegated Authority for concept Approval	CCC Internal staff building owner		

Description of Work

The Rose Historic Chapel currently has a 10%NBS and is closed.

Works to remediate the asset include strengthening of the walls and inner ties, improvement of the foundations and tying of the roof structure.

Current Status

Construction commenced in June 2016

All new structural work to the Chapel has been completed and this has been signed off by the engineer. The cladding of the exterior stone work to the front of the Chapel has also been completed including the Limestone Rose window. The new slate roof to the entrance is installed. To the rear or Sanctuary end the stone work is approximately 90% complete. Slate roofing to the Nave is 90% complete. The installation of the stain glass windows has commenced with the completion of the installation to the Rose Window. This is now being protected with Perspex until the completion of works.

The next stages are to complete the interior, plastering of the walls, this has been delayed due to the moisture content of the internal brick walls and we are currently drying out the interior with de-humidifiers and industrial fans. The repairs to the Vestry sarking and all the new Rimu sarking to the mezzanine is completed stained and varnished. The spiral staircase is installed, we are currently working on the top balustrade before it is all painted. The first fix for the services has been completed and once the plastering has been completed the painters will start on the interior. The floor tiles will be completed at the end of the painting.



External – Scaffold removed







Stained glass window works

Future Projects or on hold – Community Facilities and Heritage

Asset Name	Status	Community Board	Target Start Date
Parklands Library- Community Facilities Completed Stage 1 Repair underground Pipes and Stage 2 Landscaping. Stage 3: Earthquake repairs are scheduled to start on 1 st July 2018 due to the need to fit this work in with the whole Christchurch City Libraries Programme. Consequently, the project will not be reported upon further until the project recommences in 2018.	Future	Coastal- Burwood	1 July 2018
Shirley Community Centre- Community Facilities The capital budget for this project was deferred as part of the FY17 Annual Planning process. Consequently, the project will not be reported upon further until the funding becomes available.	Future	Papanui-Innes	1 July 2020
Cracroft Caverns Reserve - Cashmere Caverns- Community Facilities The capital budget for this project was deferred as part of the FY17 Annual Planning process. Consequently, the project will not be reported upon further until the funding becomes available.	Future	Spreydon-Cashmere	1 July 2020
St Albans Crèche- Community Facilities Project is on hold until an alternative location can be found for the crèche to operate while the works are undertaken.	On Hold	Papanui-Innes	TBC
Centennial Hall - Spreydon Community Centre- Community Facilities On hold while client completes building review and determines future use requirements.	On Hold	Spreydon-Cashmere	TBC
Opawa Public Library Earthquake Repairs- Community Facilities From a meeting held on 9 th November, agreement that: <ol style="list-style-type: none"> The Library representatives understood and accepted that because the most recent estimated cost of rebuilding the old library is significantly greater than the available budget it is uneconomic to rebuild it. Staff advised that options are currently being explored for a cost effective approach to providing a new facility to house the library, and the Children's Library, on the existing site that is within the available budget. As far as is practicable, heritage elements and features from the old building will be included/incorporated into the new build More information about the options that are being explored will be available in early December. 	On Hold	Linwood-Central-Heathcote	TBC
Former Council Stables – Donald St- Heritage Awaiting Asset Owner direction	On Hold	Banks Peninsula	TBC
Kukupu Hostel - Heritage CCC are currently looking into the future use of the building as this will determine the design process for the repair and strengthening of the property. This asset is currently on hold awaiting a decision on future use. Consequently, the project will not be reported upon further until taken off hold.	On Hold	Banks Peninsula	TBC
Little River (Coronation) Library- Heritage The area traditionally suffers from flooding and as this building is affected, we are currently looking at potential solutions for this facility alone. A report has been completed and issued to Council for review and comment. The flooding report has several different options for the protection of the property and this is currently being expanded and initial budget estimate figures completed for further review. Consequently, the project will not be reported upon further until the project recommences.	On Hold	Banks Peninsula	TBC
Kapuatohe Dwelling- Heritage This project has been re-phased, as part of the Annual Plan, meaning funding will be available 19 / 20. Consequently, the project will not be reported upon further until the project recommences.	Future	Fendalton-Waimairi-Harewood	2018-2019
Thomas Edmond Band Rotunda - Heritage This project has been re-phased, as part of the Annual Plan, meaning funding will be available 18/19. Consequently, the project will not be reported upon further until the project recommences	Future	Linwood-Central-Heathcote	2018-2019

Risingholme Hall – Heritage Council approved on 5 October 2017 - Asset repair be put on hold until future use is determined	On Hold	Linwood-Central-Heathcote	TBC
Chokebore Lodge – Heritage Council approved on 5 October 2017 - Asset repair be put on hold until future use is determined	On Hold	Halswell-Hornby-Riccarton	TBC
Mona Vale Bathhouse – Heritage Council approved on 5 October 2017 - Asset repair be put on hold until future use is determined	On Hold	Halswell-Hornby-Riccarton CB	TBC
Penfolds Cob Cottage – Heritage Council approved on 5 October 2017 - Asset repair be put on hold until future use is determined	On Hold	Linwood-Central-Heathcote CB	TBC
Signal Box, Norwich Quay – Heritage Awaiting Asset Owner direction	On Hold	Banks Peninsula	TBC

Assets from Tranche 2 requiring no further action or awaiting long term decision- Community Facilities

Milton St Depot - #3 Shed-demolition Linwood-Central-Heathcote CB		Asset Owner does not wish to proceed with any demolition work while they consider the future use of this site.
Linwood Library Linwood-Central-Heathcote CB		The Linwood Library is currently operating out of Eastgate Mall. Services for the area previously occupied by Linwood Library are to be reviewed. Funding will be held in future year budgets until such time as this work has been completed.
Pages Road Depot - Buildings Linwood-Central-Heathcote CB		Project has been cancelled as it has been discovered that the property is owned by Water and Waste who no longer have a need for it. Presently used for the storage of Heritage items which will define when the facility will be demolished.
Cathedral Square Toilets Linwood-Central-Heathcote CB		This budget is being held in future years for the following reasons: There is too much uncertainty around what the Cathedral Square Anchor Project will be and where/how many public toilets will be required. The current temporary toilets in the square are rented and the lease has recently been re-negotiated until the end of November 2016

Community Facilities Milestone Progress report for all Community Boards (exclude Heritage)

Community Facilities- Milestone Progress November 2017			
From Aug-16 to Oct-17		▼ Sep-17 Total to date	
[-] Project Brief Validated (IT Initiate Complete) ★			5
[+] Concept Design Complete ★			9
[-] Detailed Design Completed ★	1		9
Woolston Community Facility			
[-] Building Consent Addressed ★	1		5
Woolston Community Facility			
			1
[-] Resource Consent Addressed ★	1		6
Woolston Community Facility			
			1
[-] Tendering ★	1		8
Woolston Community Facility			
			1
[+] Possession of Site - Main Building Contractor ★			5
[+] Construction Completed ★			15
[+] Open to Public ★			11
Total to date	4		73