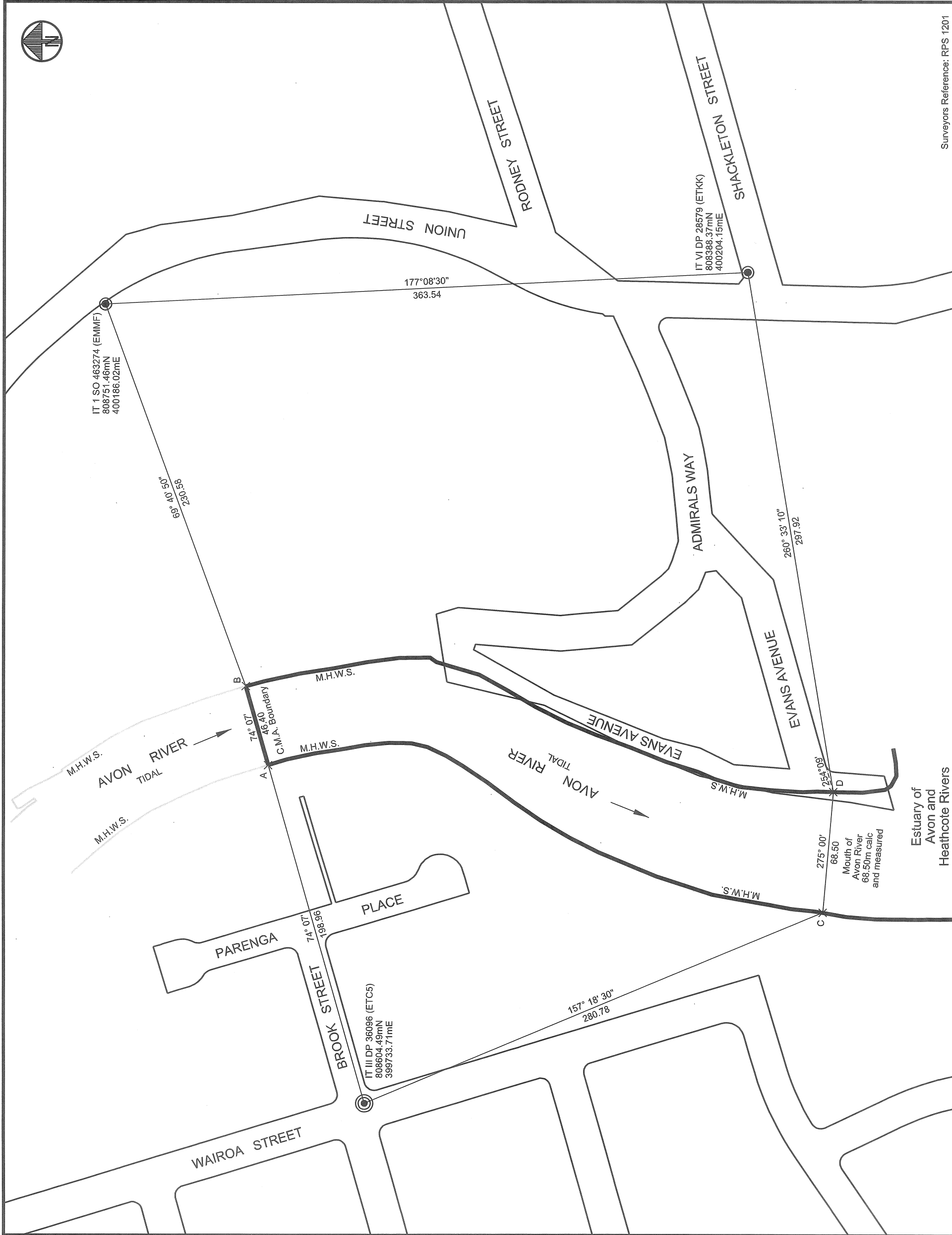




The boundary of the COASTAL MARINE AREA where it crosses the Avon River is on the production of a line of 74° 07' from IT III DP 36096 (ETC5) through MHWS on the west bank to MHWS on the east bank (line A - B).

The MOUTH of the Avon River (line C - D) is between the mark of MHWS on each side of the Avon River, and on a line between a point at a bearing of 157 degrees 18 minutes and 30 seconds and a distance of 280.78 meters from IT III DP 36096 (ETC5), to 'C' on the west bank, to a point 'D' at a bearing of 260 degrees 33 minutes and 10 seconds and a distance 297.92 meters from IT VI DP 28579 (ETKK) on the east bank. This east bank point 'D' is on the extension of the southern roadside boundary (at 254° 09') from the elbow in Evans Avenue (northern boundaries of Lots 4-8 DP 6046). MHWS is generally edge of vegetation on gabion netting.

NOTE:
Mark of MHWS plotted from GPS observations on 17 April 2015.
Points A, B, C, D have not been ground-marked.



I, Philip Lloyd Wood

being a licensed cadastral surveyor, certify that:
(a) this dataset provided by me and its related survey are accurate, correct and in accordance with the Cadastral Survey Act 2002 and the Rules for Cadastral Survey 2010, and
(b) the survey was undertaken by me or under my personal direction.

Signature *PL Wood* Date 13/5/2015

File Received Instructions

RPS1201-01

TERRITORIAL AUTHORITY Christchurch City

Surveyed by P.L. Wood

Scale 1:1500 @ A3 Date April 2015

Surveyors Reference: RPS 1201

Definition of limit of Coastal Marine Area in Avon River

LAND DISTRICT Canterbury