

## Transitional Project

Seven transitional works have been installed on Lyttelton's civic square site as part of a separate, but related Council-funded project. The Transitional Project has provided an opportunity for local artists and craftspeople to propose, create and trial possible future design elements.

Depending on community feedback, it may be possible to incorporate some of the pieces of recently installed transitional art in the final scheme of the civic square.

The seven transitional works are:



1. An artwork that visually represents, using the nautical flag alphabet, a poem about post-earthquake Lyttelton. This is a computer-generated image.



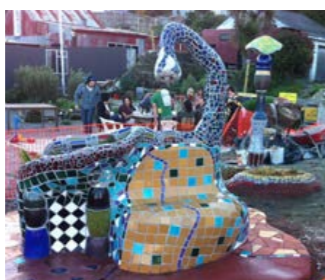
2. A Hunderwasser-style multipurpose stall.



3. A mandala artwork of ceramic tiles in the shape of 'Lyttel' people.



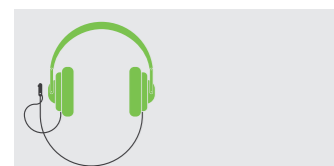
4. An oversized lounge suite.



6. A two-sided mosaic seat which includes a lamppost and a permaculture-style community herb garden.



7. Lava flow steps - the concept.



5. A listening post of recordings of the local environment, past and present. This is embedded in the wooden furniture.

Tell us in the feedback form if you think any of these works should be incorporated in the final draft concept plan for the civic square site.

## What happens next

After consultation closes on 1 July 2013 comments will be analysed and a single concept design will be prepared for recommendation to the Community Board for approval on 22 August 2013.

All submitters in this round of consultation will receive a copy of this recommended concept and the project team responses to key issues before the Board meeting. This will allow those who wish to comment at that meeting an opportunity to seek speaking rights.

Once the project has been approved by the Community Board, and funding in the Three Year Plan has been confirmed by Council, detailed design, tendering, site preparation and construction can proceed.

**haveyoursay**  
[www.ccc.govt.nz/haveyoursay](http://www.ccc.govt.nz/haveyoursay)

**Christchurch**  
City Council

have your say

June 2013

# Finalising Lyttelton's civic square design

**Christchurch**  
City Council

## Feedback sought on draft design concepts

Two draft design concepts have been developed for Lyttelton's town or civic square at the corner of London and Canterbury Streets.

Christchurch City Council wants your feedback on the concept you prefer before preparing and recommending a single concept plan to the Lyttelton/Mt Herbert Community Board for its approval. A report is intended to go to the Community Board on 22 August 2013.

This consultation phase also seeks community views on:

1. What this space should be named.
2. Whether you think any of the transitional arts projects now on the site should be retained and incorporated in the final design concept.

The Council's project team needs to receive your responses before 5pm on Monday, 1 July 2013.

### Origin of the two draft design concepts

The concepts are the outcome of two years of community consultation, firstly during the Lyttelton Master Plan process, then more recently during this civic square project.

The community was asked about the function, look and feel of the space during two drop-in sessions and a survey in



Draft concept design for a section of Lyttelton's civic square site.

March 2013, and a community meeting in April. Early concept designs were peer reviewed by a group of local design professionals in May.

Council landscape architects have focused on designing flexible, uncluttered spaces which provide the framework for a range of temporary and permanent features and activities. The project team is currently working with individuals and organisations to identify possible elements that reflect Lyttelton's special character and history. An updated proposal will be sent to submitters before the recommended plan is considered by the Community Board.

**haveyoursay**

[www.ccc.govt.nz/haveyoursay](http://www.ccc.govt.nz/haveyoursay)

Local residents, business owners and other interested people are welcome to discuss the draft design concepts proposed for Lyttelton's civic square with staff at:

- the Lyttelton Farmers Market, London Street, on Saturday, 15 June 2013, from 10am–1pm; and
- the civic square site, corner of London and Canterbury Streets, on Tuesday, 18 June 2013, from 3pm–6pm.

Please ensure that your comments reach us by 5pm on Monday 1 July 2013

You can comment by:

- Returning the enclosed freepost form
- Visiting the Christchurch City Council's 'Have Your Say' website: [www.ccc.govt.nz/haveyoursay](http://www.ccc.govt.nz/haveyoursay)
- Contacting the Consultation Leader:

Jennie Hamilton  
Consultation Leader  
Christchurch City Council  
Phone: (03) 941 5207  
Email: [Jennie.Hamilton@ccc.govt.nz](mailto:Jennie.Hamilton@ccc.govt.nz)

## Key themes from responses

Key themes which emerged from community feedback and are included in the two draft design concepts are:

- A busy and vibrant space that also includes quieter, calm places, depending on the existing site levels.
- Connections between and beyond the site's different spaces.
- Integration of Lyttelton's geological, tangata whenua and early settler history in the design. This includes the cenotaph and sculptural historical references such as the brick barrel drain and appropriate maritime artefacts.
- An organic, flexible and inclusive approach that provides spaces and activities for everyone, including play elements for younger and older children.
- A well-integrated public toilet.
- A quirky, local flavour expressed in the design, materials, planting and other features, including public art.



The Lyttelton Cenotaph on its original site on Oxford Street outside the former Lyttelton Borough Council Chambers. Photo courtesy of the Lyttelton Museum and Liza Rossie.



Lyttelton residents and visitors soak up the sun during a Saturday Lyttelton Farmers Market.

## Specific features included as a result of community consultation so far

As a result of feedback, particularly the Council's March 2013 survey on what people wanted to see and do in Lyttelton's civic square, the following features have been included in both design options:

1. The Lyttelton Cenotaph, which originally stood in Oxford Street before it was relocated to a site on Simeon Quay. It was severely damaged by the earthquakes and will be rebuilt.
2. Public toilets which could also be an artwork.
3. Performance spaces.
4. A 160-year-old bell from St Joseph's, one of Lyttelton's main churches demolished as a result of the earthquakes. The Council has been advised that St Joseph's wishes to gift the bell to the Lyttelton community for use as a village bell.

In the Council survey, 49 percent of the 140 respondents who commented on the cenotaph wanted it integrated in the square compared to 34 percent who did not. Another 14 percent neither agreed nor disagreed and 3 percent did not know.

Sixty percent of the 138 respondents who commented on the public toilets wanted them in the civic square, 29 percent did not, 9 percent neither agreed or disagreed, and 2 percent did not know. A number of submitters suggested that the toilets could also be an artwork with a quirky Lyttelton look.

The Council has responded to a strong community call for a performance space on the site. A paved area providing shelter and a power supply is provided on the steps between the lower and middle levels. Other open areas on the lower and upper levels can also be used for various types of performance and activities.

The 160-year old bell from St Joseph's Church, and the timber beams and stone from the original belltower, are likely to be available for reconstruction on the site and have been included in the draft design concepts. During a presentation to the Community Board, local resident and parish bellringer Dave Sanders said the bell was "a bit of history to bring to the future" and it could be rung each weekday at noon.



The civic square site is already a popular meeting place for the community.

## Rationale for the two draft design concepts

The starting point for the two draft design concepts was to ensure the spaces and use of the civic square site "worked" in urban design terms. Boundaries have been kept open to encourage interaction from the streets and local businesses.

The community expressed a desire for well-designed, flexible spaces, which can be used by everyone. Both concepts follow the natural contours of the site and its wider context within the Lyttelton Harbour/ Whakaraupō Basin.

The options show differing locations for the Lyttelton Cenotaph. In Option 1 the cenotaph is at the rear of the middle level. Option 2 shows the cenotaph on the London Street/ Canterbury Street corner. In both concepts the cenotaph has been situated in such a way that it is embedded into the site, with access to all four sides.

*Both concepts show that the site has generally been divided into three areas as follows:*

- The lower level is a paved, busy space which allows movement through it, but also areas for the passerby to stop, linger and sit a while, with both permanent and flexible seating areas. Open and easy access along the road frontages is included and the corner is anchored by a structure such as the cenotaph or waharoa (main entranceway).
- The middle level is designed to be a more passive area. The grassed area will be kept as large as possible to make it a flexible space for different uses and contribute to the greenery. The tall retaining wall at the Canterbury Street boundary could be a feature art or memorial wall. The corrugated iron fence at the top of the retaining wall (on the road boundary) will be replaced with a balustrade, possibly with a feature hand rail or leaning rail. The middle level is to be separated from the lower level by terraced steps/seating which can combine as a performance area. The public toilet is to be located on the middle level to give good access and improved visibility/safety. The toilet could be integrated into the landscape or designed as an art feature.

- The top level is to be a natural looking, but playful space, with views from the top corner to be retained. Play is designed to be integrated into the fall of the land by use of slides and climbing walls, for example. The path will be made as accessible as the existing gradients allow, with the use of ramps where possible.

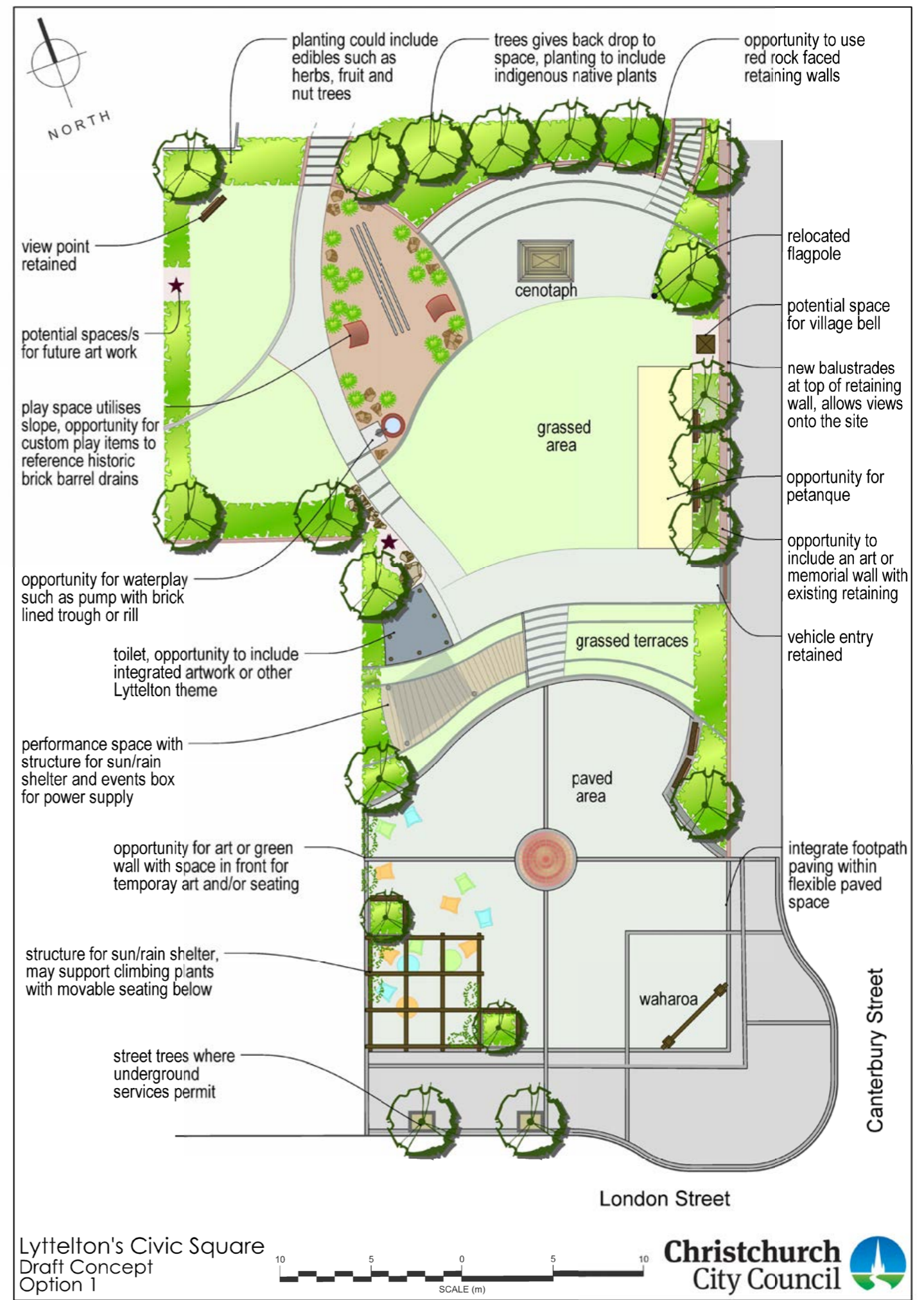
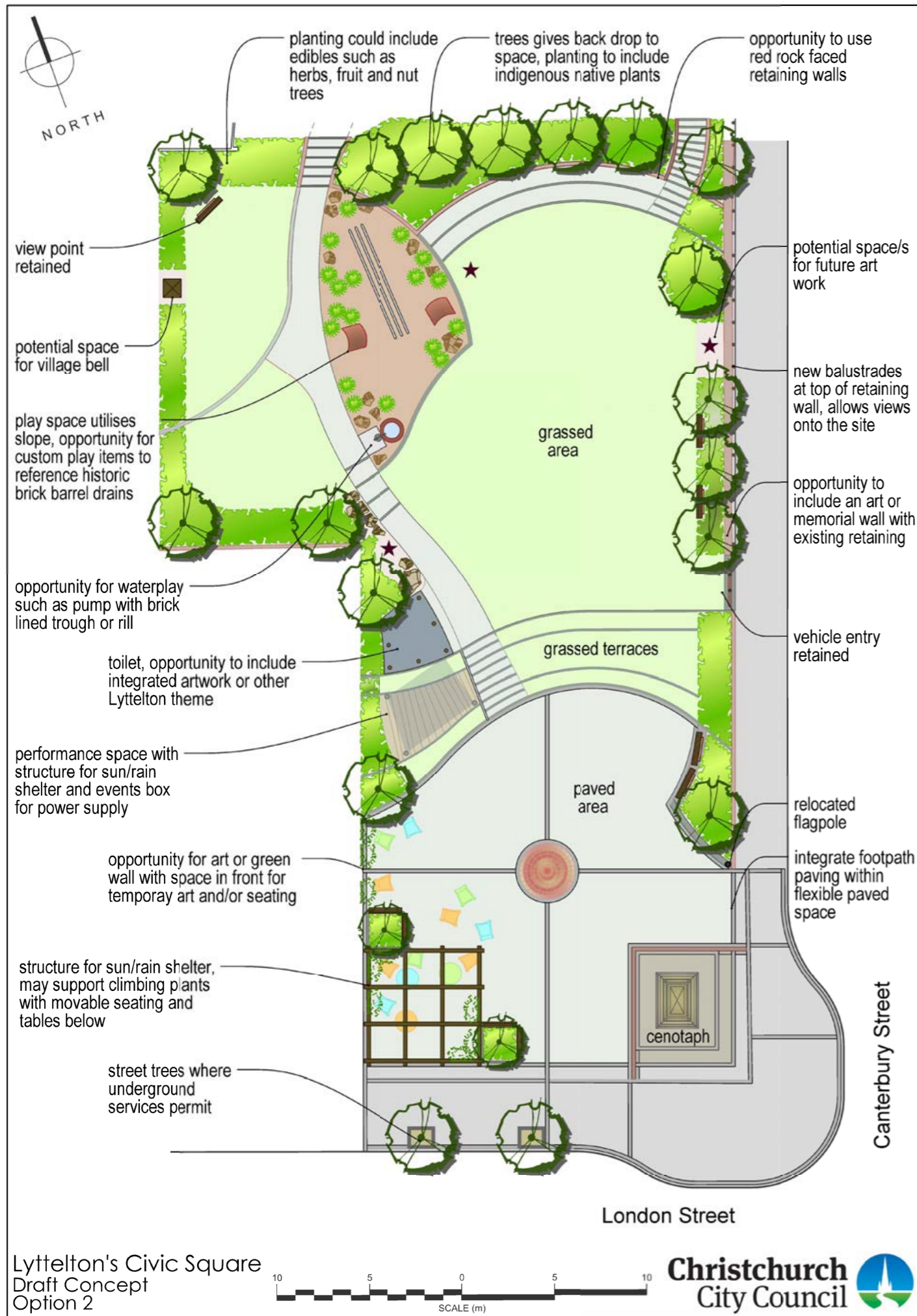
Play is to be integrated into the landscape as much as possible, making use of the change in levels, rocks and naturally found materials. Play or a water feature could also make reference to the existing historic brick barrel drain which passes diagonally under the site.

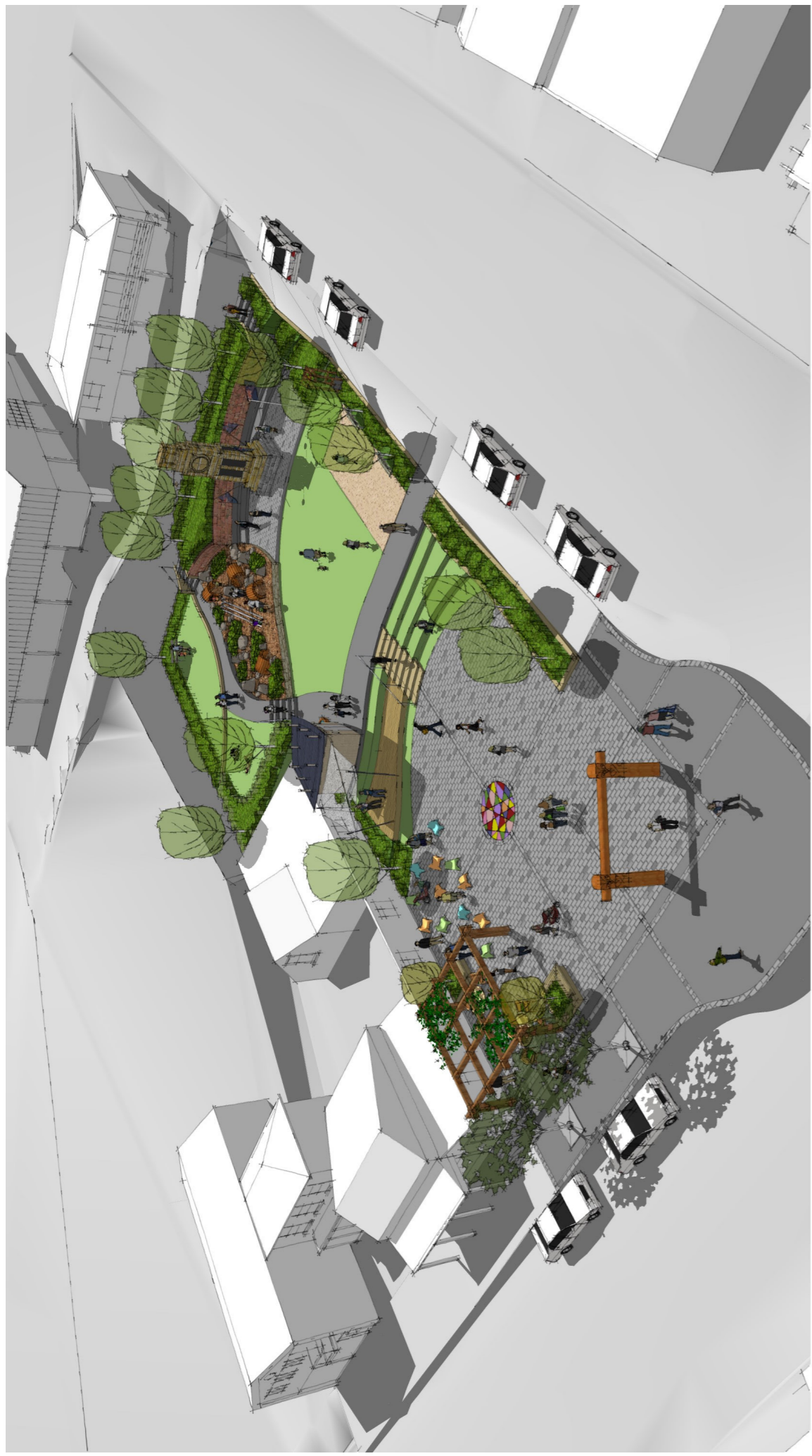
There are opportunities for integrated art works on the waharoa, play features, flags and other maritime references, toilet building, paved surface and retaining wall detail, and the incorporation of historic local found objects. There is also the possibility of retaining some of the pieces of transitional art currently on the site.

The preference for lighting is to create a hierarchy of lighting with the lower level being well lit for night time activities and pedestrian level lighting to provide safe access through the remainder of the site. Other ambient lighting could be provided to light the cenotaph or other structures, or as art lighting.

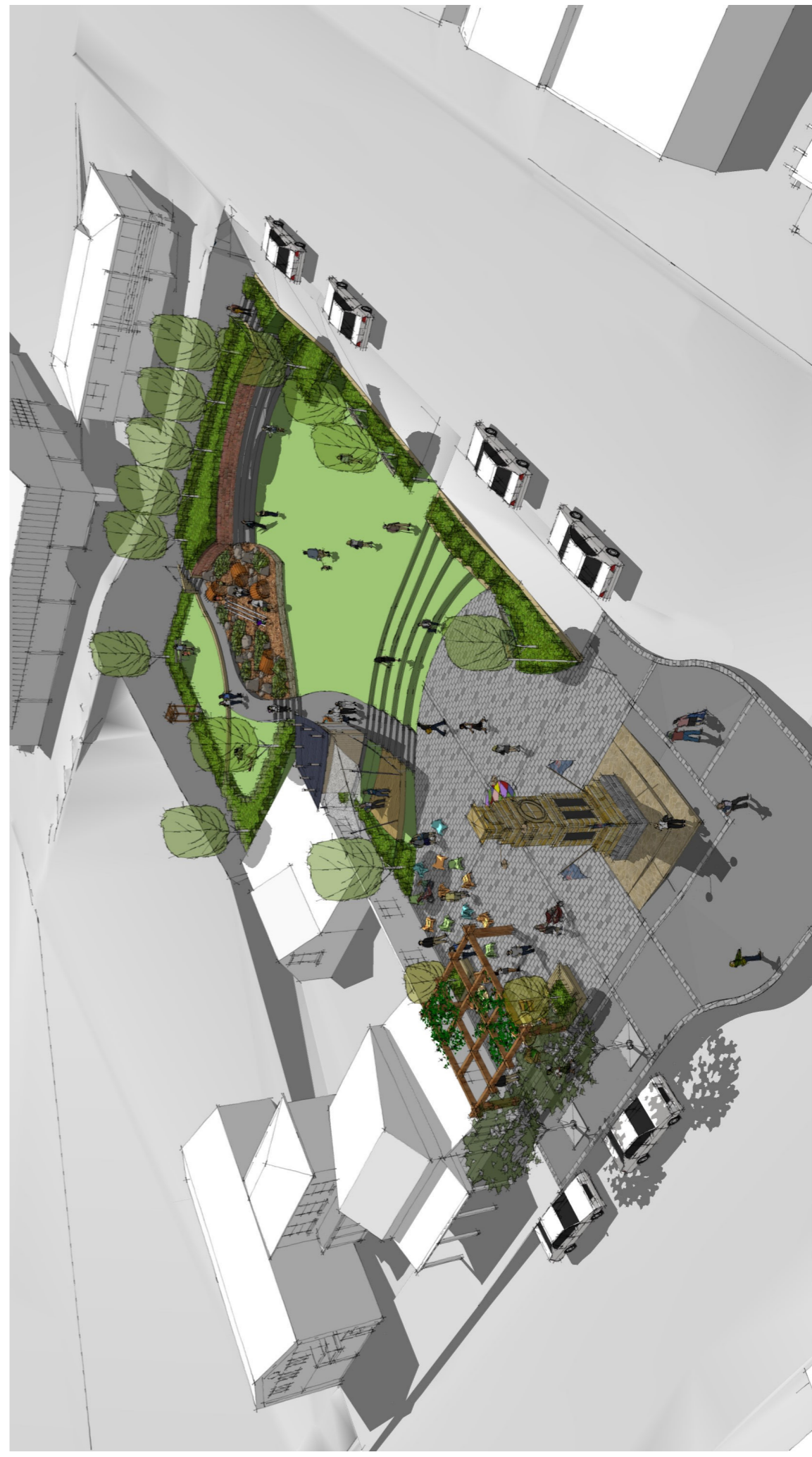
Community feedback indicated that the area's geological, tangata whenua and early settler history should be represented through design and materials. This can be partially achieved at this draft design concept stage but will evolve over time. The design will retain flexibility to allow local expression of art and culture.

Plant choice is also an opportunity to express local ecological character, biodiversity and community aspirations for the site. There will be room for herbs, flowers, fruit and nut trees if desired by the community.





Lyttelton's Civic Square  
Draft Concept  
Option 1



Lyttelton's Civic Square  
Draft Concept  
Option 2