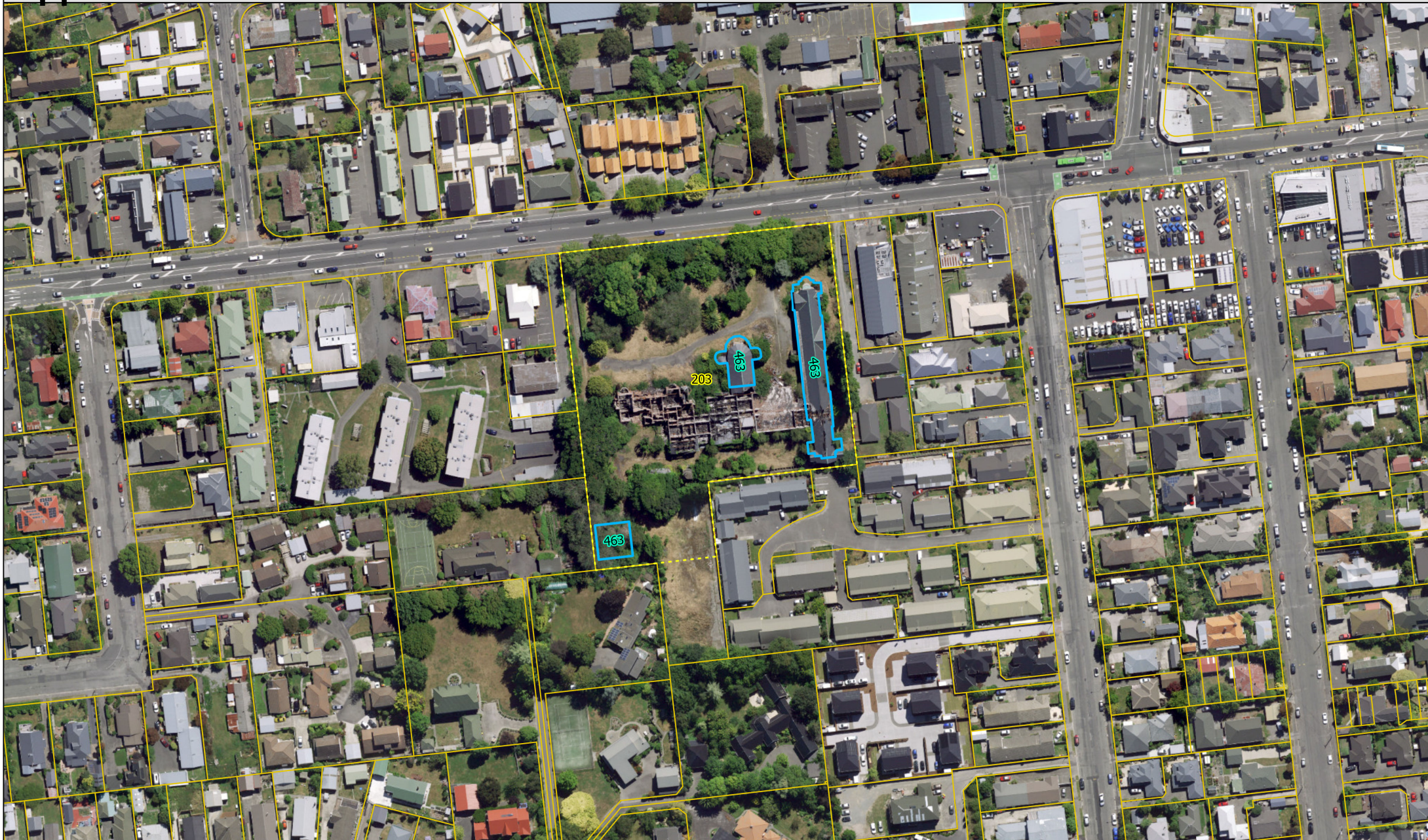


Appendix L

Submission on PC 13 Heritage Items and Settings

Aerial Map Reference: 30
Heritage Item Number: 463
Heritage Setting Number: 203



Heritage Item and Setting boundaries are a visual reference only as they have been captured against specific sets of aerial photography.

The outer boundary of the setting is deemed to follow:

a) the specific measurement(s) or description of the setting boundary shown on the aerial maps

b) the cadastral boundary at the nearest point to the setting boundary shown on the aerial maps

The boundaries should only be referred to in relation to these specific photos, not survey information or building plans.

There may be a visual distortion due to the angle of the aerial photography.

District Plan rules do not apply for overlays extending into the Coastal Marine Area. The Coastal Marine Area is as defined in the Resource Management Act.

Proposed Heritage Item

Proposed Heritage Setting

Heritage Item PC13 Submission

Existing Heritage Item

Existing Heritage Setting

Heritage Setting PC13 Submission

N

Scale: 1:1,500

Aerial photography captured in 2023

Date: 16/05/2025