





PART ONE: THE MASTERPLAN

This Masterplan considers the Heathcote River/Ōpawaho as an important character forming element of Christchurch City. The qualities of the river corridor are unique and foster a sense of identity within residential neighbourhoods.

THE MASTERPLAN INTRODUCTION

Fed from springs near Templetons Road and also receiving wet weather flows from as far west as Pound Road, the Heathcote River/Ōpawaho meanders around the base of the Port Hills from west to south-east. The river's route and character has been determined by historical flooding of the Waimakariri River where it once met the foot of the Port Hills.

This Masterplan focuses on the section of the Heathcote River/Ōpawaho that lies between Colombo Street and Opawa Road, which is situated within public open space. As the river approaches the estuary the channel widens and saline and tidal influences start to affect the flow of the river.

The Heathcote River/Ōpawaho has many heritage, cultural, ecological and recreational attributes which contribute to community and neighbourhood appreciation of this natural asset within the city.

This document begins by outlining the historical significance of the river, its current character and condition and presents the objectives and methods by which the river may be appreciated as a Linear River Park.

The Key Goals in Part 3 of this document summarise the main policies of this Masterplan, which have been developed from the local community's aspirations for the river corridor. The City Plan and several Council strategies and policy statements outlined in the Appendix C give more detailed background to these policies.

THE MASTERPLAN PURPOSE

The Heathcote River/Ōpawaho Linear Park Masterplan has been prepared to guide the management and enhancement of the river corridor so that it becomes an increasingly beautiful and valued neighbourhood park, while preserving the many layers of natural and cultural heritage. A programme of works is appended to this Plan to be considered by the Council in its next (2009) Long Term Council Community Plan (LTCCP).¹

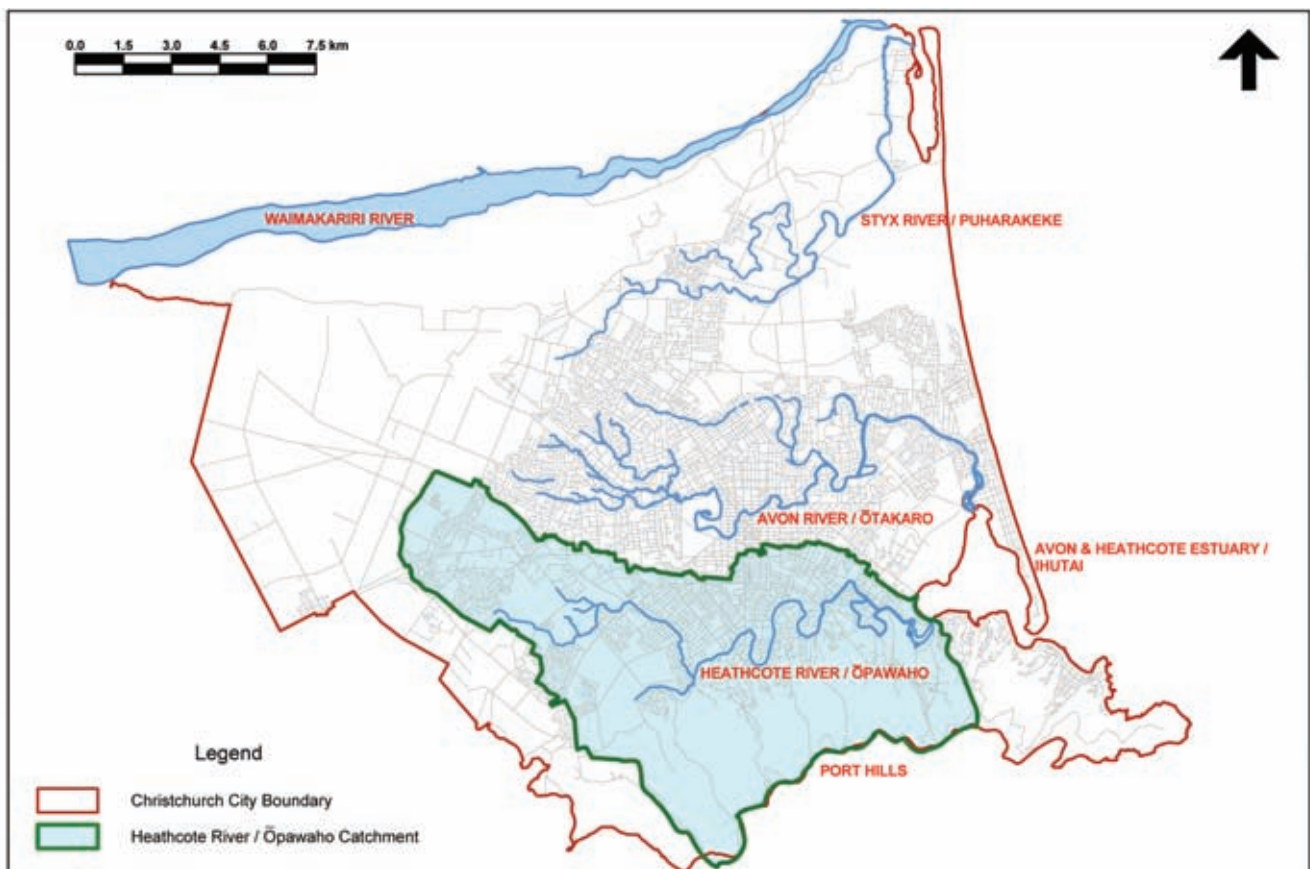
It is intended that the implementation of this Masterplan will occur in stages (refer to suggested timetable on page 89). Each stage will be taken from this plan and designed in detail. At this time the community will again be provided with an opportunity to comment on the design.

The Mid-Heathcote River/Opawaho Linear Park Masterplan was adopted by Council by resolution on the 9th April 2009.

¹ Long Term Council Community Plan: is a 20 year plan, updated every 3 years, whose purpose is to describe what activities the Council will undertake, and the cost of those activities, in order to achieve specified Community Outcomes.

THE MASTERPLAN PROJECT AREA

The project area extends from the Colombo Street Bridge to Opawa Road and includes the Heathcote River/Ōpawaho channel, its banks, and land up to the neighbouring residential boundaries which includes the local road network. This area is mapped on landscape plans in Part 4 of this document from pages 50-79.



The Heathcote River/Ōpawaho Catchment within the Christchurch City boundary.



The Heathcote River/Ōpawaho as a focus for community recreation.

VISION

To reinforce community values and neighbourhood identity by protecting, enhancing and celebrating the Heathcote River/Ōpawaho ecosystem as a focus for community recreation, education and as a healthy and attractive environment for walking and cycling through the city.