

## Glass kitchenware and home décor

We can't recycle these as the glass is different to the glass in bottles and jars. Drop them at your [EcoDrop Resource Recovery Centre](#) if they are not chipped or broken. If chipped or broken, put in your red bin.

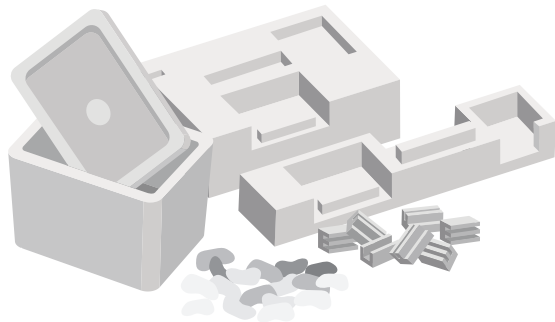


## Drink and liquid cartons

Cartons do not go in the yellow bin as they require specialised processing that we aren't set up for. See [Saveboard NZ](#) for drop-off locations.

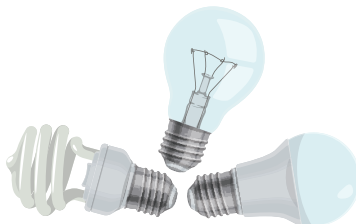
## Polystyrene

Polystyrene needs careful handling and special processing. Most [Mitre 10](#) stores accept polystyrene.



## Lightbulbs

Most [Mitre 10](#) stores collect a range of lightbulbs for specialised recycling.



## Soft plastic packaging

Soft plastics can get caught in our recycling machinery. Most [New World](#), [Pak'nSave](#), [Warehouse](#) and [Woolworths](#) stores collect clean, soft plastic items for recycling (bread bags, chip packets, lolly wrappers, courier bags, bubble wrap and frozen food bags).



## Gas bottles and canisters

Never put gas bottles or canisters in your kerbside bins. Even if empty, they are hazardous. Take to your [EcoDrop Resource Recovery Centre](#) for safe disposal.



## Eyeglasses

Take eyeglasses to [Specsavers](#) for reuse via the Lions' scheme, *Recycle for Sight*.



Download our free **Christchurch Bins** app



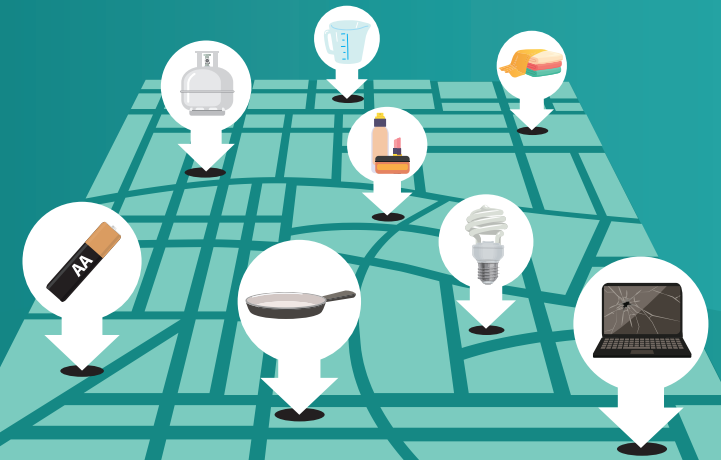
INF7645 April 2025

Items, criteria and drop off locations are listed at

[ccc.govt.nz/recyclingschemes](http://ccc.govt.nz/recyclingschemes)

# Ōtautahi Christchurch Our guide to reuse and recycling takeback schemes

This guide tells you where to take stuff for free instead of putting it in your kerbside bins.



For more info

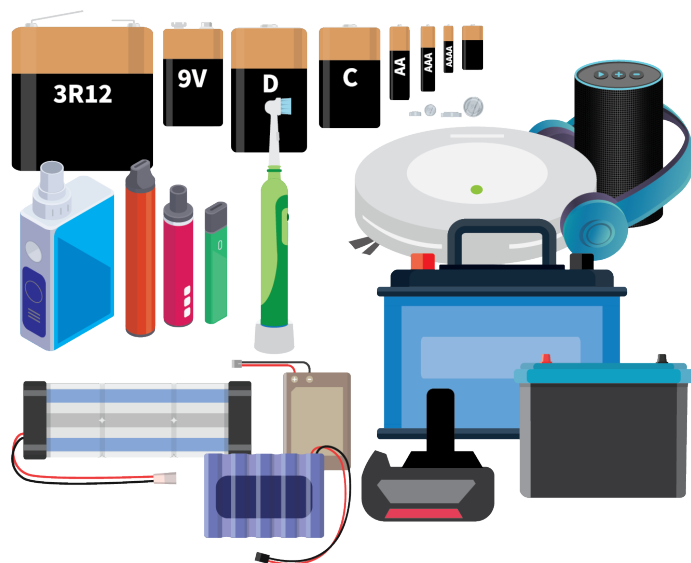
[ccc.govt.nz/recyclingschemes](http://ccc.govt.nz/recyclingschemes)

April 2025

Christchurch  
City Council 

## Batteries

Never put batteries or anything that has a battery in your kerbside bin as they can cause a fire. Drop off at your [EcoDrop Resource Recovery Centre](#), or [Bunnings](#) and [Mitre 10](#) collection points.



## Cell phones

Phones with batteries can cause fires and must not go in any kerbside bin. Old cell phones are collected at most phone stores.



## Computers and e-waste

Check the *TechCollect NZ* scheme to see what second hand items are accepted at their collection points at [Noel Leeming Moorehouse](#) or [Warehouse Stationery South City](#). You can donate used laptops to *Recycle a Device*.



## Lids

All containers must be lidless to go in the yellow bin. All of their lids, including icecream and yoghurt tubs, go in the red bin. Or, the *Caps & Lids Recycling Scheme* collect lids across Christchurch, including at several [Tea World](#) supermarkets.



## Cosmetics

Takeback scheme  
*TerraCycle* and some  
cosmetic stores collect  
empty cosmetic  
containers (mascara  
tubes and wands,  
makeup, lipsticks,  
haircare and skincare  
products).



## Plant pots

We can't recycle these as they can't be included in food-grade recycled plastics. **Bunnings** and **Mitre 10** stores collect and recycle these.



## Metal tools, home appliances, car parts and scrap

We can only recycle food and drink cans as all other metal items can cause breakdowns. Take your other metal to your [EcoDrop Resource Recovery Centre](#), scrap metal dealer or second-hand shop.



## Clothing

No fabric item can go in the yellow bin. Clothing of good, reusable quality may be accepted by second-hand shops. Items must be dry, free from rips, stains and fading.



## Fabric shopping bags

These are accepted at most second-hand shops if in a clean, reusable condition.



## Curtains

Clean and intact, curtains may be accepted by the [Community Energy Action Curtain Bank](#) to insulate homes.



## Sheets and towels

The SPCA, Dog Watch, veterinary clinics may accept these, depending on demand.

## Sports equipment

The **Gear Up Ōtautahi** programme accepts sports equipment in good condition to distribute to children so that they can participate in sports.

