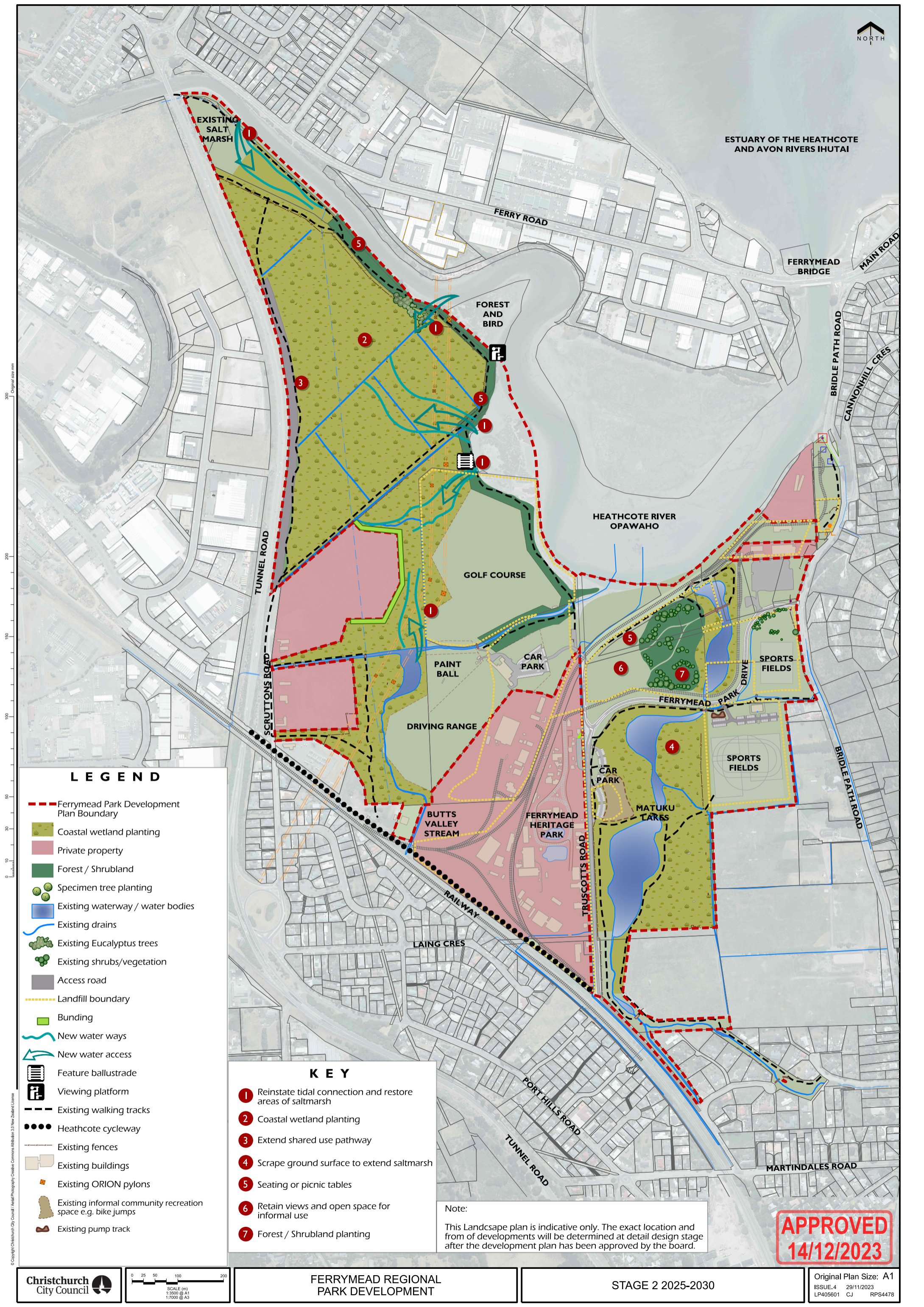




ESTUARY OF THE HEATHCOTE AND AVON RIVERS IHUTAI



LEGEND

- Ferrymead Park Development Plan Boundary
- Coastal wetland planting
- Private property
- Forest / Shrubland
- Specimen tree planting
- Existing waterway / water bodies
- Existing drains
- Existing Eucalyptus trees
- Existing shrubs/vegetation
- Access road
- Landfill boundary
- Bunding
- New water ways
- New water access
- Feature ballustrade
- Viewing platform
- Existing walking tracks
- Heathcote cycleway
- Existing fences
- Existing buildings
- Existing ORION pylons
- Existing informal community recreation space e.g. bike jumps
- Existing pump track

KEY

- Reinststate tidal connection and restore areas of saltmarsh
- Coastal wetland planting
- Extend shared use pathway
- Scrape ground surface to extend saltmarsh
- Seating or picnic tables
- Retain views and open space for informal use
- Forest / Shrubland planting

Note:
This Landscape plan is indicative only. The exact location and from of developments will be determined at detail design stage after the development plan has been approved by the board.

APPROVED
14/12/2023

© Copyright Christchurch City Council / Aerial Photography Creative Commons Attribution 3.0 New Zealand License