

Red Bus Ltd

Target Sustainability Programme

About the Company

Red Bus Ltd is a Christchurch public transport company operating urban bus services in Christchurch. Red Bus also undertakes charter trips and excursions in Christchurch.

The company occupies a significant area of land bordered by Ferry Rd, Fitzgerald Ave and Moorhouse Ave, with three main centres of operation: an office area, the bus servicing building, and a workshop.

Introduction to the Project

Red Bus joined the Christchurch City Council Target Sustainability Programme in 2008.

The Target Sustainability Programme supports business to reduce waste and to be energy and water efficient.

Red Bus's objective at the time of joining the programme was to reduce waste sent to landfill.

Red Bus implemented a range of projects to reduce their waste sent to landfill and to improve their energy efficiency.

Key Achievements

- **Reduced waste volumes by an estimated 50%, saving approximately \$10,000 per year.**
- **Increased recycling quantities by 66%.**
- **Reduced electricity consumption by an estimated 10,000kWh (2%) per year saving \$4,800 per year.**



Buses at the Red Bus Depot on Ferry Road © Copyright

Waste Reduction Initiatives

Waste sent to landfill has reduced by 390m³ per year, from an estimated 780 m³/year in 2008 to 390 m³/ year in 2009. This is a 50% reduction in waste sent to landfill. Recycling has increased by 66% with an estimated 120m³ more volume being recycled. Both estimates were provided by Red Bus staff and are based on the number of skips emptied per year and the skip size.

The amount of waste has been based on the number of skips collected as at the time of measurement the service provider didn't supply waste weights. It is recommended to measure waste by weight.

In 2008, only cardboard was separated for recycling. The following initiatives were implemented on both sites to reduce, reuse and recycle their waste:

- Removed under desk rubbish bins in the offices and replaced these with paper recycling collection units
- Installed central recycling stations in the offices and tea rooms for co-mingled recycling, general waste and paper
- Established food waste collection bins in the tearooms and began using the Christchurch City Council organic kerbside collection
- Established a recycling collection for plastic film and wrap, paper and polystyrene
- Recycle plastics, glass bottles, metal cans and other recyclables using the Christchurch City Council co-mingled recycling kerbside collection
- Locked general waste and recycling skips to avoid household waste being placed in these skips
- Ensure the new printers and copiers are set to automatically double-side
- Eliminated the printing of pay slips and leave forms by moving to an on-line system. Staff can also access this system remotely
- Provide staff newsletters on-line to reduce the amount printed



Central recycling station © Copyright



Cardboard, paper, plastic wrap and polystyrene recycling © Copyright

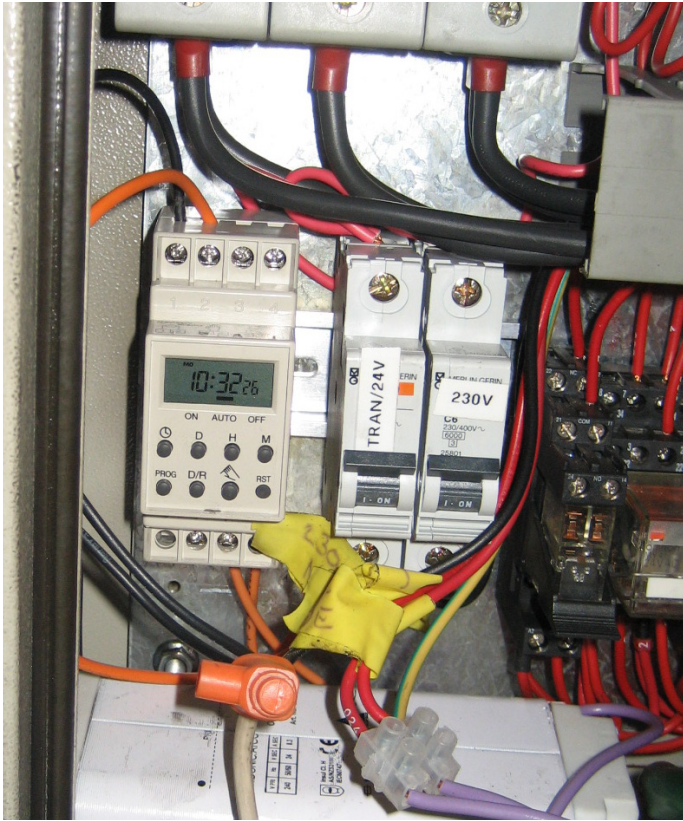
Energy Efficiency Initiatives

The main use of energy by Red Bus is the diesel used for the company's bus fleet (95%). Identifying opportunities to increase fuel efficiency and reduce the subsequent carbon footprint are high on the organisation's agenda and are a long term project.

In the mean time, Red Bus have reduced electricity use by an estimated 10,000kWh per year which equates to a 2% electricity use saving per year. This is a saving of approximately \$4,800 per year.

This has been achieved by implementing the following energy efficiency initiatives:

- Installed day light sensor controls on yard lighting which were previously controlled by a timer. The daylight sensors turn the lights on at night and off during the day
- Undertake regular maintenance checks for compressed air leaks
- Installed a timer control for the air compressor to ensure it is only operating when required
- Encourage staff to be more energy efficient using signage, posters, newsletters and emails



Timer on the air compressor © Copyright



Daylight sensors on the yard lighting © Copyright

Summary

Since joining the Target Sustainability Programme, Red Bus Ltd have implemented a range of projects that have resulted in a reduction of waste sent to landfill and an improvement in energy efficiency.

Red Bus have a commitment to reducing their carbon footprint. They will continue to look for opportunities to improve their environmental performance including:

- Undertaking an energy efficiency fleet audit

- Re-plumbing the compressed air lines i.e. running a new pipe inside the old pipe
 - Replacing the current compressor with a smaller compressor
 - Ensuring their waste and recycling collection providers supply weight data on waste sent to landfill and recycling quantities
- "Target Sustainability has been a useful initiative that integrated well with our own projects. It provided access to specialists that we would not have otherwise had."* Murray Dickinson, Chief Financial Officer, Red Bus Ltd