

## Countdown The Palms

## Target Sustainability Programme

### About the Company

Countdown The Palms is a Progressive Enterprises Ltd supermarket located within The Palms shopping complex in Shirley, Christchurch. The store sells general supermarket goods.

### Introduction to the Project

Countdown The Palms joined the Christchurch City Council Target Sustainability Programme in 2009. The Target Sustainability Programme supports businesses to reduce waste and to be energy and water efficient.

Countdown The Palms' objective at the time of joining the programme was to reduce waste sent to landfill and to become more energy and water efficient.

Countdown The Palms implemented a range of projects to reduce waste sent to landfill and to improve their energy and water efficiency

### Key Achievements

- **Reduced waste sent to landfill by an estimated 37% (67 tonnes) per year.**
- **Reduced site electricity use by an estimated 8.8% (219,100 kWh) per year, saving an estimated \$22,000 per year.**



Countdown The Palms © Copyright

### Waste Reduction Initiatives

Countdown The Palms reduced the amount of waste sent to landfill by an estimated 37% (67 tonnes) per year (based on the weight of waste sent to landfill before and after initiatives were implemented)<sup>1</sup>.

Countdown The Palms implemented the following initiatives to reduce and recycle waste:

- Ensured that the waste service provider recorded the weight of waste sent to landfill and recycling so the store could measure the improvement made through implemented initiatives.
- Implemented an organic waste collection system for butchery and deli waste. A commercial collection service provider is taking this waste to the composting facility operating in Christchurch.
- Implemented a co-mingled recycling collection system in the staff cafeteria for plastic containers, glass bottles, metal cans and newspaper.
- Implemented a paper recycling collection system for non-confidential office paper and checkout receipts. The store has installed paper recycling collection units throughout the office area and at the customer service desk in the main retail area.

- Implemented a plastic recycling collection system to recycle polystyrene, coreflute boxes and plastic strapping.
- Minimised wastage by improving its "reduce to clear" policy and practices. This was achieved by improving stock control and "reduce to clear" pricing systems.
- Improved and expanded its Food Bank collection system for food items that are not saleable (i.e. damaged packaging) but are still good for consumption.



Organics recycling bin in the butchery department © Copyright

<sup>1</sup> The calculations are based on figures supplied by the waste collection service provider and compare the period between July and December for 2009 and 2013. The organisation joined the programme in 2009 and the majority of the recycling initiatives were implemented in 2013.

# Energy Efficiency Initiatives

Countdown The Palms reduced its electricity use by an estimated 8.8% (219,100 kWh) per year<sup>2</sup>, saving an estimated \$22,000 per year.

Countdown The Palms implemented the following initiatives to increase energy efficiency:

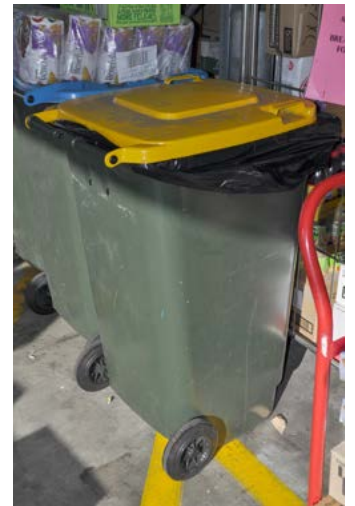
- Reduced its electricity use for lighting by an estimated 7.8% (38,900 kWh), saving an estimated \$4,000 per year.

The electricity savings were determined by comparing lighting configuration before and after a lighting refurbishment and calculating the difference in installed lighting capacity.

During the refurbishment the store replaced all its metal halide bulbs with more energy efficient 36W tubular fluorescent bulbs and reduced the number of 58W fluorescent tubes.

- The remaining electricity use saving of 180,200 kWh is due to a complete HVAC and refrigeration control system re-commission after the earthquake-related store refurbishment.

<sup>2</sup> These figures are based on comparison of data in 2010 and 2012 which is before and after the energy efficiency initiatives were implemented.



Co-mingled recycling bin  
© Copyright



New energy efficient lighting configuration © Copyright



Organics recycling bin in the deli department © Copyright

## Summary

Since joining the Target Sustainability Programme, Countdown The Palms implemented a range of projects that have resulted in a significant reduction in waste sent to landfill and an improvement in energy efficiency.

*“Target Sustainability helped Countdown The Palms to identify resource efficiency opportunities and implement initiatives that resulted in a significant reduction in energy use, waste and costs.”* Leon Jarden, Countdown CODB Manager.

Countdown The Palms plans to continue to look for ways to reduce and recycle their waste and to implement further energy efficiency projects.

Want more information?

Visit [www.target sustainability.co.nz](http://www.target sustainability.co.nz)