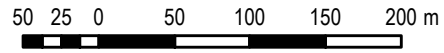




1:5,000 @A3

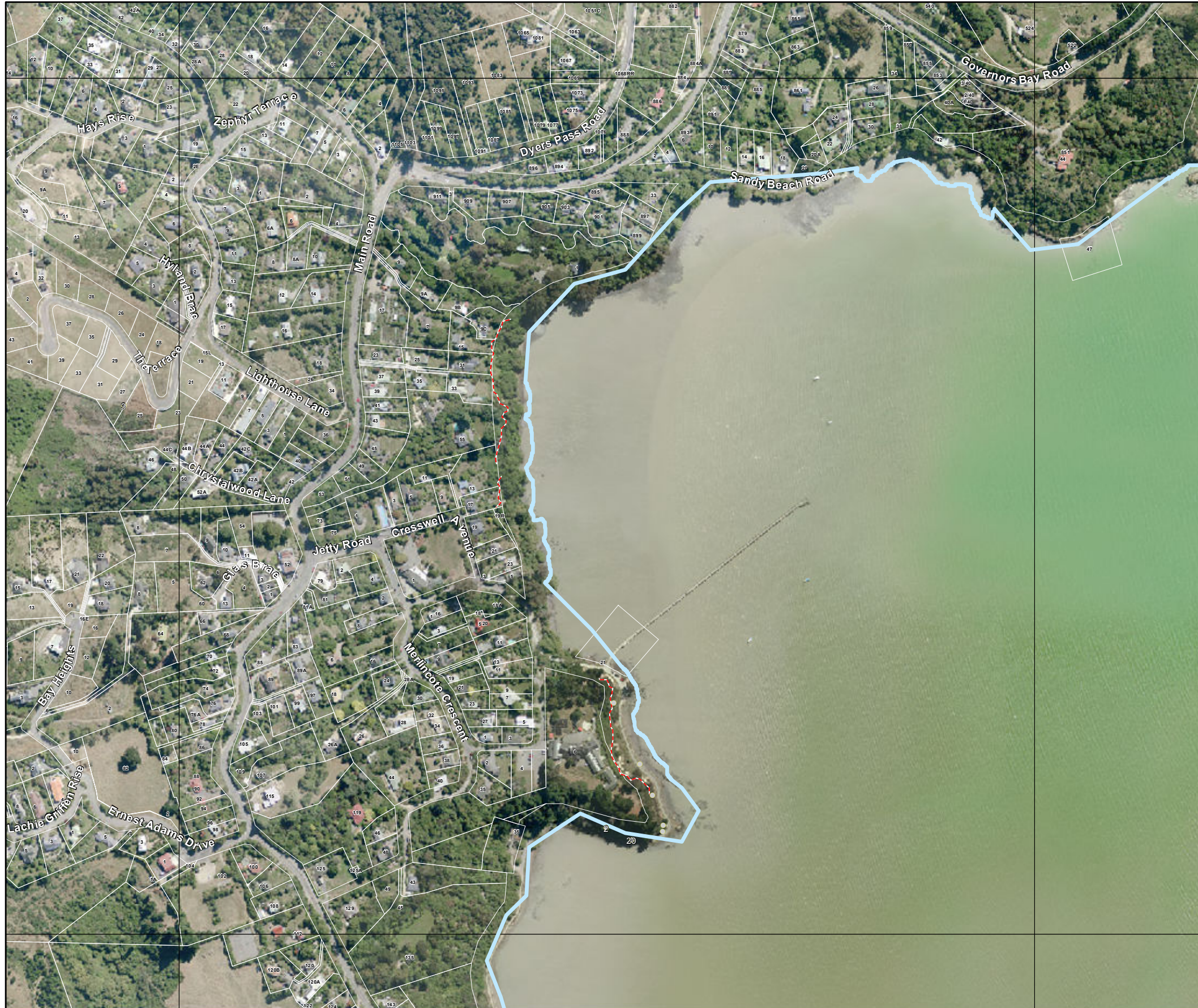


PHGG: Location of Fallen and Insitu Boulders and Bluffs

Projection: New Zealand Transverse Mercator
Datum: Geodetic Datum of New Zealand 2000
Map Produced: 14/05/2013

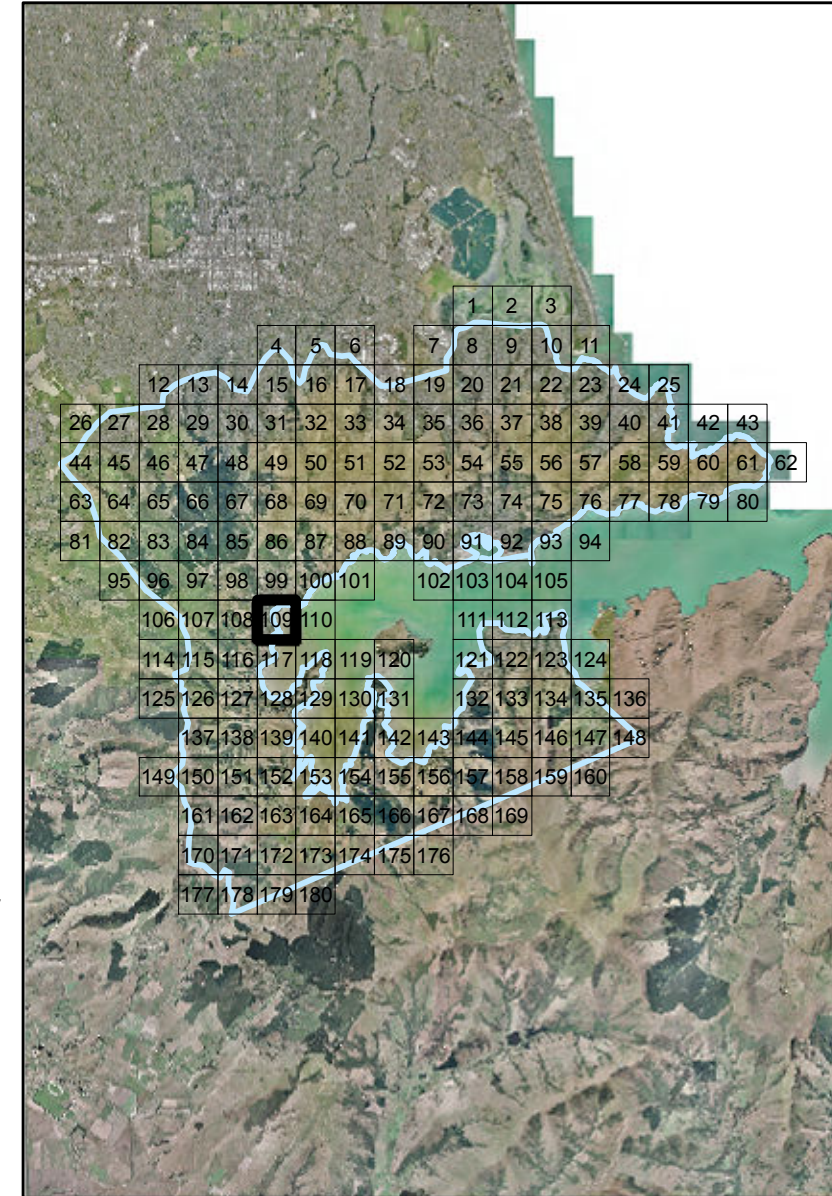
MAP: 109

See Map: 99



See Map: 108

See Map: 117



See Map: 110

Legend

- Insitu Boulders (20130422)
- Fallen Boulders (20130422)
- - - Cliff edge, July 2011
- Address Point
- Extent Of PHGG Study Area
- Property Boundary
- Bluff Talus (20130422)
- Bluff Insitu (20130422)
- Bluff Envelope (20130422)

Disclaimer:

Boulder locations are within approximately 10 metres.

Some boulders may have moved since being recorded, and additional boulders may have fallen.

Some locations represent clusters of boulders. Labels indicate the number of boulders at these locations.

Locations exclude cliff collapse and mass land movement effects.