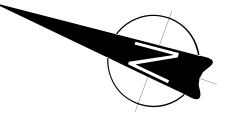


Appendix D: CEHZ result maps

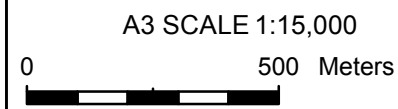
LEGEND

- ▲ Beach Profile Benchmark
- 2011 Shoreline
- ↔ Cells
- 2065 Coastal Erosion Hazard Zone
(Area Susceptible to Coastal Erosion Hazard to 2065)
- 2115 Coastal Erosion Hazard Zone
(Area Susceptible to Coastal Erosion Hazard to 2115)



Path: T:\Tauranga\Projects\851857\001\WorkingMaterial\GIS\MapDocuments\CEHZ\OpenCoastSpitCEHZ.mxd Date: 23/03/2015 Time: 3:25:13 p.m.

Notes: Aerial photograph taken in 2011



LINZ and Eagle Technology

Tonkin & Taylor
Environmental and Engineering Consultants
105 Carlton Gore Road, Auckland
www.tonkin.co.nz

DRAWN	PPK	Mar.15
CHECKED		
APPROVED		
ARCFILE OpenCoastSpitCEHZ.mxd SCALE (AT A3 SIZE)		
1:15,000		
PROJECT No.	851857.001	

CHRISTCHURCH CITY COUNCIL
Coastal Hazard Assessment
South New Brighton Spit
Coastal Erosion Hazard Zone

FIGURE No. Appendix D 7	Rev. 0
----------------------------	-----------

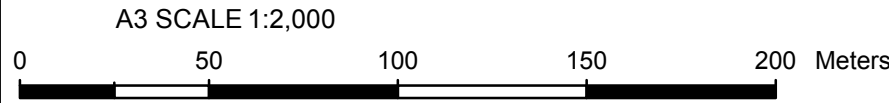


LINZ and Eagle Technology

LEGEND

- Baseline shoreline (2010)
- 2065 Coastal Erosion Hazard Zone
(Area Susceptible to Coastal Erosion Hazard to 2065)
- 2115 Coastal Erosion Hazard Zone
(Area Susceptible to Coastal Erosion Hazard to 2115)

Notes: Aerial photograph supplied by LINZ and Eagle Technology



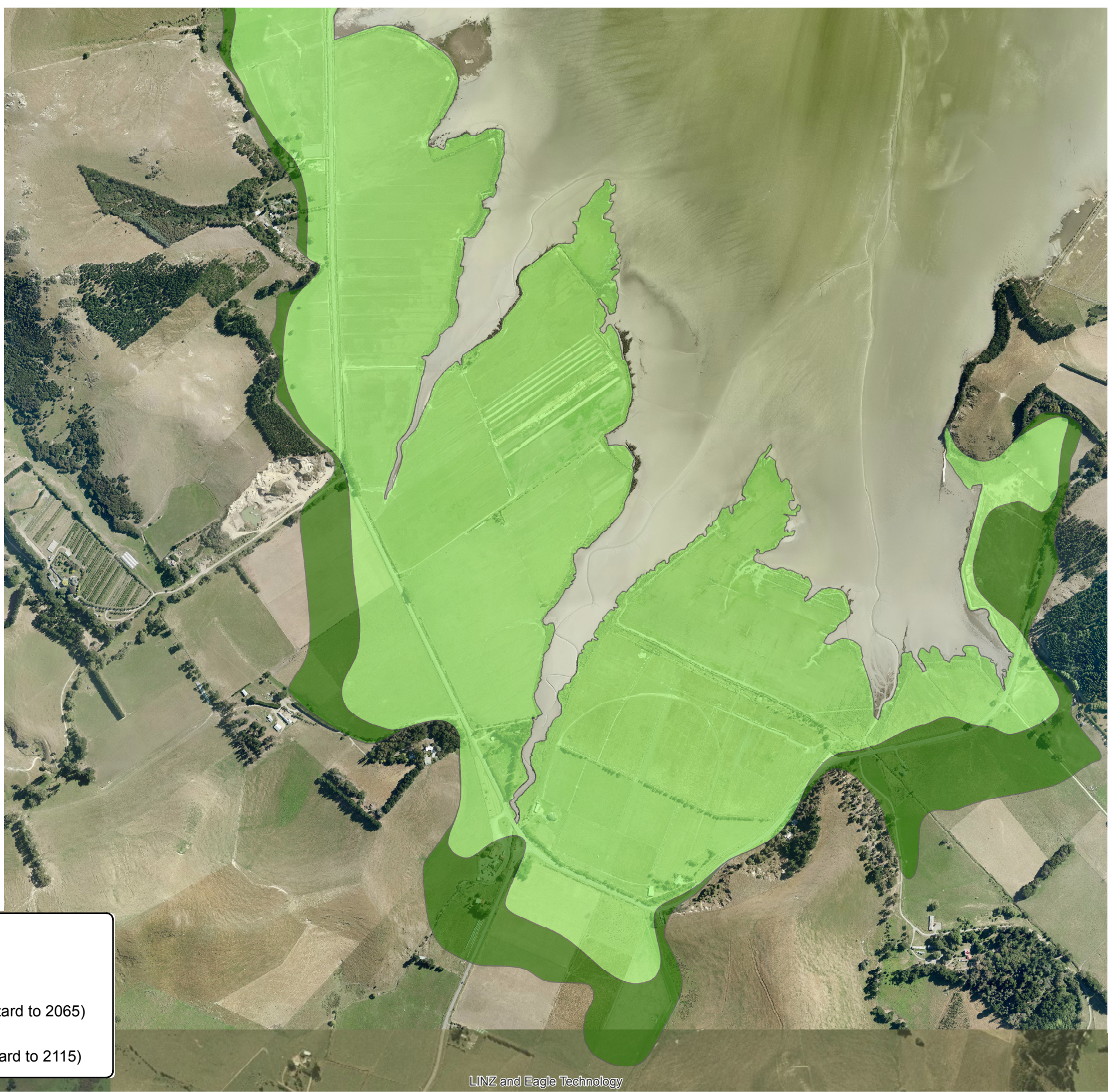
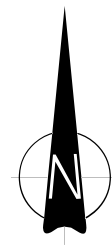
Tonkin & Taylor
Environmental and Engineering Consultants
Level 1, 525 Cameron Road, Tauranga
www.tonkin.co.nz

DRAWN	MCI	Mar.15
CHECKED		
APPROVED		
ARCFILE Alandale_CEHZ.mxd		
SCALE (AT A3 SIZE) 1:2,000		
PROJECT No. 851857.001		

CHRISTCHURCH CITY COUNCIL
COASTAL HAZARD ASSESSMENT
Alandale
Coastal Erosion Hazard Zone

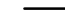


FIGURE No. Appendix D 8. Rev. 0

Path: T:\Tauranga\Projects\851857\001\WorkingMaterial\GIS\MapDocuments\CEHZ\Alandale_CEHZ.mxd Date: 17/03/2015 Time: 11:57:31 a.m.

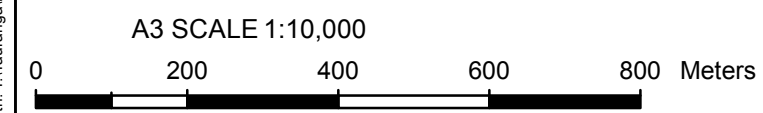


LINZ and Eagle Technology

LEGEND

-  Baseline shoreline (2010)
-  2065 Coastal Erosion Hazard Zone
(Area Susceptible to Coastal Erosion Hazard to 2065)
-  2115 Coastal Erosion Hazard Zone
(Area Susceptible to Coastal Erosion Hazard to 2115)

Notes: Aerial photograph supplied by CCC, LINZ and Eagle Technology




Tonkin & Taylor
Environmental and Engineering Consultants
Level 1, 525 Cameron Road, Tauranga
www.tonkin.co.nz

DRAWN	MCI	Mar.15
CHECKED		
APPROVED		
ARCFILE Teddington_CEHZ.mxd		
SCALE (AT A3 SIZE) 1:10,000		
PROJECT No.	851857.001	

CHRISTCHURCH CITY COUNCIL
COASTAL HAZARD ASSESSMENT
Teddington
Coastal Erosion Hazard Zone

FIGURE No.	Appendix D 9.	Rev.	0
------------	---------------	------	---