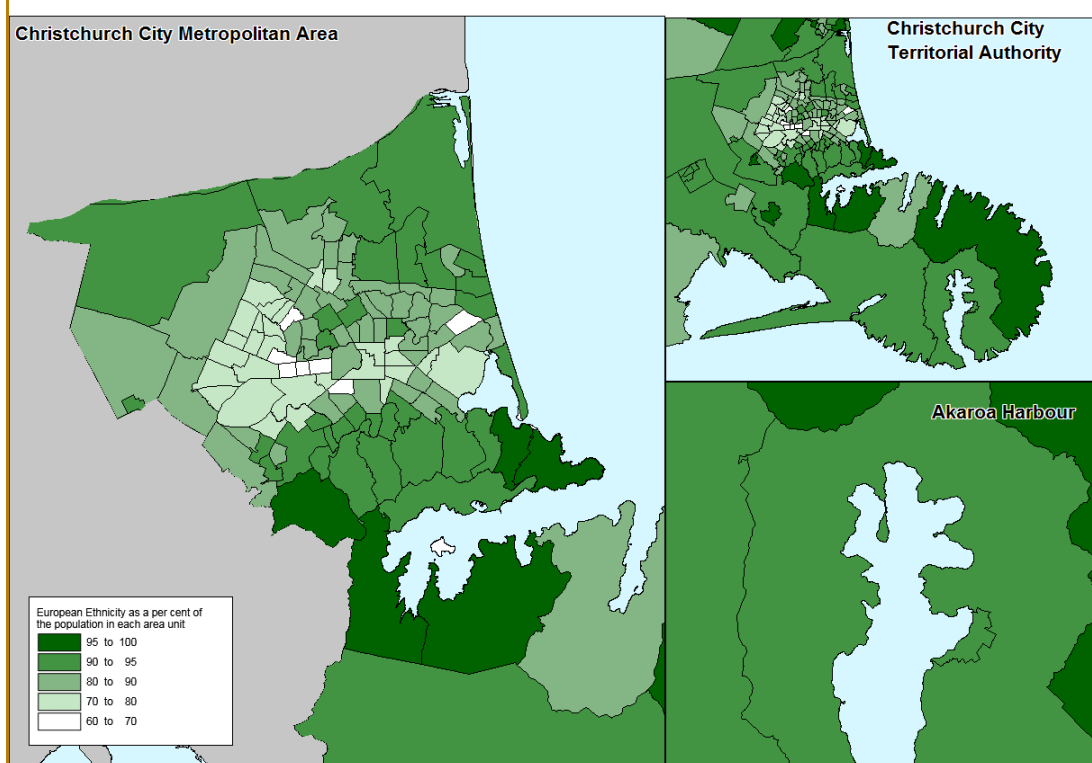


Age, Gender and Ethnicity

Ethnic Groups

Population belonging to the European Ethnic Group by Area Unit, 2013



Source: Statistics New Zealand: Census of Population and Dwellings.

Key Points:

- The European ethnic group is the largest in Christchurch City, with 273,303 people (84 per cent of the population) identifying with this ethnic group in 2013.
- Higher proportions of Europeans are generally found on or near the Port Hills, particularly in Sumner, Monks Bay and Kennedys Bush as well as throughout Banks Peninsula, particularly Governors Bay, Diamond Harbour and the Eastern Bays.
- Higher proportions are also located to the north of the City, including Mcleans Island, Belfast, Styx, Travis Wetland and Waimairi Beach.
- Lower proportions of the European ethnic group are generally found in area units west of the central city, particularly around Riccarton, as well as in the Central City and to the east of the City, particularly in Aranui, Bromley, Linwood and Philipstown.

What is this about?

This map shows the locations of people who belong to the European ethnic group by area unit (suburbs) in Christchurch City.

The New Zealand European ethnic group generally includes people who have migrated to New Zealand from other countries such as Australia, England, Ireland, Scotland, Wales and other European countries. It also comprises residents who were born in New Zealand and are descendants of European settlers and migrants.

Factors such as age, sex and ethnicity are key components of the population that may be relevant to a wide range of issues. This information may be useful in helping decision makers develop an understanding of the changing needs of the community and anticipate potential pressures on the wider environment.

Data limitations:

Percentages are calculated as a percentage of those people who responded to the ethnicity question in the Census (total people stated). This will be a smaller number than the total usually resident population.

People can identify with more than one ethnicity therefore the percentages in a particular geographic area for all ethnic groups may add up to over 100 per cent. This map shows the proportion of the European ethnic group in each area unit as a percentage of the total people stated. It does not show the total number of people of the European ethnic group, rather it shows the areas of the City that have higher or lower proportions of this ethnic group.

"Ethnicity is the ethnic group or groups a person identifies with or has a sense of belonging to. It is a measure of cultural affiliation (in contrast to race, ancestry, nationality, or citizenship). Ethnicity is self-perceived and a person can belong to more than one ethnic group.", (Statistics New Zealand, 'Definitions and Forms', 2013).