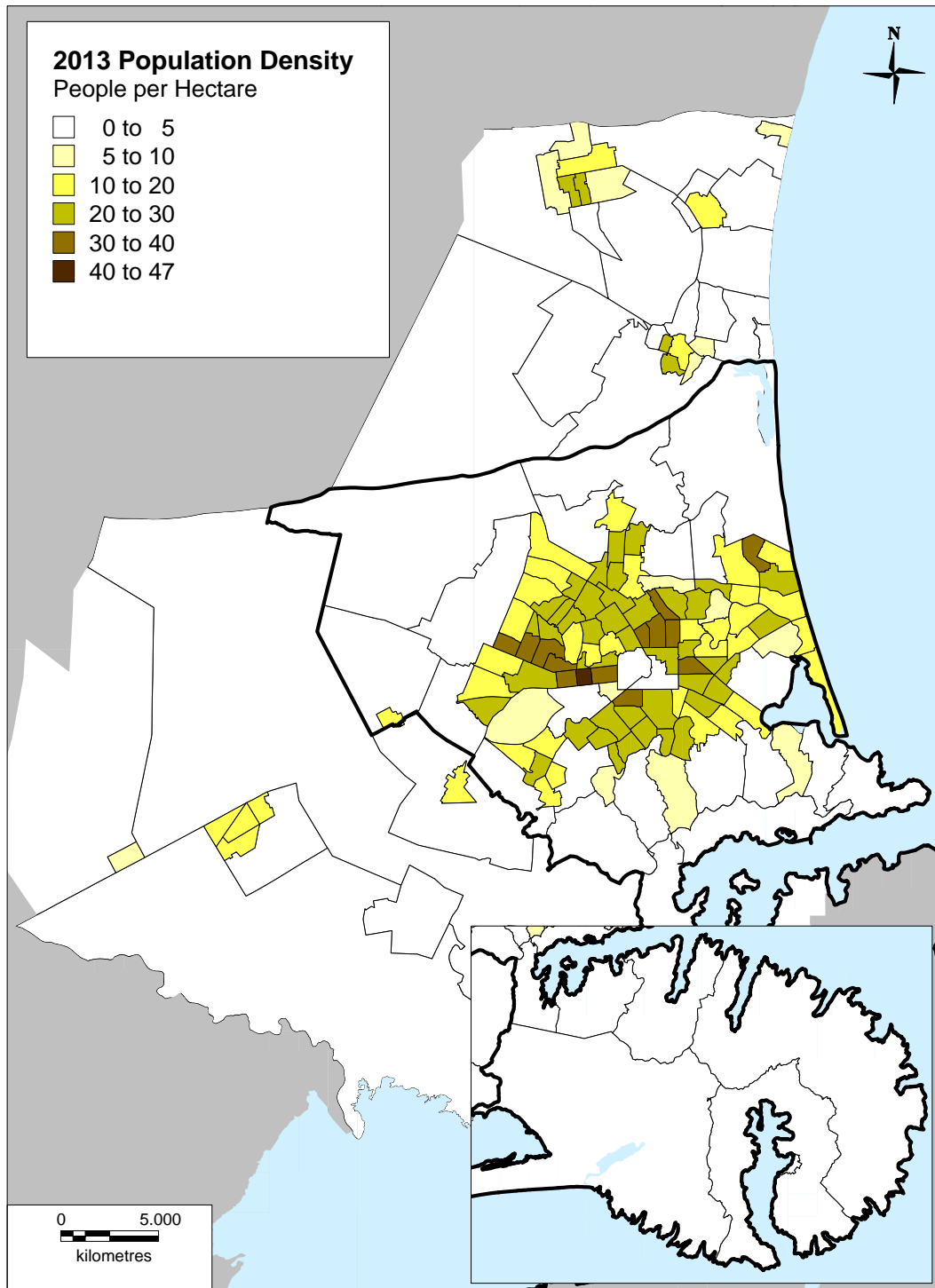


## 2013 Population Density

People per Hectare

- 0 to 5
- 5 to 10
- 10 to 20
- 20 to 30
- 30 to 40
- 40 to 47

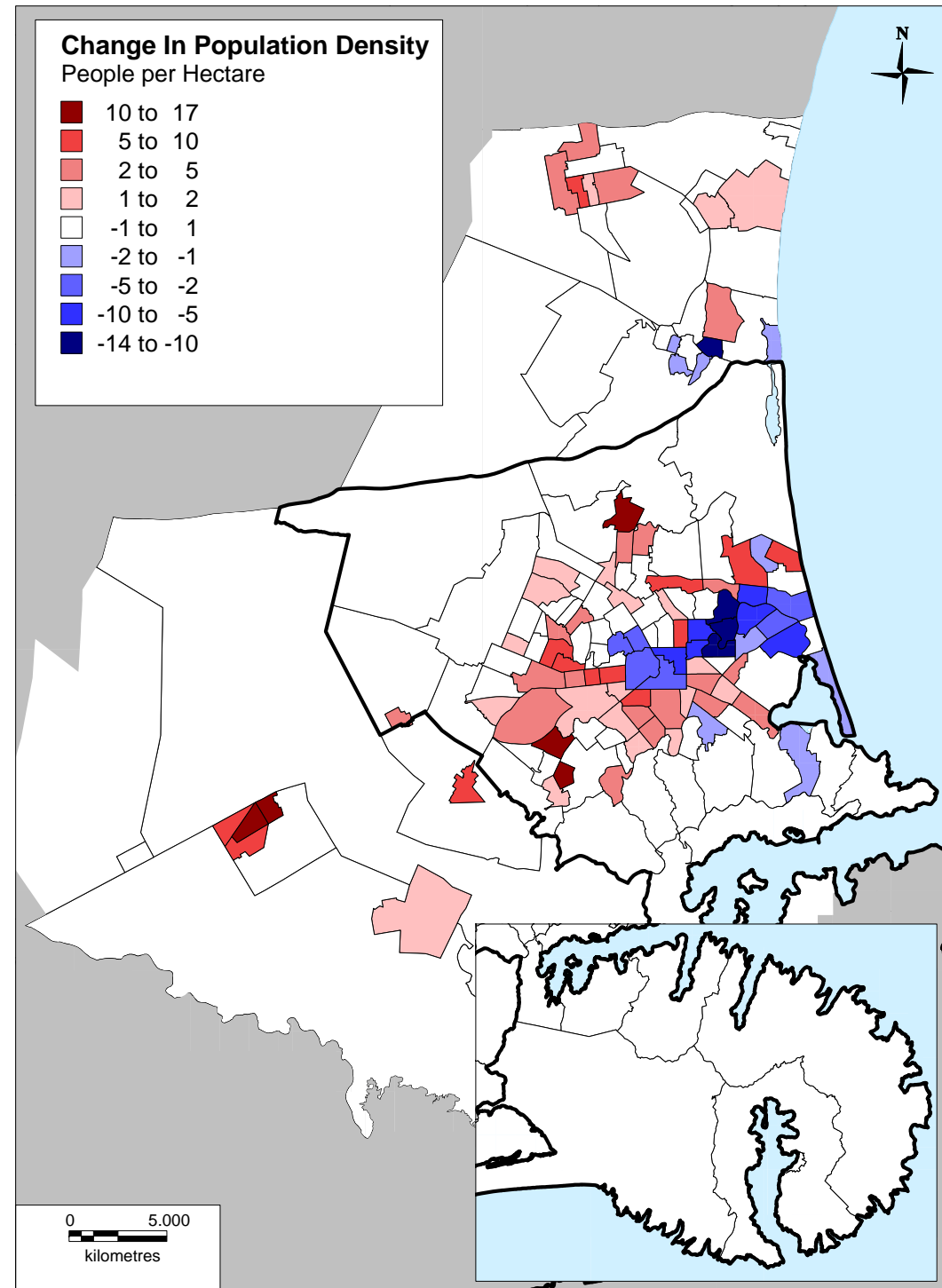


0 5,000  
kilometres

## Change In Population Density

People per Hectare

- 10 to 17
- 5 to 10
- 2 to 5
- 1 to 2
- 1 to 1
- 2 to -1
- 5 to -2
- 10 to -5
- 14 to -10



0 5,000  
kilometres

**Population Density (people per hectare) 2013 for UDS Area Units**

Source: Statistics New Zealand, Census of Population and Dwellings 2013  
Prepared by: Monitoring & Research Team (CCC), October 2013

**Change in Population Density 2006-2013 for UDS Area Units**

Source: Statistics New Zealand, Census of Population and Dwellings 2006 and 2013  
Prepared by: Monitoring & Research Team (CCC), October 2013