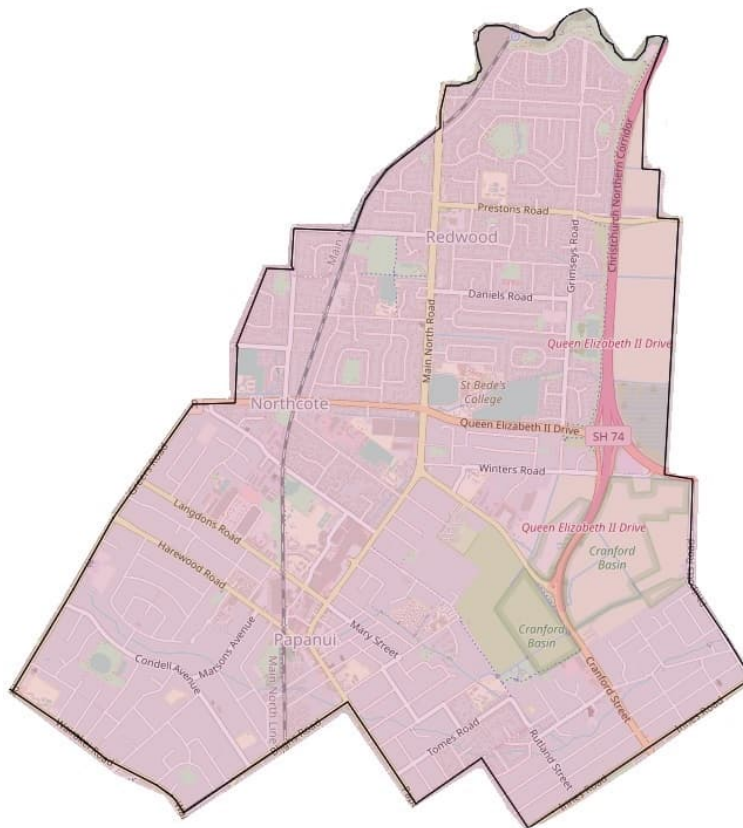


PAPANUI WARD PROFILE

February 2023



The Papanui Ward includes the suburbs of Papanui, Redwood, Northcote, Sawyers Arms and borders Bryndwr, Casebrook, Bishopdale, Strowan, Merivale, Mairehau and Northwood. Papanui was the original Maori name for Bishopdale and the Papanui district and is the Maori word for 'a platform in a tree from which birds are shared'. Papanui Bush once boasted an abundance of forest birds that were snared for kai, (food). The area was, originally covered by a large stand of forest, dominated by Totara, Matai, Kahikatea and Kanuka trees. The milling of this area in the 1850's rapidly demolished the entire 30 hectares of bush.

Newer, adjacent suburbs to the original Papanui Township were established over the last 120 years. Residential housing in Northcote commenced in 1900-1909 with the majority constructed between 1950-1959. Redwood where the earliest recorded residential housing was constructed between 1910-1919 with the majority constructed between 1970-1979. In addition, nine retirement homes have been built and operating within the Papanui Ward.

Every six years local authorities are required, by the Local Electoral Act 2001 to review their representation arrangement. The resultant boundary changes now mean that suburb of Belfast and the major community organisation, the Belfast Community Network, will now "sit" within the Waimāero Fendalton-Waimairi-Harewood Ward as will the Groynes, Lake Roto Kohatu Reserve and the Styx River Conservation Reserve.

Compiled by the Community Support and Partnerships Unit

Facts and figures

Demographic Summary (2018 Census Data)

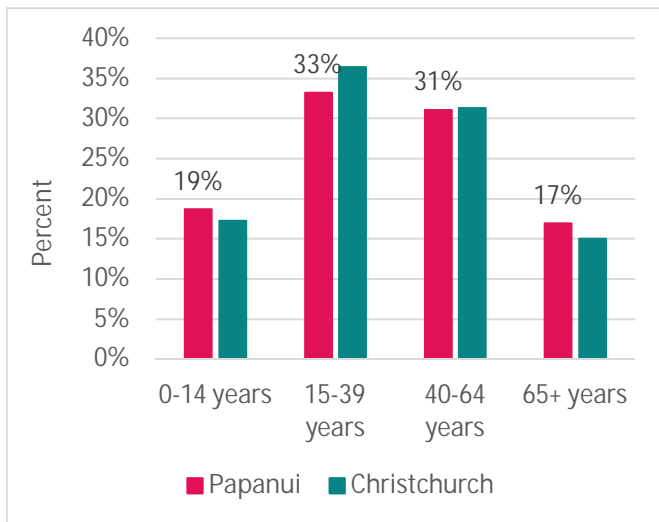
Population

The population within the Papanui Ward boundary is: 23,349

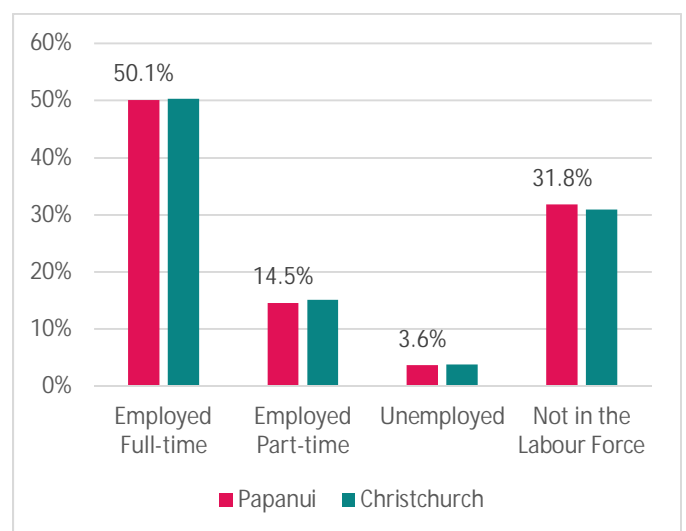


Number of Occupied Private Dwellings: 9,555

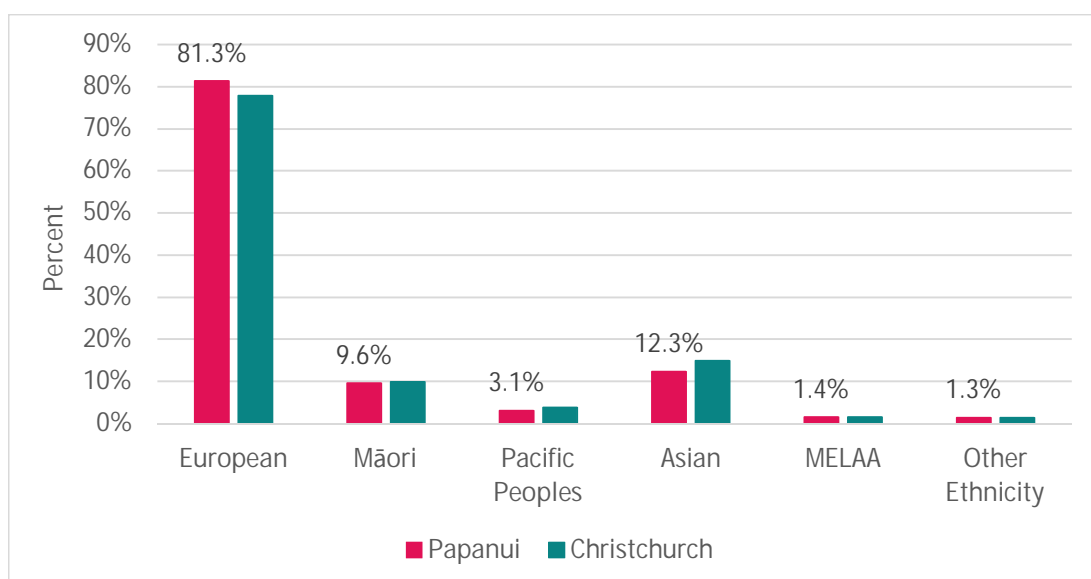
AGE



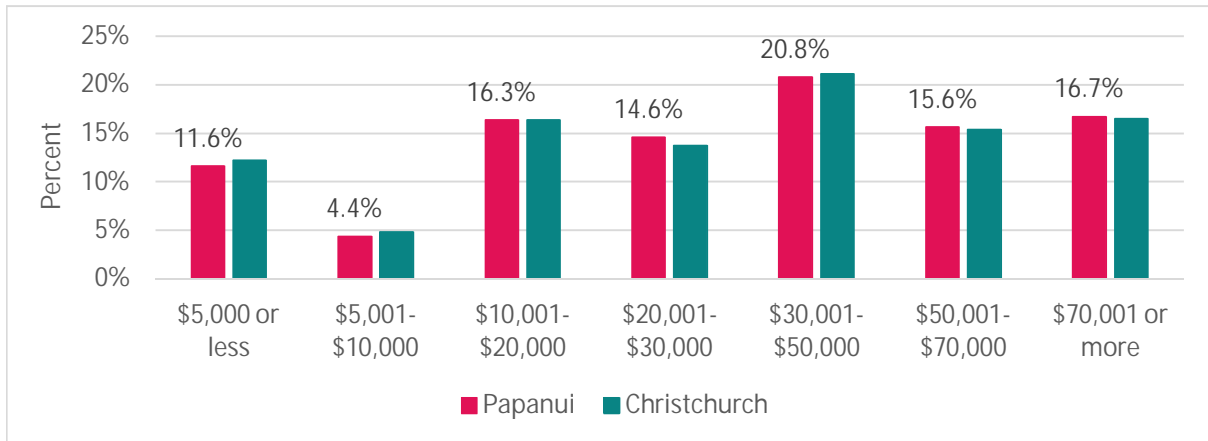
WORK AND LABOURFORCE STATUS



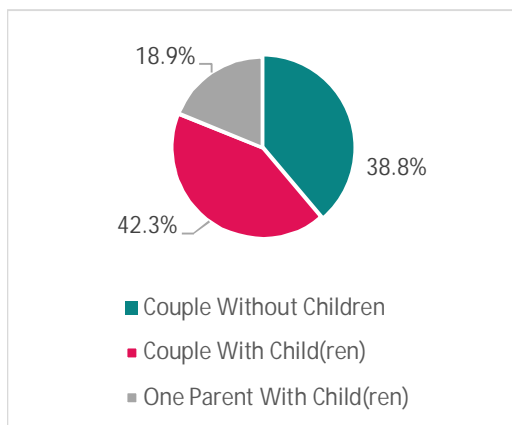
ETHNICITY



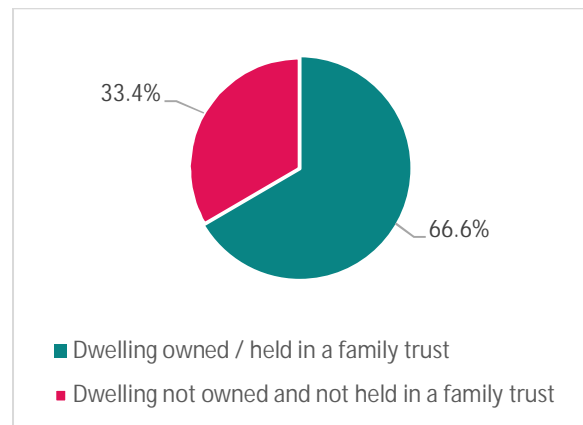
PERSONAL INCOME



FAMILY TYPE



TENURE OF HOUSEHOLDS



Facilities and Amenities

- 2 Council Libraries: Papanui and Redwood Library.
- 1 Council Service Centre : Papanui
- Otautahi Social Housing units 117 units and Kāinga Ora 475 homes. Mairehau 52, Redwood 112 Sawyers Alms 20, Wainoni 21, Northcote 103, Papanui 63, St Albans East 65, Strowan 39, (475 homes.) In the last two years. (In the last two years Kāinga Ora has built new homes in Hoani/Wilmot St, Harewood Rd, Pitcairn Cres, and Meadow St within the Ward).
- 5 shopping centres: Northlands Shopping Centre, Papanui Road Businesses, Northlink Shopping Centre (Langdons Road), Cranford Street Business Park, and a retail hub in the suburb of Redwood.
- 11 Schools: 2 Secondary, 6 Primary, 1 Intermediate, 1 Composite Year 1-13, 1 Special. (Note Marian College is being retrofitted inside the former Foodstuff Distribution Centre in Lydia St. Once completed (2023) it will consist of 26 classrooms, a chapel and a fully equipped sports hall.)
- Approximately 2,310 businesses employing 9,052 people (February 2021)
- Major sport and recreation amenities: Graham Condon Recreation and Sports Centre.
- The Ward is also home to a number of Government Departments including Kāinga Ora (previously Housing New Zealand), Work and Income and the Department of Corrections. Non-Government Agencies with a Metropolitan wide reach, such as Te Ora Hou, Aged Concern and the Methodist Mission are also located in the Ward. Also the Braintree Trust a partnership between Multiple Sclerosis Parkinsons Canterbury and Dementia Canterbury and is located in Langdons Road.

Socio-economic Deprivation

The aim of the New Zealand deprivation index research programme is to develop indexes of socioeconomic deprivation for New Zealand, to support and inform:

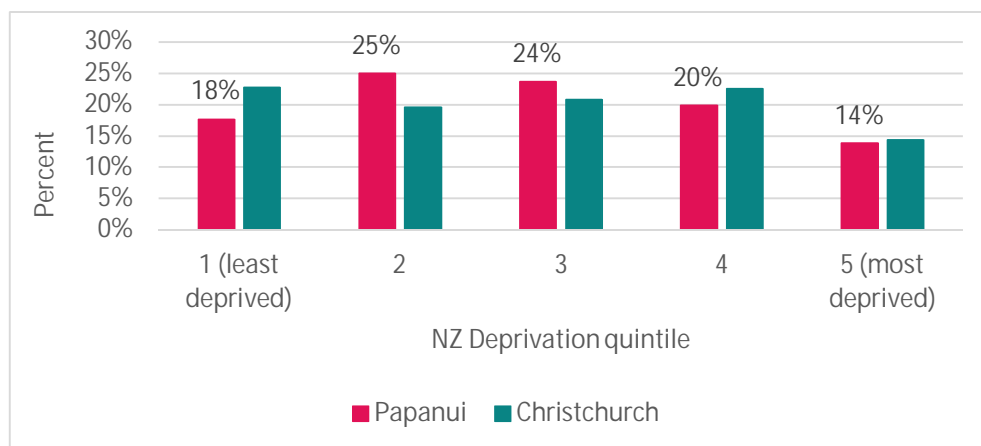
- Application in funding formulas
- Research in especially health and other social services. For example, in the health sector, many researchers use the indexes to describe the relationship between socioeconomic deprivation and health outcomes
- Community groups and community-based service providers to describe the populations they serve, and to advocate for extra resources for community-based services.

The nine variables included in the 2018 deprivation index are as follows:

- People aged 18-64 receiving a means tested benefit
- People living in households with equivalised income below an income threshold
- People with no access to the Internet at home
- People aged 18-64 without any qualifications
- People aged <65 living in a single parent family
- People not living in own home
- People living in household with equivalised bedroom occupancy threshold
- People aged 18-64 unemployed
- People living in dwellings that are always damp and/or always have mould greater than A4 size.

The scale of deprivation ranges from 1 to 10: 1 represents the areas with the least deprived scores. 10 represents the areas with the most deprived scores.

- Relative to the rest of Christchurch City, Papanui Ward had similar levels of deprivation overall.
- In Papanui Ward, around 14 per cent of this Ward's population lived in the 'most deprived' areas (i.e. deciles 9 and 10). This was the same proportion for of all of Christchurch City's population.
- Around 18 per cent of this Ward's population lived in the 'least deprived' areas (i.e. deciles 1 and 2), compared with 23 per cent of all of Christchurch City's population.

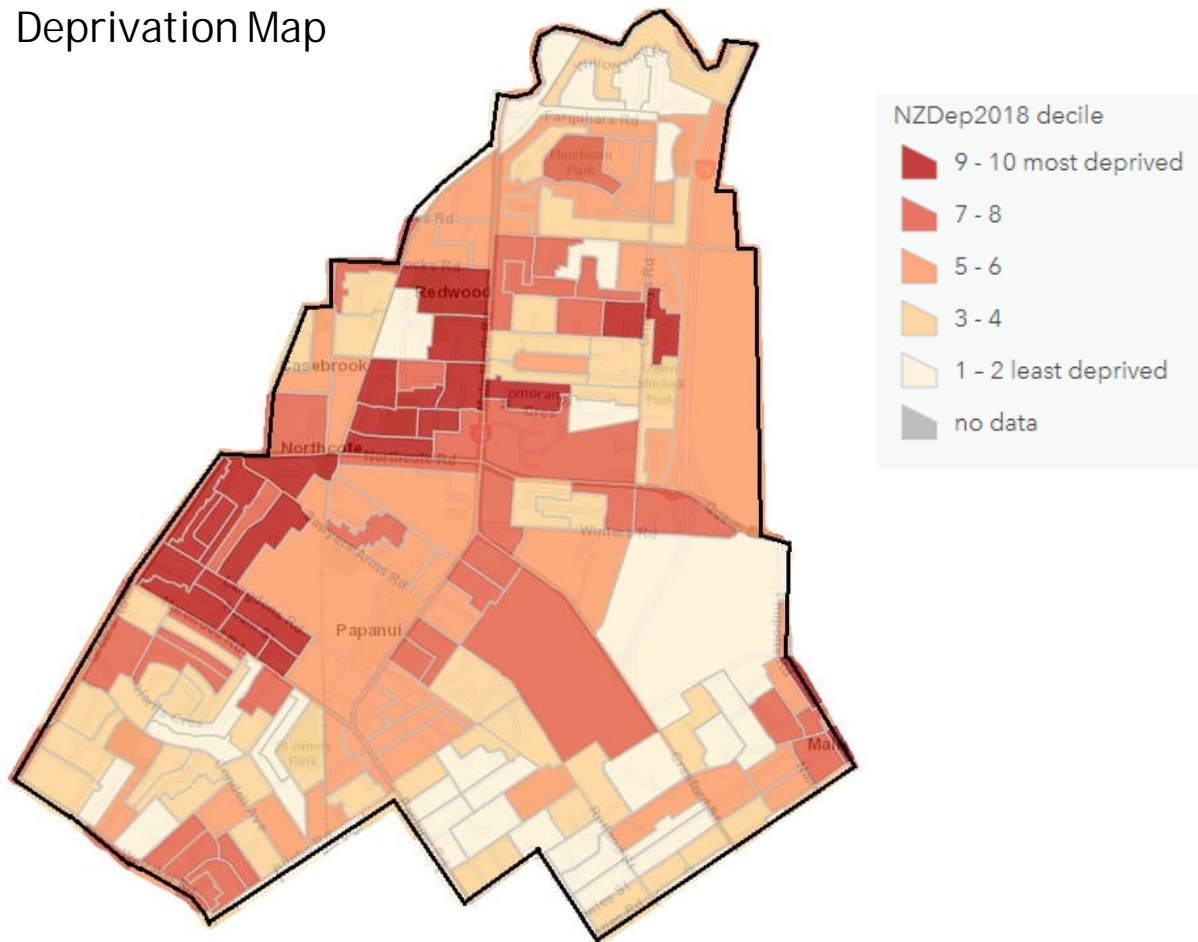


For more information and to view the full NZ Deprivation map visit:

<http://www.ehinz.ac.nz/indicators/population-vulnerability/socioeconomic-deprivation-profile/>

(Massey University)

Papanui Ward Deprivation Map



The Papanui Ward contains areas ranging from the most deprived to the least deprived. In the north-west and central-west sector of Papanui Ward it is important to note that there are connecting pockets of deprivation identified by the index, in areas such as Papanui, Northcote, Casebrook and Redwood with an area also around Owen Mitchell Park along Grimseys Road to the central east of the Ward.

According to the 2018 Census statistics, 50.1 percent of the population are employed full time, 14.5 percent are employed part time, 3.6 percent are unemployed and 31.8 percent identify as not being in the work force. In respect of total personal income, 16.7 percent earn more than \$70,000 while 11.6 percent earn less than \$5,000. The average median income is \$33,000.

In respect of household tenure, 66.6 percent of the households are owned or held in a Family Trust, leaving 33.4 percent not owned or held in a Family Trust.

As at the 2018 Census, the median weekly rent across the Ward was \$360, however this figure is likely to be significantly higher following the next Census.

It should be noted that the new Census is due to be held in 2023 and that the 2024 Profiles will reflect this.

Community Infrastructure



The Papanui Ward is fortunate in respect of the depth and breadth of community services for both older adults and youth and the wide community. Neighbour Trust provide a popular “Golden” programme for older adults and an Oscar and holiday programme for children. Aged Concern is based in the Papanui Ward and its services delivered citywide. The Ward is extremely well resourced for local youth, with strong youth agencies/programmes and collaboration between agencies. Papanui has a major youth facility (Papanui Youth Development Trust) which hosts music recording, craft, and gaming rooms, a climbing wall, and a computer suite. Northgate Trust operates Zion Dance Studio, which works with approximately 300 youth per week, and the dancers have competed both internationally and nationally.

Te Ora Hou Ōtautahi is also based within the Ward and is committed to the holistic development of young people, their whānau and communities. The partnership between community organisations and local schools in the Ward is strong, with for example the Breakfast Club at Northcote School operating five days per week supported by Papanui Baptist Church Community Services Freedom Trust in conjunction with a number of community organisations. Youth workers from Papanui Youth Development Trust also deliver student and guidance support at Casebrook and Belfast Schools.

Within the Ward a variety of recreation opportunities are available to residents including the Graham Condon Recreation and Sport Centre, three Bowling clubs, two Cricket clubs, a Rugby League club, a Rugby club and an Athletics club. There are also a number of arts and craft, leisure, friendship, senior, music, youth, holiday and disability focused programmes available. The Papanui Club is a well-utilised venue for social groups to meet and adult education programmes are provided at Papanui High.

In the wake of ongoing research around the decline of play, the effects of COVID-19 and the challenges families face keeping kids active a collective of community groups and sports organisations teamed up to deliver new activities outside of traditional sport and recreation. The project is called Kia Kori Waitaha. In 2021 the Kia Kori Waitaha play programme visited twenty schools throughout North-west Christchurch, hosted 18 events, ran six weekly afterschool programmes and youth groups, and hosted seven weekly play hub locations, equally up to 20,400 participation throughout the year. This project continues take a community recreation approach targeting grassroots participation.

Community Outcomes

The Community Outcomes have been developed as part of the Council's Strategic Framework, which provides a big picture view of what the Council is trying to achieve for the community.

The Community Outcomes describe what we aim to achieve for Christchurch. They are:

- Resilient communities
- Liveable city
- Healthy environment
- Prosperous economy

You can view the Council's Strategic Framework and read more about the Community Outcomes here: <https://ccc.govt.nz/the-council/how-the-council-works/20182028-vision/strategic-framework>

The narrative below provides an overview of the area in relation to each of the outcomes.

Resilient Communities

Within the Papanui Ward the strength, reach and depth of the service delivery of the community groups is measured not only with their capacity to respond to the needs in the community and to support the ability of communities to withstand, adapt to, and recover from adversity, but also the high level of peer support and collaborative work undertaken which is a feature. Of note in this respect is the NorthWest Collective comprising of nine local community groups which support and develop shared resources and share expertise and peer support. The Northcote Stakeholders group that is focused in the Northcote /Redwood area around the catchment of Northcote school and the Papanui Advisory Committee which is made of youth and youth workers within the Ward and delivers events in partnership with the local Council Community Recreational Advisor.

Concurrently with the Ward wide Non-Government Organisation collaboration, the Council is a partner in the development and support of the organisations both financially and collaboratively. The relationships and engagement between the Council and local organisations is historical and currently remains strong.

As well as ongoing liaison between organisations and the Council, the Community Board hosts a bi-monthly networking/ liaison meeting, which allows all groups within this community to meet, network, and speak openly about projects and concerns. A wide range of community groups and central government agencies attend the liaison meetings. The liaison meeting highlights local services and activities and encourages ongoing collaboration between groups the local community and Council staff. In summary organisations across the Papanui Ward are strong in reach and impact and well connected. There are key groups with strong community development principles, sports clubs with high participation rates and strong faith-based organisations. There is strong capability and a strong collaboration and partnership practice.

Previous research undertaken within the Ward has highlighted the issue of social isolation, housing need and ongoing food security (access to sufficient, safe, and nutritious food.) These issues have also been reported by community organisations and church groups. The historical collaborative nature of community organisations and churches within the Ward has engendered a joint effort in continuing to address these issues.

The community response and cross agency support is a hallmark of the community development delivery within the Ward. The sharing of expertise and resources between groups engenders a strong, resilient and sustained ability of communities to withstand, adapt to, and address and recover from adversity.

The Community Board provides funding for a range of projects across the Ward via the Strengthening Communities Fund, the Discretionary Response Fund and the Youth Development Fund, which provides a small contribution to young people undertaking recreational or personal development activities.

Members of the public also have the opportunity to address the Community Board in person in respect of issues that have an impact on their or their communities' wellbeing.

Within the Ward, the historically strong collaborative partnership via the triumvirate of community organisations, church groups and the Community Board continues to deliver a unified response to issues that arise within the community. This term the Community Board is planning to hold a number of its meetings in various community organisation and locations.

In respect of resilient communities, the experience gained by community based organisations from the first and subsequent lockdowns and response to COVID-19 has shaped the way the organisations work going forward. The balancing act of the responding to and addressing the increased isolation of society's most vulnerable plus the ongoing divergent needs of the community, staff safety and wellbeing, and the loss of income from groups, programmes, events, and activities have been major issues for organisations.

The need for the stringent review of Risk Management Plans and Health and Safety requirements has been, and will be in the future, an ongoing requirement for organisations as they support the health, safety and wellbeing of their staff, clients, members and the local community.

Liveable City

The Papanui Ward is located five kilometers north-west of the Central Business District of Christchurch and its location provides access to most services and regular public transport options. Papanui Township is the junction of three busy thoroughfares; Papanui Road leading to the city, Main North Road that leads to North Canterbury and Harewood Road that leads to Christchurch International Airport. The main north rail line also passes through the Ward.

The Community Board identifies that a city with a good transport network is vital for a connected and accessible community. The Board will ensure that community safety is at the forefront of all transport recommendations and decisions it makes, including the need for safe speeds and safe streets for all of our residents.

The Board is also committed to supporting the Climate Resilience Strategy and will continue to advocate strongly for active transport modes and networks to support walking, cycling, and public transport.

In respect of the Papanui Ward the Board priorities include support for the installation of traffic lights on the Greers/ Langdon Road intersection. The Board will also advocate for effective safety measures, and improved efficiency along the Langdons Road corridor from Northlands Shopping Centre to the Northlink Shopping Centre.

Work has been completed on the north bound bus lane on Main North Road between Winston Avenue and Sawyers Arms Road. A new bus lane has been installed and new traffic lights at the intersection of Main North Road and Grassmere Street and layout changes to the entrance of the Northlands Shopping Centre. The southbound bus lane will also operate in the afternoon peak traffic period and the changes should improve safety and efficiency of the transport network.

The Christchurch Northern Motorway affects Papanui residents, as previously northern commuters used Main North Road as part of the commute between Christchurch Central Business District and the northern suburbs. With the extension of the Christchurch Northern Corridor joining the Christchurch Northern Motorway traffic will bypass Main North Road and commuters will travel through the eastern side of Redwood joining Cranford Street.

The Christchurch-Papanui Parallel Cycle way - Puari Ki Papanui way was the first of 13 major cycle routes linking the Central City to the suburbs. Opened in 2017 the 4.9 km route consists of two-way and one way separated cycle ways, an off-road shared path between Grassmere Street and Rutland Street and a low speed neighbourhood greenway on Trafalgar Street. The project included intersection upgrades and signalised crossings at the Main North Road/Sawyers Arms Road, Sissons Drive/Sawyers Arms Road and Rutland Street/St Albans Street intersections. The planned Wheels to Wings Papanui ki Waiwhetū cycle route will provide a connection for local cycling trips in the Papanui, Bishopdale, and Harewood suburbs. The cycle way will connect with the Johns Road cycleway and pedestrian underpass linking through to the commercial areas surrounding the airport.

Healthy Environment

In total there are there are 17 parks and reserves within the Ward area including the major spaces of St James Park, Redwood Park, Edgar McIntosh Park and Papanui Domain. The Papanui Ward is the gateway to the Northern and Northwest parts of the city. These destinations include the unique landscapes and indigenous bio-diversity of the Groynes, Lake Roto Kohatu Reserve and the Styx River Conservation Reserve.

Regeneration of the Cranford Basin is being undertaken by Conservation Volunteers New Zealand who have received Department of Conservation funding to coordinate the planting of 40,000 Kahikatea trees in Cranford Basin, which is land managed by the Three Waters unit of the Christchurch City Council.

In recent years, the Community Board and Council staff have worked alongside the community to commence to re-establish the native bush in the area between the railway line and the Langdons Road retail centre previously milled in the 1850's. The Board has also collaborated with the Christchurch City Council Rangers and students of Paparoa Street School in the first steps in recreating a Kahikatea forest in Rutland Reserve.

Prosperous Economy

As at February 2021, the Papanui Ward had approximately 2,310 businesses employing 9,052 people.

Out of those 2,310 businesses, the top six industry types (in order) are as follows:

1. Rental, Hiring and Real Estate services
2. Construction
3. Professional, Scientific and Technical Services
4. Retail Trade
5. Health Care and Social Assistance
6. Financial and Insurance Services

The Papanui Ward is comprised of a number of small street/block areas with a large retail and commercial centre at Northlands. Within the area there are two major commercial bases namely Northlands Shopping Centre, and Northlink Shopping Centre, plus the original shops that populate the junction of Papanui, Harewood, and Main North Road which provides not only a varied business hub but in conjunction with

the adjacent high school, Graham Condon Recreation and Sport Centre and Papanui Library provides a strong focal/gathering point for both the young and older members of the community.

The physical amenity of this wider retail area is above average with obvious consumer appeal. The traditional main street has undergone some reinvestment and remains vibrant with the local business association adding some street enhancements. From a social perspective, the wider retail area has a village feel in that healthcare, community/public facilities and open spaces are all within close proximity. The central position of Papanui High School injects a good deal of vibrancy into the centre, supporting recreation at the Graham Condon Recreation and Sports Centre.

Accessibility is high for all modes of transport with cycling particularly well catered for. Public transport provision is good and pedestrian movement is supported by a permeable street pattern and well-placed crossing points. The success of the centre generates traffic congestion with volume-related safety concerns at certain intersections.

The traditional centre along Papanui Road remains in small format tenancies with current vacancies in the block between Wyndham and Frank Streets.

Recent Harewood Road development includes the Northlink Shopping Centre providing numerous retail outlets while the land between the railway and Northlinks has been established as an area for offices. The Chapel Street/Harewood Road Mitre 10 DIY store, which was built on the site of the demolished Sanitarium factory, has emerged as a successful, separate large format retail destination.

The Ward is also serviced by the shopping centre in Redwood, the Cranford Street Business Park and the smaller retail services based around the intersection of Wairakei and Greers Roads, with Bishopdale Mall in the Harewood Ward only 2.3 km or 5 minutes via Harewood Road from Northlands Shopping Centre by car.

Current Community Issues

Issue	Progress to date / outcomes
<p>Post COVID19 response and the major community issues around social isolation, adequate income, increasing housing costs and food security.</p>	<p><u>February 2021</u></p> <p>The Community Board through its various funding schemes is supporting the major community organisations within the Ward not only with their core business around these issues but also with additional support in respect of ongoing increased demand post-COVID 19.</p> <p>Community organisations and Church groups within the Ward are working closely together sharing resources and expertise to reach and support the most vulnerable within the Ward.</p> <p><u>February 2022</u></p> <p>Ongoing COVID-19 Response through 2021 and 2022 continues to highlight issues around social isolation, adequate income, increasing housing costs and food security.</p> <p>Organisational health checks undertaken with the major community organisations within the Papanui Ward throughout 2021 and January 2022 have highlighted the stress that organisations are facing in responding to the needs of the community and the welfare and resilience of staff.</p> <p>Issues such as the cancellation of major events and the loss of or the limiting of attendance has had an impact not only on local organisations engagement with the community but also on the organisations income.</p> <p>The ongoing COVID-19 scenarios have meant a loss of available volunteers (especially the dedicated older volunteers) who traditionally have been an important component in the successful running of organisations.</p> <p>The ongoing experience gained from the first and subsequent lockdown has shaped the way the community organisations work going forward.</p> <p>The organisations report that the necessary ongoing review of their Risk Management Plans have been completed and are being implemented across the organisations.</p> <p>Awareness as organisations of the need to be flexible and develop new ways of working while managing risk as they support the health, safety and wellbeing of their staff, clients, members and the local community.</p>

	<p>Due to the COVID-19 environment, organisations have reviewed Health and Safety guidelines and a review of all aspects of general risk across the organisation.</p> <p>Openness to new ways of working and how organisations can focus on engagement in the new environment.</p> <p>New connections developed and existing connections maintained through COVID lockdowns and Traffic Light settings via meals provided and distribution of food boxes has ensured ongoing contacts with the most vulnerable. It also allows the opportunity for ongoing referrals and the opportunity for volunteers to step up and find their place within the organisation.</p> <p><u>February 2023</u></p> <p>As above, the resultant learnings has engendered an openness to new ways of working and how organisations can focus on engagement in the new environment.</p>
<p>Traffic issues within and around the Papanui business centre.</p>	<p><u>February 2021</u></p> <p>Increased traffic issues particularly along the Langdons, Harewood, Greers and Sawyers Arms Roads continue to be reported to the Community Board. The development of Northlink Shopping Centre in Langdons Road has increased traffic flow and parking issues. The proposed commencement of the Papanui section of the Wheels to Wings cycle way may exacerbate these existing issues.</p> <p>The Community Board and Council staff are well aware of the situation and liaise with residents around these issues.</p> <p><u>February 2022</u></p> <p>Traffic lights and pedestrian refuge:</p> <p>The Community Board is advocating via the upcoming Christchurch City Council Annual Plan, for traffic lights at the intersection of Greers and Langdons Roads to improve traffic flow. Pertaining to this, the development of Northlink Shopping Centre Stage 3 building and the subsequent decision on roading works may influence this.</p> <p>Also raised by the Community Board was the need to improve pedestrian safety in the area. Feedback was sought by the Council (November-December 2021) on the proposed installation of two new pedestrian cross points on Langdons Road. A recommendation will come to the Community Board early in 2022.</p> <p><u>February 2023</u></p> <p>The Community Board identifies that a city with a good transport network is vital for a connected and accessible</p>

	<p>community. The board will ensure that community safety is at the forefront of all transport recommendations and decisions it makes, including the need for safe speeds and safe streets for all of our residents.</p> <p>The Board is also committed to supporting the Climate Resilience Strategy and will continue to advocate strongly for active transport modes and networks to support walking, cycling, and public transport.</p> <p>In respect of the Papanui Ward the Board priorities include support for the installation of traffic lights on the Greers/ Langdon Road intersection. The Board will also advocate for effective safety measures, and improved efficiency along the Langdons Road corridor from Northlands Mall to the Northlink Centre.</p> <p>Pedestrian refuges have been installed opposite Northlink in Langdons Road to improve pedestrian safety.</p>
<p>The activation of the Northcote/Redwood (Neighbourhood Links) building.</p>	<p><u>February 2021</u></p> <p>The Christchurch City Council has repurposed the old Plunket rooms located beside the Redwood Library, which has been, renamed Neighbourhood Links.</p> <p><u>February 2022</u></p> <p>The building is, currently leased by the Belfast Community Network, which provides twice-weekly food Resilience distribution via Potters Kitchen. The building also provides a drop-in opportunity for the local community. Belfast Community Network also provide a Social Worker on site to engage with the community.</p> <p><u>February 2023</u></p> <p>The use of the building continues with Potters Kitchen providing food resilience and drop opportunities for local residents to connect.</p>

<p>The collaborative response to deprivation in Northcote</p>	<p><u>February 2021</u></p> <p>The Neighbourhood Links group includes St Silas Church, Potters Way Church, Te Ora Hou, Northcote School, Redwood Library, Police, Northgate Community Services Trust, Salvation Army, Kāinga Ora, Papanui Baptist Church Community Services Freedom Trust and Christchurch City Council staff.</p> <p>The collective response of these organisations via the delivery of social supports including food distribution, family and whānau support, employment support and working with the most isolated and vulnerable within this high deprivation suburb continues to highlight the strength of interagency collaboration.</p> <p>The organisations actively support Northcote School with the delivery of the daily breakfast club and the homework club.</p> <p>The connectedness and sharing of experience, resources, and expertise between organisations continues to be a feature of the community organisations involved within Northcote and the wider Papanui Ward in response to the last two years of lockdowns and the current Omicron settings.</p> <p><u>February 2022</u></p> <p>As above, the Belfast Community Network has continued their long-standing commitment to Northcote by providing food and Social Work liaison at the Links Centre.</p> <p><u>February 2023</u></p> <p>The Neighbourhood Links group continues to provide the opportunity via the delivery of social supports including food distribution, family and whānau support, and working with the most isolated and vulnerable within this high deprivation suburb.</p> <p>As previously, the connectedness and sharing of experience, resources, and expertise continues to be a feature of the community organisations.</p>
<p>Strength of the Papanui Ward Community organisations</p>	<p><u>February 2021</u></p> <p>The main issue highlighted in the Papanui profile in 2014 in respect to community organisations was the lack of a “one” community within the Ward.</p> <p>In the following six years, the strength of the community organisations within the Ward is their ongoing commitment to collaboration. The peer support between</p>

	<p>organisations through for example the NorthWest Collective comprising of nine local community groups and the Northcote Stakeholders group comprising of up to 11 organisations has combined to support, develop, and share resources, and expertise with each other.</p> <p>This has engendered a unified response to the major issues confronting the Ward historically, currently, and into the future.</p> <p><u>February 2022</u></p> <p>As highlighted above, over the last seven years in respect of the strength of the Papanui Ward Community organisations and their ongoing commitment to collaboration continues to be a major feature of interconnectedness of the Wards community-based organisations.</p> <p><u>February 2023</u></p> <p>Again as highlighted above, the depth of collaboration, the willingness to share resources and expertise and the shared success of the groups work both individually and collectively over the last 8 years is testament to the levels of trust, inherent amongst the community organisations.</p>
<p>High Density Housing</p>	<p><u>February 2021</u></p> <p>The Community Board has received feedback from residents with regard to the effects of high-density housing on the local community in respect of local character, traffic and on-street parking. While precluded from Resource Management Act (RMA) processes, the Community Board noted that the Act is under national review.</p> <p><u>February 2022</u></p> <p>In October 2021, the government announced new intensification rules and speed-up of the Government's National Policy Statement on Urban Development. The proposed new law would allow buildings of up to three storeys on most city sites without the need for resource consent from August 2022. This would apply to landowners in Auckland, Hamilton, Wellington and Christchurch. The National Policy Statement on Urban Development means that by August 2023 Councils cannot hinder developments by banning height limits of less than six storeys and requiring car parking in urban areas.</p> <p><u>February 2023</u></p> <p>See below in the Intensification section.</p>

<p>Representation Review</p>	<p><u>February 2022</u></p> <p>Every six years local authorities are required, by the Local Electoral Act 2001 to review their representation arrangement. A representation arrangement reviews the total numbers of Councillors, boundaries of wards and constituencies.</p> <p>In 2021, the Local Government Commission determination agreed with the Council’s final proposal of including the Central Ward to the Waipapa Papanui-Innes Ward boundary.</p> <p>From the new electoral term, commencing in October 2022 the Central Ward will fall under the aegis of the renamed Waipapa Papanui-Innes-Central Community Board. The Central Ward will include the suburbs of Phillipstown and Charleston.</p> <p>A further result of the boundary changes will mean that suburb of Belfast and the major community organisation, the Belfast Community Network, will now “sit” within the Waimāero Fendalton-Waimairi-Harewood Ward.</p> <p><u>February 2023</u></p> <p>Although the Belfast Community Network now “sit” within the Waimāero Fendalton-Waimairi-Harewood Ward the organisation continue to hold the Lease for the Neighbourhood Links building in Redwood and continue to support the volunteer work of the Potters Kitchen who work out of the building with their community food distribution. Belfast Community Network will continue to play a vital role within the Northwest Collective.</p>
<p>Localised surface Flooding</p>	<p><u>February 2023</u></p> <p>The Community Board is aware of the community concern about localised surface flooding experienced in parts of the Board area and across the city caused by the record-breaking rain events of 2022, and indications that with climate change such events may become more frequent. What the Community Board has heard from residents is they seek assurance that; the drainage network is working and being maintained as effectively as it possibly can to drain the stormwater away as quickly as possible during and after significant rain events.</p> <p>The Board plans to advocate for the prioritisation and inclusion of required flood mitigation projects by identifying in the Board submission what options for flood mitigation represent the best value for money, prioritising community safety and wellbeing while recognising that some street flooding in significant rain</p>

	<p>events is part of a functional drainage network that avoids inappropriately creating property flooding downstream.</p> <p>In respect of intensification within the Papanui Ward flood issues may result from the shedding of water from hard concrete and asphalt.</p>
Intensification	<p><u>February 2023</u></p> <p>The wider community and the Community Board raised concerns that the community infrastructure may not be adequate to support the continual growth in the board area due to intensification. The concerns raised include the lack of amenities, community facilities, and recreational greenspace and the impact intensification will have on transport corridors and connecting transport networks.</p> <p>The Government has fast-tracked funding from the Infrastructure Acceleration Fund to support the transport and three waters infrastructure for approximately 1,400 houses to be built over the next seven years in the Cranford Basin area. Housing will include the private sector, public housing, and affordable housing.</p>
Downstream Effects Management Plan (DEMP)	<p><u>February 2023</u></p> <p>The completion of the Christchurch Northern Corridor has seen changes to the transport corridor along Cranford Street and the surrounding roads. The Board will continue to engage with the support projects community through ongoing projects due to the effects of DEMP and to support the community manage the impacts of the additional vehicles using this corridor.</p>
Papanui Youth Facility	<p><u>February 2023</u></p> <p>The Board has heard from a local youth organisation in the Papanui area that recognises that there is a gap in facilities for young people. In 2017 a report was requested from Council staff about the possibility of a new skate park in Papanui. In the Long Term Plan there is funding on budget for the development of a new recreation space such as skate parks and/or basketball courts in the Papanui/Redwood area as well as several other places across the city.</p> <p>Further investigation is required, working alongside young people to develop what a new youth space would look like, this may include a Youth Audit as part of the</p>

	<p>initial engagement with Youth in determining youth priorities.</p> <p>A Youth Audit is a tool where young people audit places and spaces on five key factors, safety, ascetics, accessibility, well-resourced, and youth friendliness.</p> <p>Council staff would engage with local young people to see where in Papanui they would like a potential youth space, using the youth audit principles.</p>
--	--