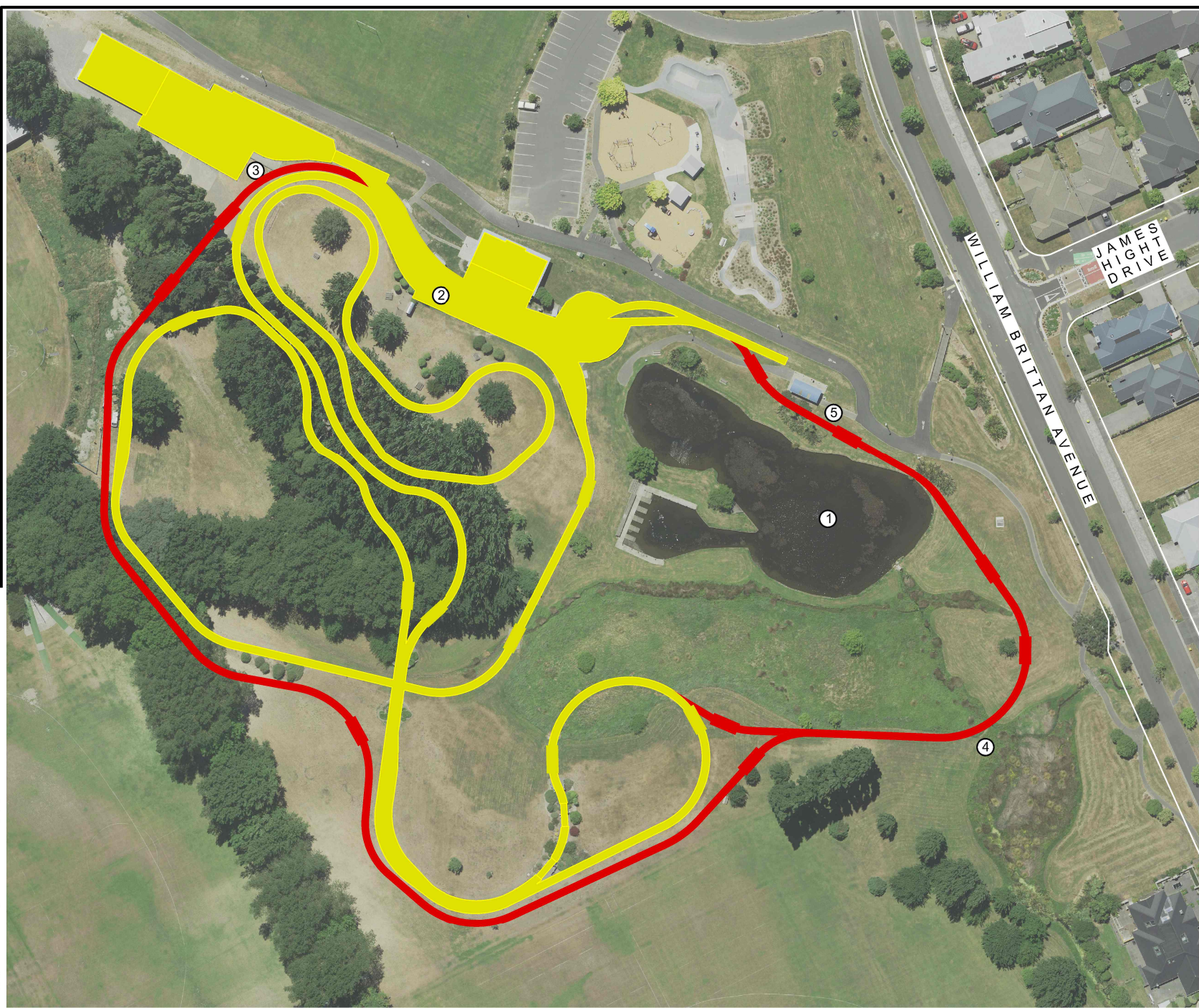




© Copyright Christchurch City Council / Aerial Photography Creative Commons Attribution 3.0 New Zealand License

Original size mm
100
50
30
10
0



KEY FEATURES OF PROPOSAL

-  Existing rail line with existing crossing points
-  New rail line with new crossing points
- ① Formalise CSMEE use of pond for scheduled sessions
- ② New stairs
- ③ New steaming bay area
- ④ New rail bridge
- ⑤ New landscape planting

