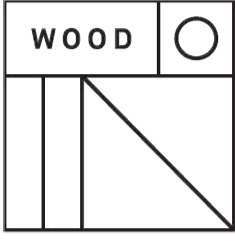


Youth Hub

Landscape plans

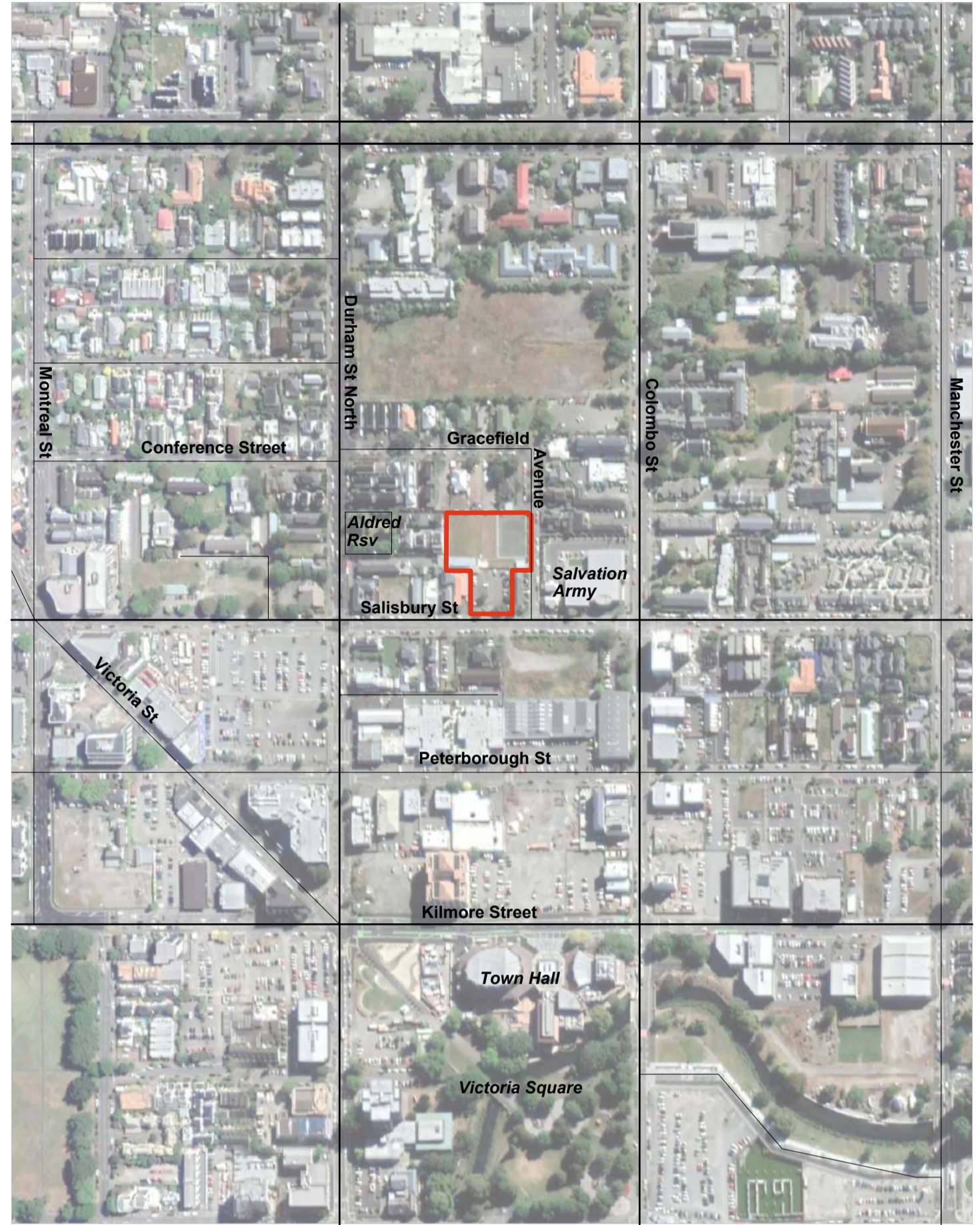
The Youth Hub Trust Te Hurihanga o Rangatahi
 109 Salisbury Street, Christchurch



Stage/Job # **J0086.17 - YouthHub**
 Issue **Consent Issue**
 Revision No. **7**

Contents

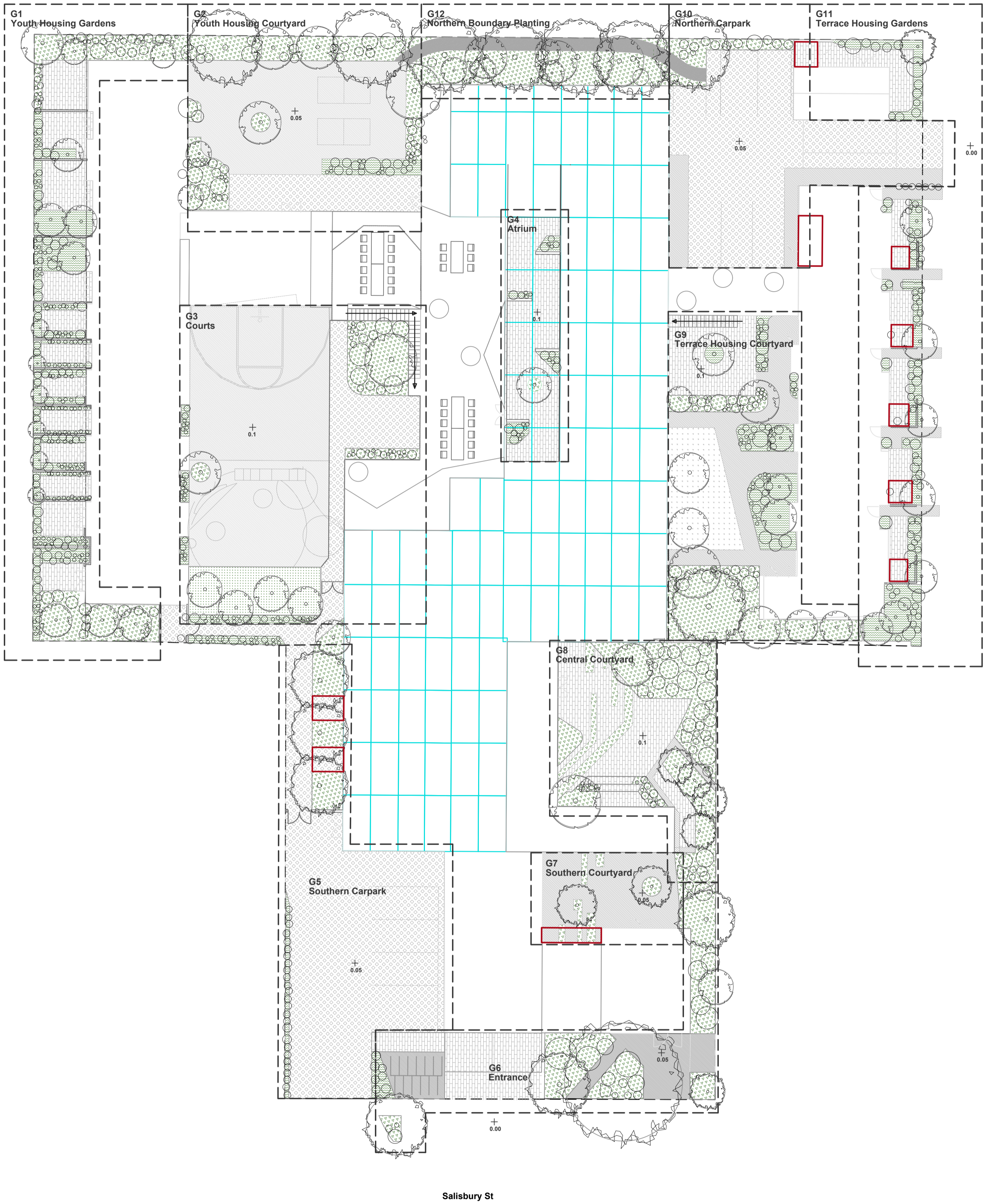
Page 1 -	Cover and Site location
Page 2 -	L102 Concept plan - Ground level
Page 3 -	L103 Concept plan - Terraces level
Page 4 -	Landscape concept plan details
Page 5 -	L201 South Elevation
Page 6 -	L202 East Elevation
Page 7 -	L203 North Elevation
Page 8 -	L204 West Elevation
Page 9 -	L04 Ground level Landscape Uses
Page 10 -	L05 Upper level Landscape Uses
Page 11 -	L06 Combined Landscape Uses



L101 Site location plan

1:4000 @ a2



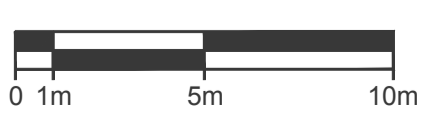


Gracefield Avenue

Salisbury St

Not for construction purposes - consent issue

L101 | Concept Plan
Ground level



Youth Hub
Landscape plans

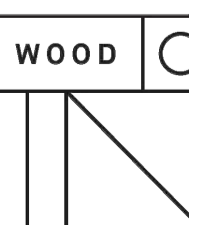
The Youth Hub Trust
Te Hurihanga o Rangatahi

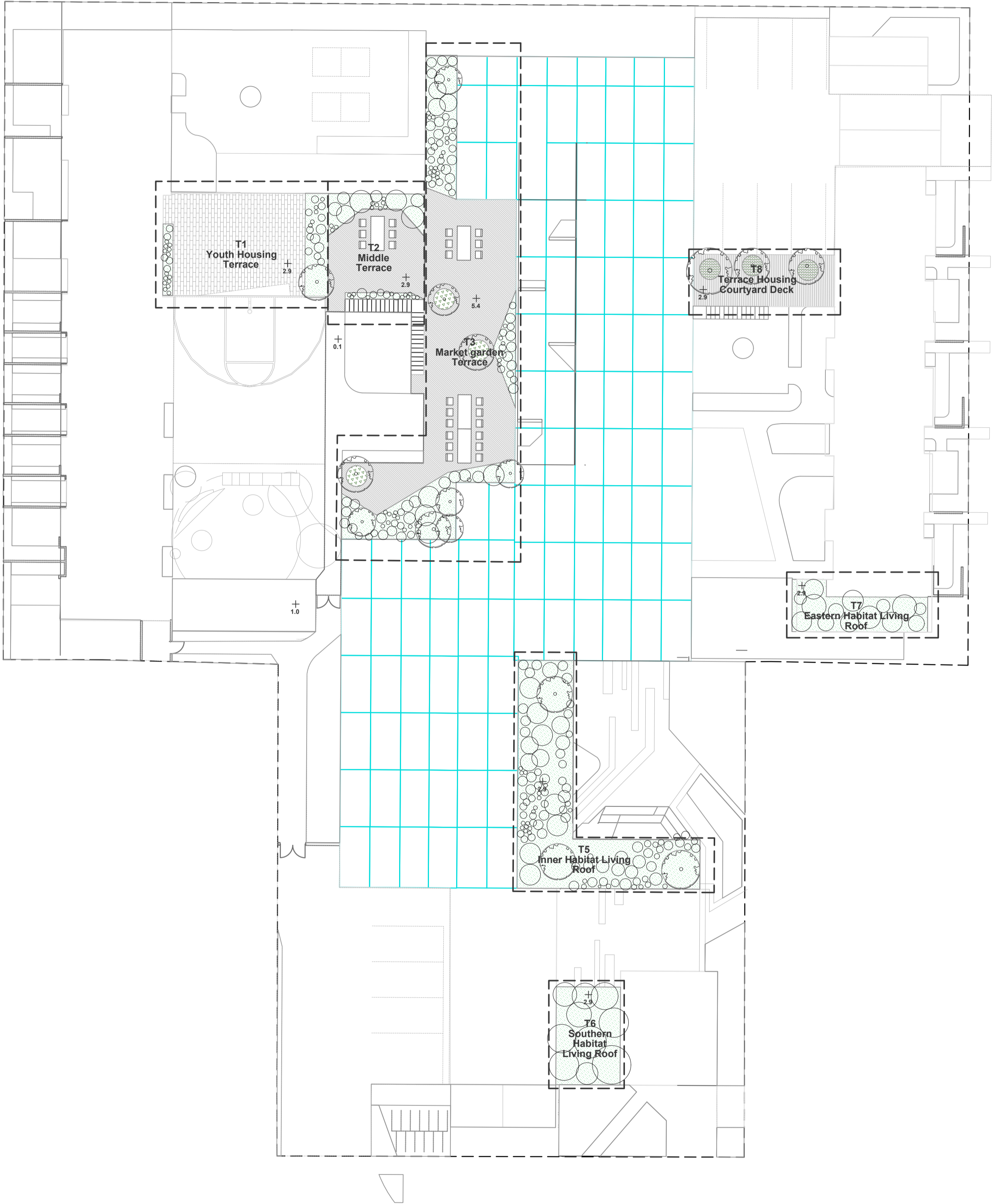
Stage/Job # **J0086.17 - YouthHub**
 Issue **Consent Issue**
 Revision No. **7**

Drawing Date 10/13/2020
 Scale 1 : 200
 Page format A2
 Drawn by Steffan Kraberger

Legend

Low native shrubs	Native living roof (invertebrate habitat)
Medium native trees/shrubs	Concrete
Mixed exotic/native shrub garden	Paving
Market/Vegetable Garden	Decking
Permeable paving with groundcover	Waste bin storage areas
Grass	





Not for construction purposes - consent issue

L102 | Concept Plan
Upper levels



Youth Hub
Landscape plans

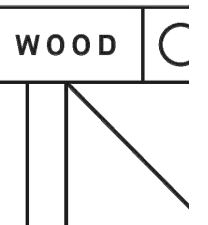
The Youth Hub Trust
Te Hurihanga ō Rangatahi

Stage/Job # **J0086.17 - YouthHub**
Issue **Consent Issue**
Revision No. **7**

Drawing Date 10/13/2020
Scale 1 : 200
Page format A2
Drawn by Steffan Kraberger

Legend

- | | |
|-----------------------------------|---|
| Low native shrubs | Native living roof (invertebrate habitat) |
| Medium native trees/shrubs | Concrete |
| Mixed exotic/native shrub garden | Paving |
| Market/Vegetable Garden | Decking |
| Permeable paving with groundcover | Grass |



Landscape concept plan details

G1 Youth Housing Private Gardens

- 1.6m brick nib walls lead out to boundary at the intersection of each adjoining flat, dividing the private gardens.
- Planting within this framework is anchored by a series of small deciduous trees, including edible Fig, Kousoa dogwood, Louis Van Houtte Elm, and Crab apple.
- Underplanted with low care native evergreen shrubs, particularly on north side of courtyard (in shade). Sunny south side of courtyard planted with hardy berry shrubs such as NZ cranberry and blueberries.

G2 Youth Housing Courtyard

- Acoustic fence along boundary, with dense native shrub plantings behind, using predominantly large (2-4m) small leaved shrubs.
- The two trees directly north of the courtyard are deciduous ash to retain light through winter, with deciduous fruit trees in the center gardens of the courtyard. A large evergreen black beech *Fuscospora solandri* structures the northeast corner and ties into the large trees along the northern boundary of the main building as shown on the plan as G12.

G3 Courts

- Large non-covered multi-sport space, surfaced using a variety of colored concretes with some wet-pour areas.
- Surrounding pathways and plantings tie the broad open area into the building context, with soft surfacing and a number of leafy green gardens, focusing on a close combination of *Coprosma repens*, *Coprosma lucida*, *Griselinia littoralis*, and *macropiper excelsum* in shadier areas. At the south of the courts is a grassed area with four Marbleleaf grown to have lifted and interconnected canopies.

G4 Atrium

- Intimate paved alleyway with low nib wall dividers to create seating and rest areas alongside the general thoroughfare.
- Use of effective indoor exotics and natives, including *Fuschia procumbens* and *Meryta sinclairii*.
- Elevated walkways above to allow alternative thoroughfare and breakout for upper tenancies.

G5 Southern Carpark

- Permeable paving using 'grass pavers' with creeping groundcovers throughout such as creeping thyme; or alternative permeable paving solution such as Firth Surepave permeable.
- The carpark will be framed with a narrow fenceline planting of climbing NZ Jasmine (*Parsonsia heterophylla*), with *Fuschia procumbens* at the base. Other plantings along the south edge with the small triangular inset planter, and the existing street side planter with use a combination of low native shrubs including *Olearia nummularifolia*, *Teucrium parvifolium*, *Pseudowintera colorata*.

G6 Entrances

- Retention of large maple and street tree.
- Composed native shrub plantings separate carpark, main entrance and cafe entrance. Use of plants such as *Olearia nummularifolia*, *Teucrium parvifolium* etc.

G7 Southern courtyard

- An intimate courtyard to service the cafe, with edible plantings and referencing the materials of the central courtyard.

G8 Inner Courtyard

- The inner courtyard is focused on creating a sense of sanctuary.
- A series of umbrella-form trees (lifted canopies) creating a feeling of soft enclosure, further framed with planter beds of swathed native shrubs ramping up the walls of the courtyard.
- Native groundcover bands set into the pavement further the grounding of the pavement.
- A sunken courtyard to the east is framed under 2-3 umbrella canopy trees, creating a subtle gateway into the sanctuary area.

G9 Terrace Housing Courtyard

- A series personal small gardens line the east wall against the housing with hardy berry shrubs such as fejoa, NZ cranberry, blueberries, and *Fuschia exortica*.
- A feature *Metrosideros umbellata* (southern rata) sits against the west boundary (central) building, while the large scale of a *Fuscospora solandri* (black beech) in the south-west corner masks the scale of the central building, as well as enclosing the southern edge courtyard.
- A vegetable garden services the terrace housing, centered with two large prunus (a pear and an apple tree).

G10 Northern carpark

- Permeable paving using 'grass pavers' with creeping groundcovers throughout such as creeping thyme; or alternative permeable paving solution such as Firth Surepave permeable. Surface treatment change to exposed aggregate pathway through entrance archway from Gracefield Avenue.
- Carpark framed with a significant body of lush hardy evergreen natives such as *Olearia* spp., *Pseudopanax laetum*, or *Dodonaea viscosa*, and a feature black beach in the Northwest corner.
- Exposed aggregate pathway continues across to entrance, and ties into bike sheds on the east and west sides of the carpark.
- Brickwall extends along northern boundary before changing into paling at the main building.

G11 Terrace Housing gardens

- Feature brick walls lead out to boundary at the intersection of each adjoining flat, defining the terrace character.
- Planting within this framework is anchored by a series of feature trees (e.g. *Olearia paniculata* (Akiraho) & *Sophora microphylla* (Kowhai)). Classical exotic shrubs such as viburnum and azalea's ramp down between these frames to accentuate the terrace house intervals.
- Enclosed courtyard with edge planting and brick wall at North/East Corner, servicing caretaker house.

G12 Northern boundary of main block

- Five large trees screen the main block on the northern boundary embodying the older plain ecosystem of the site. All evergreen natives, these will consist of *Prumnopitys ferruginea* (Miro), *Carpodetus serratus* (Putaputaweta), and *Elaeocarpus hookerianus* (Pokaka).

T1 Youth Housing Terrace

- An intimate terrace servicing the private courtyard and residence. Raised living roof garden bed edges on the eastern side provide privacy, while tables and washing line on the west provide function. A movie projector is setup against the south wall.

T2 and T3 Market Garden Terraces

- A close combination of habitat living roofs with roof top seating and socializing areas set amongst the glass houses

T4 Native habitat living roof

- Livingroof build-up system with planting and structures to create and protect a gecko and invertebrates habitat.

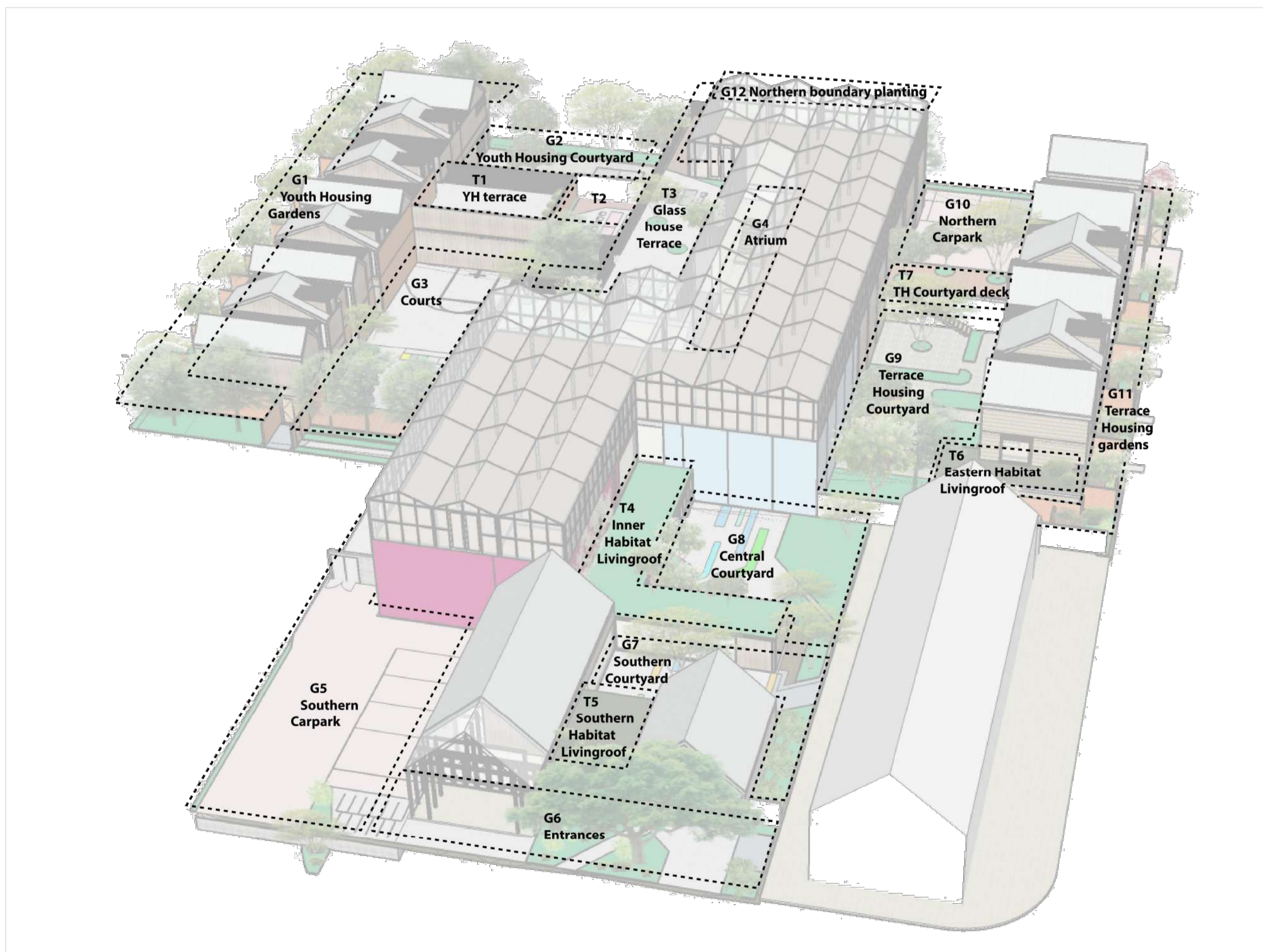
T5 and T6 Native habitat living roof (Large plantings)

- Testing the capacity of the livingroof build-up system to encourage large native plantings as a feature for the entrances, while creating habitat.

T7 Terrace Housing terrace

- Small social dwelling space, extending on Terrace Housing Courtyard while creating a separate sense of space. Focuses on a sense sanctuary 'up among the tree tops'.

- Note all native trees (approximately 35+) as shown on concept plans must not be less than 1.5 metres high at the time of planting



L501 Concept zones diagram

Planting schedule - Page 1

G1 - Youth Housing Gardens

Species	Common name	Quantity	Planted Pot size	3 year height/width	6 year height/width	Mature height/width
Cornus kousa	Korean dogwood		6 10L (1m)	2/1m	4/1.5m	9/4m
Ulmus procer 'Louis van Houtte'	Golden elm		6 25L (1.5m)	2/1m	4/1.5m	9/6m
Malus 'Jack Humm'	Fruiting crabapple		6 10L (1m)	2/1m	3/3m	4/3m
Anemone sylvestris	Snowdrop anemone	20	PB1 (0.1m)	1/0.5m	1/0.5m	1/0.5m
Pittosporum 'Berger'	Pitto ball	40	PB3 (0.5m)	1/1m	1/1m	1/1m
Libertia ixiodes	Libertia	50	PB1 (0.25m)	0.5/0.1m	0.5/0.1m	0.5/0.1m
Coprosma repens	Taupata	25	PB3 (0.5m)	1m/1.5m	1m/1.5m	1m/1.5m
Olearia cheesemanii	Daisy bush	20	PB3 (0.5m)	1m/1m	2/2m	2/2m
Olearia nummulariifolia	Hard-leaved tree daisy	20	PB3 (0.5m)	1m/1m	2/3m	2/3m
Viburnum opulus	Snow ball bush	15	PB3 (0.5m)	1m/1m	2/2m	2/2m
Total			208			

G2 - Youth Housing Courtyard

Species	Common name	Quantity	Planted Pot size	3 year height/width	6 year height/width	Mature height/width
Fraxinus velutina	Arizona ash	2	10L (2m)	2/1m	4/2m	9/6m
Olearia avicenniaefolia	Mountain ake-ake	3	PB3 (0.5m)	2m/1m	3/3m	4/3m
Olearia nummulariifolia	Hard-leaved tree daisy	10	PB3 (0.5m)	1m/1m	2/3m	2/3m
Coprosma viridescens		15	PB3 (0.5m)	1m/0.5m	2/1m	3/1m
Raukuaa anomalus		12	PB3 (0.5m)	1m/1m	1/1m	1m/1m
Olearia cheesemanii	Daisy bush	15	PB3 (0.5m)	1m/1m	2/2m	2/2m
Fuschia procumbens	creeping fuschia	15	PB1 (0.25m)	0.1m/1m	0.1/2m	0.1m/2m
Apple 'belle de boskoop'	Apple belle de boskoop	1	PB3 (0.5m)	2m/1m	3/1.5m	5/4m
Total			73			

G3 - Courts

Species	Common name	Quantity	Planted Pot size	3 year height/width	6 year height/width	Mature height/width
Coprosma repens	Taupata	15	PB3 (0.5m)	1m/1.5m	1/1.5m	1m/1.5m
Grisselinia littoralis 'ardmore emerald'	Kapuka	15	PB3 (0.5m)	2m/1m	3/1.5m	4/2m
Olearia nummulariifolia	Hard-leaved tree daisy	10	PB3 (0.5m)	1m/1m	2/3m	2/3m
Macropiper excelsum	Kawakawa	15	PB3 (0.5m)	1m/0.5m	2/1m	4/4m
Coprosma lucida	Shining Karamu	15	PB3 (0.5m)	2m/1m	2/2m	5m/2m
Carpodetus serratus	Putaputaweta	4	25L (2m)	2/1m	6/3m	10/4m
Total			74			

G4 - Atrium

Species	Common name	Quantity	Planted Pot size	3 year height/width	6 year height/width	Mature height/width
Meryta sinclairii	Puka	10	PB3 (0.5m)	2m/1m	3m/2m	5m/5m
Fuschia procumbens	creeping fuschia	35	PB1 (0.25m)	0.1m/1m	0.1/2m	0.1m/2m
Total			45			

G5 - Southern Carpark

Species	Common name	Quantity	Planted Pot size	3 year height/width	6 year height/width	Mature height/width
Meryta sinclairii	Puka	10	PB3 (0.5m)	2m/1m	3m/2m	5m/5m
Fuschia procumbens	creeping fuschia	35	PB1 (0.25m)	0.1m/1m	0.1/2m	0.1m/2m
Total			45			

G6 - Entrances

Species	Common name	Quantity	Planted Pot size	3 year height/width	6 year height/width	Mature height/width
Olearia nummulariifolia	Hard-leaved tree daisy	25	PB3 (0.5m)	1m/1m	2/3m	2/3m
Teucrium parvifolium		25	PB3 (0.5m)	1m/1m	1/1m	1m/1m
Libertia peregrinans	NZ Iris	15	2L (0.5m)	1m/1m	1/1m	1m/1m
Libertia ixiodes	Libertia	20	PB1 (0.25m)	0.5/0.1m	0.5/0.1m	0.5/0.1m
Scleranthus biflorus	NZ Cushion plant	15	2L (0.5m)			
Fuschia procumbens	creeping fuschia	10	PB1 (0.25m)	0.1m/1m	0.1/2m	0.1m/2m
Acaena anserinifolia	NZ bidibidi	10	2L (0.5m)	0.2/0.2m	0.2/0.2m	0.2/0.2m
Muehlenbeckia axillaris	Creeping muehlenbeckia	10	PB1 (0.25m)	0.2/0.2m	0.2/0.2m	0.2/0.2m
Anamanthele lessoniana	Gossamer Grass	6	RX90	2m/1m	2m/1m	2m/1m
Chionochloa rubra	Red Tussock	12	2L (0.5m)	1.5m/0.5m	1.5m/0.5m	1.5m/0.5m
Chionochloa flavicans	Miniature toitoi	5	2L (0.5m)	1.5m/0.5m	1.5m/0.5m	1.5m/0.5m
Carex testacea	Carex testacea	12	RX90	1m/0.5m	1m/0.5m	1m/0.5m
Carex Coman 'Bronze'	Carex Coman 'Bronze'	5	RX90	0.3m/0.3m	0.3m/0.3m	0.3m/0.3m
Carex Coman 'Frosted tips'	Carex Coman 'Frosted tips'	5	RX90	0.3m/0.3m	0.3m/0.3m	0.3m/0.3m
Brachyglottis monroi	Monro's daisy	2	PB3 (0.5m)	1m/1m	2/3m	2/3m
Pseudowintera colorata	Horipito	2	PB3 (0.5m)	1m/1m	2/1m	3/2m
Total			179			

G7 - Southern Courtyard

Species	Common name	Quantity	Planted Pot size	3 year height/width	6 year height/width	Mature height/width
Cornus kousa	Korean dogwood	1	10L (1m)	2/1m	4/1.5m	9/4m
Ulmus procer 'Louis van Houtte'	Golden elm	1	25L (1.5m)	2/1m	4/1.5m	9/6m
Total			2			

G8 - Inner Courtyard

Species	Common name	Quantity	Planted Pot size	3 year height/width	6 year height/width	Mature height/width
Olearia nummulariifolia	Hard-leaved tree daisy	10	PB3 (0.5m)	1m/1m	2/3m	2/3m
Teucrium parvifolium		25	PB3 (0.5m)	1m/1m	1/1m	1m/1m
Muehlenbeckia axillaris	Creeping muehlenbeckia	10	PB1 (0.25m)	0.2/0.2m	0.2/0.2m	0.2/0.2m
Brachyglottis monroi	Monro's daisy	2	PB3 (0.5m)	1m/1m	2/3m	2/3m
Pseudowintera colorata	Horipito	2	PB3 (0.5m)	1m/1m	2/1m	3/2m
Heliohebe hulkeana		15	PB3 (0.5m)	1m/1m	2/1m	3/2m
Olearia avicenniaefolia	Mountain ake-ake	5	PB3 (0.5m)	2m/1m	3/3m	4/3m
Leptinella dioca	creeping fuschia	30	PB1 (0.25m)	0.1m/1m	0.1/2m	0.1m/2m
Sophora microphylla	Kowhai	2	25L (2m)	2/1m	3/1.5m	7/4m
Total			101			

Planting schedule - Page 2

G9 - Terrace housing Courtyard

Species	Common name	Quantity	Planted Pot size	3 year height/width	6 year height/width	Mature height/width
Acca sellowiana	Fejoa	10	PB8 (1m)	1m/1m	3/3m	3/3m
Ugni molinae	NZ Cranberry	25	PB3 (0.5m)	1m/1m	1/1m	1m/1m
Fuscospora solandri	Black beech	1	25L (2m)	2/1m	4/2m	9/6m
Metrosideros umbellata	Southern rata	1	25L (2m)	1.5/1m	2/1m	15/6m
Blueberry		5	PB3 (0.5m)	1m/1m	1/1m	1m/1m
Brachyglottis monroi	Monro's daisy	10	PB3 (0.5m)	1m/1m	2/3m	2/3m
Pseudowintera colorata	Horipito	15	PB3 (0.5m)	1m/1m	2/1m	3/2m
Heliohebe hulkeana		10	PB3 (0.5m)	1m/1m	2/1m	3/2m
Apple 'belle de boskoop'	Apple belle de boskoop	1	PB8 (1m)	2m/1m	3/1.5m	5/4m
Olearia odorata	Scented daisy	5	PB8 (1m)	1m/1m	2/3m	2/3m
Pear 'Beurre Bosc'		1	PB8 (1m)	2m/1m	3/1.5m	6/3m
84						

G10 - Northern Carpark

Species	Common name	Quantity	Planted Pot size	3 year height/width	6 year height/width	Mature height/width
Olearia avicenniaefolia	Mountain ake-ake	3	PB3 (0.5m)	2m/1m	3/3m	4/3m
Dedonia viscosa	Akeake	3	PB3 (0.5m)	2m/1m	3/3m	4/3m
Pseudopanax laetus	Five finger	5	PB3 (0.5m)	2m/1m	4/3m	5/3m
Lophomyrtus obcordata	Rohuhu (NZ Myrtle)	3	PB3 (0.5m)	1m/1m	2/1m	3/2m
Olearia odorata	Scented daisy	3	PB8 (1m)	1m/1m	2/3m	2/3m
Fuscospora solandri	Black beech	1	25L (2m)	2/1m	4/2m	9/6m
18						

G11 - Terrace Housing gardens

Species	Common name	Quantity	Planted Pot size	3 year height/width	6 year height/width	Mature height/width
Sophora microphylla	Kowhai	5	25L (2m)	2/1m	3/1.5m	7/4m
Olearia paniculata	Akiraho - Golden Ake Ake	5	PB3 (0.5m)	2m/1m	4/3m	5/3m
Anemone sylvestris	Snowdrop anemone	30	PB1 (0.1m)	1/0.5m	1/0.5m	1/0.5m
Viburnum opulus	Snow ball bush	10	PB3 (0.5m)	1m/1m	2/2m	2/2m
Pittosporum 'Berger'	Pitto ball	30	PB3 (0.5m)	1m/1m	1m/1m	1m/1m
Nandina domestica	Heavenly bamboo	30	PB3 (0.5m)	1m/1m	1m/1m	1m/1m
Lavandula dentata	French Lavender	30	PB1 (0.1m)	1/0.5m	1/0.5m	1/0.5m
Heuchera	Coral Bells	20	PB1 (0.1m)	0.5/0.5m	0.5/0.5m	0.5/0.5m
160						

G12 - Northern boundary of main block

Species	Common name	Quantity	Planted Pot size	3 year height/width	6 year height/width	Mature height/width
Fuscospora solandri	Black beech	1	25L (2m)	2/1m	4/2m	9/6m
Carpodetus serratus	Putaputaweta	1	25L (2m)	2/1m	6/3m	10/4m
Prumnopitys ferruginea	Miro	1	25L (2m)	2/1m	2/2m	18/7m
Elaeocarpus hookerianus		1	25L (2m)	2/1m	6/3m	12/8m
Olearia nummulariifolia	Hard-leaved tree daisy	10	PB3 (0.5m)	1m/1m	2/3m	2/3m
Teucrium parvifolium		10	PB3 (0.5m)	1m/1m	1/1m	1m/1m
24						

T1 - Youth Hub terrace

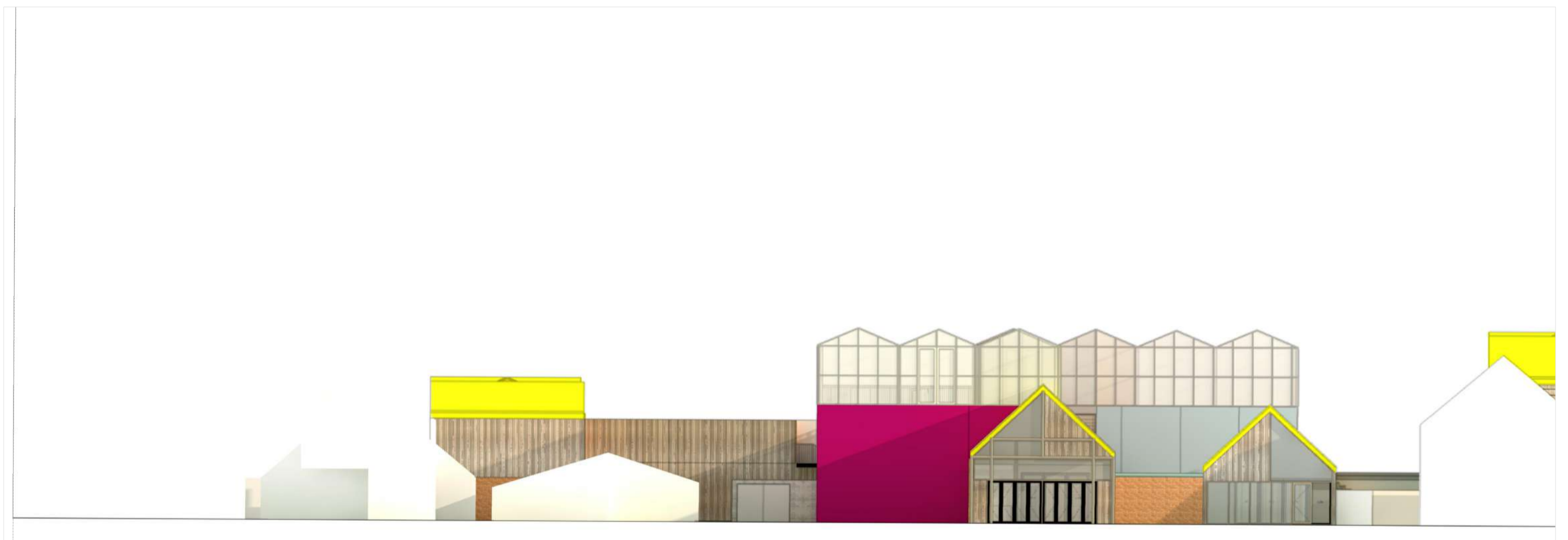
Species	Common name	Quantity	Planted Pot size	3 year height/width	6 year height/width	Mature height/width
Heliohebe hulkeana		10	PB3 (0.5m)	1m/1m	2/1m	3/2m
Pseudopanax laetus	Five finger	5	PB3 (0.5m)	2m/1m	4/3m	5/3m
Muehlenbeckia axillaris	Creeping muehlenbeckia	20	PB1 (0.25m)	0.2/0.2m	0.2/0.2m	0.2/0.2m
Teucrium parvifolium		10	PB3 (0.5m)	1m/1m	1/1m	1m/1m
45						

T4, T5, T6 - Living roofs

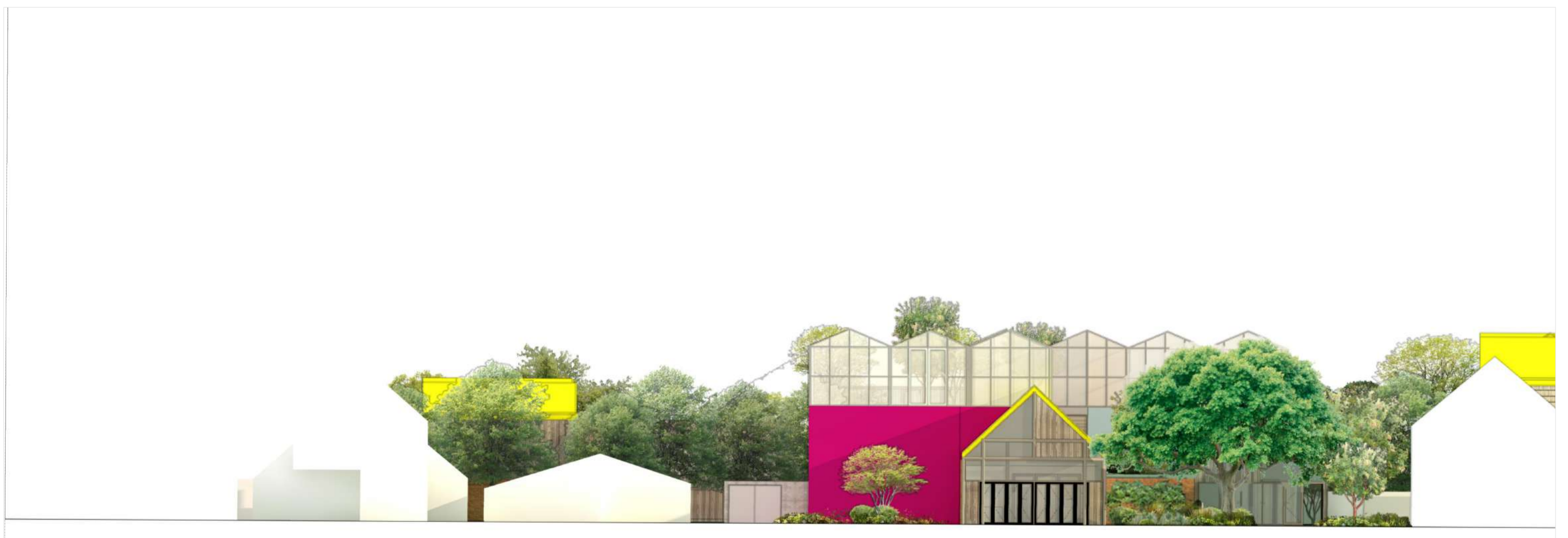
Species	Common name	Quantity	Planted Pot size	3 year height/width	6 year height/width	Mature height/width
Celmisia mackau	Banks Peninsula Daisy	30	PB1 (0.25m)	0.3/0.4m	0.3/0.4m	0.3/0.4m
Astelia fragrans	Kakaha	10	PB1 (0.25m)	1/1.5m	1/1.5m	1/1.5m
Libertia ixioides	NZ Iris	50	PB1 (0.25m)	0.4m/0.2m	0.4m/0.2m	0.4m/0.2m
Poa colensoi	Blue tussock	60	PB1 (0.25m)	0.3/0.3m	0.3/0.3m	0.3/0.3m
Carex comans	Maurea	20	PB1 (0.25m)	0.3/0.3m	0.3/0.3m	0.3/0.3m
Poa cita	Poa	80	PB1 (0.25m)	0.4m/1m	0.4m/1m	0.4m/1m
Anemanthele lessoniana	Gossamer Grass	80	PB1 (0.25m)	0.8m/1m	0.8m/1m	0.8m/1m
Meliclytus alpinus	Porcupine bush	40	PB1 (0.25m)	1m/0.5m	1m/0.5m	1m/0.5m
Olearia adenocarpa	-	15	PB1 (0.25m)	0.8m/1m	0.8m/1m	0.8m/1m
Helichrysum lanceolatum	Ninia	10	PB1 (0.25m)	1.5/1m	1.5/1m	1.5/1m
Leptinella filiformis		20	PB1 (0.25m)	0.01/1m	0.01/1m	0.01/1m
Pimelea oreophila		15	PB1 (0.25m)	0.15/1m	0.15/1m	0.15/1m
Muehlenbeckia axillaris	Pohuehue	80	PB1 (0.25m)	0.15/1m	0.15/1m	0.15/1m
Parsonsia capsularis	Kaiwhiria	20	PB1 (0.25m)	0.2/2m	0.2/2m	0.2/2m
Clematis marata	-	10	PB1 (0.25m)	0.8/2m	0.8/2m	0.8/2m
Raoulia hookeri	Scabweed	30	PB1 (0.25m)	0.01/0.3m	0.01/0.3m	0.01/0.3m
Raoulia australis	Scabweed	40	PB1 (0.25m)	0.01/1m	0.01/1m	0.01/1m
Carmichaelia kirkii	climbing broom, Kirk's broom	10	PB1 (0.25m)	1.5/2m	1.5/2m	1.5/2m
Pittosporum anomalum		15	PB1 (0.25m)	1.2/1m	1.2/1m	1.2/1m
Acaena buechananii	Piripiri	20	PB1 (0.25m)	0.01/1m	0.01/1m	0.01/1m
Acaena anserinifolia	Hutiwai	20	PB1 (0.25m)	0.15/1m	0.15/1m	0.15/1m
Scandia geniculata		10	PB1 (0.25m)	2/1m	2/1m	2/1m
Heliohebe lavaudiana	Banks Peninsula sun hebe	50	PB1 (0.25m)	0.25/0.25m	0.25/0.25m	0.25/0.25m
735						

T7 - TH Courtyard deck

Species	Common name	Quantity	Planted Pot size	3 year height/width	6 year height/width	Mature height/width
Sophora microphylla	Kowhai	2	25L (2m)	2/1m	3/1.5m	7/4m
Muehlenbeckia axillaris	Creeping muehlenbeckia	20	PB1 (0.25m)	0.2/0.2m	0.2/0.2m	0.2/0.2m
22						

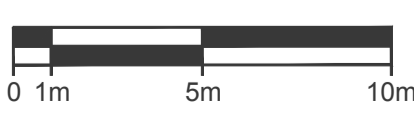

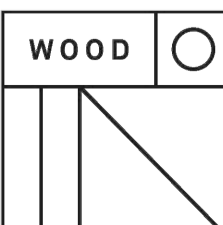


L201.1 South Elevation - Proposed Buildings



L201.2 South Elevation - Proposed Buildings & Landscape

Not for construction purposes - consent issue

<p>L201 South Elevation Salisbury St</p>  	<p>Youth Hub Landscape plans</p> <hr/> <p>The Youth Hub Trust Te Hurihanga ō Rangatahi</p>	<p>Stage/Job # J0086.17 - YouthHub Issue Consent Issue Revision No. 7</p> <hr/> <p>Drawing Date 10/13/2020 Scale 1 : 200 Page format A2 Drawn by Steffan Kraberger</p>	<p>Legend</p> 
--	---	---	---



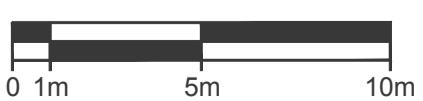
L202.1 East Elevation - Buildings only



L202.2 East Elevation - Landscape and Buildings

Not for construction purposes - consent issue

L202 | East Elevation
Gracefield Av



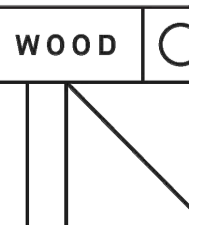
Youth Hub
Landscape plans

The Youth Hub Trust
Te Hurihanga o Rangatahi

Stage/Job # **J0086.17 - YouthHub**
Issue **Consent Issue**
Revision No. **7**

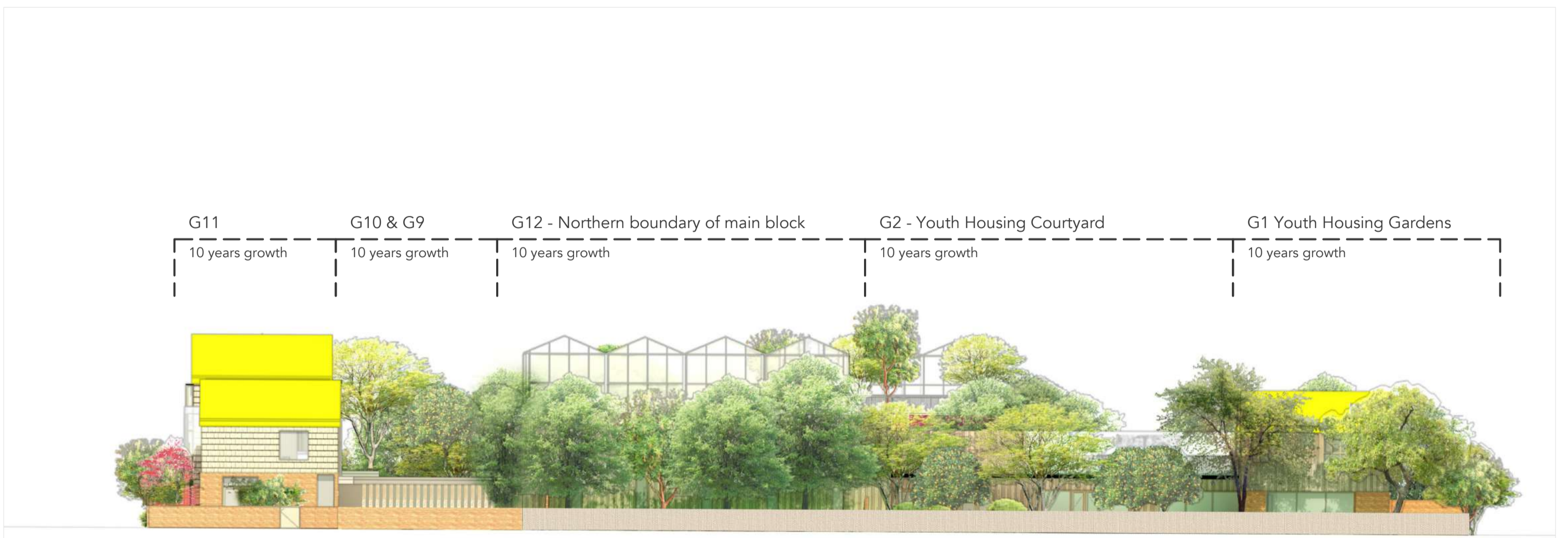
Drawing Date 10/13/2020
Scale 1 : 200
Page format A2
Drawn by Steffan Kraberger

Legend



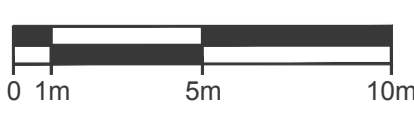

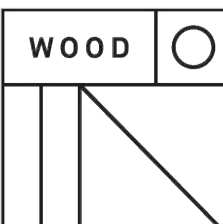


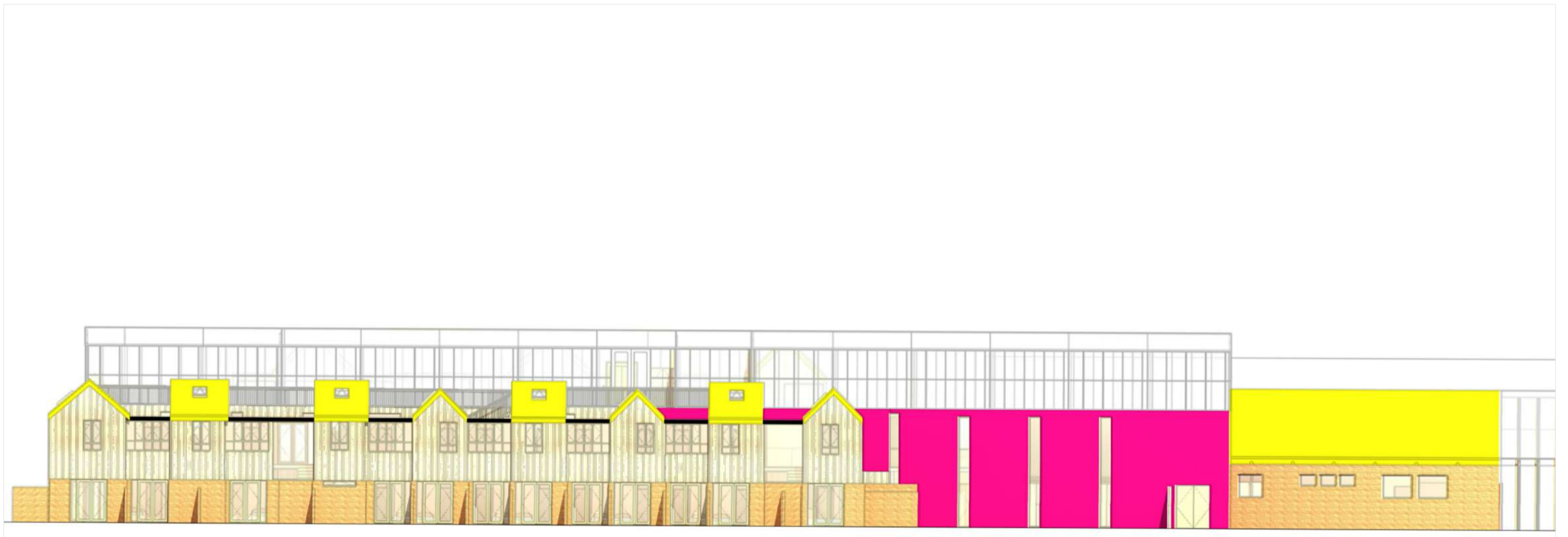
L203.1 North Elevation - Buildings only



L203.2 North Elevation - Landscape and Buildings

Not for construction purposes - consent issue

<p>L203 North Elevation Gracefield Av Nrth</p>  	<p>Youth Hub Landscape plans</p> <p>The Youth Hub Trust Te Hurihanga ō Rangatahi</p>	<p>Stage/Job # J0086.17 - YouthHub Issue Consent Issue Revision No. 7</p> <hr/> <p>Drawing Date 10/13/2020 Scale 1 : 200 Page format A2 Drawn by Steffan Kraberger</p>	<p>Legend</p> 
--	---	---	---



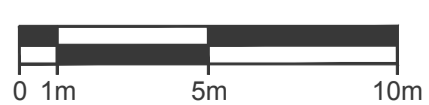
L204.1 West Elevation - Buildings only



L204.2 West Elevation - Landscape and Buildings

Not for construction purposes - consent issue

L204 | West Elevation
Internal



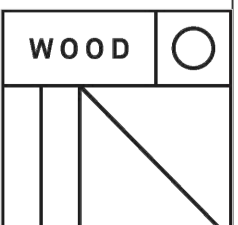
Youth Hub
Landscape plans

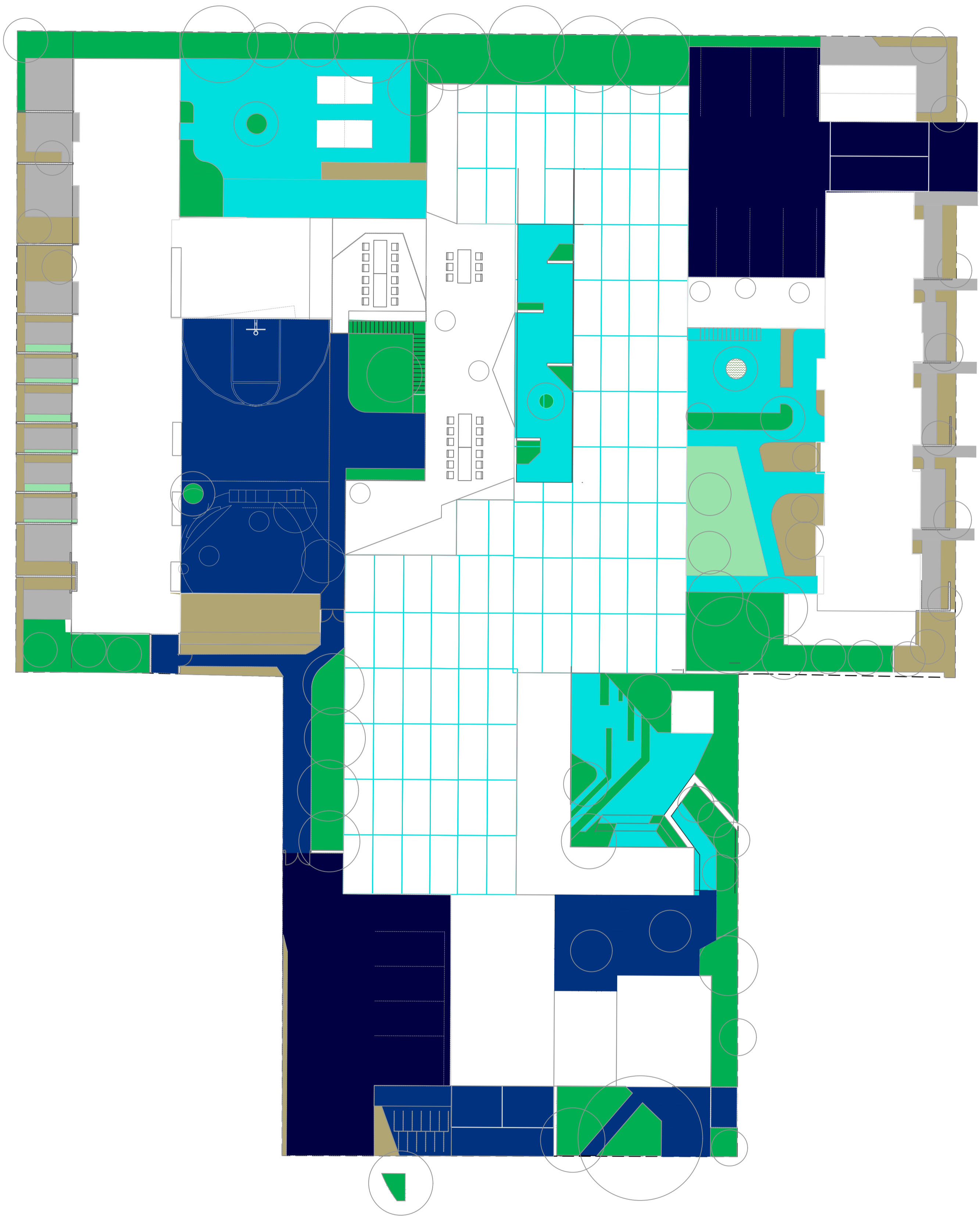
The Youth Hub Trust
Te Hurihanga ō Rangatahi

Stage/Job # **J0086.17 - YouthHub**
Issue **Consent Issue**
Revision No. **7**

Drawing Date 10/13/2020
Scale 1 : 200
Page format A2
Drawn by Steffan Kraberger

Legend



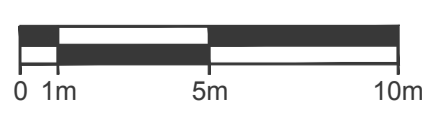


Not for construction purposes - consent issue

L104 | Landscape Uses Plan
Ground level

Youth Hub
Landscape plans

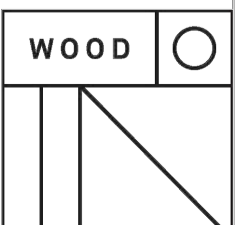
The Youth Hub Trust
Te Hurihanga ō Rangatahi



Stage/Job # **J0086.17 - YouthHub**
 Issue **Consent Issue**
 Revision No. **7**

Drawing Date 10/13/2020
 Scale 1 : 200
 Page format A2
 Drawn by Steffan Kraberger

Legend	
Private Courtyard (Hardscape) - 165m ²	Native garden, trees & habitats - 463m ²
Communal spaces (Hardscape) - 414m ²	Mixed exotic/native gardens - 182m ²
Public Spaces (Hardscape) - 410m ²	Orchard/Garden - 43m ²
Permeable paver carpark - 429m ²	





Not for construction purposes - consent issue

L105 | Landscape uses plan
Upper levels

Youth Hub
Landscape plans

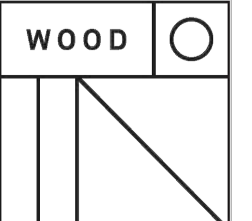
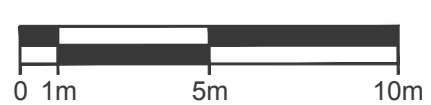
The Youth Hub Trust
Te Hurihanga ō Rangatahi

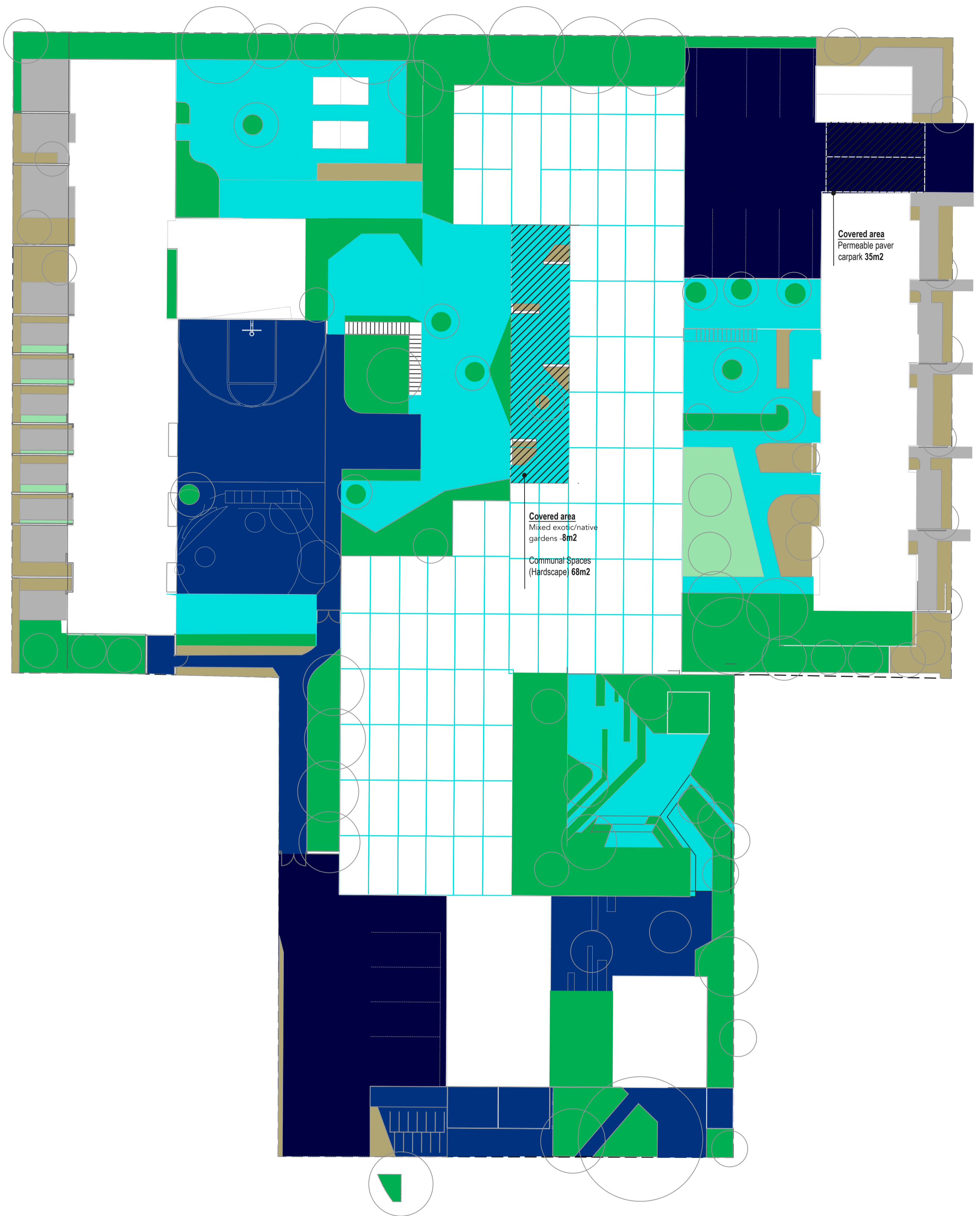
Stage/Job # **J0086.17 - YouthHub**
Issue **Consent Issue**
Revision No. **7**

Drawing Date 10/13/2020
Scale 1 : 200
Page format A2
Drawn by Steffan Kraberger

Legend

■ Communal spaces (Hardscape) - 301m² ■ Native garden, trees & habitats - 231m²





Not for construction purposes - consent issue

L106 | Landscape Uses Plan
Combined

Youth Hub
Landscape plans

The Youth Hub Trust
Te Hurihanga ō Rangatahi

Stage/Job # **J0086.17 - YouthHub**
Issue **Consent Issue**
Revision No. **7**

Drawing Date 10/13/2020
Scale 1 : 200
Page format A2
Drawn by Steffan Kraberger

Legend

- Private Courtyard (Hardscape) - 160m²
- Native garden, trees & habitats - 689m²
- Communal spaces (Hardscape) - 715m²
- Mixed exotic/native gardens - 187m²
- Public Spaces (Hardscape) - 415m²
- Orchard/Garden - 43m²
- Permeable paver carpark - 429m²

