

Site 2 - Peterborough Street	
VP#	
Viewpoint 2-402	N Hagley Park, across from 108 Park Terrace
Viewpoint 2-403	N Hagley Park, across from 76 Park Terrace
Viewpoint 2-404	18 Peterborough Street







**Viewpoint 2-402** N Hagley Park, across from 108 Park Terrace - Existing

View at 200mm when printed at 100%

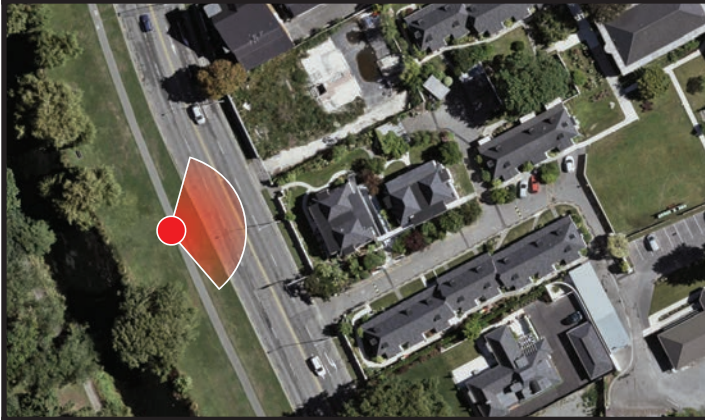


Ryman Healthcare  
Park Terrace Retirement Village  
Visual Simulation

**Viewpoint 2-402**

N Hagley Park, across from 108 Park Tce - Existing

Easting (NZGD2000 Mt Pleasant)	391924.42
Northing (NZGD2000 Mt Pleasant)	807444.04
Elevation (m)	15.63
Height of Camera (m)	1.65
Date & Time of Photography	29/04/2020 at 1:52pm
Camera Used	Canon EOS 6D II 50mm
Orientation of View	ENE



Visual Simulation is to be printed and viewed at the following sizes in compliance with NZILA Best Practise Guide 10.2

Primary Horizontal Field of View 124°  
Primary Vertical Field of View 55°

This page is to be printed at 100%.  
At this scale the image is to be viewed at 200mm from the viewer's eyes.





**Viewpoint 2-402** N Hagley Park, across from 108 Park Terrace - Proposed - Site 2

View at 200mm when printed at 100%

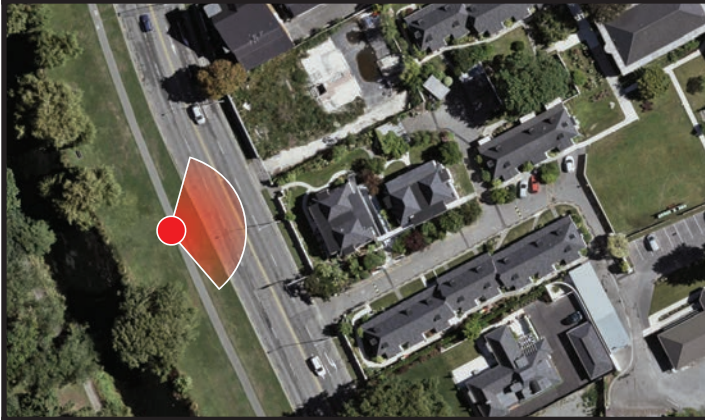


Ryman Healthcare  
Park Terrace Retirement Village  
Visual Simulation

**Viewpoint 2-402**

N Hagley Park, across from 108 Park Tce - Proposed


Easting (NZGD2000 Mt Pleasant)	391924.42
Northing (NZGD2000 Mt Pleasant)	807444.04
Elevation (m)	15.63
Height of Camera (m)	1.65
Date & Time of Photography	29/04/2020 at 1:52pm
Camera Used	Canon EOS 6D II 50mm
Orientation of View	ENE



Visual Simulation is to be printed and viewed at the following sizes in compliance with NZILA Best Practise Guide 10.2

Primary Horizontal Field of View 124°  
Primary Vertical Field of View 55°

This page is to be printed at 100%.  
At this scale the image is to be viewed at 200mm from the viewer's eyes.

 Buildings shaded with this overlay represent external proposed developments.





**Viewpoint 2-403** N Hagley Park, across from 76 Park Terrace - Existing

View at 200mm when printed at 100%

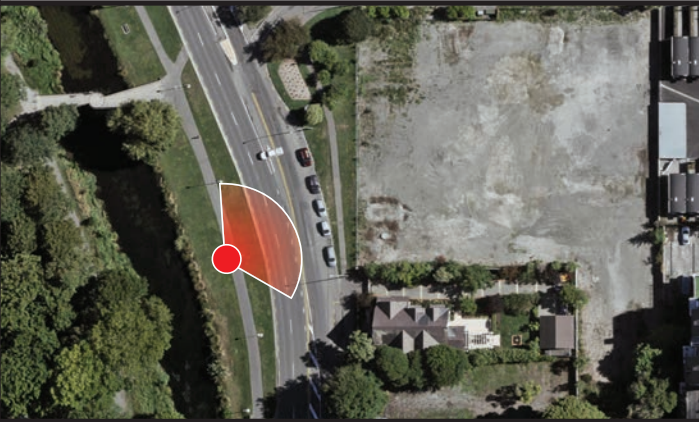


Ryman Healthcare  
Park Terrace Retirement Village  
Visual Simulation

**Viewpoint 2-403**

N Hagley Park, across from 76 Park Tce - Existing

Easting (NZGD2000 Mt Pleasant)	391997.89
Northing (NZGD2000 Mt Pleasant)	807280.37
Elevation (m)	15.27
Height of Camera (m)	1.65
Date & Time of Photography	29/04/2020 at 2:03pm
Camera Used	Canon EOS 6D II 50mm
Orientation of View	NE



Visual Simulation is to be printed and viewed at the following sizes in compliance with NZILA Best Practise Guide 10.2

Primary Horizontal Field of View 124°  
Primary Vertical Field of View 55°

This page is to be printed at 100%.  
At this scale the image is to be viewed at 200mm from the viewer's eyes.





**Viewpoint 2-403** N Hagley Park, across from 76 Park Terrace - Proposed - Site 2

View at 200mm when printed at 100%



Ryman Healthcare  
Park Terrace Retirement Village  
Visual Simulation

**Viewpoint 2-403**

N Hagley Park, across from 76 Park Tce - Proposed

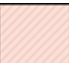
Easting (NZGD2000 Mt Pleasant)	391997.89
Northing (NZGD2000 Mt Pleasant)	807280.37
Elevation (m)	15.27
Height of Camera (m)	1.65
Date & Time of Photography	29/04/2020 at 2:03pm
Camera Used	Canon EOS 6D II 50mm
Orientation of View	NE



Visual Simulation is to be printed and viewed at the following sizes in compliance with NZILA Best Practise Guide 10.2

Primary Horizontal Field of View 124°  
Primary Vertical Field of View 55°

This page is to be printed at 100%.  
At this scale the image is to be viewed at 200mm from the viewer's eyes.

 Buildings shaded with this overlay represent external proposed developments.





**Viewpoint 2-404** 18 Peterborough Street - Existing

View at 200mm when printed at 100%



Ryman Healthcare  
Park Terrace Retirement Village  
Visual Simulation

**Viewpoint 2-404**  
18 Peterborough Street - Existing

Easting (NZGD2000 Mt Pleasant)	392098.61
Northing (NZGD2000 Mt Pleasant)	807213.93
Elevation (m)	15.90
Height of Camera (m)	1.65
Date & Time of Photography	29/04/2020 at 2:16pm
Camera Used	Canon EOS 6D II 50mm
Orientation of View	NNW



Visual Simulation is to be printed and viewed at the following sizes in compliance with NZILA Best Practise Guide 10.2

Primary Horizontal Field of View 124°  
Primary Vertical Field of View 55°

This page is to be printed at 100%.  
At this scale the image is to be viewed at 200mm from the viewer's eyes.





**Viewpoint 2-404** 18 Peterborough Street - Proposed - Site 2

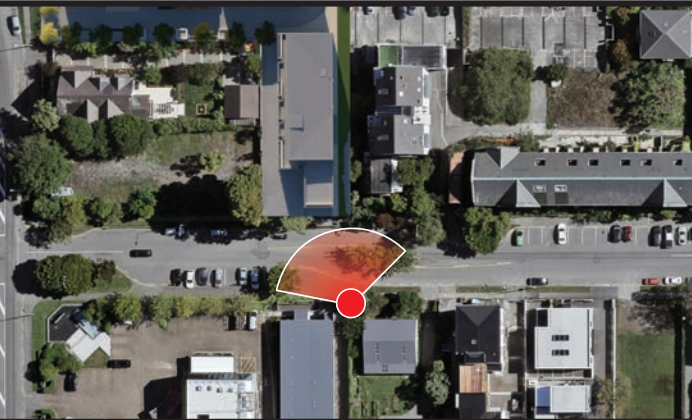
View at 200mm when printed at 100%



Ryman Healthcare  
Park Terrace Retirement Village  
Visual Simulation

**Viewpoint 2-404**  
18 Peterborough Street - Proposed


Easting (NZGD2000 Mt Pleasant)	392098.61
Northing (NZGD2000 Mt Pleasant)	807213.93
Elevation (m)	15.90
Height of Camera (m)	1.65
Date & Time of Photography	29/04/2020 at 2:16pm
Camera Used	Canon EOS 6D II 50mm
Orientation of View	NNW



Visual Simulation is to be printed and viewed at the following sizes in compliance with NZILA Best Practise Guide 10.2

Primary Horizontal Field of View 124°  
Primary Vertical Field of View 55°

This page is to be printed at 100%.  
At this scale the image is to be viewed at 200mm from the viewer's eyes.

 Buildings shaded with this overlay represent external proposed developments.