

Site 2 - Peterborough Street

VP#	
Viewpoint 2-501	Corner of Park Terrace and Salisbury Street
Viewpoint 2-502	15 Salisbury Street
Viewpoint 2-503	Salisbury Street, Entrance to Westwood Terrace





Viewpoint 2-501 Corner of Park Terrace and Salisbury Street - Existing

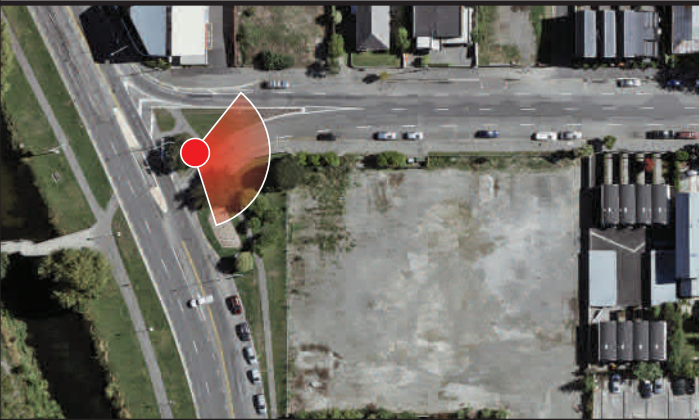
View at 200mm when printed at 100%



Ryman Healthcare
Park Terrace Retirement Village
Visual Simulation

Viewpoint 2-501
Corner of Park Tce and Salisbury St - Existing

Easting (NZGD2000 Mt Pleasant)	392007.35
Northing (NZGD2000 Mt Pleasant)	807334.02
Elevation (m)	17.66
Height of Camera (m)	1.65
Date & Time of Photography	16/06/2020 at 12:39pm
Camera Used	Canon EOS 6D II 50mm
Orientation of View	E



Visual Simulation is to be printed and viewed at the following sizes in compliance with NZILA Best Practise Guide 10.2

Primary Horizontal Field of View 124°
Primary Vertical Field of View 55°

This page is to be printed at 100%.
At this scale the image is to be viewed at 200mm from the viewer's eyes.



Viewpoint 2-501 Corner of Park Terrace and Salisbury Street - Proposed

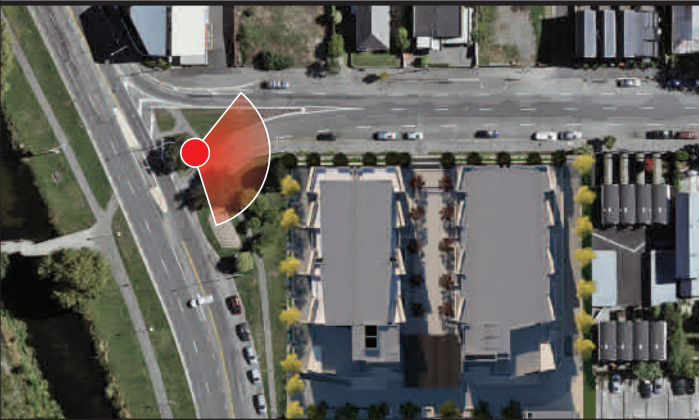
View at 200mm when printed at 100%



Ryman Healthcare
Park Terrace Retirement Village
Visual Simulation

Viewpoint 2-501
Corner of Park Tce and Salisbury St - Proposed

Easting (NZGD2000 Mt Pleasant)	392007.35
Northing (NZGD2000 Mt Pleasant)	807334.02
Elevation (m)	17.66
Height of Camera (m)	1.65
Date & Time of Photography	16/06/2020 at 12:39pm
Camera Used	Canon EOS 6D II 50mm
Orientation of View	E



Visual Simulation is to be printed and viewed at the following sizes in compliance with NZILA Best Practise Guide 10.2

Primary Horizontal Field of View 124°
Primary Vertical Field of View 55°

This page is to be printed at 100%.
At this scale the image is to be viewed at 200mm from the viewer's eyes.



Viewpoint 2-502 15 Salisbury Street - Existing

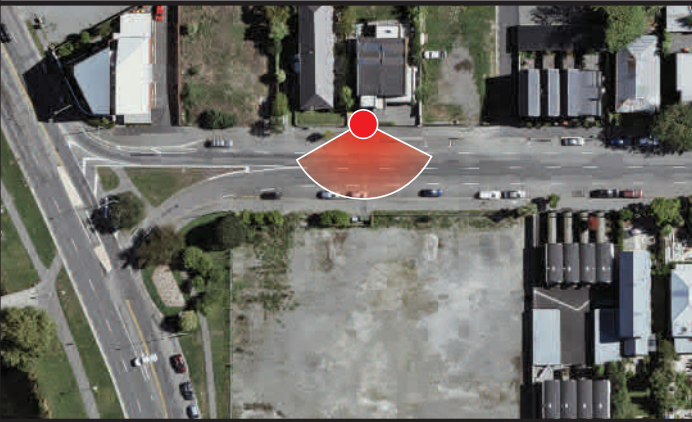
View at 200mm when printed at 100%



Ryman Healthcare
Park Terrace Retirement Village
Visual Simulation

Viewpoint 2-502
15 Salisbury Street - Existing

Easting (NZGD2000 Mt Pleasant)	392057.24
Northing (NZGD2000 Mt Pleasant)	807351.87
Elevation (m)	17.52
Height of Camera (m)	1.65
Date & Time of Photography	16/06/2020 at 12:51pm
Camera Used	Canon EOS 6D II 50mm
Orientation of View	S



Visual Simulation is to be printed and viewed at the following sizes in compliance with NZILA Best Practise Guide 10.2

Primary Horizontal Field of View 124°
Primary Vertical Field of View 55°

This page is to be printed at 100%.
At this scale the image is to be viewed at 200mm from the viewer's eyes.



Viewpoint 2-502 15 Salisbury Street - Proposed

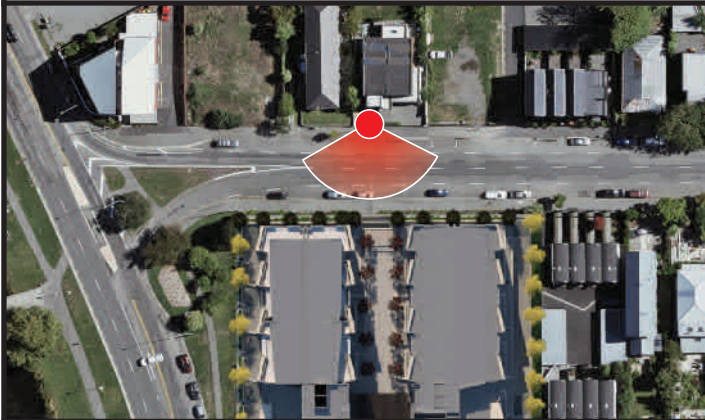
View at 200mm when printed at 100%



Ryman Healthcare
Park Terrace Retirement Village
Visual Simulation

Viewpoint 2-502
15 Salisbury Street - Proposed

Easting (NZGD2000 Mt Pleasant)	392057.24
Northing (NZGD2000 Mt Pleasant)	807351.87
Elevation (m)	17.52
Height of Camera (m)	1.65
Date & Time of Photography	16/06/2020 at 12:51pm
Camera Used	Canon EOS 6D II 50mm
Orientation of View	S



Visual Simulation is to be printed and viewed at the following sizes in compliance with NZILA Best Practise Guide 10.2

Primary Horizontal Field of View 124°
Primary Vertical Field of View 55°

This page is to be printed at 100%.
At this scale the image is to be viewed at 200mm from the viewer's eyes.



Viewpoint 2-503 Salisbury Street, Entrance to Westwood Terrace - Existing

View at 200mm when printed at 100%



Ryman Healthcare
Park Terrace Retirement Village
Visual Simulation

Viewpoint 2-503

Salisbury St, Entrance to Westwood Tce - Existing

Easting (NZGD2000 Mt Pleasant)	392093.09
Northing (NZGD2000 Mt Pleasant)	807353.37
Elevation (m)	17.49
Height of Camera (m)	1.65
Date & Time of Photography	16/06/2020 at 1:01pm
Camera Used	Canon EOS 6D II 50mm
Orientation of View	SW



Visual Simulation is to be printed and viewed at the following sizes in compliance with NZILA Best Practise Guide 10.2

Primary Horizontal Field of View 124°
Primary Vertical Field of View 55°

This page is to be printed at 100%.
At this scale the image is to be viewed at 200mm from the viewer's eyes.



Viewpoint 2-503 Salisbury Street, Entrance to Westwood Terrace - Proposed

View at 200mm when printed at 100%



Ryman Healthcare
Park Terrace Retirement Village
Visual Simulation

Viewpoint 2-503

Salisbury St, Entrance to Westwood Tce - Proposed

Easting (NZGD2000 Mt Pleasant)	392093.09
Northing (NZGD2000 Mt Pleasant)	807353.37
Elevation (m)	17.49
Height of Camera (m)	1.65
Date & Time of Photography	16/06/2020 at 1:01pm
Camera Used	Canon EOS 6D II 50mm
Orientation of View	SW



Visual Simulation is to be printed and viewed at the following sizes in compliance with NZILA Best Practise Guide 10.2

Primary Horizontal Field of View 124°
Primary Vertical Field of View 55°

This page is to be printed at 100%.
At this scale the image is to be viewed at 200mm from the viewer's eyes.