

Sites Combined

VP#	
Viewpoint 3-1	Park Terrace across from George Hotel
Viewpoint 3-2	N Hagley Park Bridge
Viewpoint 3-3	N Hagley Park West side of bridge
Viewpoint 3-4	N Hagley Park across from 112 Park Terrace





Viewpoint 3-1 Park Terrace across from George Hotel - Existing

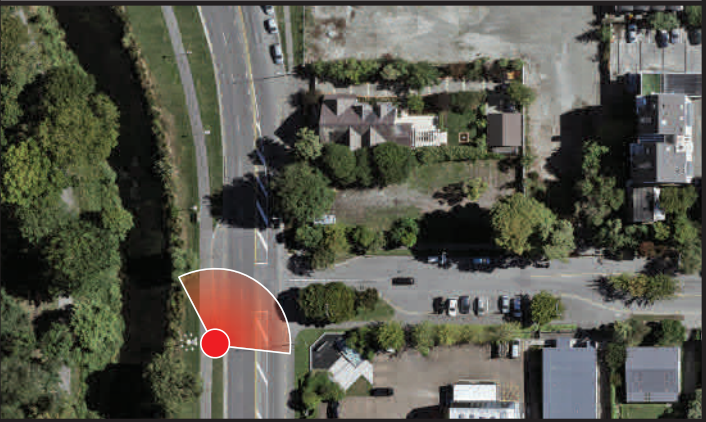
View at 200mm when printed at 100%



Ryman Healthcare
Park Terrace Retirement Village
Visual Simulation

Viewpoint 3-1
Park T across from George Hotel - Existing

Easting (NZGD2000 Mt Pleasant)	392006.393
Northing (NZGD2000 Mt Pleasant)	807209.131
Elevation (m)	17.38
Height of Camera (m)	1.67
Date & Time of Photography	11/02/2020 at 5:28pm
Camera Used	Canon EOS 6D II 50mm
Orientation of View	NW



Visual Simulation is to be printed and viewed at the following sizes in compliance with NZILA Best Practise Guide 10.2

Primary Horizontal Field of View 124°
Primary Vertical Field of View 55°

This page is to be printed at 100%.
At this scale the image is to be viewed at 200mm from the viewer's eyes.



Viewpoint 3-1 Park Terrace across from George Hotel - Proposed - Sites Combined

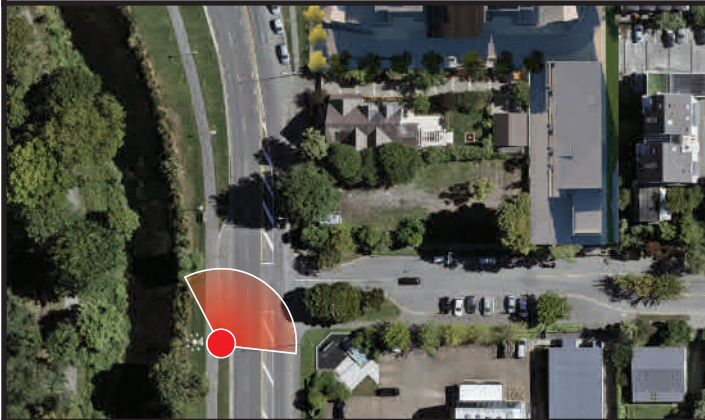
View at 200mm when printed at 100%



Ryman Healthcare
Park Terrace Retirement Village
Visual Simulation

Viewpoint 3-1
Park T across from George Hotel - Proposed

Easting (NZGD2000 Mt Pleasant)	392006.393
Northing (NZGD2000 Mt Pleasant)	807209.131
Elevation (m)	17.38
Height of Camera (m)	1.67
Date & Time of Photography	11/02/2020 at 5:28pm
Camera Used	Canon EOS 6D II 50mm
Orientation of View	NW



Visual Simulation is to be printed and viewed at the following sizes in compliance with NZILA Best Practise Guide 10.2

Primary Horizontal Field of View 124°
Primary Vertical Field of View 55°

This page is to be printed at 100%.
At this scale the image is to be viewed at 200mm from the viewer's eyes.



Viewpoint 3-2 N Hagley Park East side of bridge - Existing

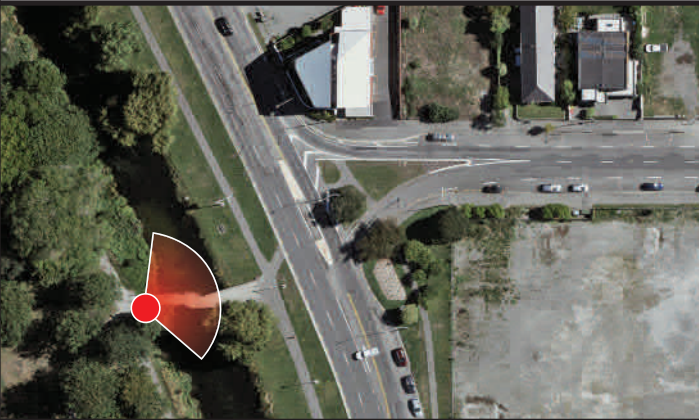
View at 200mm when printed at 100%



Ryman Healthcare
Park Terrace Retirement Village
Visual Simulation

Viewpoint 3-2
N Hagley Park bridge - Existing

Easting (NZGD2000 Mt Pleasant)	391955.48
Northing (NZGD2000 Mt Pleasant)	807312.91
Elevation (m)	15.74
Height of Camera (m)	1.65
Date & Time of Photography	11/02/2020 at 4:30pm
Camera Used	Canon EOS 6D II 50mm
Orientation of View	ENE



Visual Simulation is to be printed and viewed at the following sizes in compliance with NZILA Best Practise Guide 10.2

Primary Horizontal Field of View 124°
Primary Vertical Field of View 55°

This page is to be printed at 100%.
At this scale the image is to be viewed at 200mm from the viewer's eyes.



Viewpoint 3-2 N Hagley Park East side of bridge - Proposed - Sites Combined

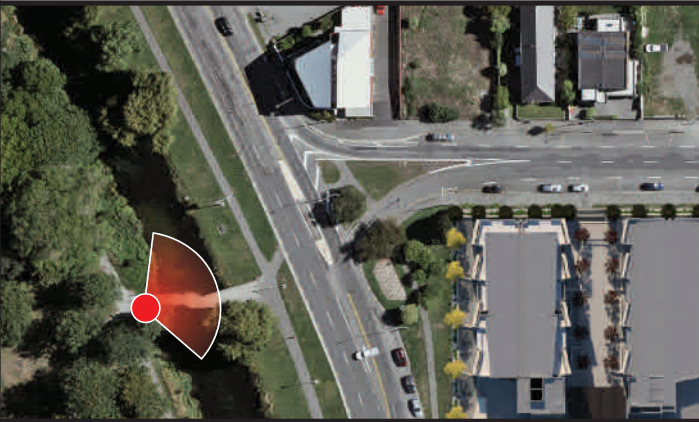
View at 200mm when printed at 100%



Ryman Healthcare
Park Terrace Retirement Village
Visual Simulation

Viewpoint 3-2
N Hagley Park bridge - Proposed

Easting (NZGD2000 Mt Pleasant)	391955.48
Northing (NZGD2000 Mt Pleasant)	807312.91
Elevation (m)	15.74
Height of Camera (m)	1.65
Date & Time of Photography	11/02/2020 at 4:30pm
Camera Used	Canon EOS 6D II 50mm
Orientation of View	ENE



Visual Simulation is to be printed and viewed at the following sizes in compliance with NZILA Best Practise Guide 10.2

Primary Horizontal Field of View 124°
Primary Vertical Field of View 55°

This page is to be printed at 100%.
At this scale the image is to be viewed at 200mm from the viewer's eyes.



Viewpoint 3-3 N Hagley Park West side of bridge - Existing

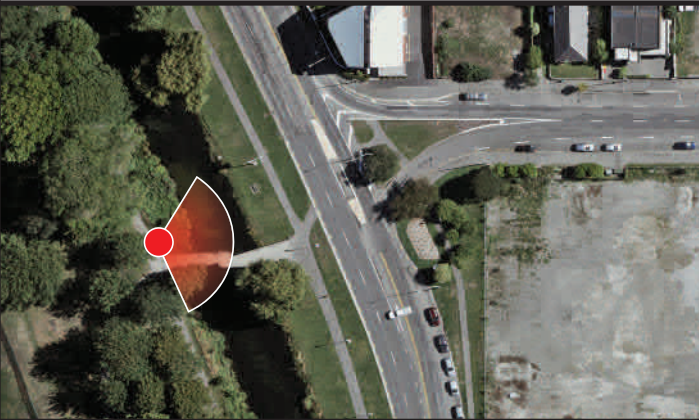
View at 200mm when printed at 100%



Ryman Healthcare
Park Terrace Retirement Village
Visual Simulation

Viewpoint 3-3
N Hagley Park West side of bridge - Existing

Easting (NZGD2000 Mt Pleasant)	391940.297
Northing (NZGD2000 Mt Pleasant)	807317.199
Elevation (m)	17.471
Height of Camera (m)	1.66
Date & Time of Photography	11/02/2020 at 4:16pm
Camera Used	Canon EOS 6D II 50mm
Orientation of View	E



Visual Simulation is to be printed and viewed at the following sizes in compliance with NZILA Best Practise Guide 10.2

Primary Horizontal Field of View 124°
Primary Vertical Field of View 55°

This page is to be printed at 100%.
At this scale the image is to be viewed at 200mm from the viewer's eyes.



Viewpoint 3-3 N Hagley Park West side of bridge - Proposed - Sites Combined

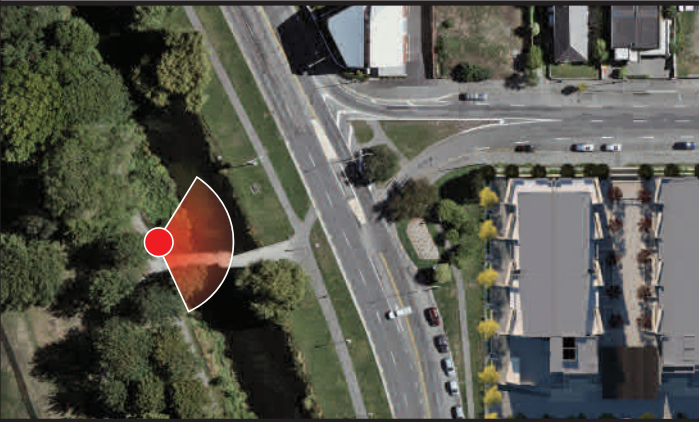
View at 200mm when printed at 100%



Ryman Healthcare
Park Terrace Retirement Village
Visual Simulation

Viewpoint 3-3
N Hagley Park West side of bridge - Proposed

Easting (NZGD2000 Mt Pleasant)	391940.297
Northing (NZGD2000 Mt Pleasant)	807317.199
Elevation (m)	17.471
Height of Camera (m)	1.66
Date & Time of Photography	11/02/2020 at 4:16pm
Camera Used	Canon EOS 6D II 50mm
Orientation of View	E



Visual Simulation is to be printed and viewed at the following sizes in compliance with NZILA Best Practise Guide 10.2

Primary Horizontal Field of View 124°
Primary Vertical Field of View 55°

This page is to be printed at 100%.
At this scale the image is to be viewed at 200mm from the viewer's eyes.



Viewpoint 3-4 N Hagley Park across from 112 Park Terrace - Existing

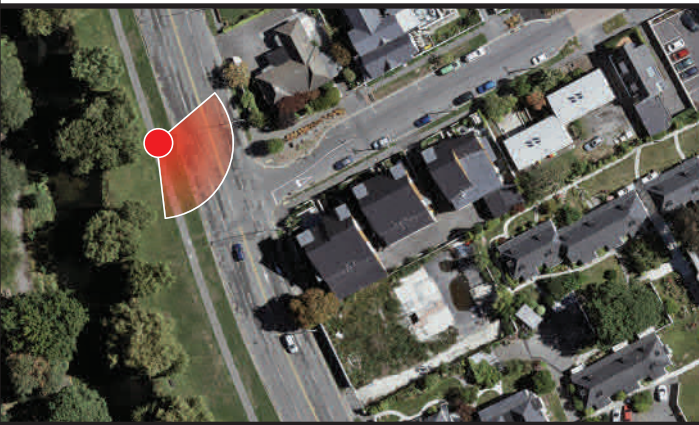
View at 200mm when printed at 100%



Ryman Healthcare
Park Terrace Retirement Village
Visual Simulation

Viewpoint 3-4
N Hagley Park across from 112 Park T - Existing

Easting (NZGD2000 Mt Pleasant)	391899.828
Northing (NZGD2000 Mt Pleasant)	807512.954
Elevation (m)	17.206
Height of Camera (m)	1.665
Date & Time of Photography	11/02/2020 at 6:16pm
Camera Used	Canon EOS 6D II 50mm
Orientation of View	ESE



Visual Simulation is to be printed and viewed at the following sizes in compliance with NZILA Best Practice Guide 10.2

Primary Horizontal Field of View 124°
Primary Vertical Field of View 55°

This page is to be printed at 100%.
At this scale the image is to be viewed at 200mm from the viewer's eyes.



Viewpoint 3-4 N Hagley Park across from 112 Park Terrace - Proposed - Sites Combined

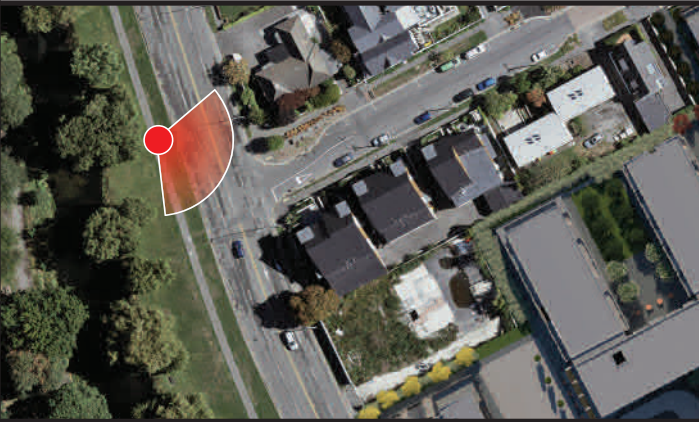
View at 200mm when printed at 100%



Ryman Healthcare
Park Terrace Retirement Village
Visual Simulation

Viewpoint 3-4
N Hagley Park across from 112 Park T - Proposed

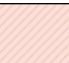
Easting (NZGD2000 Mt Pleasant)	391899.828
Northing (NZGD2000 Mt Pleasant)	807512.954
Elevation (m)	17.206
Height of Camera (m)	1.665
Date & Time of Photography	11/02/2020 at 6:16pm
Camera Used	Canon EOS 6D II 50mm
Orientation of View	ESE



Visual Simulation is to be printed and viewed at the following sizes in compliance with NZILA Best Practise Guide 10.2

Primary Horizontal Field of View 124°
Primary Vertical Field of View 55°

This page is to be printed at 100%.
At this scale the image is to be viewed at 200mm from the viewer's eyes.

 Buildings shaded with this overlay represent external proposed developments.

Sites Combined

VP#	
Viewpoint 3-402	N Hagley Park, across from 108 Park Terrace
Viewpoint 3-403	N Hagley Park, across from 76 Park Terrace





Viewpoint 3-402 N Hagley Park, across from 108 Park Terrace - Existing

View at 200mm when printed at 100%

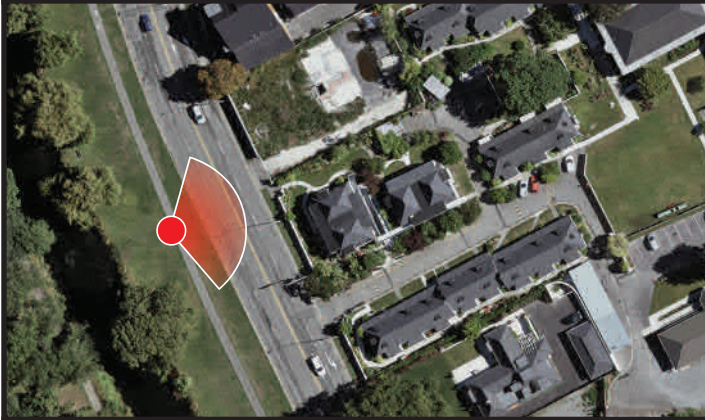


Ryman Healthcare
Park Terrace Retirement Village
Visual Simulation

Viewpoint 3-402

N Hagley Park, across from 108 Park Tce - Existing

Easting (NZGD2000 Mt Pleasant)	391924.42
Northing (NZGD2000 Mt Pleasant)	807444.04
Elevation (m)	15.63
Height of Camera (m)	1.65
Date & Time of Photography	29/04/2020 at 1:52pm
Camera Used	Canon EOS 6D II 50mm
Orientation of View	ENE



Visual Simulation is to be printed and viewed at the following sizes in compliance with NZILA Best Practise Guide 10.2

Primary Horizontal Field of View 124°
Primary Vertical Field of View 55°

This page is to be printed at 100%.
At this scale the image is to be viewed at 200mm from the viewer's eyes.



Viewpoint 3-402 N Hagley Park, across from 108 Park Terrace - Proposed - Sites Combined

View at 200mm when printed at 100%



Ryman Healthcare
Park Terrace Retirement Village
Visual Simulation

Viewpoint 3-402

N Hagley Park, across from 108 Park Tce - Proposed

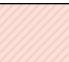
Easting (NZGD2000 Mt Pleasant)	391924.42
Northing (NZGD2000 Mt Pleasant)	807444.04
Elevation (m)	15.63
Height of Camera (m)	1.65
Date & Time of Photography	29/04/2020 at 1:52pm
Camera Used	Canon EOS 6D II 50mm
Orientation of View	ENE



Visual Simulation is to be printed and viewed at the following sizes in compliance with NZILA Best Practise Guide 10.2

Primary Horizontal Field of View 124°
Primary Vertical Field of View 55°

This page is to be printed at 100%.
At this scale the image is to be viewed at 200mm from the viewer's eyes.

 Buildings shaded with this overlay represent external proposed developments.



Viewpoint 3-403 N Hagley Park, across from 76 Park Terrace - Existing

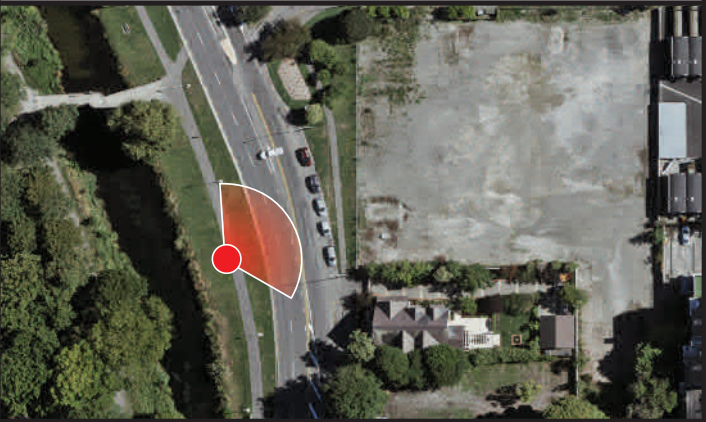
View at 200mm when printed at 100%



Ryman Healthcare
Park Terrace Retirement Village
Visual Simulation

Viewpoint 3-403
N Hagley Park, across from 76 Park Tce - Existing

Easting (NZGD2000 Mt Pleasant)	391997.89
Northing (NZGD2000 Mt Pleasant)	807280.36
Elevation (m)	15.27
Height of Camera (m)	1.65
Date & Time of Photography	29/04/2020 at 2:03pm
Camera Used	Canon EOS 6D II 50mm
Orientation of View	NE



Visual Simulation is to be printed and viewed at the following sizes in compliance with NZILA Best Practise Guide 10.2

Primary Horizontal Field of View 124°
Primary Vertical Field of View 55°

This page is to be printed at 100%.
At this scale the image is to be viewed at 200mm from the viewer's eyes.



Viewpoint 3-403 N Hagley Park, across from 76 Park Terrace - Proposed - Sites Combined

View at 200mm when printed at 100%

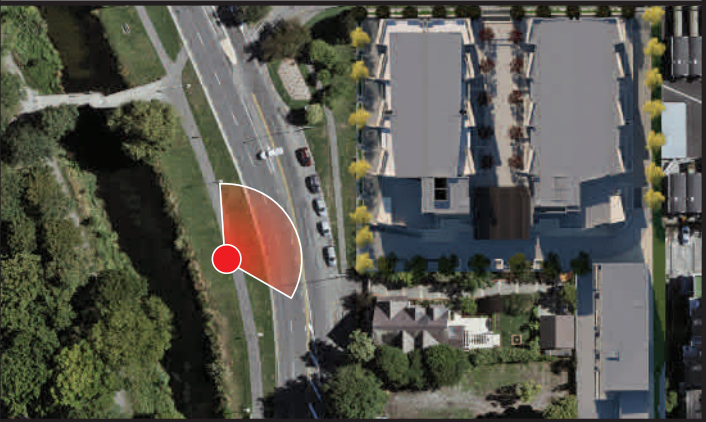


Ryman Healthcare
Park Terrace Retirement Village
Visual Simulation

Viewpoint 3-403

N Hagley Park, across from 76 Park Tce - Proposed

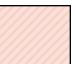
Easting (NZGD2000 Mt Pleasant)	391997.89
Northing (NZGD2000 Mt Pleasant)	807280.36
Elevation (m)	15.27
Height of Camera (m)	1.65
Date & Time of Photography	29/04/2020 at 2:03pm
Camera Used	Canon EOS 6D II 50mm
Orientation of View	NE



Visual Simulation is to be printed and viewed at the following sizes in compliance with NZILA Best Practise Guide 10.2

Primary Horizontal Field of View 124°
Primary Vertical Field of View 55°

This page is to be printed at 100%.
At this scale the image is to be viewed at 200mm from the viewer's eyes.

 Buildings shaded with this overlay represent external proposed developments.