

Site 2 - Peterborough Street	
VP#	
Viewpoint 2-1	Park Terrace across from George Hotel
Viewpoint 2-2	N Hagley Park Bridge
Viewpoint 2-3	N Hagley Park West side of bridge
Viewpoint 2-4	N Hagley Park across from 82 Park Terrace
Viewpoint 2-5	82 Park Terrace
Viewpoint 2-6	N Hagley Park East side of bridge
Viewpoint 2-7	Corner of Victoria St and Salisbury St







**Viewpoint 2-1** Park Terrace across from George Hotel - Existing

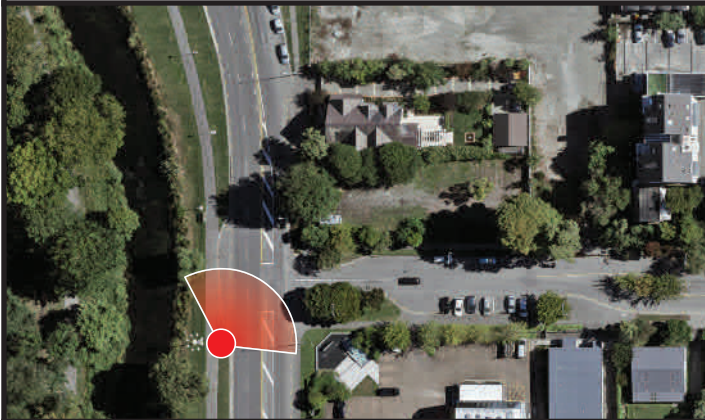
View at 200mm when printed at 100%



Ryman Healthcare  
Park Terrace Retirement Village  
Visual Simulation

**Viewpoint 2-1**  
Park T across from George Hotel - Existing

Easting (NZGD2000 Mt Pleasant)	392006.393
Northing (NZGD2000 Mt Pleasant)	807209.131
Elevation (m)	17.38
Height of Camera (m)	1.67
Date & Time of Photography	11/02/2020 at 5:28pm
Camera Used	Canon EOS 6D II 50mm
Orientation of View	NW



Visual Simulation is to be printed and viewed at the following sizes in compliance with NZILA Best Practise Guide 10.2

Primary Horizontal Field of View 124°  
Primary Vertical Field of View 55°

This page is to be printed at 100%.  
At this scale the image is to be viewed at 200mm from the viewer's eyes.





**Viewpoint 2-1** Park Terrace across from George Hotel - Proposed - Site 2

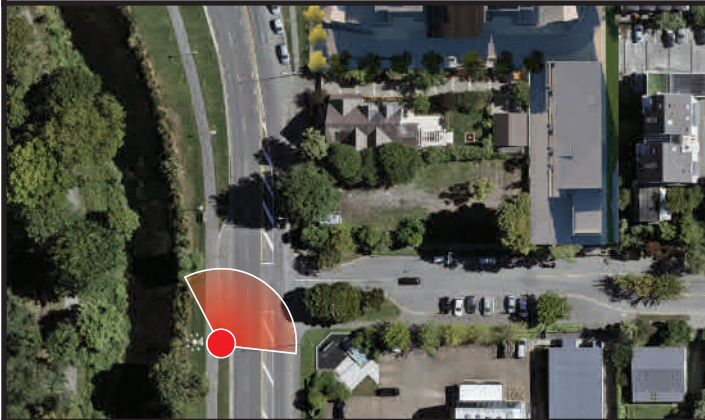
View at 200mm when printed at 100%



Ryman Healthcare  
Park Terrace Retirement Village  
Visual Simulation

**Viewpoint 2-1**  
Park T across from George Hotel - Proposed


Easting (NZGD2000 Mt Pleasant)	<b>392006.393</b>
Northing (NZGD2000 Mt Pleasant)	<b>807209.131</b>
Elevation (m)	<b>17.38</b>
Height of Camera (m)	<b>1.67</b>
Date & Time of Photography	<b>11/02/2020 at 5:28pm</b>
Camera Used	<b>Canon EOS 6D II 50mm</b>
Orientation of View	<b>NW</b>



Visual Simulation is to be printed and viewed at the following sizes in compliance with NZILA Best Practise Guide 10.2

Primary Horizontal Field of View 124°  
Primary Vertical Field of View 55°

This page is to be printed at 100%.  
At this scale the image is to be viewed at 200mm from the viewer's eyes.

 Buildings shaded with this overlay represent external proposed developments.





**Viewpoint 2-2** N Hagley Park East side of bridge - Existing

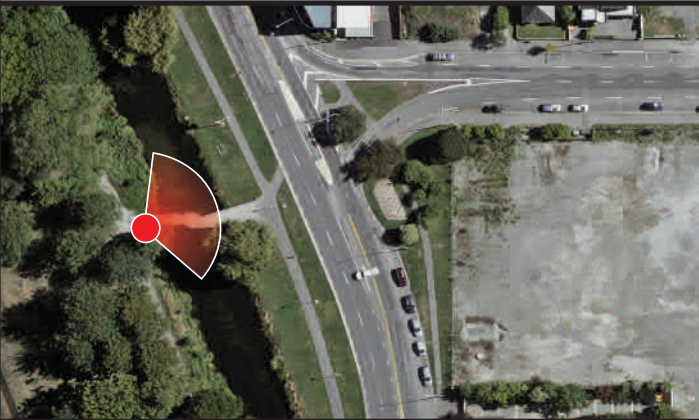
View at 200mm when printed at 100%



Ryman Healthcare  
Park Terrace Retirement Village  
Visual Simulation

**Viewpoint 2-2**  
N Hagley Park bridge - Existing

Easting (NZGD2000 Mt Pleasant)	391955.48
Northing (NZGD2000 Mt Pleasant)	807312.91
Elevation (m)	15.74
Height of Camera (m)	1.65
Date & Time of Photography	11/02/2020 at 4:30pm
Camera Used	Canon EOS 6D II 50mm
Orientation of View	ENE



Visual Simulation is to be printed and viewed at the following sizes in compliance with NZILA Best Practise Guide 10.2

Primary Horizontal Field of View 124°  
Primary Vertical Field of View 55°

This page is to be printed at 100%.  
At this scale the image is to be viewed at 200mm from the viewer's eyes.





**Viewpoint 2-2** N Hagley Park East side of bridge - Proposed - Site 2

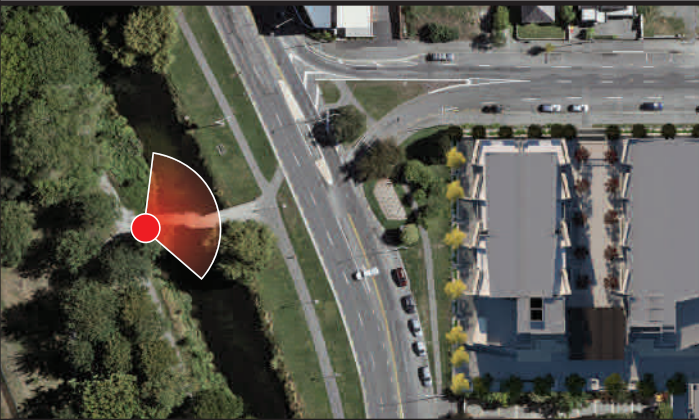
View at 200mm when printed at 100%



Ryman Healthcare  
Park Terrace Retirement Village  
Visual Simulation

**Viewpoint 2-2**  
N Hagley Park bridge - Proposed


Easting (NZGD2000 Mt Pleasant)	391955.48
Northing (NZGD2000 Mt Pleasant)	807312.91
Elevation (m)	15.74
Height of Camera (m)	1.65
Date & Time of Photography	11/02/2020 at 4:30pm
Camera Used	Canon EOS 6D II 50mm
Orientation of View	ENE



Visual Simulation is to be printed and viewed at the following sizes in compliance with NZILA Best Practise Guide 10.2

Primary Horizontal Field of View 124°  
Primary Vertical Field of View 55°

This page is to be printed at 100%.  
At this scale the image is to be viewed at 200mm from the viewer's eyes.

 Buildings shaded with this overlay represent external proposed developments.





**Viewpoint 2-3** N Hagley Park West side of bridge - Existing

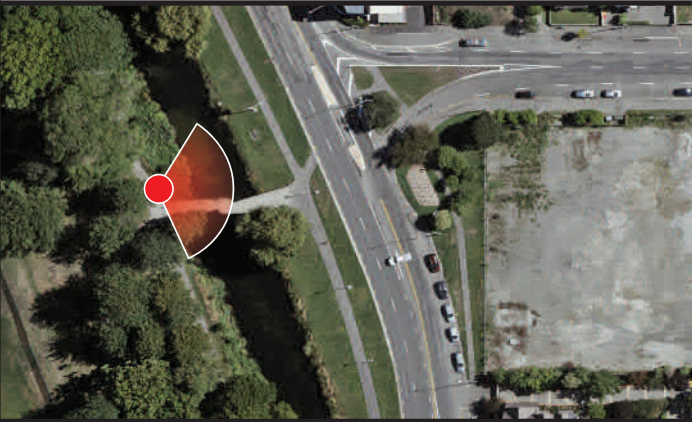
View at 200mm when printed at 100%



Ryman Healthcare  
Park Terrace Retirement Village  
Visual Simulation

**Viewpoint 2-3**  
N Hagley Park West side of bridge - Existing

Easting (NZGD2000 Mt Pleasant)	391940.297
Northing (NZGD2000 Mt Pleasant)	807317.199
Elevation (m)	17.471
Height of Camera (m)	1.66
Date & Time of Photography	11/02/2020 at 4:16pm
Camera Used	Canon EOS 6D II 50mm
Orientation of View	E



Visual Simulation is to be printed and viewed at the following sizes in compliance with NZILA Best Practise Guide 10.2

Primary Horizontal Field of View 124°  
Primary Vertical Field of View 55°

This page is to be printed at 100%.  
At this scale the image is to be viewed at 200mm from the viewer's eyes.





**Viewpoint 2-3** N Hagley Park West side of bridge - Proposed - Site 2

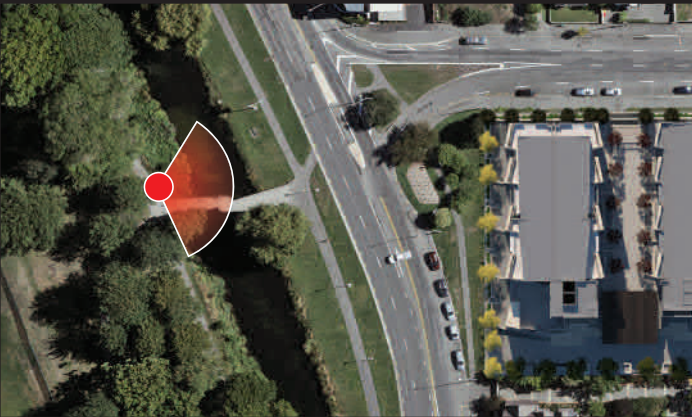
View at 200mm when printed at 100%



Ryman Healthcare  
Park Terrace Retirement Village  
Visual Simulation

**Viewpoint 2-3**  
N Hagley Park West side of bridge - Proposed

Easting (NZGD2000 Mt Pleasant)	391940.297
Northing (NZGD2000 Mt Pleasant)	807317.199
Elevation (m)	17.471
Height of Camera (m)	1.66
Date & Time of Photography	11/02/2020 at 4:16pm
Camera Used	Canon EOS 6D II 50mm
Orientation of View	E



Visual Simulation is to be printed and viewed at the following sizes in compliance with NZILA Best Practise Guide 10.2

Primary Horizontal Field of View 124°  
Primary Vertical Field of View 55°

This page is to be printed at 100%.  
At this scale the image is to be viewed at 200mm from the viewer's eyes.





**Viewpoint 2-4** N Hagley Park across from 82 Park Terrace - Existing

View at 200mm when printed at 100%



Ryman Healthcare  
Park Terrace Retirement Village  
Visual Simulation

**Viewpoint 2-4**  
N Hagley Park across from 82 Park T - Existing

Easting (NZGD2000 Mt Pleasant)	391937.424
Northing (NZGD2000 Mt Pleasant)	807346.145
Elevation (m)	17.155
Height of Camera (m)	1.65
Date & Time of Photography	11/02/2020 at 4:42pm
Camera Used	Canon EOS 6D II 50mm
Orientation of View	ESE



Visual Simulation is to be printed and viewed at the following sizes in compliance with NZILA Best Practise Guide 10.2

Primary Horizontal Field of View 124°  
Primary Vertical Field of View 55°

This page is to be printed at 100%.  
At this scale the image is to be viewed at 200mm from the viewer's eyes.





**Viewpoint 2-4** N Hagley Park across from 82 Park Terrace - Proposed - Site 2

View at 200mm when printed at 100%



Ryman Healthcare  
Park Terrace Retirement Village  
Visual Simulation

**Viewpoint 2-4**  
N Hagley Park across from 82 Park T - Proposed

Easting (NZGD2000 Mt Pleasant)	391937.424
Northing (NZGD2000 Mt Pleasant)	807346.145
Elevation (m)	17.155
Height of Camera (m)	1.65
Date & Time of Photography	11/02/2020 at 4:42pm
Camera Used	Canon EOS 6D II 50mm
Orientation of View	ESE



Visual Simulation is to be printed and viewed at the following sizes in compliance with NZILA Best Practise Guide 10.2

Primary Horizontal Field of View 124°  
Primary Vertical Field of View 55°

This page is to be printed at 100%.  
At this scale the image is to be viewed at 200mm from the viewer's eyes.





**Viewpoint 2-5** 82 Park Terrace - Existing

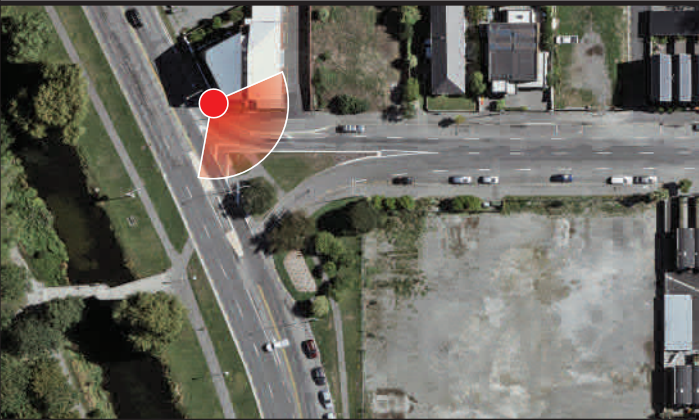
View at 200mm when printed at 100%



Ryman Healthcare  
Park Terrace Retirement Village  
Visual Simulation

**Viewpoint 2-5**  
82 Park Terrace - Existing

Easting (NZGD2000 Mt Pleasant)	391992.96
Northing (NZGD2000 Mt Pleasant)	807355.299
Elevation (m)	17.221
Height of Camera (m)	1.655
Date & Time of Photography	11/02/2020 at 4:00pm
Camera Used	Canon EOS 6D II 50mm
Orientation of View	SE



Visual Simulation is to be printed and viewed at the following sizes in compliance with NZILA Best Practice Guide 10.2

Primary Horizontal Field of View 124°  
Primary Vertical Field of View 55°

This page is to be printed at 100%.  
At this scale the image is to be viewed at 200mm from the viewer's eyes.





**Viewpoint 2-5** 82 Park Terrace - Proposed - Site 2

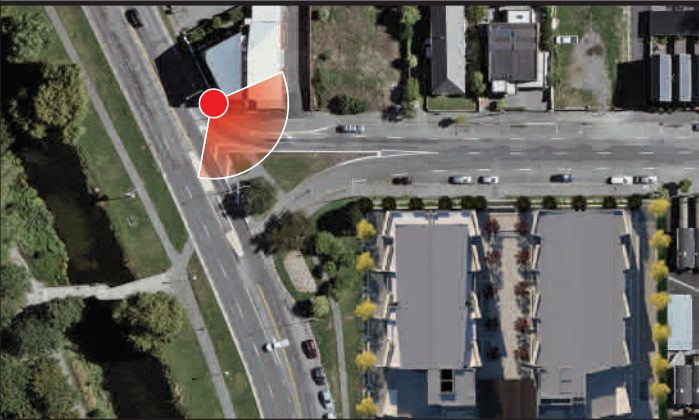
View at 200mm when printed at 100%



Ryman Healthcare  
Park Terrace Retirement Village  
Visual Simulation

**Viewpoint 2-5**  
82 Park Terrace - Proposed

Easting (NZGD2000 Mt Pleasant)	391992.96
Northing (NZGD2000 Mt Pleasant)	807355.299
Elevation (m)	17.221
Height of Camera (m)	1.655
Date & Time of Photography	11/02/2020 at 4:00pm
Camera Used	Canon EOS 6D II 50mm
Orientation of View	SE



Visual Simulation is to be printed and viewed at the following sizes in compliance with NZILA Best Practise Guide 10.2

Primary Horizontal Field of View 124°  
Primary Vertical Field of View 55°

This page is to be printed at 100%.  
At this scale the image is to be viewed at 200mm from the viewer's eyes.





**Viewpoint 2-6** N Hagley Park East side of bridge - Existing

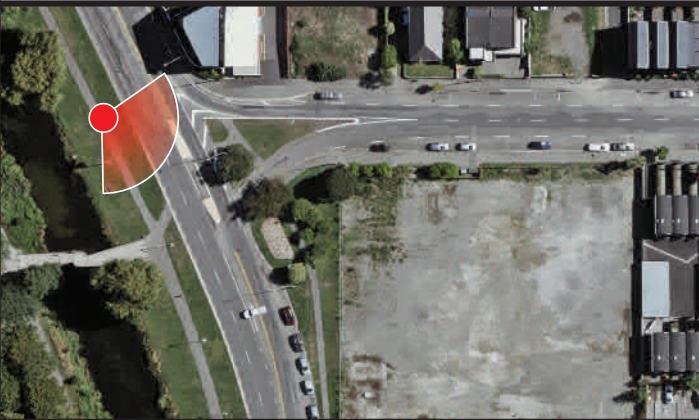
View at 200mm when printed at 100%



Ryman Healthcare  
Park Terrace Retirement Village  
Visual Simulation

**Viewpoint 2-6**  
N Hagley Park East side of bridge - Existing

Easting (NZGD2000 Mt Pleasant)	391972.35
Northing (NZGD2000 Mt Pleasant)	807340.94
Elevation (m)	15.38
Height of Camera (m)	1.65
Date & Time of Photography	11/02/2020 at 4:58pm
Camera Used	Canon EOS 6D II 50mm
Orientation of View	ESE



Visual Simulation is to be printed and viewed at the following sizes in compliance with NZILA Best Practise Guide 10.2

Primary Horizontal Field of View 124°  
Primary Vertical Field of View 55°

This page is to be printed at 100%.  
At this scale the image is to be viewed at 200mm from the viewer's eyes.





**Viewpoint 2-6** N Hagley Park East side of bridge - Proposed - Site 2

View at 200mm when printed at 100%



Ryman Healthcare  
Park Terrace Retirement Village  
Visual Simulation

**Viewpoint 2-6**  
N Hagley Park East side of bridge - Proposed

Easting (NZGD2000 Mt Pleasant)	391972.35
Northing (NZGD2000 Mt Pleasant)	807340.94
Elevation (m)	15.38
Height of Camera (m)	1.65
Date & Time of Photography	11/02/2020 at 4:58pm
Camera Used	Canon EOS 6D II 50mm
Orientation of View	ESE



Visual Simulation is to be printed and viewed at the following sizes in compliance with NZILA Best Practise Guide 10.2

Primary Horizontal Field of View 124°  
Primary Vertical Field of View 55°

This page is to be printed at 100%.  
At this scale the image is to be viewed at 200mm from the viewer's eyes.





**Viewpoint 2-7** Corner of Victoria St and Salisbury St - Existing

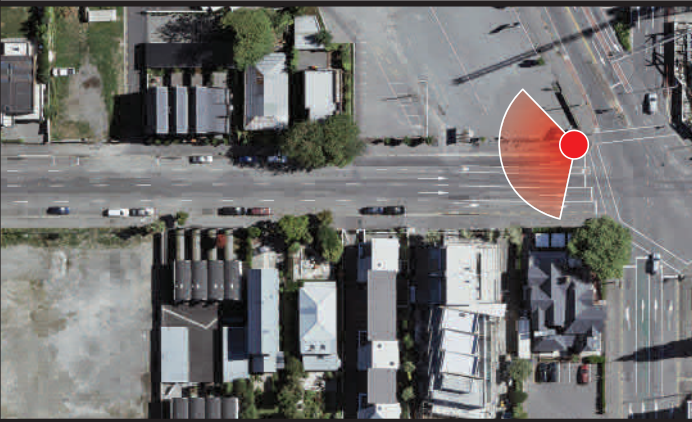
View at 200mm when printed at 100%



Ryman Healthcare  
Park Terrace Retirement Village  
Visual Simulation

**Viewpoint 2-7**  
Corner of Victoria St and Salisbury St - Existing

Easting (NZGD2000 Mt Pleasant)	392191.814
Northing (NZGD2000 Mt Pleasant)	807353.371
Elevation (m)	17.848
Height of Camera (m)	1.66
Date & Time of Photography	11/02/2020 at 3:40pm
Camera Used	Canon EOS 6D II 50mm
Orientation of View	WSW



Visual Simulation is to be printed and viewed at the following sizes in compliance with NZILA Best Practise Guide 10.2

Primary Horizontal Field of View 124°  
Primary Vertical Field of View 55°

This page is to be printed at 100%.  
At this scale the image is to be viewed at 200mm from the viewer's eyes.





**Viewpoint 2-7** Corner of Victoria St and Salisbury St - Proposed - Site 2

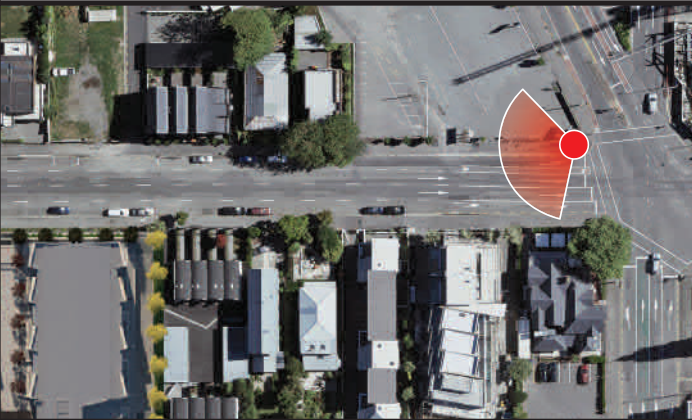
View at 200mm when printed at 100%



Ryman Healthcare  
Park Terrace Retirement Village  
Visual Simulation

**Viewpoint 2-7**  
Corner of Victoria St and Salisbury St - Proposed

Easting (NZGD2000 Mt Pleasant)	392191.814
Northing (NZGD2000 Mt Pleasant)	807353.371
Elevation (m)	17.848
Height of Camera (m)	1.66
Date & Time of Photography	11/02/2020 at 3:40pm
Camera Used	Canon EOS 6D II 50mm
Orientation of View	WSW



Visual Simulation is to be printed and viewed at the following sizes in compliance with NZILA Best Practise Guide 10.2

Primary Horizontal Field of View 124°  
Primary Vertical Field of View 55°

This page is to be printed at 100%.  
At this scale the image is to be viewed at 200mm from the viewer's eyes.



Site 2 - Peterborough Street	
VP#	
Viewpoint 2-402	N Hagley Park, across from 108 Park Terrace
Viewpoint 2-403	N Hagley Park, across from 76 Park Terrace
Viewpoint 2-404	18 Peterborough Street







**Viewpoint 2-402** N Hagley Park, across from 108 Park Terrace - Existing

View at 200mm when printed at 100%

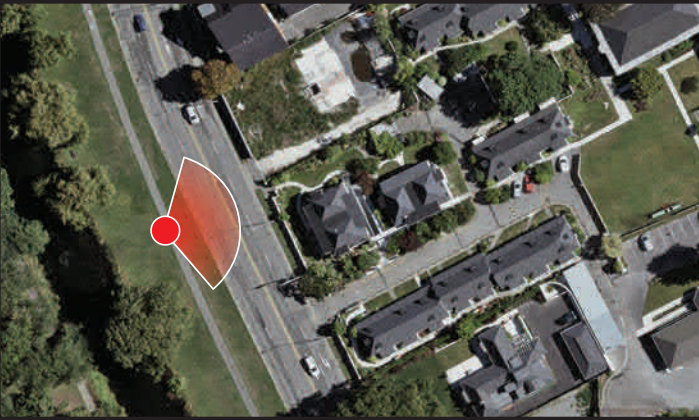


Ryman Healthcare  
Park Terrace Retirement Village  
Visual Simulation

**Viewpoint 2-402**

N Hagley Park, across from 108 Park Tce - Existing

Easting (NZGD2000 Mt Pleasant)	391924.42
Northing (NZGD2000 Mt Pleasant)	807444.04
Elevation (m)	15.63
Height of Camera (m)	1.65
Date & Time of Photography	29/04/2020 at 1:52pm
Camera Used	Canon EOS 6D II 50mm
Orientation of View	ENE



Visual Simulation is to be printed and viewed at the following sizes in compliance with NZILA Best Practise Guide 10.2

Primary Horizontal Field of View 124°  
Primary Vertical Field of View 55°

This page is to be printed at 100%.  
At this scale the image is to be viewed at 200mm from the viewer's eyes.





**Viewpoint 2-402** N Hagley Park, across from 108 Park Terrace - Proposed - Site 2

View at 200mm when printed at 100%

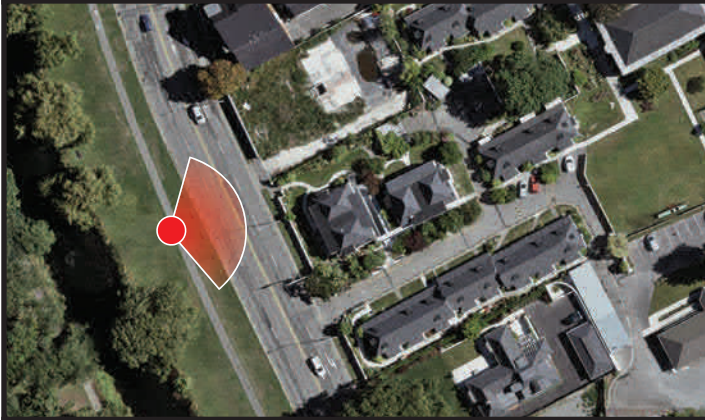


Ryman Healthcare  
Park Terrace Retirement Village  
Visual Simulation

**Viewpoint 2-402**

N Hagley Park, across from 108 Park Tce - Proposed


Easting (NZGD2000 Mt Pleasant)	391924.42
Northing (NZGD2000 Mt Pleasant)	807444.04
Elevation (m)	15.63
Height of Camera (m)	1.65
Date & Time of Photography	29/04/2020 at 1:52pm
Camera Used	Canon EOS 6D II 50mm
Orientation of View	ENE



Visual Simulation is to be printed and viewed at the following sizes in compliance with NZILA Best Practise Guide 10.2

Primary Horizontal Field of View 124°  
Primary Vertical Field of View 55°

This page is to be printed at 100%.  
At this scale the image is to be viewed at 200mm from the viewer's eyes.

 Buildings shaded with this overlay represent external proposed developments.





**Viewpoint 2-403** N Hagley Park, across from 76 Park Terrace - Existing

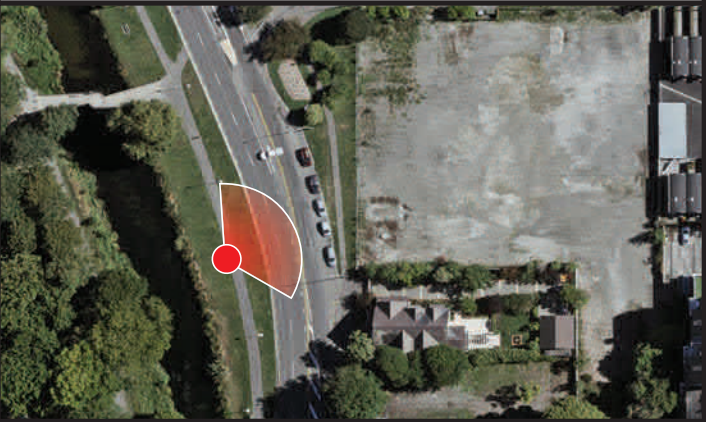
View at 200mm when printed at 100%



Ryman Healthcare  
Park Terrace Retirement Village  
Visual Simulation

**Viewpoint 2-403**  
N Hagley Park, across from 76 Park Tce - Existing

Easting (NZGD2000 Mt Pleasant)	391997.89
Northing (NZGD2000 Mt Pleasant)	807280.37
Elevation (m)	15.27
Height of Camera (m)	1.65
Date & Time of Photography	29/04/2020 at 2:03pm
Camera Used	Canon EOS 6D II 50mm
Orientation of View	NE



Visual Simulation is to be printed and viewed at the following sizes in compliance with NZILA Best Practise Guide 10.2

Primary Horizontal Field of View 124°  
Primary Vertical Field of View 55°

This page is to be printed at 100%.  
At this scale the image is to be viewed at 200mm from the viewer's eyes.





**Viewpoint 2-403** N Hagley Park, across from 76 Park Terrace - Proposed - Site 2

View at 200mm when printed at 100%

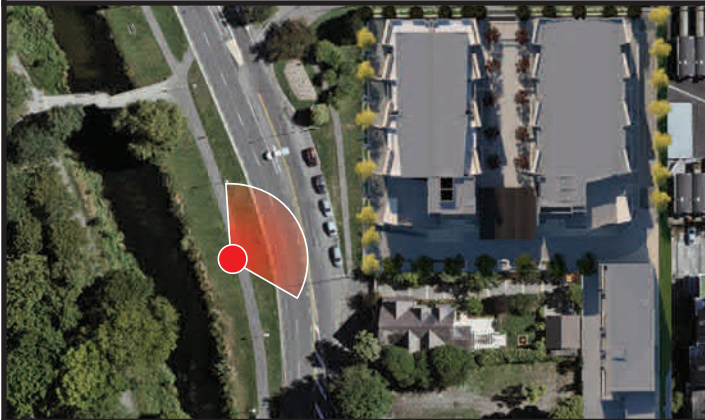


Ryman Healthcare  
Park Terrace Retirement Village  
Visual Simulation

**Viewpoint 2-403**

N Hagley Park, across from 76 Park Tce - Proposed

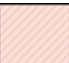
Easting (NZGD2000 Mt Pleasant)	391997.89
Northing (NZGD2000 Mt Pleasant)	807280.37
Elevation (m)	15.27
Height of Camera (m)	1.65
Date & Time of Photography	29/04/2020 at 2:03pm
Camera Used	Canon EOS 6D II 50mm
Orientation of View	NE



Visual Simulation is to be printed and viewed at the following sizes in compliance with NZILA Best Practise Guide 10.2

Primary Horizontal Field of View 124°  
Primary Vertical Field of View 55°

This page is to be printed at 100%.  
At this scale the image is to be viewed at 200mm from the viewer's eyes.

 Buildings shaded with this overlay represent external proposed developments.





**Viewpoint 2-404** 18 Peterborough Street - Existing

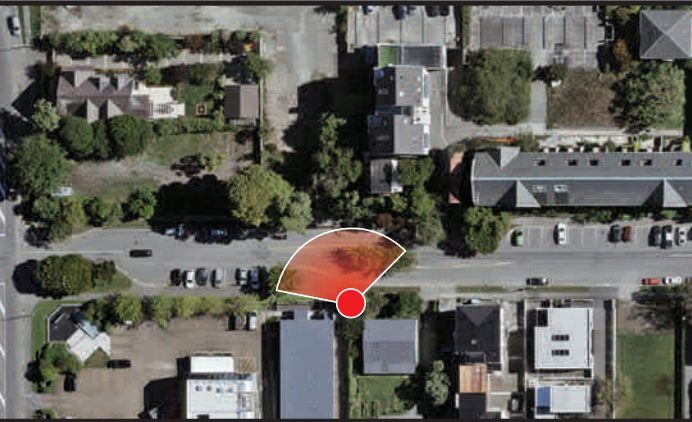
View at 200mm when printed at 100%



Ryman Healthcare  
Park Terrace Retirement Village  
Visual Simulation

**Viewpoint 2-404**  
18 Peterborough Street - Existing

Easting (NZGD2000 Mt Pleasant)	392098.61
Northing (NZGD2000 Mt Pleasant)	807213.93
Elevation (m)	15.90
Height of Camera (m)	1.65
Date & Time of Photography	29/04/2020 at 2:16pm
Camera Used	Canon EOS 6D II 50mm
Orientation of View	NNW



Visual Simulation is to be printed and viewed at the following sizes in compliance with NZILA Best Practise Guide 10.2

Primary Horizontal Field of View 124°  
Primary Vertical Field of View 55°

This page is to be printed at 100%.  
At this scale the image is to be viewed at 200mm from the viewer's eyes.





**Viewpoint 2-404** 18 Peterborough Street - Proposed - Site 2

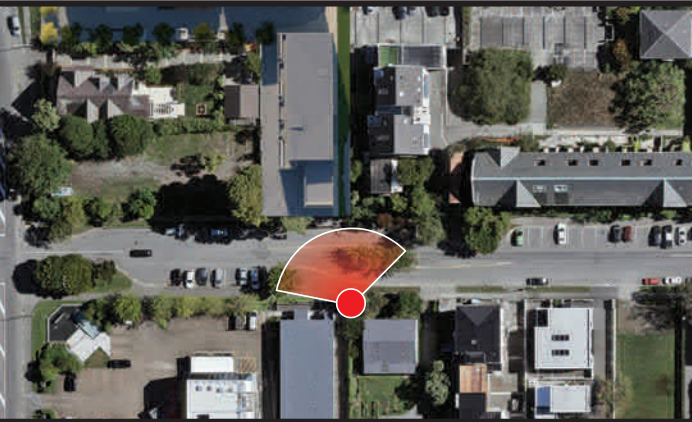
View at 200mm when printed at 100%



Ryman Healthcare  
Park Terrace Retirement Village  
Visual Simulation

**Viewpoint 2-404**  
18 Peterborough Street - Proposed


Easting (NZGD2000 Mt Pleasant)	392098.61
Northing (NZGD2000 Mt Pleasant)	807213.93
Elevation (m)	15.90
Height of Camera (m)	1.65
Date & Time of Photography	29/04/2020 at 2:16pm
Camera Used	Canon EOS 6D II 50mm
Orientation of View	NNW



Visual Simulation is to be printed and viewed at the following sizes in compliance with NZILA Best Practise Guide 10.2

Primary Horizontal Field of View 124°  
Primary Vertical Field of View 55°

This page is to be printed at 100%.  
At this scale the image is to be viewed at 200mm from the viewer's eyes.

 Buildings shaded with this overlay represent external proposed developments.



Site 2 - Peterborough Street

VP#	
Viewpoint 2-501	Corner of Park Terrace and Salisbury Street
Viewpoint 2-502	15 Salisbury Street
Viewpoint 2-503	Salisbury Street, Entrance to Westwood Terrace







**Viewpoint 2-501**    Corner of Park Terrace and Salisbury Street - Existing

View at 200mm when printed at 100%



Ryman Healthcare  
Park Terrace Retirement Village  
Visual Simulation

**Viewpoint 2-501**  
Corner of Park Tce and Salisbury St - Existing

Easting (NZGD2000 Mt Pleasant)	392007.35
Northing (NZGD2000 Mt Pleasant)	807334.02
Elevation (m)	17.66
Height of Camera (m)	1.65
Date & Time of Photography	16/06/2020 at 12:39pm
Camera Used	Canon EOS 6D II 50mm
Orientation of View	E



Visual Simulation is to be printed and viewed at the following sizes in compliance with NZILA Best Practise Guide 10.2

Primary Horizontal Field of View 124°  
Primary Vertical Field of View 55°

This page is to be printed at 100%.  
At this scale the image is to be viewed at 200mm from the viewer's eyes.





**Viewpoint 2-501**    Corner of Park Terrace and Salisbury Street - Proposed

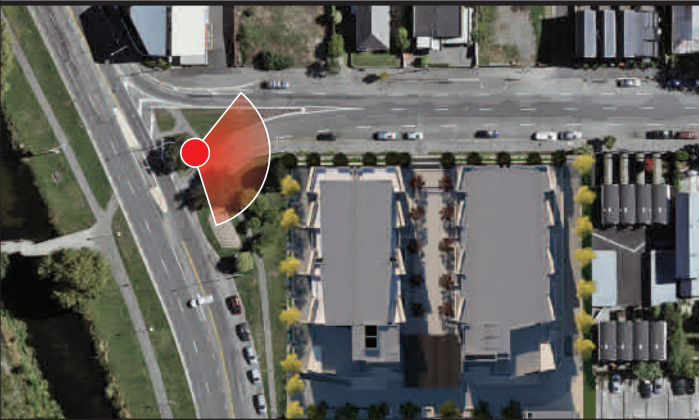
View at 200mm when printed at 100%



Ryman Healthcare  
Park Terrace Retirement Village  
Visual Simulation

**Viewpoint 2-501**  
Corner of Park Tce and Salisbury St - Proposed

Easting (NZGD2000 Mt Pleasant)	392007.35
Northing (NZGD2000 Mt Pleasant)	807334.02
Elevation (m)	17.66
Height of Camera (m)	1.65
Date & Time of Photography	16/06/2020 at 12:39pm
Camera Used	Canon EOS 6D II 50mm
Orientation of View	E



Visual Simulation is to be printed and viewed at the following sizes in compliance with NZILA Best Practise Guide 10.2

Primary Horizontal Field of View 124°  
Primary Vertical Field of View 55°

This page is to be printed at 100%.  
At this scale the image is to be viewed at 200mm from the viewer's eyes.





**Viewpoint 2-502**    15 Salisbury Street - Existing

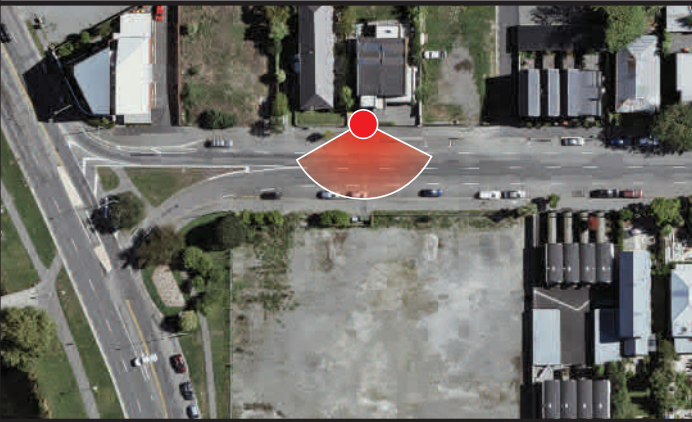
View at 200mm when printed at 100%



Ryman Healthcare  
Park Terrace Retirement Village  
Visual Simulation

**Viewpoint 2-502**  
15 Salisbury Street - Existing

Easting (NZGD2000 Mt Pleasant)	392057.24
Northing (NZGD2000 Mt Pleasant)	807351.87
Elevation (m)	17.52
Height of Camera (m)	1.65
Date & Time of Photography	16/06/2020 at 12:51pm
Camera Used	Canon EOS 6D II 50mm
Orientation of View	S



Visual Simulation is to be printed and viewed at the following sizes in compliance with NZILA Best Practise Guide 10.2

Primary Horizontal Field of View 124°  
Primary Vertical Field of View 55°

This page is to be printed at 100%.  
At this scale the image is to be viewed at 200mm from the viewer's eyes.





**Viewpoint 2-502**    15 Salisbury Street - Proposed

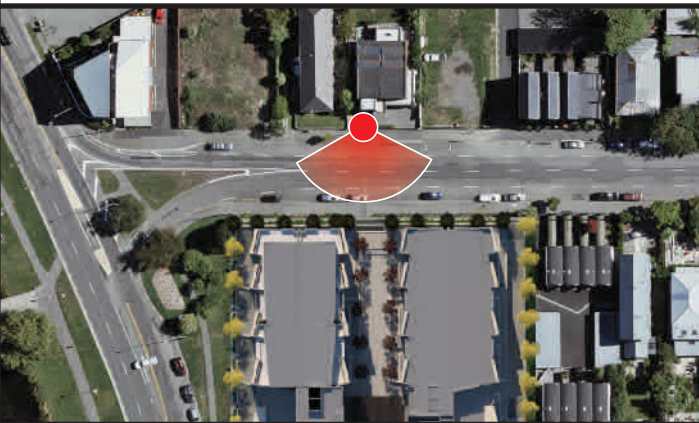
View at 200mm when printed at 100%



Ryman Healthcare  
Park Terrace Retirement Village  
Visual Simulation

**Viewpoint 2-502**  
15 Salisbury Street - Proposed

Easting (NZGD2000 Mt Pleasant)	392057.24
Northing (NZGD2000 Mt Pleasant)	807351.87
Elevation (m)	17.52
Height of Camera (m)	1.65
Date & Time of Photography	16/06/2020 at 12:51pm
Camera Used	Canon EOS 6D II 50mm
Orientation of View	S



Visual Simulation is to be printed and viewed at the following sizes in compliance with NZILA Best Practise Guide 10.2

Primary Horizontal Field of View 124°  
Primary Vertical Field of View 55°

This page is to be printed at 100%.  
At this scale the image is to be viewed at 200mm from the viewer's eyes.





**Viewpoint 2-503** Salisbury Street, Entrance to Westwood Terrace - Existing

View at 200mm when printed at 100%



Ryman Healthcare  
Park Terrace Retirement Village  
Visual Simulation

**Viewpoint 2-503**

Salisbury St, Entrance to Westwood Tce - Existing

Easting (NZGD2000 Mt Pleasant)	392093.09
Northing (NZGD2000 Mt Pleasant)	807353.37
Elevation (m)	17.49
Height of Camera (m)	1.65
Date & Time of Photography	16/06/2020 at 1:01pm
Camera Used	Canon EOS 6D II 50mm
Orientation of View	SW



Visual Simulation is to be printed and viewed at the following sizes in compliance with NZILA Best Practise Guide 10.2

Primary Horizontal Field of View 124°  
Primary Vertical Field of View 55°

This page is to be printed at 100%.  
At this scale the image is to be viewed at 200mm from the viewer's eyes.





**Viewpoint 2-503**    Salisbury Street, Entrance to Westwood Terrace - Proposed

View at 200mm when printed at 100%



Ryman Healthcare  
Park Terrace Retirement Village  
Visual Simulation

**Viewpoint 2-503**  
Salisbury St, Entrance to Westwood Tce - Proposed

Easting (NZGD2000 Mt Pleasant)	392093.09
Northing (NZGD2000 Mt Pleasant)	807353.37
Elevation (m)	17.49
Height of Camera (m)	1.65
Date & Time of Photography	16/06/2020 at 1:01pm
Camera Used	Canon EOS 6D II 50mm
Orientation of View	SW



Visual Simulation is to be printed and viewed at the following sizes in compliance with NZILA Best Practise Guide 10.2

Primary Horizontal Field of View 124°  
Primary Vertical Field of View 55°

This page is to be printed at 100%.  
At this scale the image is to be viewed at 200mm from the viewer's eyes.