

Site 1 - Bishops Park

VP#	
Viewpoint 1-1	N Hagley Park East side of bridge
Viewpoint 1-2	N Hagley Park across from 100 Park Terrace
Viewpoint 1-3	N Hagley Park across from 112 Park Terrace
Viewpoint 1-4	15 Dublin Street
Viewpoint 1-5	19 Dorset Street
Viewpoint 1-6	104 Victoria Street





Viewpoint 1-1 N Hagley Park East side of bridge - Existing

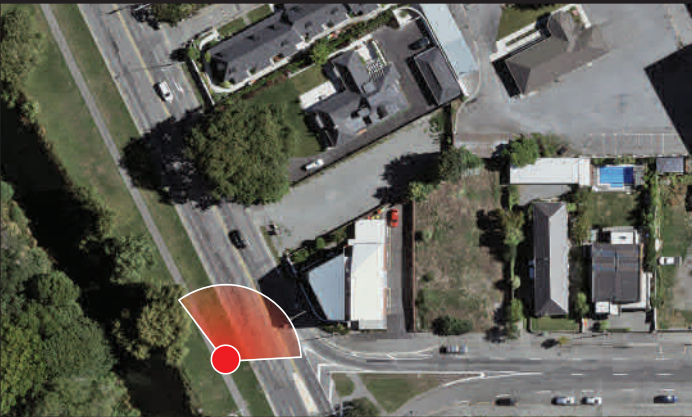
View at 200mm when printed at 100%



Ryman Healthcare
Park Terrace Retirement Village
Visual Simulation

Viewpoint 1-1
N Hagley Park East side of bridge - Existing

Easting (NZGD2000 Mt Pleasant)	391972.35
Northing (NZGD2000 Mt Pleasant)	807340.94
Elevation (m)	15.38
Height of Camera (m)	1.65
Date & Time of Photography	11/02/2020 at 4:58pm
Camera Used	Canon EOS 6D II 50mm
Orientation of View	NNE



Visual Simulation is to be printed and viewed at the following sizes in compliance with NZILA Best Practise Guide 10.2

Primary Horizontal Field of View 124°
Primary Vertical Field of View 55°

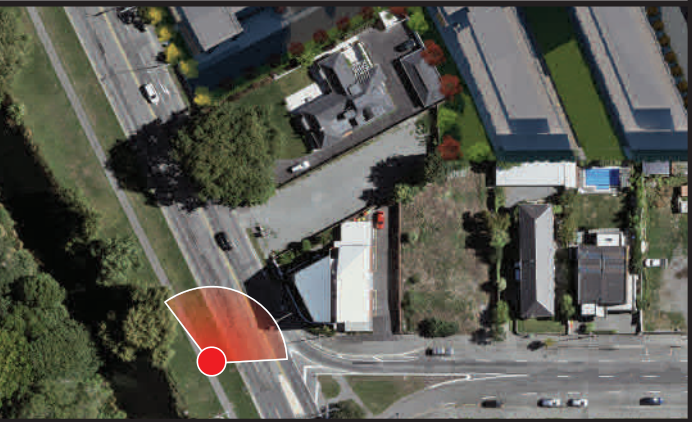
This page is to be printed at 100%.
At this scale the image is to be viewed at 200mm from the viewer's eyes.



Ryman Healthcare
Park Terrace Retirement Village
Visual Simulation

Viewpoint 1-1
N Hagley Park East side of bridge - Proposed

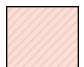
Easting (NZGD2000 Mt Pleasant)	391972.35
Northing (NZGD2000 Mt Pleasant)	807340.94
Elevation (m)	15.38
Height of Camera (m)	1.65
Date & Time of Photography	11/02/2020 at 4:58pm
Camera Used	Canon EOS 6D II 50mm
Orientation of View	NNE



Visual Simulation is to be printed and viewed at the following sizes in compliance with NZILA Best Practise Guide 10.2

Primary Horizontal Field of View 124°
Primary Vertical Field of View 55°

This page is to be printed at 100%.
At this scale the image is to be viewed at 200mm from the viewer's eyes.

 Buildings shaded with this overlay represent external proposed developments.

Viewpoint 1-1 N Hagley Park East side of bridge - Proposed - Site 1

View at 200mm when printed at 100%



Viewpoint 1-2 N Hagley Park across from 100 Park Terrace - Existing

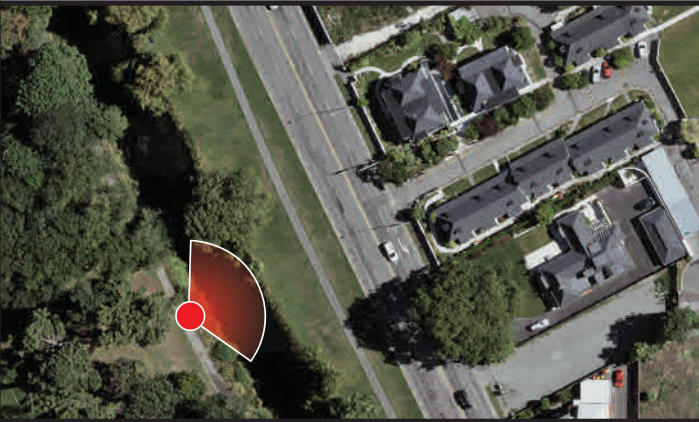
View at 200mm when printed at 100%



Ryman Healthcare
Park Terrace Retirement Village
Visual Simulation

Viewpoint 1-2
N Hagley Park across from 100 Park T - Existing

Easting (NZGD2000 Mt Pleasant)	391914.912
Northing (NZGD2000 Mt Pleasant)	807382.202
Elevation (m)	17.304
Height of Camera (m)	1.66
Date & Time of Photography	11/02/2020 at 5:55pm
Camera Used	Canon EOS 6D II 50mm
Orientation of View	ENE



Visual Simulation is to be printed and viewed at the following sizes in compliance with NZILA Best Practise Guide 10.2

Primary Horizontal Field of View 124°
Primary Vertical Field of View 55°

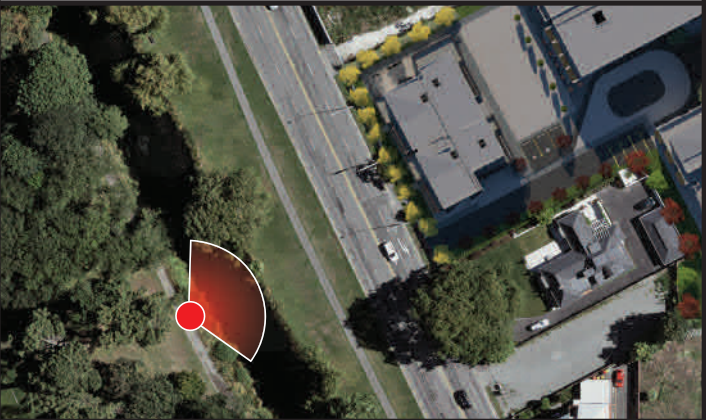
This page is to be printed at 100%.
At this scale the image is to be viewed at 200mm from the viewer's eyes.



Ryman Healthcare
Park Terrace Retirement Village
Visual Simulation

Viewpoint 1-2
N Hagley Park across from 100 Park T - Proposed

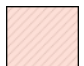
Easting (NZGD2000 Mt Pleasant)	391914.912
Northing (NZGD2000 Mt Pleasant)	807382.202
Elevation (m)	17.304
Height of Camera (m)	1.66
Date & Time of Photography	11/02/2020 at 5:55pm
Camera Used	Canon EOS 6D II 50mm
Orientation of View	ENE



Visual Simulation is to be printed and viewed at the following sizes in compliance with NZILA Best Practise Guide 10.2

Primary Horizontal Field of View 124°
Primary Vertical Field of View 55°

This page is to be printed at 100%.
At this scale the image is to be viewed at 200mm from the viewer's eyes.

 Buildings shaded with this overlay represent external proposed developments.

Viewpoint 1-2 N Hagley Park across from 100 Park Terrace - Proposed - Site 1

View at 200mm when printed at 100%



Viewpoint 1-3 N Hagley Park across from 112 Park Terrace - Existing

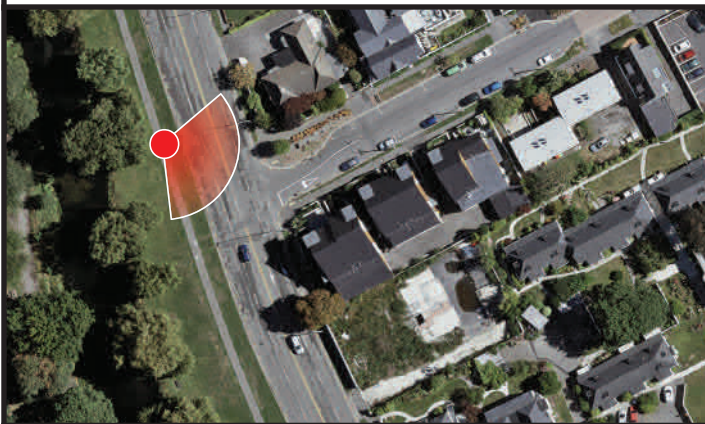
View at 200mm when printed at 100%



Ryman Healthcare
Park Terrace Retirement Village
Visual Simulation

Viewpoint 1-3
N Hagley Park across from 112 Park T - Existing

Easting (NZGD2000 Mt Pleasant)	391899.828
Northing (NZGD2000 Mt Pleasant)	807512.954
Elevation (m)	17.206
Height of Camera (m)	1.665
Date & Time of Photography	11/02/2020 at 6:16pm
Camera Used	Canon EOS 6D II 50mm
Orientation of View	ESE



Visual Simulation is to be printed and viewed at the following sizes in compliance with NZILA Best Practice Guide 10.2

Primary Horizontal Field of View 124°
Primary Vertical Field of View 55°

This page is to be printed at 100%.
At this scale the image is to be viewed at 200mm from the viewer's eyes.



Viewpoint 1-3 N Hagley Park across from 112 Park Terrace - Proposed - Site 1

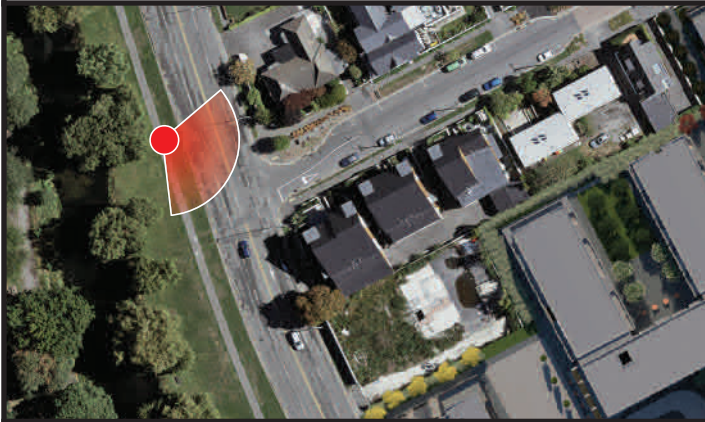
View at 200mm when printed at 100%



Ryman Healthcare
Park Terrace Retirement Village
Visual Simulation

Viewpoint 1-3
N Hagley Park across from 112 Park T - Proposed

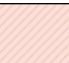
Easting (NZGD2000 Mt Pleasant)	391899.828
Northing (NZGD2000 Mt Pleasant)	807512.954
Elevation (m)	17.206
Height of Camera (m)	1.665
Date & Time of Photography	11/02/2020 at 6:16pm
Camera Used	Canon EOS 6D II 50mm
Orientation of View	ESE



Visual Simulation is to be printed and viewed at the following sizes in compliance with NZILA Best Practise Guide 10.2

Primary Horizontal Field of View 124°
Primary Vertical Field of View 55°

This page is to be printed at 100%.
At this scale the image is to be viewed at 200mm from the viewer's eyes.

 Buildings shaded with this overlay represent external proposed developments.



Viewpoint 1-4 15 Dublin Street - Existing

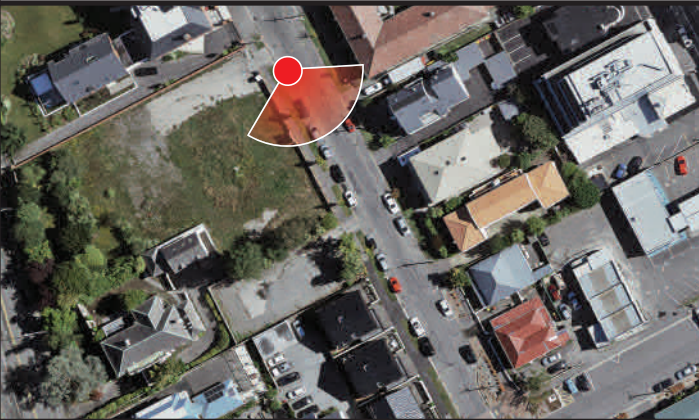
View at 200mm when printed at 100%



Ryman Healthcare
Park Terrace Retirement Village
Visual Simulation

Viewpoint 1-4
15 Dublin Street - Existing

Easting (NZGD2000 Mt Pleasant)	391952.005
Northing (NZGD2000 Mt Pleasant)	807636.537
Elevation (m)	18.07
Height of Camera (m)	1.66
Date & Time of Photography	11/02/2020 at 6:36pm
Camera Used	Canon EOS 6D II 50mm
Orientation of View	SSE



Visual Simulation is to be printed and viewed at the following sizes in compliance with NZILA Best Practise Guide 10.2

Primary Horizontal Field of View 124°
Primary Vertical Field of View 55°

This page is to be printed at 100%.
At this scale the image is to be viewed at 200mm from the viewer's eyes.



Viewpoint 1-4 15 Dublin Street - Proposed - Site 1

View at 200mm when printed at 100%



Ryman Healthcare
Park Terrace Retirement Village
Visual Simulation

Viewpoint 1-4
15 Dublin Street - Proposed


Easting (NZGD2000 Mt Pleasant)	391952.005
Northing (NZGD2000 Mt Pleasant)	807636.537
Elevation (m)	18.07
Height of Camera (m)	1.66
Date & Time of Photography	11/02/2020 at 6:36pm
Camera Used	Canon EOS 6D II 50mm
Orientation of View	SSE



Visual Simulation is to be printed and viewed at the following sizes in compliance with NZILA Best Practise Guide 10.2

Primary Horizontal Field of View 124°
Primary Vertical Field of View 55°

This page is to be printed at 100%.
At this scale the image is to be viewed at 200mm from the viewer's eyes.

 Buildings shaded with this overlay represent external proposed developments.



Viewpoint 1-5 19 Dorset Street - Existing

View at 200mm when printed at 100%



Ryman Healthcare
Park Terrace Retirement Village
Visual Simulation

Viewpoint 1-5
19 Dorset Street - Existing

Easting (NZGD2000 Mt Pleasant)	392052.429
Northing (NZGD2000 Mt Pleasant)	807581.521
Elevation (m)	18.278
Height of Camera (m)	1.67
Date & Time of Photography	11/02/2020 at 3:09pm
Camera Used	Canon EOS 6D II 50mm
Orientation of View	SSW



Visual Simulation is to be printed and viewed at the following sizes in compliance with NZILA Best Practise Guide 10.2

Primary Horizontal Field of View 124°
Primary Vertical Field of View 55°

This page is to be printed at 100%.
At this scale the image is to be viewed at 200mm from the viewer's eyes.



Viewpoint 1-5 19 Dorset Street - Proposed - Site 1

View at 200mm when printed at 100%



Ryman Healthcare
Park Terrace Retirement Village
Visual Simulation

Viewpoint 1-5
19 Dorset Street - Proposed

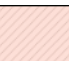
Easting (NZGD2000 Mt Pleasant)	392052.429
Northing (NZGD2000 Mt Pleasant)	807581.521
Elevation (m)	18.278
Height of Camera (m)	1.67
Date & Time of Photography	11/02/2020 at 3:09pm
Camera Used	Canon EOS 6D II 50mm
Orientation of View	SSW



Visual Simulation is to be printed and viewed at the following sizes in compliance with NZILA Best Practise Guide 10.2

Primary Horizontal Field of View 124°
Primary Vertical Field of View 55°

This page is to be printed at 100%.
At this scale the image is to be viewed at 200mm from the viewer's eyes.

 Buildings shaded with this overlay represent external proposed developments.



Viewpoint 1-6 104 Victoria Street - Existing

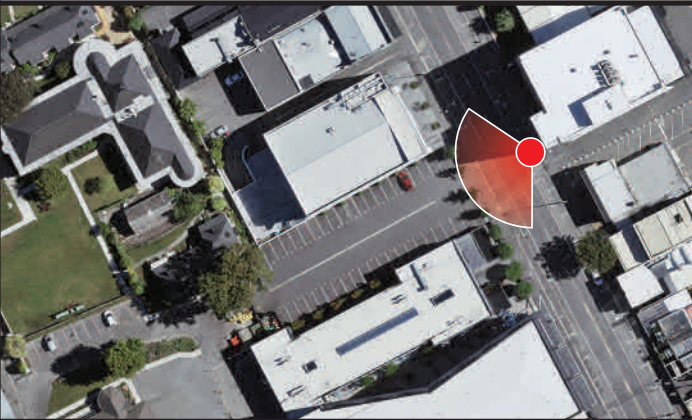
View at 200mm when printed at 100%



Ryman Healthcare
Park Terrace Retirement Village
Visual Simulation

Viewpoint 1-6
104 Victoria Street - Existing

Easting (NZGD2000 Mt Pleasant)	392147.831
Northing (NZGD2000 Mt Pleasant)	807482.653
Elevation (m)	18.233
Height of Camera (m)	1.67
Date & Time of Photography	11/02/2020 at 3:25pm
Camera Used	Canon EOS 6D II 50mm
Orientation of View	WSW



Visual Simulation is to be printed and viewed at the following sizes in compliance with NZILA Best Practise Guide 10.2

Primary Horizontal Field of View 124°
Primary Vertical Field of View 55°

This page is to be printed at 100%.
At this scale the image is to be viewed at 200mm from the viewer's eyes.



Viewpoint 1-6 104 Victoria Street - Proposed - Site 1

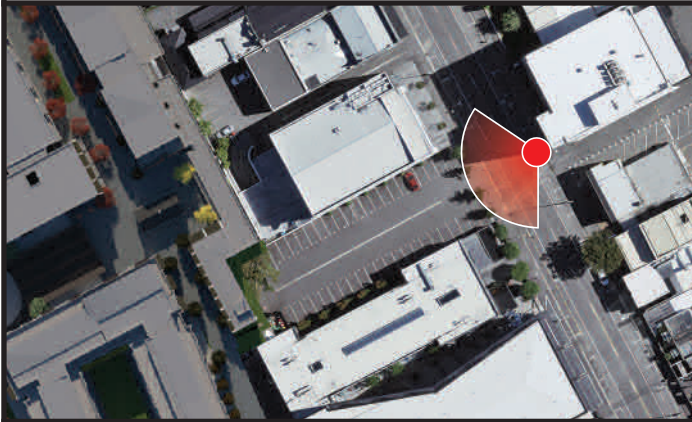
View at 200mm when printed at 100%



Ryman Healthcare
Park Terrace Retirement Village
Visual Simulation

Viewpoint 1-6
104 Victoria Street - Proposed

Easting (NZGD2000 Mt Pleasant)	392147.831
Northing (NZGD2000 Mt Pleasant)	807482.653
Elevation (m)	18.233
Height of Camera (m)	1.67
Date & Time of Photography	11/02/2020 at 3:25pm
Camera Used	Canon EOS 6D II 50mm
Orientation of View	WSW



Visual Simulation is to be printed and viewed at the following sizes in compliance with NZILA Best Practise Guide 10.2

Primary Horizontal Field of View 124°
Primary Vertical Field of View 55°

This page is to be printed at 100%.
At this scale the image is to be viewed at 200mm from the viewer's eyes.

Site 1 - Bishops Park

VP#	
Viewpoint 1-401	Corner of Dublin St and Dorset St
Viewpoint 1-402	N Hagley Park, across from 108 Park Terrace
Viewpoint 1-403	N Hagley Park, across from 76 Park Terrace





Viewpoint 1-401 Corner of Dublin St and Dorset St - Existing

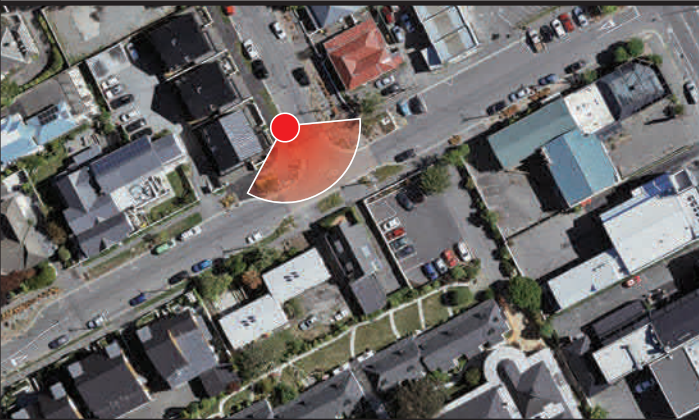
View at 200mm when printed at 100%



Ryman Healthcare
Park Terrace Retirement Village
Visual Simulation

Viewpoint 1-401
Corner of Dublin St and Dorset St - Existing

Easting (NZGD2000 Mt Pleasant)	391988.96
Northing (NZGD2000 Mt Pleasant)	807562.67
Elevation (m)	16.22
Height of Camera (m)	1.65
Date & Time of Photography	29/04/2020 at 1:39pm
Camera Used	Canon EOS 6D II 50mm
Orientation of View	SE



Visual Simulation is to be printed and viewed at the following sizes in compliance with NZILA Best Practise Guide 10.2

Primary Horizontal Field of View 124°
Primary Vertical Field of View 55°

This page is to be printed at 100%.
At this scale the image is to be viewed at 200mm from the viewer's eyes.



Viewpoint 1-401 Corner of Dublin St and Dorset St - Proposed - Site 1

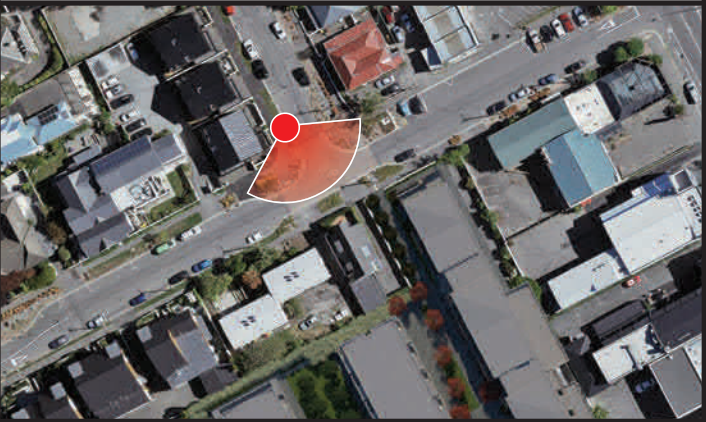
View at 200mm when printed at 100%



Ryman Healthcare
Park Terrace Retirement Village
Visual Simulation

Viewpoint 1-401
Corner of Dublin St and Dorset St - Proposed


Easting (NZGD2000 Mt Pleasant)	391988.96
Northing (NZGD2000 Mt Pleasant)	807562.67
Elevation (m)	16.22
Height of Camera (m)	1.65
Date & Time of Photography	29/04/2020 at 1:39pm
Camera Used	Canon EOS 6D II 50mm
Orientation of View	SE



Visual Simulation is to be printed and viewed at the following sizes in compliance with NZILA Best Practise Guide 10.2

Primary Horizontal Field of View 124°
Primary Vertical Field of View 55°

This page is to be printed at 100%.
At this scale the image is to be viewed at 200mm from the viewer's eyes.

 Buildings shaded with this overlay represent external proposed developments.



Viewpoint 1-401 Corner of Dublin St and Dorset St - Proposed - Van Removed- Site 1

View at 200mm when printed at 100%



Ryman Healthcare
Park Terrace Retirement Village
Visual Simulation

Viewpoint 1-401
Corner of Dublin St and Dorset St - Proposed


Easting (NZGD2000 Mt Pleasant)	391988.96
Northing (NZGD2000 Mt Pleasant)	807562.67
Elevation (m)	16.22
Height of Camera (m)	1.65
Date & Time of Photography	29/04/2020 at 1:39pm
Camera Used	Canon EOS 6D II 50mm
Orientation of View	SE



Visual Simulation is to be printed and viewed at the following sizes in compliance with NZILA Best Practise Guide 10.2

Primary Horizontal Field of View 124°
Primary Vertical Field of View 55°

This page is to be printed at 100%.
At this scale the image is to be viewed at 200mm from the viewer's eyes.

 Buildings shaded with this overlay represent external proposed developments.



Viewpoint 1-402 N Hagley Park, across from 108 Park Terrace - Existing

View at 200mm when printed at 100%

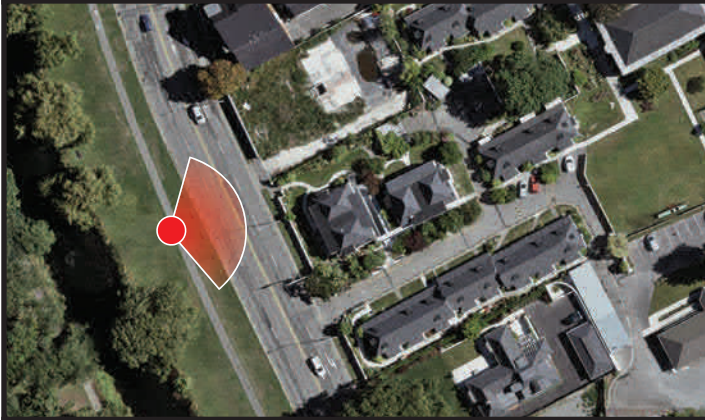


Ryman Healthcare
Park Terrace Retirement Village
Visual Simulation

Viewpoint 1-402

N Hagley Park, across from 108 Park Tce - Existing

Easting (NZGD2000 Mt Pleasant)	391924.42
Northing (NZGD2000 Mt Pleasant)	807444.04
Elevation (m)	15.63
Height of Camera (m)	1.65
Date & Time of Photography	29/04/2020 at 1:52pm
Camera Used	Canon EOS 6D II 50mm
Orientation of View	ENE



Visual Simulation is to be printed and viewed at the following sizes in compliance with NZILA Best Practise Guide 10.2

Primary Horizontal Field of View 124°
Primary Vertical Field of View 55°

This page is to be printed at 100%.
At this scale the image is to be viewed at 200mm from the viewer's eyes.



Viewpoint 1-402 N Hagley Park, across from 108 Park Terrace - Proposed - Site 1

View at 200mm when printed at 100%

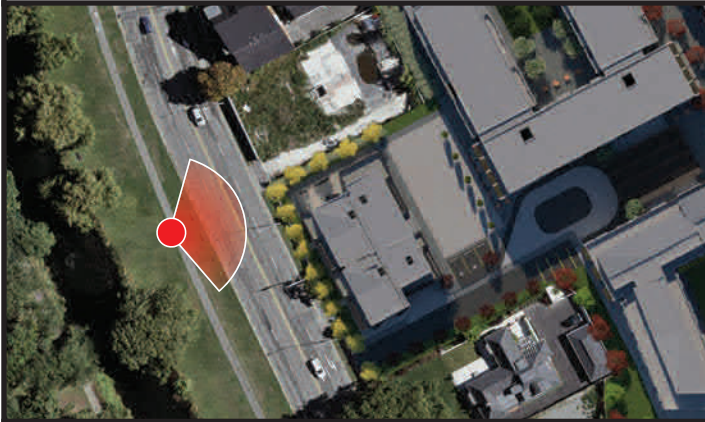


Ryman Healthcare
Park Terrace Retirement Village
Visual Simulation

Viewpoint 1-402

N Hagley Park, across from 108 Park Tce - Proposed


Easting (NZGD2000 Mt Pleasant)	391924.42
Northing (NZGD2000 Mt Pleasant)	807444.04
Elevation (m)	15.63
Height of Camera (m)	1.65
Date & Time of Photography	29/04/2020 at 1:52pm
Camera Used	Canon EOS 6D II 50mm
Orientation of View	ENE



Visual Simulation is to be printed and viewed at the following sizes in compliance with NZILA Best Practise Guide 10.2

Primary Horizontal Field of View 124°
Primary Vertical Field of View 55°

This page is to be printed at 100%.
At this scale the image is to be viewed at 200mm from the viewer's eyes.

 Buildings shaded with this overlay represent external proposed developments.



Viewpoint 1-403 N Hagley Park, across from 76 Park Terrace - Existing

View at 200mm when printed at 100%

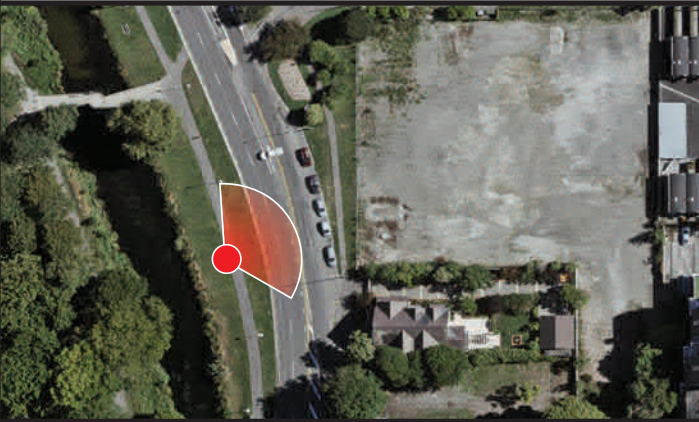


Ryman Healthcare
Park Terrace Retirement Village
Visual Simulation

Viewpoint 1-403

N Hagley Park, across from 76 Park Tce - Existing

Easting (NZGD2000 Mt Pleasant)	391997.89
Northing (NZGD2000 Mt Pleasant)	807280.36
Elevation (m)	15.27
Height of Camera (m)	1.65
Date & Time of Photography	29/04/2020 at 2:03pm
Camera Used	Canon EOS 6D II 50mm
Orientation of View	NE



Visual Simulation is to be printed and viewed at the following sizes in compliance with NZILA Best Practise Guide 10.2

Primary Horizontal Field of View 124°
Primary Vertical Field of View 55°

This page is to be printed at 100%.
At this scale the image is to be viewed at 200mm from the viewer's eyes.



Viewpoint 1-403 N Hagley Park, across from 76 Park Terrace - Proposed - Site 1

View at 200mm when printed at 100%

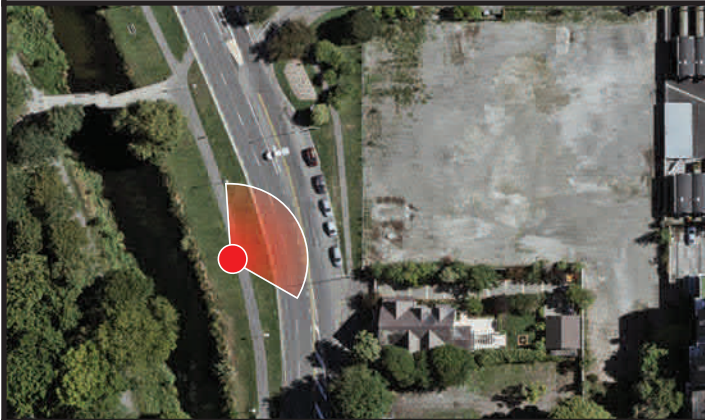


Ryman Healthcare
Park Terrace Retirement Village
Visual Simulation

Viewpoint 1-403

N Hagley Park, across from 76 Park Tce - Proposed

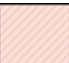
Easting (NZGD2000 Mt Pleasant)	391997.89
Northing (NZGD2000 Mt Pleasant)	807280.36
Elevation (m)	15.27
Height of Camera (m)	1.65
Date & Time of Photography	29/04/2020 at 2:03pm
Camera Used	Canon EOS 6D II 50mm
Orientation of View	NE



Visual Simulation is to be printed and viewed at the following sizes in compliance with NZILA Best Practise Guide 10.2

Primary Horizontal Field of View 124°
Primary Vertical Field of View 55°

This page is to be printed at 100%.
At this scale the image is to be viewed at 200mm from the viewer's eyes.

 Buildings shaded with this overlay represent external proposed developments.