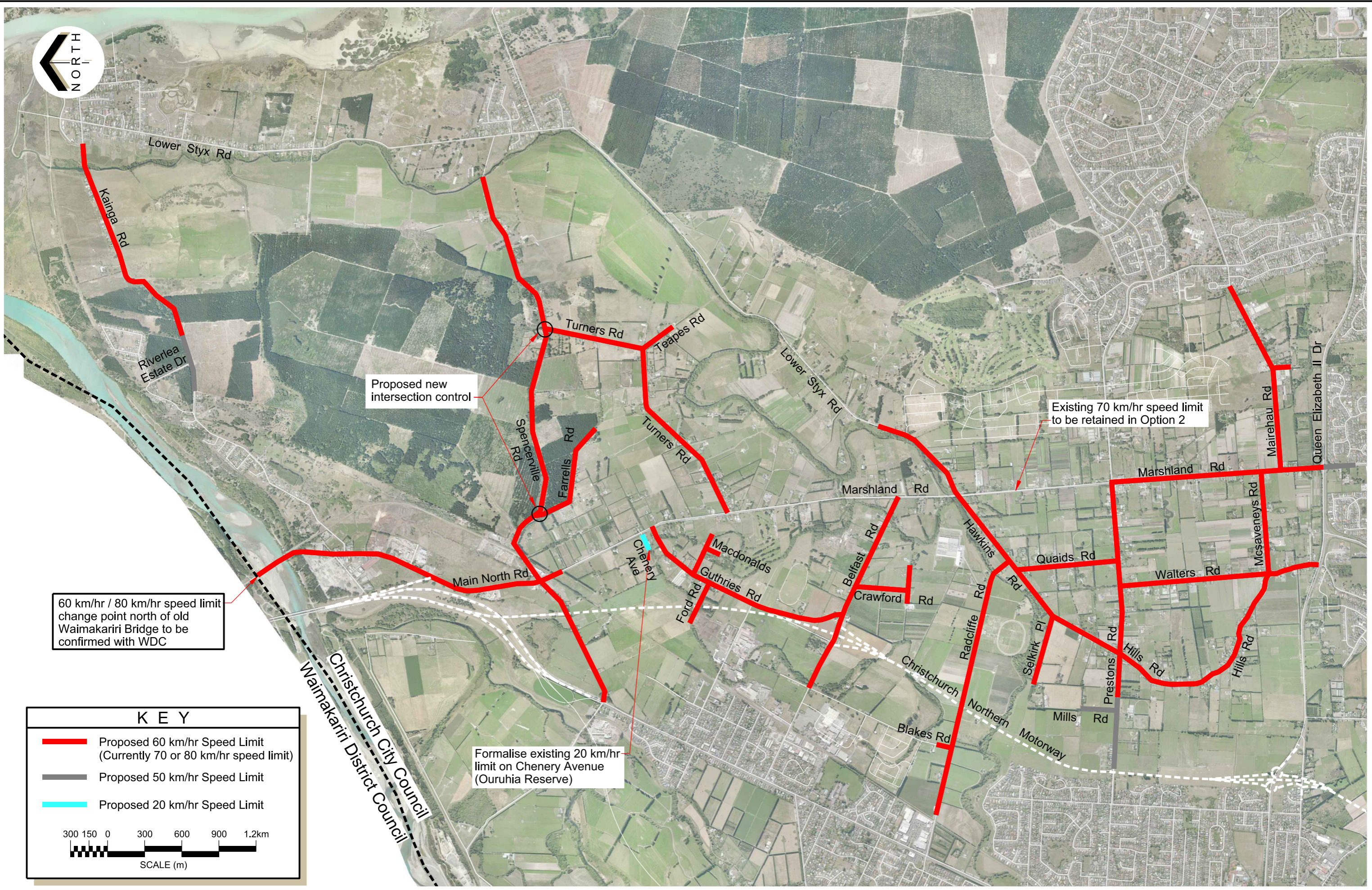




Original size mm
100
50
30
10
0
© Copyright Christchurch City Council / Aerial Photography Creative Commons Attribution 3.0 New Zealand License



60 km/hr / 80 km/hr speed limit change point north of old Waimakariri Bridge to be confirmed with WDC

Proposed new intersection control

Existing 70 km/hr speed limit to be retained in Option 2

Formalise existing 20 km/hr limit on Chenery Avenue (Ouruhia Reserve)

KEY

- Proposed 60 km/hr Speed Limit (Currently 70 or 80 km/hr speed limit)
- Proposed 50 km/hr Speed Limit
- Proposed 20 km/hr Speed Limit



Marshland, Spencerville and Kainga Area Speed Management Plan
Project Overview Map - Option 2
For Approval

Original Plan Size: A3
ISSUE.1 26/07/2019
TG133419 MJR