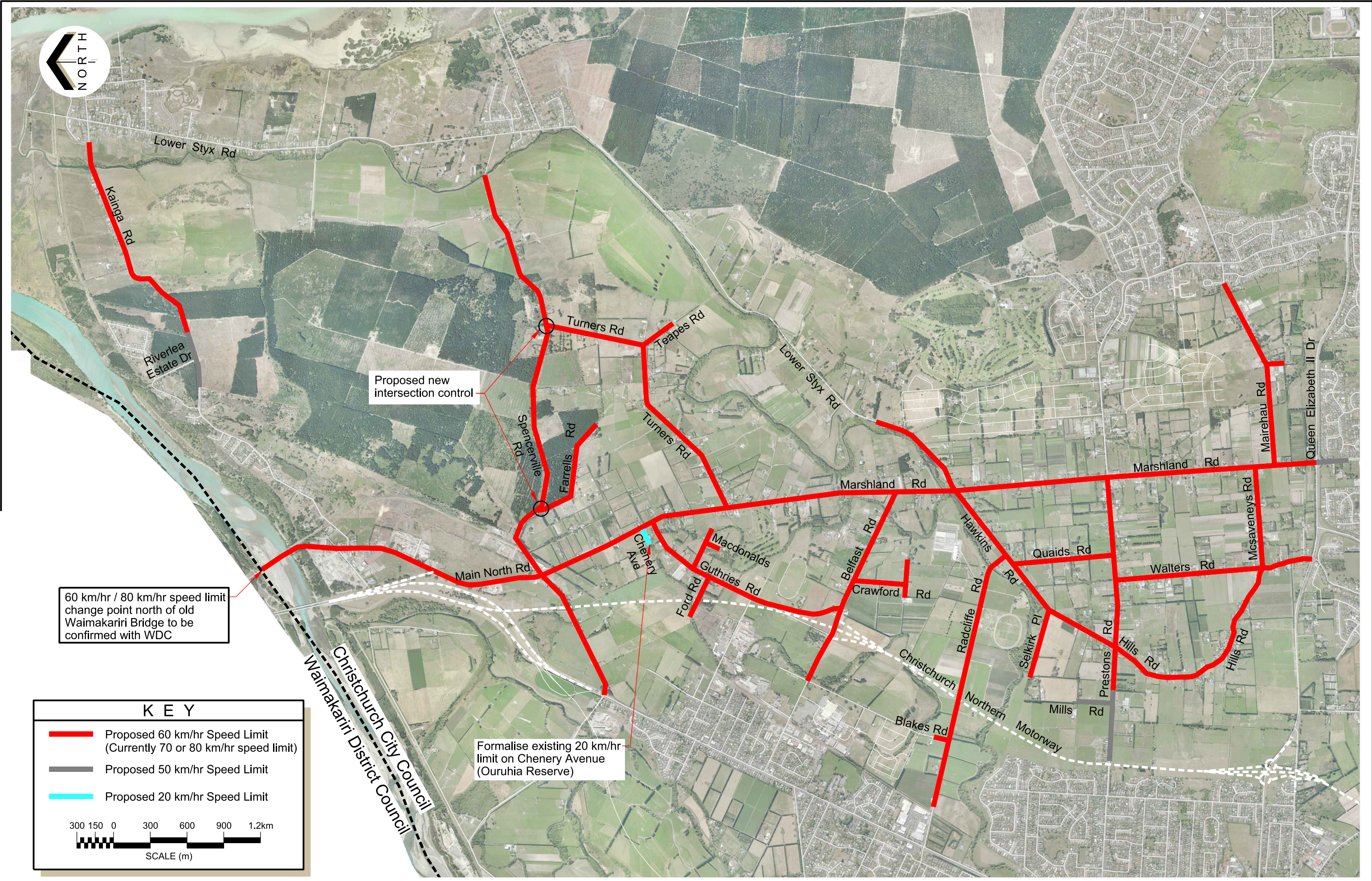




100
50
30
10
0



60 km/hr / 80 km/hr speed limit change point north of old Waimakariri Bridge to be confirmed with WDC

Proposed new intersection control

Formalise existing 20 km/hr limit on Chenery Avenue (Ouruhia Reserve)

KEY

- Proposed 60 km/hr Speed Limit (Currently 70 or 80 km/hr speed limit)
- Proposed 50 km/hr Speed Limit
- Proposed 20 km/hr Speed Limit

