

Land Drainage Recovery Programme

Reducing the risk of flooding throughout Christchurch City

Dudley Creek Flood Remediation Project

13 July 2017

Guild Street Compound

GUILD STREET COMPOUND

Downer has set up a site compound on the empty Anglican Care section, between Stapletons Road and Guild Street. See map below for location.

We are using the empty Anglican Care site as a compound to stockpile materials. These materials are being used at the worksites on Stapletons Road, and for the widening of St Albans Stream from Hills Road to Stapletons Road.

By using the empty section for storing and transporting materials, we can keep the road and waterway work sites as small as possible. Without the compound, materials would have to be stored on the road next to the work sites.

The site borders St Albans Stream. The new Stapletons Road culvert will be accessed from this compound. In the coming months, some of the trees and vegetation will be cleared from the river bank for the St Albans creek widening work.




We are talking to residents on the other side of the stream about this work.

Please see over the page for information on environmental monitoring.

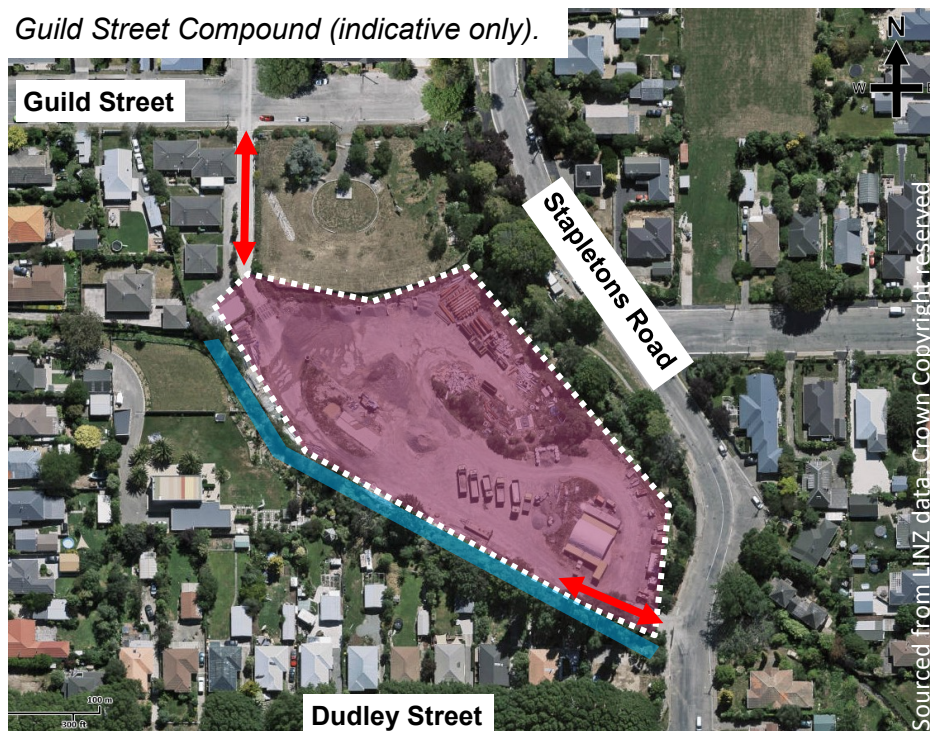
Access

There will be two access points to the compound, Guild Street and Stapletons Road.

Access to the compound will be for site staff only.

KEY	
	Guild Street Compound
	St Albans Stream
	Access to the compound

Guild Street Compound (indicative only).



Downer
Relationships creating success

[We will update you regularly about this work.](#) If you have any questions contact Downer on 0800 033 747 or email dudleyinfo@downer.co.nz



Environmental Monitoring

Water quality: Downer monitor the stream very regularly for sediment run off. Testing is carried out upstream and downstream from our work sites. ECAN also monitor and test the stream for any signs of construction impact. This is carried out routinely during construction.

Dust mitigation: Downer will spray a dust suppression polymer on the worksite as required. Downer will suppress dust arising from heavy truck movements by using sprinklers, water tankers and semi-permanent suppression sprays.

Noise: The compound will be open Monday - Friday, 7am - 6pm. There will be an increase in machinery and truck movement during these hours.

Further information

- Our normal work hours on this project are between 7am and 6pm Monday to Saturday.
- The compound will be fenced off to ensure the public are safe from any machinery and materials.
- There will be increased vehicle movements as trucks and vehicles use the compound for the duration of the project.
- There may be increased noise and dust associated with this work.
- Safety is our number one priority. Safety is your responsibility too. Stay clear and alert - keep children and pets at a safe distance.

These images show environmental management in action on the Dudley Creek project.



Silt containment on Warden Street



In-stream silt containment



Relocating fish and eels

The Dudley Creek Flood Remediation project is on track to be completed by early 2018 and is part of the Council's Land Drainage Recovery Programme (LDRP), which is one of the ways the Council is addressing the issue of flooding. Set up in 2012, LDRP is looking at ways to reduce the risk of flooding in the city's most affected areas and to restore flood risk to pre-earthquake levels.