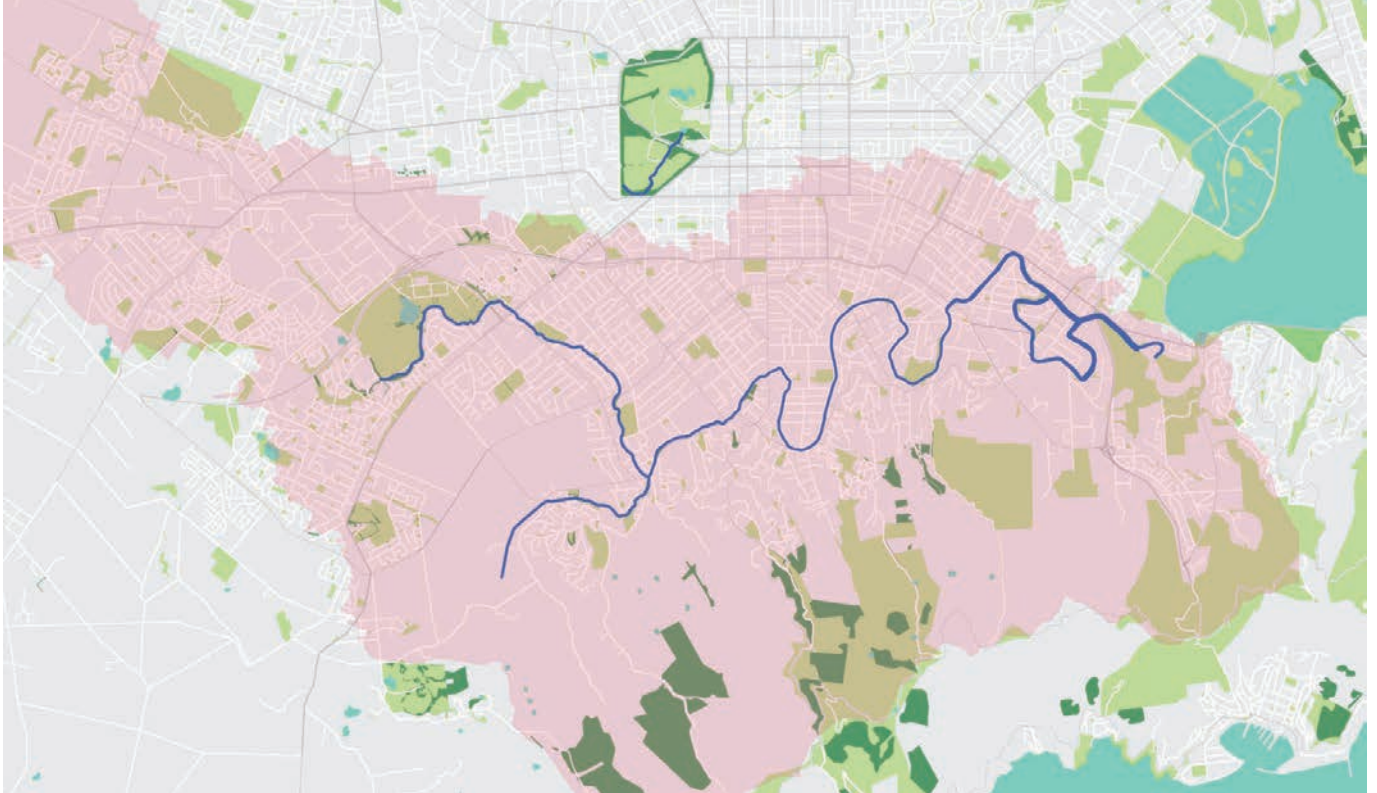


## Waterway Health Report Card 2019

# Ōpāwaho-Heathcote River catchment

Christchurch city has more than 200 kilometres of waterways within five main river catchments – Ōtākaro-Avon, Ōtūkaikino, Pūharakekenui-Styx, Ōpāwaho-Heathcote and Huritini-Halswell. We assess the health of each catchment, testing water and sediment quality and monitoring habitat, plants, insects, fish and periphyton such as algae.


**Source**

Wigram/Port Hills

**Report score**

D

**Elevation**

0-10 metres above  
sea level

**Land use**

Urban (residential,  
commercial and industrial)  
and rural

**Mouth**

Ihutai-  
Avon-Heathcote Estuary

**Length**

27 kilometres



## Assessing waterway health

We measure the health of each waterway using a Water Quality Index (WQI), a Sediment Quality Index (SQI) and the Quantitative Macroinvertebrate Community Index (QMCI).

See more at [ccc.govt.nz/environment/water/waterways/waterway-monitoring](http://ccc.govt.nz/environment/water/waterways/waterway-monitoring)

### Water Quality Index (WQI) Score

We use a WQI specific to Christchurch waterways. Each monitoring site is scored against guideline levels for copper, zinc, pH, suspended solids, dissolved oxygen, temperature, ammonia, nitrogen, phosphorous, biochemical oxygen demand and *Escherichia coli*. The median across the catchment is graded:

- A = 90 – 100 (very good)
- B = 80 – 89.9 (good)
- C = 70 – 79.9 (fair)
- D = 40 – 69.99 (poor)
- E = 0 – 39.9 (very poor)

Ōpāwaho-Heathcote catchment WQI score: **D**

### Sediment Quality Index (SQI) Score

We use a SQI specific to instream sediment of Christchurch waterways. This index is scored against guideline levels for copper, lead, zinc and polycyclic aromatic hydrocarbons. The median across the catchment is graded:

- A = 90 – 100 (very good)
- B = 80 – 89.9 (good)
- C = 70 – 79.9 (fair)
- D = 40 – 69.99 (poor)
- E = 0 – 39.9 (very poor)

Ōpāwaho-Heathcote catchment SQI score: **D**

The Ōpāwaho-Heathcote catchment overall score is **D**



Credit: Instream Consulting Limited




### Quantitative Macroinvertebrate Community Index (QMCI) Score

The QMCI assesses the macroinvertebrate species (organisms with no spine) present and their tolerance to pollution, to determine a waterway's likely water quality. The index values are converted to scores for grading the catchment:

- A = 6.00+ (excellent; clean water)
- B = 5.00 – 5.99 (good; likely mild pollution)
- C = 4.00 – 4.99 (fair; likely moderate pollution)
- D = 0 – 3.99 (poor; likely severe pollution)

Ōpāwaho-Heathcote catchment QMCI score: **D**

### Contact us

-  Dr Belinda Margetts, Principal Waterways Ecologist
-  03 941 5943
-  [belinda.margetts@ccc.govt.nz](mailto:belinda.margetts@ccc.govt.nz)